

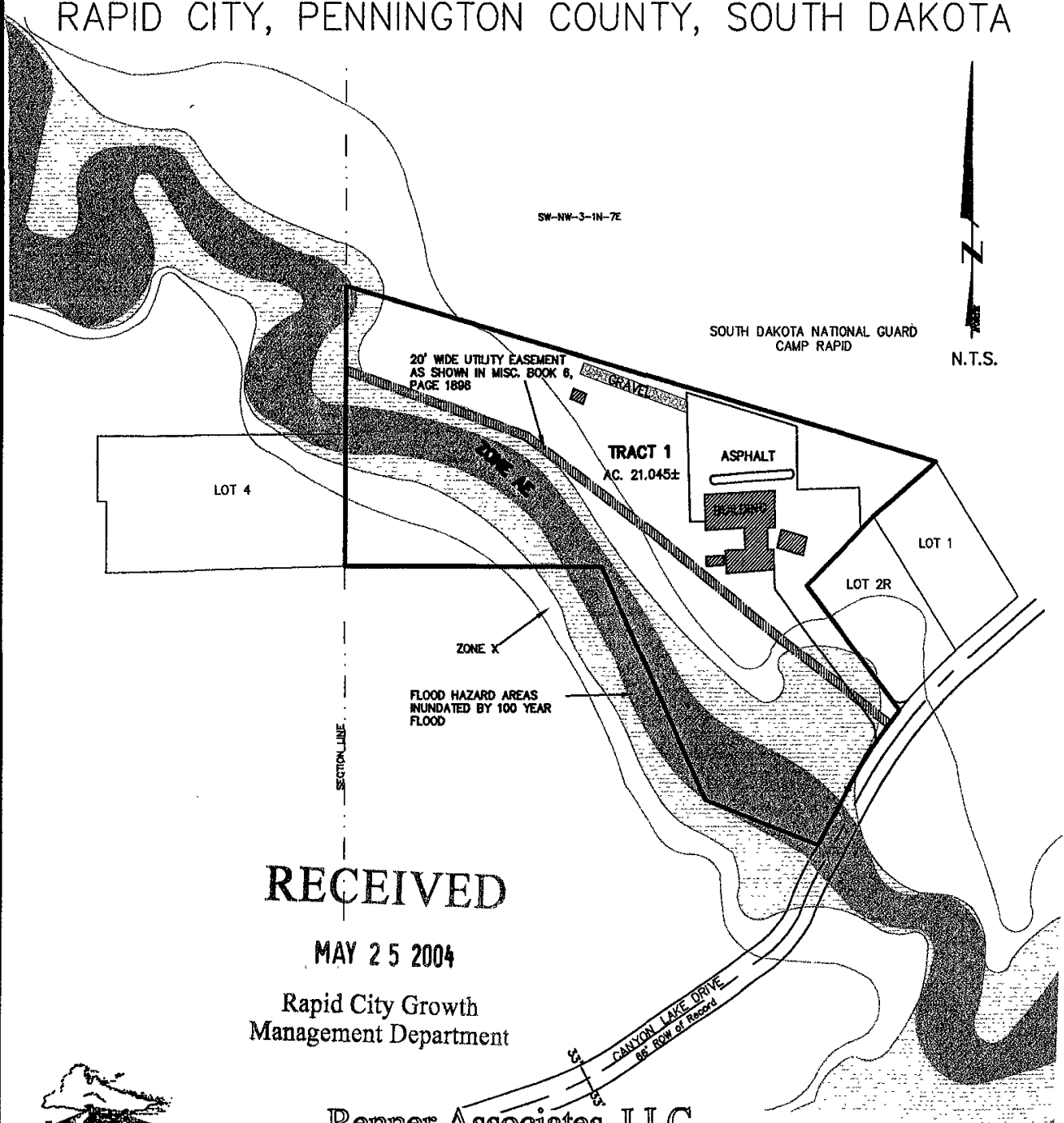
LAYOUT PLAT OF  
TRACT 1

CANYON LAKE SENIOR CITIZENS CENTER

(formerly a portion of the NW1/4 Section 3.)

LOCATED IN THE NW 1/4  
SECTION 3, T1N, R7E, BHM

RAPID CITY, PENNINGTON COUNTY, SOUTH DAKOTA



RECEIVED

MAY 25 2004

Rapid City Growth  
Management Department

Renner Associates, LLC.

616 Sixth St. \* Rapid City, SD 57701 \* 605/721-7310  
FAX: 605/721-7313 \* E-MAIL: Gary@RennerAssoc.com  
\* Spearfish 605/717-0016 \*



CITY HALL 1903