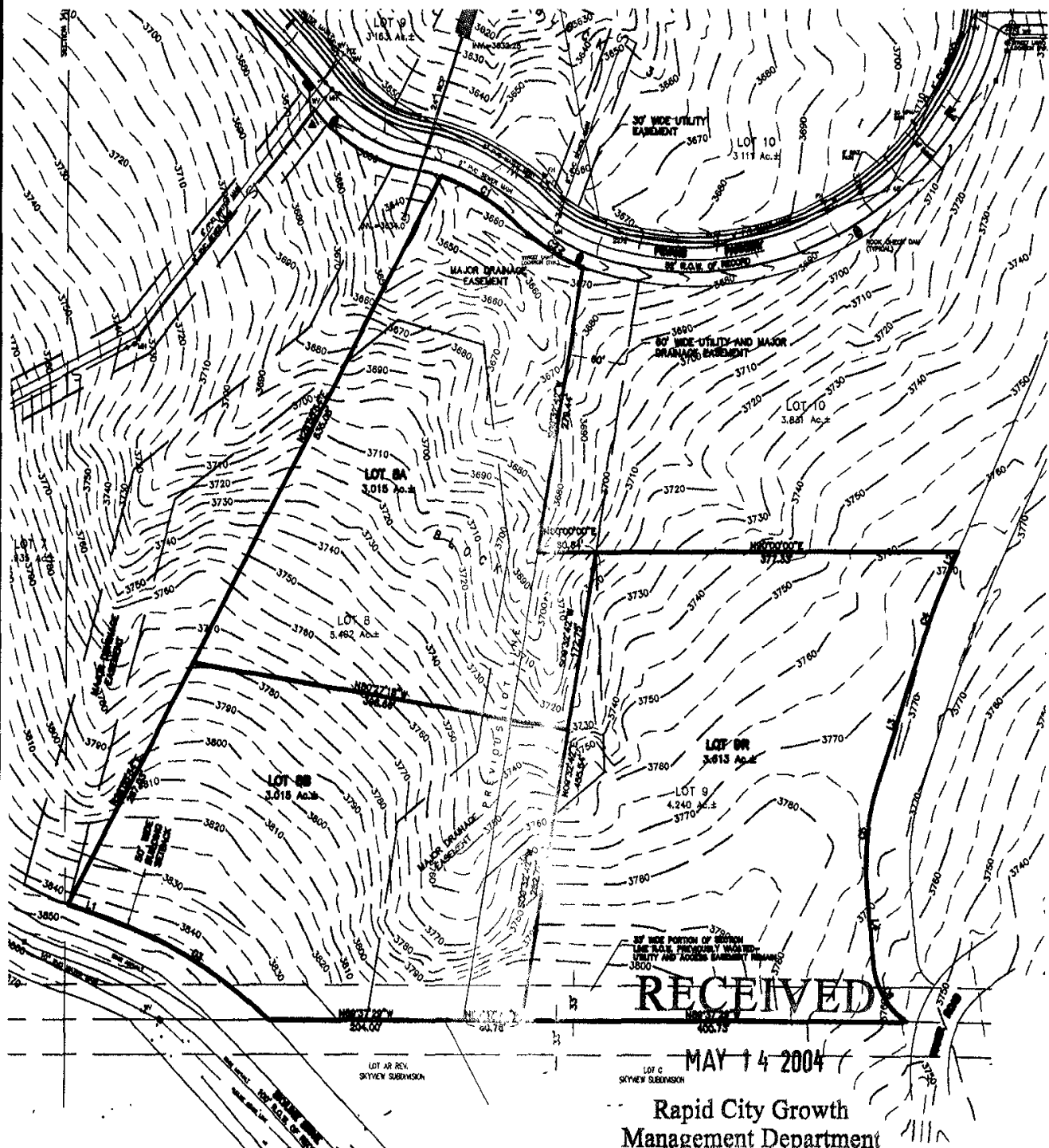


LAYOUT PLAT

LOTS 8A, 8B, & 9R OF BLOCK 2
SKYLINE PINES SUBDIVISION
LOCATED IN THE SW 1/4 OF SECTION 11, T1N, R7E, BHM
RAPID CITY, PENNINGTON COUNTY, SOUTH DAKOTA

MAY 11, 2004
NOT TO SCALE



RECEIVED

MAY 14 2004

Rapid City Growth
Management Department