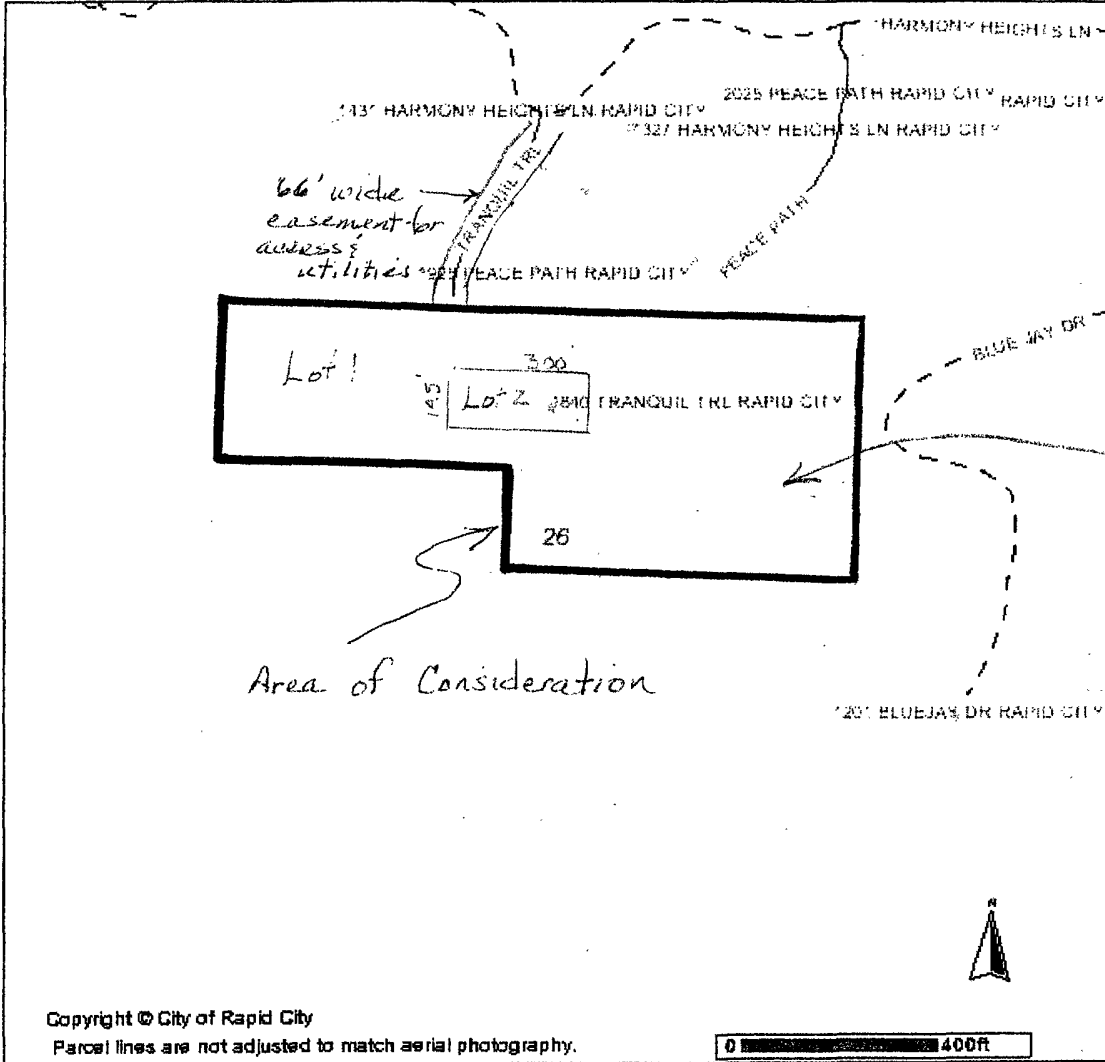


# Proposed Lots 1 & 2 - Macdonald Subdivision

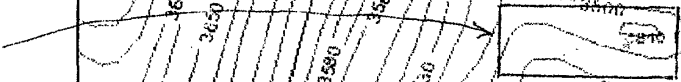
## Address Map

Pri

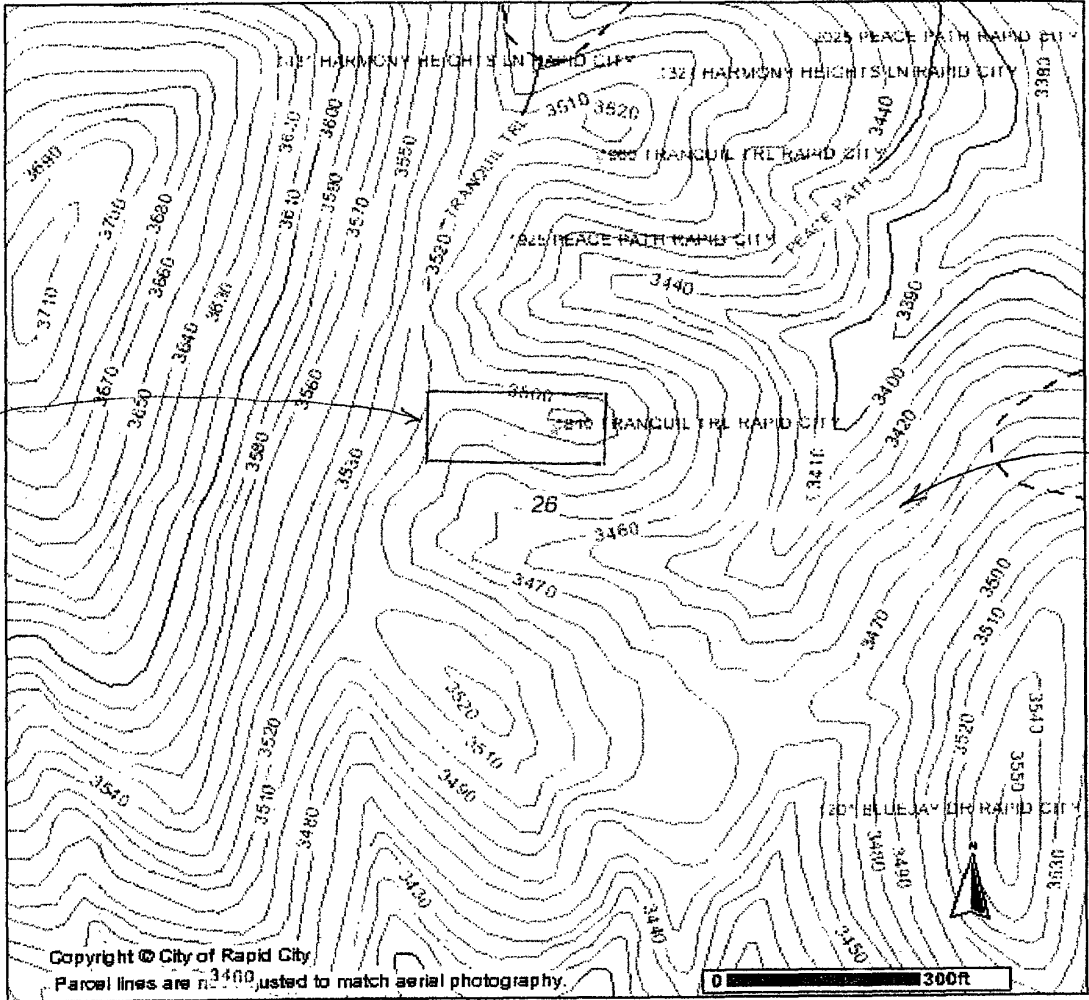


# Topographic Map

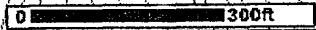
*Boundary Addition*

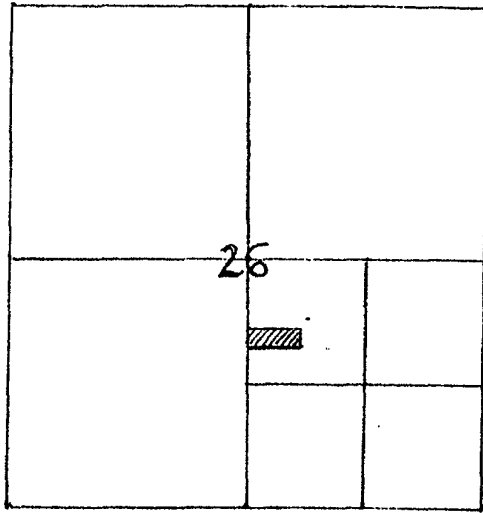


*Boundary Removal*



Copyright © City of Rapid City  
Parcel lines are adjusted to match aerial photography.

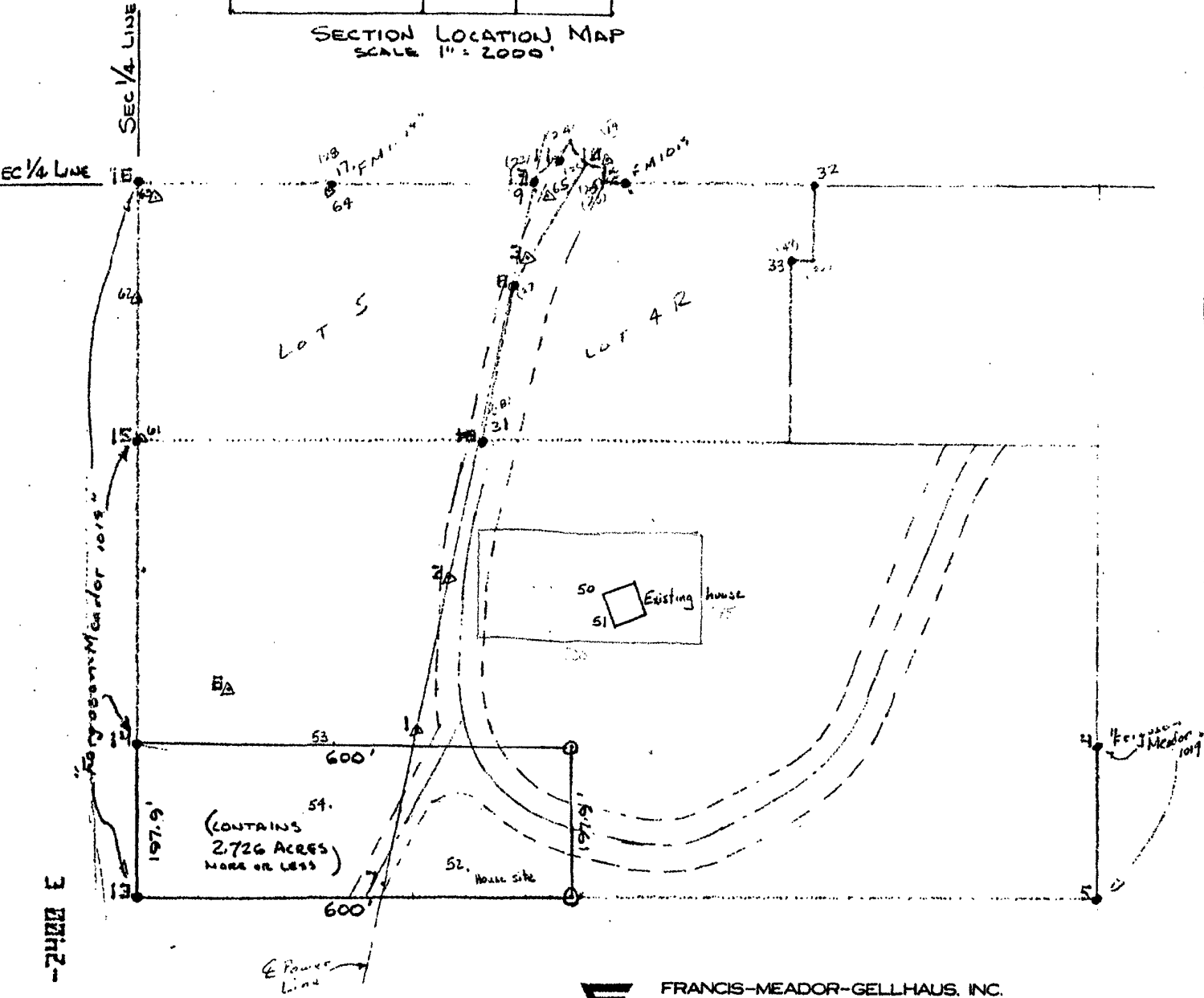




SECTION LOCATION MAP  
SCALE 1" = 2000'



SCALE 1" = 200'  
OCT. 29, 1982



3rd St E

(CONTAINS 2.726 ACRES MORE OR LESS)



FRANCIS-MEADOR-GELLHAUS, INC.

RAPID CITY • Oct. 29, 1982

EN

PENNINGTON COUNTY, SOUTH DAKOTA

