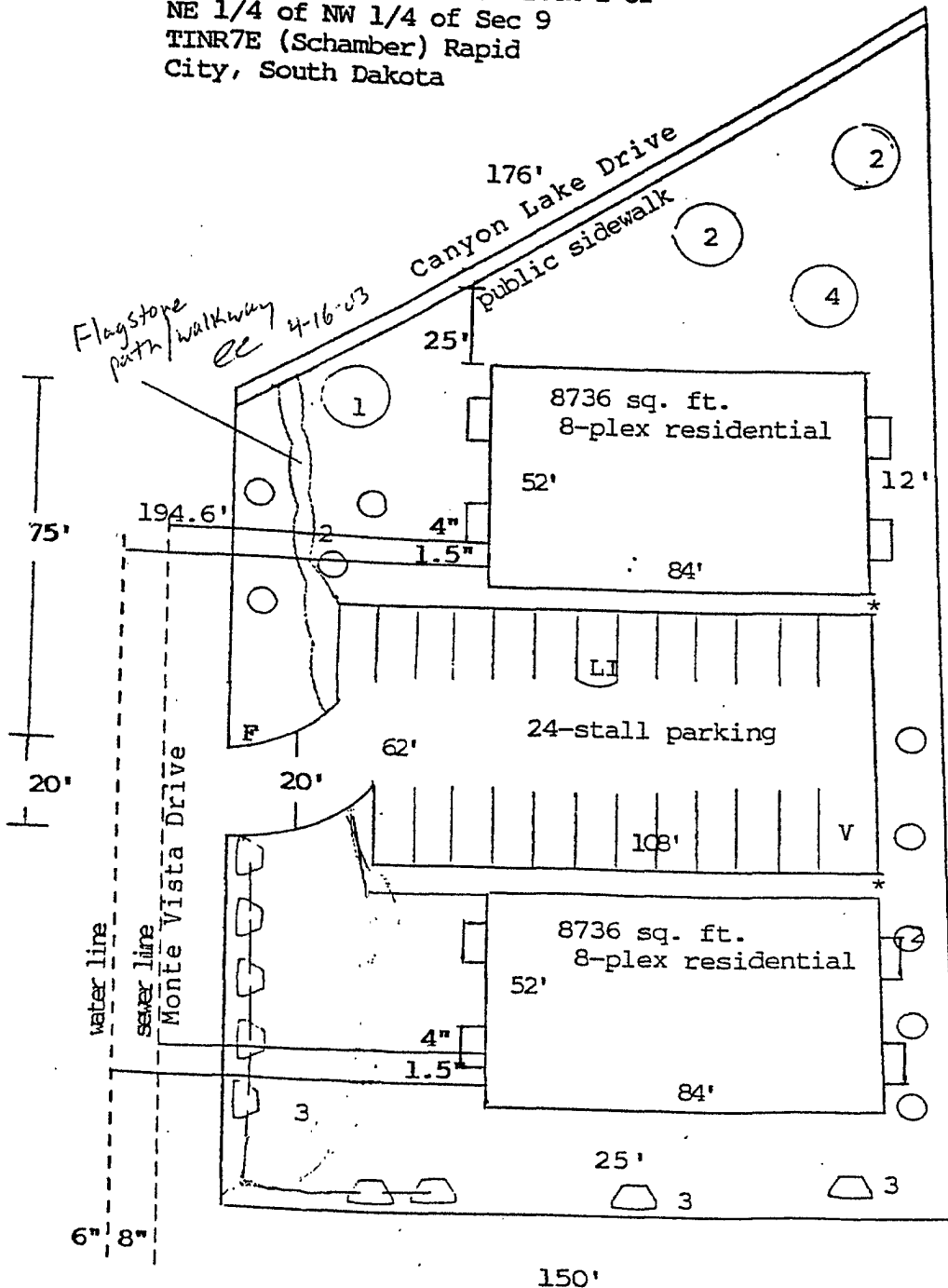


**FINAL**

NOTE: Structures to be stick construction with an elevation of 30'.

LEGAL: Lots 35-38 of Lot 3, Block 2 of NE 1/4 of NW 1/4 of Sec 9 T1NR7E (Schamber) Rapid City, South Dakota



**LEGEND**

- 1. Birch (1)
- 2. Elm (11)
- 3. Shrubs (11) (Lilac)
- 4. Spruce (1)
- F Fire Hydrant
- \* Parking Lighting
- V Van Acc. Handicap
- LI Landscaping Island

286.7'

**Parking Required**  
 16 units @ 1.5 per = 24  
 with 1 van accessible

**Provided = 24, 1 van acc.**

**Landscaping Pts. Required**  
 = 27,494

**Provided**

12 @ 2000 ea.	= 24,000
1 @ 500 ea.	= 500
11 @ 500 ea.	= 5,500
Grass	= 23,108
<b>TOTAL</b>	<b>= 53,108</b>

cur Abel M Nye 5-27-03

