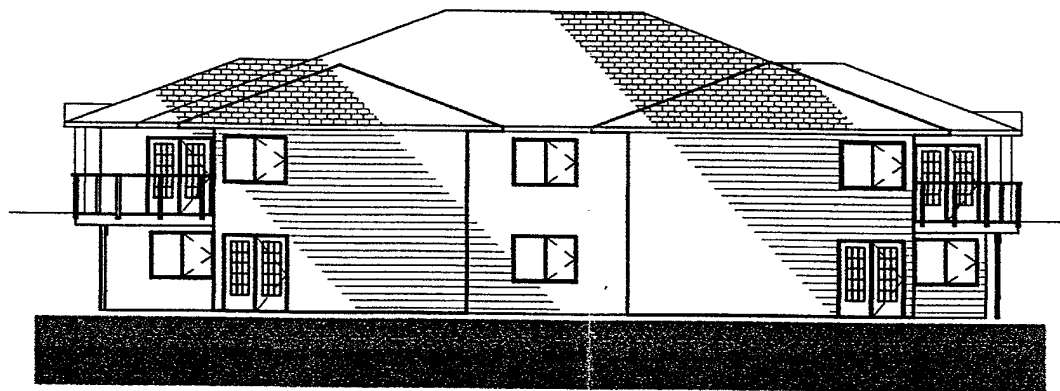
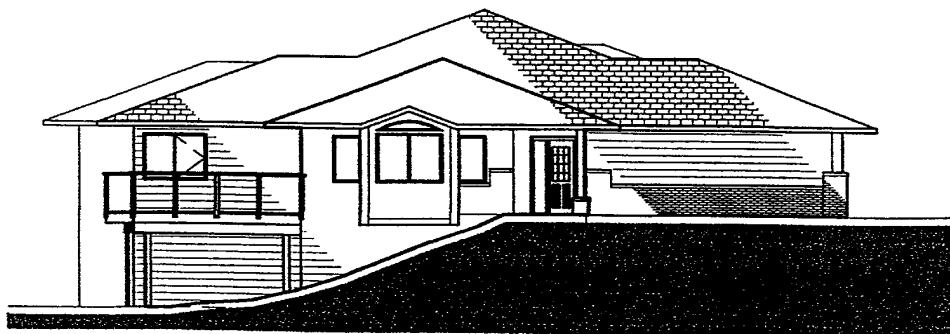


 **DUPLEX FRONT ELEVATION**  
1/16" = 1'-0"



 **DUPLEX REAR ELEVATION**  
1/16" = 1'-0"



 **DUPLEX SIDE ELEVATION**  
1/16" = 1'-0"



 **DUPLEX SIDE ELEVATION**  
1/16" = 1'-0"