

**Exhibit A**  
**LED Fixtures for Energy Park Way**  
**DEV 15-1225**



# D-Series Size 1 LED Area Luminaire

d#series



Type

Hit the Tab key or mouse over the page to see all interactive elements.

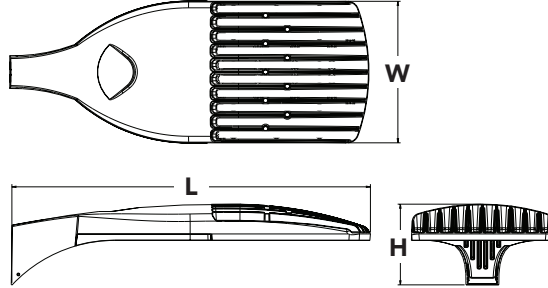
## Introduction

The modern styling of the D-Series is striking yet unobtrusive - making a bold, progressive statement even as it blends seamlessly with its environment.

The D-Series distills the benefits of the latest in LED technology into a high performance, high efficacy, long-life luminaire. The outstanding photometric performance results in sites with excellent uniformity, greater pole spacing and lower power density. It is ideal for replacing 100 – 400W metal halide in pedestrian and area lighting applications with typical energy savings of 65% and expected service life of over 100,000 hours.

## Specifications

<b>EPA:</b>	1.2 ft <sup>2</sup> (0.11 m <sup>2</sup> )
<b>Length:</b>	33" (83.8 cm)
<b>Width:</b>	13" (33.0 cm)
<b>Height:</b>	7-1/2" (19.0 cm)
<b>Weight (max):</b>	27 lbs (12.2 kg)



## Ordering Information

**EXAMPLE: DSX1 LED 60C 1000 40K T3M MVOLT SPA DDBXD**

Series	LEDs	Drive current	Color temperature	Distribution	Voltage	Mounting
<b>DSX1 LED</b>	<b>Forward optics</b> 30C 30 LEDs (one engine) 40C 40 LEDs (two engines) 60C 60 LEDs (two engines) <b>Rotated optics</b> <sup>1</sup> 60C 60 LEDs (two engines)	530 530 mA 700 700 mA 1000 1000 mA (1 A)	30K 3000 K 40K 4000 K 50K 5000 K AMBPC Amber phosphor converted <sup>2</sup>	T1S Type I Short T2S Type II Short T2M Type II Medium T3S Type III Short T3M Type III Medium T4M Type IV Medium TFTM Forward Throw Medium T5VS Type V Very Short T5S Type V Short T5M Type V Medium T5W Type V Wide	MVOLT <sup>3</sup> 120 <sup>3</sup> 208 <sup>3</sup> 240 <sup>3</sup> 277 <sup>3</sup> 347 <sup>4</sup> 480 <sup>4</sup>	<b>Shipped included</b> SPA Square pole mounting RPA Round pole mounting WBA Wall bracket SPUMBA Square pole universal mounting adaptor <sup>5</sup> RPUMBA Round pole universal mounting adaptor <sup>5</sup> <b>Shipped separately</b> KMA8 DDBXD U Mast arm mounting bracket adaptor (specify finish) <sup>6</sup>
Control options				Other options		Finish (required)
<b>Shipped installed</b> PER NEMA twist-lock receptacle only (no controls) <sup>7</sup> PER5 Five-wire receptacle only (no controls) <sup>7,8</sup> PER7 Seven-wire receptacle only (no controls) <sup>7,8</sup> DMG 0-10V dimming driver (no controls) <sup>9</sup> DCR Dimmable and controllable via ROAM® (no controls) <sup>10</sup> DS Dual switching <sup>11,12</sup> PIR Motion sensor, 8-15' mounting height <sup>13</sup>				<b>Shipped installed</b> HS House-side shield <sup>16</sup> WTB Utility terminal block <sup>17</sup> SF Single fuse (120, 277, 347V) <sup>18</sup> DF Double fuse (208, 240, 480V) <sup>18</sup> L90 Left rotated optics <sup>19</sup> R90 Right rotated optics <sup>19</sup>		DDBXD Dark bronze DBLXD Black DNAXD Natural aluminum DWHXD White DDBTXD Textured dark bronze DBL BXD Textured black DNATXD Textured natural aluminum DWHGXD Textured white

### Accessories

Ordered and shipped separately.

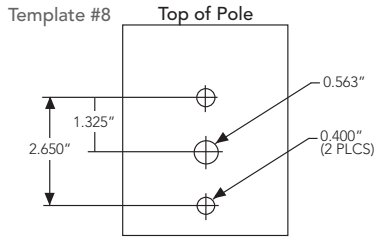
DL127F 1.5 JU	Photocell - SSL twist-lock (120-277V) <sup>20</sup>
DL1347F 1.5 CUL JU	Photocell - SSL twist-lock (347V) <sup>20</sup>
DL480F 1.5 CUL JU	Photocell - SSL twist-lock (480V) <sup>20</sup>
SC U	Shorting cap <sup>20</sup>
DSX1HS 30C U	House-side shield for 30 LED unit
DSX1HS 40C U	House-side shield for 40 LED unit
DSX1HS 60C U	House-side shield for 60 LED unit
PUMBA DDBXD U*	Square and round pole universal mounting bracket (specify finish)
KMA8 DDBXD U	Mast arm mounting bracket adaptor (specify finish) <sup>6</sup>

- ### NOTES
- Rotated optics available with 60C only.
  - AMBPC only available with 530mA or 700mA.
  - MVOLT driver operates on any line voltage from 120-277V (50/60 Hz). Specify 120V, 208V, 240V or 277V options only when ordering with fusing (SF, DF options).
  - Not available with single board, 530mA product (30C 530 or 60C 530 DS). Not available with BL30, BL50 or PNMT options.
  - Available as a separate combination accessory: PUMBA (finish) U; 1.5 G vibration load rating per ANCI C136.31.
  - Must be ordered as a separate accessory; see Accessories information. For use with 2-3/8" mast arm (not included).
  - Photocell ordered and shipped as a separate line item from Acuity Brands Controls. See accessories. Not available with DS option.
  - If ROAM® node required, it must be ordered and shipped as a separate line item from Acuity Brands Controls. Not available with DCR.
  - DMG option for 347V or 480V requires 1000mA.
  - Specifies a ROAM® enabled luminaire with 0-10V dimming capability; PER option required. Additional hardware and services required for ROAM® deployment; must be purchased separately. Call 1-800-442-6745 or email: sales@roomservices.net. N/A with DS, PIR, PIRH, PER5, PER7, BL30, BL50 or PNMT options.

- Requires 40C or 60C. Provides 50/50 luminaire operation via two independent drivers on two separate circuits. N/A with PER, DCR, WTB, PIR or PIRH.
- Requires an additional switched circuit.
- PIR specifies the SensorSwitch SBGR-10-ODP control; PIRH specifies the SensorSwitch SBGR-6-ODP control; see Motion Sensor Guide for details. Dimming driver standard. Not available with DS, PER5 or PER7.
- Dimming driver standard. MVOLT only. Not available with 347V, 480V, DCR, DS, PER5, PER7 or PNMT options.
- Dimming driver standard. MVOLT only. Not available with 347V, 480V, DCR, DS, PER5, PER7, BL30 or BL50.
- Also available as a separate accessory; see Accessories information.
- WTB not available with DS.
- Single fuse (SF) requires 120V, 277V or 347V. Double fuse (DF) requires 208V, 240V or 480V.
- Available with 60 LEDs (60C option) only.
- Requires luminaire to be specified with PER option. Ordered and shipped as a separate line item from Acuity Brands Controls.



## Drilling



DSX1 shares a unique drilling pattern with the AERIS™ family. Specify this drilling pattern when specifying poles, per the table below.

<b>DM19AS</b>	Single unit	<b>DM29AS</b>	2 at 90° *
<b>DM28AS</b>	2 at 180°	<b>DM39AS</b>	3 at 90° *
<b>DM49AS</b>	4 at 90° *	<b>DM32AS</b>	3 at 120° **

**Example:** SSA 20 4C DM19AS DDBXD

Visit Lithonia Lighting's **POLES CENTRAL** to see our wide selection of poles, accessories and educational tools.

\*Round pole top must be 3.25" O.D. minimum.

\*\*Far round pole mounting (RPA) only.

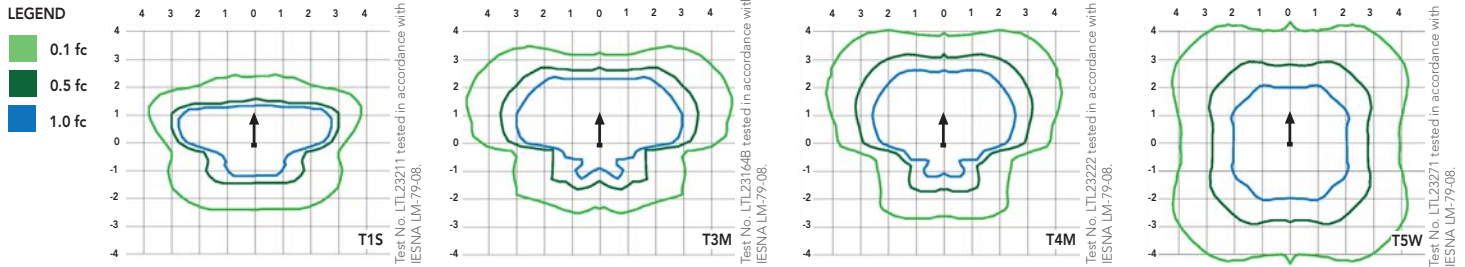
## Tenon Mounting Slipfitter \*\*

Tenon O.D.	Single Unit	2 at 180°	2 at 90°	3 at 120°	3 at 90°	4 at 90°
2-3/8"	AST20-190	AST20-280	AST20-290	AST20-320	AST20-390	AST20-490
2-7/8"	AST25-190	AST25-280	AST25-290	AST25-320	AST25-390	AST25-490
4"	AST35-190	AST35-280	AST35-290	AST35-320	AST35-390	AST35-490

## Photometric Diagrams

To see complete photometric reports or download .ies files for this product, visit Lithonia Lighting's [D-Series Area Size 1 homepage](#).

Isofootcandle plots for the DSX1 LED 60C 1000 40K. Distances are in units of mounting height (20').



## Performance Data

### Lumen Ambient Temperature (LAT) Multipliers

Use these factors to determine relative lumen output for average ambient temperatures from 0-40°C (32-104°F).

Ambient		Lumen Multiplier
0°C	32°F	1.02
10°C	50°F	1.01
20°C	68°F	1.00
<b>25°C</b>	<b>77°F</b>	<b>1.00</b>
30°C	86°F	1.00
40°C	104°F	0.99

### Electrical Load

Number of LEDs	Drive Current (mA)	System Watts	Current (A)					
			120	208	240	277	347	480
30	530	52	0.52	0.30	0.26	0.23	--	--
	700	68	0.68	0.39	0.34	0.30	0.24	0.17
	1000	105	1.03	0.59	0.51	0.45	0.36	0.26
40	530	68	0.67	0.39	0.34	0.29	0.23	0.17
	700	89	0.89	0.51	0.44	0.38	0.31	0.22
	1000	138	1.35	0.78	0.67	0.58	0.47	0.34
60	530	99	0.97	0.56	0.48	0.42	0.34	0.24
	700	131	1.29	0.74	0.65	0.56	0.45	0.32
	1000	209	1.98	1.14	0.99	0.86	0.69	0.50

### Projected LED Lumen Maintenance

Data references the extrapolated performance projections for the platforms noted in a **25°C ambient**, based on 10,000 hours of LED testing (tested per IESNA LM-80-08 and projected per IESNA TM-21-11).

To calculate LLF, use the lumen maintenance factor that corresponds to the desired number of operating hours below. For other lumen maintenance values, contact factory.

Operating Hours	0	25,000	50,000	100,000
Lumen Maintenance Factor	DSX1 LED 60C 1000			
	1.0	0.95	0.93	0.88
	DSX1 LED 60C 700			
	1.0	0.99	0.98	0.96

# Performance Data

## Lumen Output

Lumen values are from photometric tests performed in accordance with IESNA LM-79-08. Data is considered to be representative of the configurations shown, within the tolerances allowed by Lighting Facts. Contact factory for performance data on any configurations not shown here.

LEDs	Drive Current (mA)	System Watts	Dist. Type	30K (3000 K, 70 CRI)					40K (4000 K, 70 CRI)					50K (5000 K, 70 CRI)					AMBPC (Amber Phosphor Converted)				
				Lumens	B	U	G	LPW	Lumens	B	U	G	LPW	Lumens	B	U	G	LPW	Lumens	B	U	G	LPW
30C (30 LEDs)	700 mA	68 W	T1S	5,697	1	0	1	84	7,127	2	0	2	105	7,180	2	0	2	106	4,561	1	0	1	67
			T2S	5,967	2	0	2	88	7,465	2	0	2	110	7,521	2	0	2	111	4,777	1	0	1	70
			T2M	5,773	1	0	2	85	7,222	2	0	2	106	7,276	2	0	2	107	4,622	1	0	2	68
			T3S	5,901	1	0	2	87	7,382	2	0	2	109	7,437	2	0	2	109	4,724	1	0	1	69
			T3M	5,872	1	0	2	86	7,346	2	0	2	108	7,401	2	0	2	109	4,701	1	0	2	69
			T4M	5,882	1	0	2	87	7,359	2	0	2	108	7,414	2	0	2	109	4,709	1	0	2	69
			TFTM	5,793	1	0	2	85	7,247	1	0	2	107	7,301	1	0	2	107	4,638	1	0	2	68
			TSVS	6,148	2	0	0	90	7,691	3	0	1	113	7,749	3	0	1	114	4,922	2	0	0	72
			TSS	6,074	2	0	0	89	7,598	3	0	0	112	7,655	3	0	0	113	4,863	2	0	0	72
			TSM	6,150	3	0	1	90	7,694	3	0	2	113	7,752	3	0	2	114	4,924	3	0	1	72
	TSW	5,979	3	0	1	88	7,479	3	0	2	110	7,536	3	0	2	111	4,787	3	0	1	70		
	1000 mA	105 W	T1S	7,913	2	0	2	75	9,899	2	0	2	94	9,973	2	0	2	95					
			T2S	8,288	2	0	2	79	10,368	2	0	2	99	10,446	2	0	2	99					
			T2M	8,019	2	0	2	76	10,031	2	0	3	96	10,106	2	0	3	96					
			T3S	8,196	2	0	2	78	10,253	2	0	2	98	10,330	2	0	2	98					
			T3M	8,156	2	0	2	78	10,202	2	0	2	97	10,279	2	0	2	98					
			T4M	8,170	2	0	2	78	10,220	2	0	2	97	10,297	2	0	2	98					
			TFTM	8,046	2	0	2	77	10,065	2	0	3	96	10,141	2	0	3	97					
			TSVS	8,539	3	0	1	81	10,682	3	0	1	102	10,762	3	0	1	102					
			TSS	8,436	3	0	1	80	10,553	3	0	1	101	10,632	3	0	1	101					
TSM			8,542	3	0	2	81	10,686	4	0	2	102	10,766	4	0	2	103						
TSW	8,304	3	0	2	79	10,388	4	0	2	99	10,466	4	0	2	100								
40C (40 LEDs)	700 mA	89 W	T1S	7,511	2	0	2	84	9,396	2	0	2	106	9,467	2	0	2	90	6,014	1	0	1	68
			T2S	7,868	2	0	2	88	9,842	2	0	2	111	9,916	2	0	2	94	6,299	2	0	2	71
			T2M	7,612	2	0	2	86	9,522	2	0	3	107	9,594	2	0	3	91	6,094	2	0	2	68
			T3S	7,780	2	0	2	87	9,733	2	0	2	109	9,806	2	0	2	93	6,229	1	0	2	70
			T3M	7,742	2	0	2	87	9,685	2	0	2	109	9,758	2	0	2	93	6,198	2	0	2	70
			T4M	7,756	2	0	2	87	9,702	2	0	2	109	9,775	2	0	2	93	6,209	1	0	2	70
			TFTM	7,638	2	0	2	86	9,555	2	0	2	107	9,627	2	0	2	92	6,115	1	0	2	69
			TSVS	8,106	3	0	1	91	10,140	3	0	1	114	10,216	3	0	1	97	6,490	2	0	0	73
			TSS	8,008	3	0	1	90	10,017	3	0	1	113	10,093	3	0	1	96	6,411	2	0	0	72
			TSM	8,109	3	0	2	91	10,144	4	0	2	114	10,220	4	0	2	97	6,492	3	0	1	73
	TSW	7,883	3	0	2	89	9,861	4	0	2	111	9,936	4	0	2	95	6,311	3	0	2	71		
	1000 mA	138 W	T1S	10,384	2	0	2	75	12,990	3	0	3	94	13,088	3	0	3	95					
			T2S	10,876	2	0	2	79	13,606	3	0	3	99	13,708	3	0	3	99					
			T2M	10,523	2	0	3	76	13,164	3	0	3	95	13,263	3	0	3	96					
			T3S	10,756	2	0	2	78	13,455	2	0	2	97	13,556	3	0	3	98					
			T3M	10,703	2	0	2	78	13,389	3	0	3	97	13,490	3	0	3	98					
			T4M	10,722	2	0	2	78	13,412	3	0	3	97	13,513	3	0	3	98					
			TFTM	10,559	2	0	3	77	13,209	2	0	3	96	13,308	2	0	3	96					
			TSVS	11,206	3	0	1	81	14,018	4	0	1	102	14,124	4	0	1	102					
			TSS	11,070	3	0	1	80	13,848	3	0	1	100	13,953	3	0	1	101					
TSM			11,210	4	0	2	81	14,023	4	0	2	102	14,129	4	0	2	102						
TSW	10,898	4	0	2	79	13,633	4	0	2	99	13,735	4	0	2	100								
60C (60 LEDs)	700 mA	131 W	T1S	11,182	2	0	2	81	13,988	3	0	3	101	14,093	3	0	3	102	8,952	2	0	2	68
			T2S	11,712	3	0	3	85	14,651	3	0	3	106	14,761	3	0	3	107	9,377	2	0	2	72
			T2M	11,332	2	0	3	82	14,175	3	0	3	103	14,282	3	0	3	103	9,072	2	0	2	69
			T3S	11,582	2	0	2	84	14,489	3	0	3	105	14,598	3	0	3	106	9,273	2	0	2	71
			T3M	11,525	2	0	2	84	14,418	3	0	3	104	14,526	3	0	3	105	9,227	2	0	2	70
			T4M	11,546	2	0	2	84	14,443	3	0	3	105	14,552	3	0	3	105	9,243	2	0	2	71
			TFTM	11,370	2	0	3	82	14,224	2	0	3	103	14,331	2	0	3	104	9,103	2	0	2	69
			TSVS	12,067	3	0	1	87	15,095	4	0	1	109	15,209	4	0	1	110	9,661	3	0	1	74
			TSS	11,921	3	0	1	86	14,913	4	0	1	108	15,025	4	0	1	109	9,544	3	0	1	73
			TSM	12,071	4	0	2	87	15,101	4	0	2	109	15,214	4	0	2	110	9,665	3	0	2	74
	TSW	11,735	4	0	2	85	14,680	4	0	2	106	14,791	4	0	2	107	9,395	4	0	2	72		
	1000 mA	209 W	T1S	15,307	3	0	3	73	19,148	3	0	3	92	19,292	3	0	3	92					
			T2S	16,033	3	0	3	77	20,056	3	0	3	96	20,207	3	0	3	97					
			T2M	15,512	3	0	3	74	19,405	3	0	3	93	19,551	3	0	3	94					
			T3S	15,855	3	0	3	76	19,834	3	0	3	95	19,983	3	0	3	96					
			T3M	15,777	3	0	3	75	19,736	3	0	4	94	19,885	3	0	4	95					
			T4M	15,805	3	0	3	76	19,771	3	0	4	95	19,920	3	0	4	95					
			TFTM	15,565	3	0	3	74	19,471	3	0	4	93	19,617	3	0	4	94					
			TSVS	16,519	4	0	1	79	20,664	4	0	1	99	20,820	4	0	1	100					
			TSS	16,319	4	0	1	78	20,414	4	0	1	98	20,567	4	0	1	98					
TSM			16,525	4	0	2	79	20,672	5	0	3	99	20,827	5	0	3	100						
TSW	16,065	4	0	3	77	20,096	5	0	3	96	20,247	5	0	3	97								

## FEATURES & SPECIFICATIONS

### INTENDED USE

The sleek design of the D-Series Size 1 reflects the embedded high performance LED technology. It is ideal for many commercial and municipal applications, such as parking lots, plazas, campuses, and streetscapes.

### CONSTRUCTION

Single-piece die-cast aluminum housing has integral heat sink fins to optimize thermal management through conductive and convective cooling. Modular design allows for ease of maintenance and future light engine upgrades. The LED driver is mounted in direct contact with the casting to promote low operating temperature and long life. Housing is completely sealed against moisture and environmental contaminants (IP65). Low EPA (1.2 ft<sup>2</sup>) for optimized pole wind loading.

### FINISH

Exterior parts are protected by a zinc-infused Super Durable TGIC thermoset powder coat finish that provides superior resistance to corrosion and weathering. A tightly controlled multi-stage process ensures a minimum 3 mils thickness for a finish that can withstand extreme climate changes without cracking or peeling. Available in both textured and non-textured finishes.

### OPTICS

Precision-molded proprietary acrylic lenses are engineered for superior area lighting distribution, uniformity, and pole spacing. Light engines are available in standard 4000 K (70 minimum CRI) or optional 3000 K (80 minimum CRI) or 5000 K (70 CRI) configurations. The D-Series Size 1 has zero uplight and qualifies as a Nighttime Friendly™ product, meaning it is consistent with the LEED® and Green Globes™ criteria for eliminating wasteful uplight.

### ELECTRICAL

Light engine configurations consist of 30, 40 or 60 high-efficacy LEDs mounted to metal-core circuit boards to maximize heat dissipation and promote long life (up to L96/100,000 hours at 25°C). Class 1 electronic drivers are designed to have a power factor >90%, THD <20%, and an

expected life of 100,000 hours with <1% failure rate. Easily serviceable 10kV or 6kV surge protection device meets a minimum Category C Low operation (per ANSI/IEEE C62.41.2).

### INSTALLATION

Included mounting block and integral arm facilitate quick and easy installation. Stainless steel bolts fasten the mounting block securely to poles and walls, enabling the D-Series Size 1 to withstand up to a 3.0 G vibration load rating per ANSI C136.31. The D-Series Size 1 utilizes the AERIS™ series pole drilling pattern. Optional terminal block, tool-less entry, and NEMA photocontrol receptacle are also available.

### LISTINGS

UL Listed for wet locations. Light engines are IP66 rated; luminaire is IP65 rated. Rated for -40°C minimum ambient. U.S. Patent No. D672,492 S. International patent pending.

DesignLights Consortium® (DLC) qualified product. Not all versions of this product may be DLC qualified. Please check the DLC Qualified Products List at [www.designlights.org](http://www.designlights.org) to confirm which versions are qualified.

### WARRANTY

Five-year limited warranty. Full warranty terms located at: [www.acuitybrands.com/CustomerResources/Terms\\_and\\_conditions.aspx](http://www.acuitybrands.com/CustomerResources/Terms_and_conditions.aspx)

**Note:** Actual performance may differ as a result of end-user environment and application. All values are design or typical values, measured under laboratory conditions at 25 °C. Specifications subject to change without notice.

# Energy Park Drive Light Poles

## FEATURES & SPECIFICATIONS

**INTENDED USE** — Square straight steel pole for up to 39-foot mounting height.

**CONSTRUCTION** — Weldable-grade, hot-rolled, commercial-quality carbon steel tubing with a minimum yield of 55,000 psi (11-gauge), or 50,000 psi (7-gauge). Uniform wall thickness of .1196" or .1793". Shaft is one-piece with a full-length longitudinal high-frequency electric resistance weld. Uniformly square in cross-section with flat sides, small corner radii and excellent torsional qualities. Available shaft widths are 4, 5 and 6 inches.

Anchor base is fabricated from hot-rolled carbon steel plate conforming to ASTM A36, that meets or exceeds a minimum-yield strength of 36,000 psi. Base plate and shaft are circumferentially welded top and bottom. Base cover is finished to match pole.

A handhole having nominal dimensions of 3" x 5" for all shafts. Included is a cover with attachment screws.

Top cap provided with all drill-mount and open top "PT" poles.

Fasteners are high-strength galvanized, zinc-plated or stainless steel.

Finish: Must specify finish.

Grounding: Provision located immediately inside handhole rim. Grounding hardware is not included (provided by others).

Anchor bolts: Top portion of anchor bolt is galvanized per ASTM A-153. Made of steel rod having a minimum yield strength of 55,000 psi.

Note: Specifications subject to change without notice.

Actual performance may differ as a result of end-user environment and application.

Type



**Anchor Base Poles**

# SSS

**SQUARE STRAIGHT STEEL**

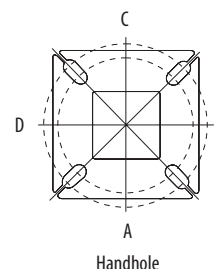
**ORDERING INFORMATION** Lead times will vary depending on options selected. Consult with your sales representative. **Example:** SSS 20 5C DM19 DDB

SSS Series	Nominal fixture mounting height	Nominal shaft base size/wall thickness	Mounting <sup>1</sup>	Options	Finish <sup>10</sup>	
SSS	10 – 39 feet (See back page.)	(See back page.)	<p><b>Tenon mounting</b></p> <p>PT Open top (includes top cap)</p> <p>T20 2-3/8" O.D. (2" NPS)</p> <p>T25 2-7/8" O.D. (2-1/2" NPS)</p> <p>T30 3-1/2" O.D. (3" NPS)</p> <p>T35 4" O.D. (3-1/2" NPS)</p> <p><b>Drill mounting<sup>2</sup></b></p> <p>DM19 1 at 90°</p> <p>DM28 2 at 180°</p> <p>DM28 PL 2 at 180° with one side plugged</p> <p>DM29 2 at 90°</p> <p>DM39 3 at 90°</p> <p>DM49 4 at 90°</p> <p><b>CSX/DSX/AERIS™/OMERO™ Drill mounting<sup>2</sup></b></p> <p>DM19AS 1 at 90°</p> <p>DM28AS 2 at 180°</p> <p>DM29AS 2 at 90°</p> <p>DM39AS 3 at 90°</p> <p>DM49AS 4 at 90°</p>	<p><b>AERIS™ Suspend drill mounting<sup>2,3</sup></b></p> <p>DM19AST_ 1 at 90°</p> <p>DM28AST_ 2 at 180°</p> <p>DM29AST_ 2 at 90°</p> <p>DM39AST_ 3 at 90°</p> <p>DM49AST_ 4 at 90°</p> <p><b>OMERO™ Suspend drill mounting<sup>2,3</sup></b></p> <p>DM19MRT_ 1 at 90°</p> <p>DM28MRT_ 2 at 180°</p> <p>DM29MRT_ 2 at 90°</p> <p>DM39MRT_ 3 at 90°</p> <p>DM49MRT_ 4 at 90°</p>	<p><b>Shipped installed</b></p> <p>L/AB Less anchor bolts</p> <p>VD Vibration damper</p> <p>TP Tamper proof</p> <p>H1-18Sxx Horizontal arm bracket (1 fixture)<sup>4,5</sup></p> <p>FDLxx Festoon outlet less electrical<sup>4</sup></p> <p>CPL12xx 1/2" coupling<sup>4</sup></p> <p>CPL34xx 3/4" coupling<sup>4</sup></p> <p>CPL1xx 1" coupling<sup>4</sup></p> <p>NPL12xx 1/2" threaded nipple<sup>4</sup></p> <p>NPL34xx 3/4" threaded nipple<sup>4</sup></p> <p>NPL1xx 1" threaded nipple<sup>4</sup></p> <p>EHHxx Extra handhole<sup>4,6</sup></p> <p>MAEX Match existing<sup>7</sup></p> <p>USPOM United States point of manufacture<sup>8</sup></p> <p>IC Interior coating<sup>9</sup></p>	<p><b>Standard colors</b></p> <p>DDB Dark bronze</p> <p>DWH White</p> <p>DBL Black</p> <p>DMB Medium bronze</p> <p>DNA Natural aluminum</p> <p><b>Classic colors</b></p> <p>DSS Sandstone</p> <p>DGC Charcoal gray</p> <p>DTG Tennis green</p> <p>DBR Bright red</p> <p>DSB Steel blue</p> <p><b>Architectural colors (powder finish)<sup>10</sup></b></p>

**NOTES:**

- PT open top poles include top cap. When ordering tenon mounting and drill mounting for the same pole, follow this example: DM28/T20. The combination includes a required extra handhole.
- The drilling template to be used for a particular luminaire depends on the luminaire that is used. Refer to the Technical Data Section of the Outdoor Binder for Drilling Templates.
- Insert "1" or "2" to designate fixture size; e.g. DM19AST2.
- Specify location and orientation when ordering option.  
For 1st "x": Specify the height in feet above base of pole.  
Example: 5ft = 5 and 20ft = 20  
For 2nd "x": Specify orientation from handhole (A,B,C,D)  
Refer to the Handhole Orientation diagram above.
- Horizontal arm is 18" x 2-3/8" O.D. tenon standard.
- Combination of tenon-top and drill mount includes extra handhole.
- Must add original order number
- Use when mill certifications are required.
- Provides enhanced corrosion resistance.
- Additional colors available; see [www.lithonia.com/archcolors](http://www.lithonia.com/archcolors) or Architectural Colors brochure (Form No. 794.3). Powder finish standard.

**HANDHOLE ORIENTATION**



**IMPORTANT INSTALLATION NOTES:**

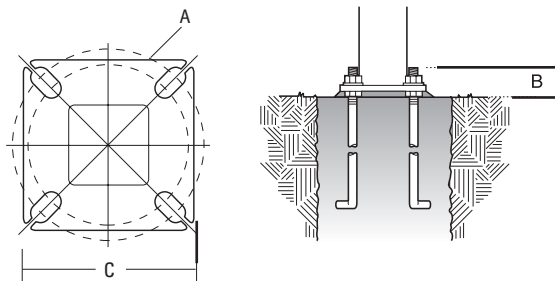
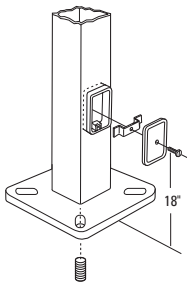
- Do not erect poles without having fixtures installed.
- Factory-supplied templates must be used when setting anchor bolts. Lithonia Lighting will not accept claim for incorrect anchorage placement due to failure to use Lithonia Lighting factory templates.
- If poles are stored outside, all protective wrapping must be removed immediately upon delivery to prevent finish damage.
- Lithonia Lighting is not responsible for the foundation design.

# SSS Square Straight Steel Poles

## TECHNICAL INFORMATION

Catalog Number	Nominal mount ht. (ft)	Pole Shaft Size (in x ft)	Wall Thickness (in)	Gauge	EPA (ft <sup>2</sup> ) with 1.3 gust						Bolt Circle (in)	Bolt Size (in x in x in)	Approximate ship (lbs)
					80 mph	Max. weight	90 mph	Max. weight	100 mph	Max. weight			
SSS 10 4C	10	4.0 x 10.0	0.1196	11	30.6	765	23.8	595	18.9	473	8--9	3/4 x 18 x 3	75
SSS 12 4C	12	4.0 x 12.0	0.1196	11	24.4	610	18.8	470	14.8	370	8--9	3/4 x 18 x 3	90
SSS 14 4C	14	4.0 x 14.0	0.1196	11	19.9	498	15.1	378	11.7	293	8--9	3/4 x 18 x 3	100
SSS 16 4C	16	4.0 x 16.0	0.1196	11	15.9	398	11.8	295	8.9	223	8--9	3/4 x 18 x 3	115
SSS 18 4C	18	4.0 x 18.0	0.1196	11	12.6	315	9.2	230	6.7	168	8--9	3/4 x 18 x 3	125
SSS 20 4C	20	4.0 x 20.0	0.1196	11	9.6	240	6.7	167	4.5	150	8--9	3/4 x 18 x 3	140
SSS 20 4G	20	4.0 x 20.0	0.1793	7	14	350	11	275	8	200	8--9	3/4 x 30 x 3	198
SSS 20 5C	20	5.0 x 20.0	0.1196	11	17.7	443	12.7	343	9.4	235	10--12	1 x 36 x 4	185
SSS 20 5G	20	5.0 x 20.0	0.1793	7	28.1	703	21.4	535	16.2	405	10--12	1 x 36 x 4	265
SSS 25 4C	25	4.0 x 25.0	0.1196	11	4.8	150	2.6	100	1	50	8--9	3/4 x 18 x 3	170
SSS 25 4G	25	4.0 x 25.0	0.1793	7	10.8	270	7.7	188	5.4	135	8--9	3/4 x 30 x 3	245
SSS 25 5C	25	5.0 x 25.0	0.1196	11	9.8	245	6.3	157	3.7	150	10--12	1 x 36 x 4	225
SSS 25 5G	25	5.0 x 25.0	0.1793	7	18.5	463	13.3	333	9.5	238	10--12	1 x 36 x 4	360
SSS 30 4G	30	4.0 x 30.0	0.1793	7	6.7	168	4.4	110	2.6	65	8--9	3/4 x 30 x 3	295
SSS 30 5C	30	5.0 x 30.0	0.1196	11	4.7	150	2	50	--	--	10--12	1 x 36 x 4	265
SSS 30 5G	30	5.0 x 30.0	0.1793	7	10.7	267	6.7	167	3.9	100	10--12	1 x 36 x 4	380
SSS 30 6G	30	6.0 x 30.0	0.1793	7	19	475	13.2	330	9	225	11--13	1 x 36 x 4	520
SSS 35 5G	35	5.0 x 35.0	0.1793	7	5.9	150	2.5	100	--	--	10--12	1 x 36 x 4	440
SSS 35 6G	35	6.0 x 35.0	0.1793	7	12.4	310	7.6	190	4.2	105	11--13	1 x 36 x 4	540
SSS 39 6G	39	6.0 x 39.0	0.1793	7	7.2	180	3	75	--	--	11--13	1 x 36 x 4	605

## BASE DETAIL



## POLE DATA

Shaft base size	Bolt circle A	Bolt projection B	Base square C	Template description	Anchor bolt description	Anchor bolt and template number
4"C	8-1/2"	2-3/4"-4"	8"	ABTEMPLATE PJ50004	AB18-0	ABSSS-4C
4"G	8-1/2"	2-3/4"-4"	8"	ABTEMPLATE PJ50004	AB30-0	ABSSS-4G
5"	10"-12"	3-3/8"-4"	11"	ABTEMPLATE PJ50010	AB36-0	ABSSS-5
6"	11"-13"	3-3/8"-4"	12-1/2"	ABTEMPLATE PJ50011	AB36-0	N/A

### IMPORTANT:

• These specifications are intended for general purposes only. Lithonia reserves the right to change material or design, without prior notice, in a continuing effort to upgrade its products.