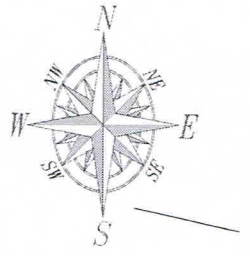


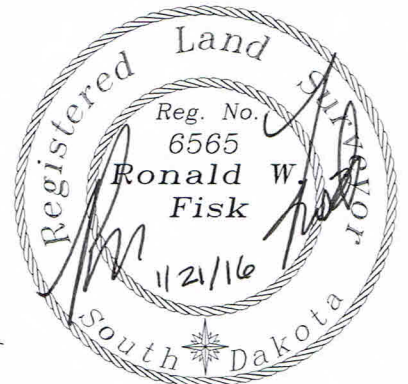
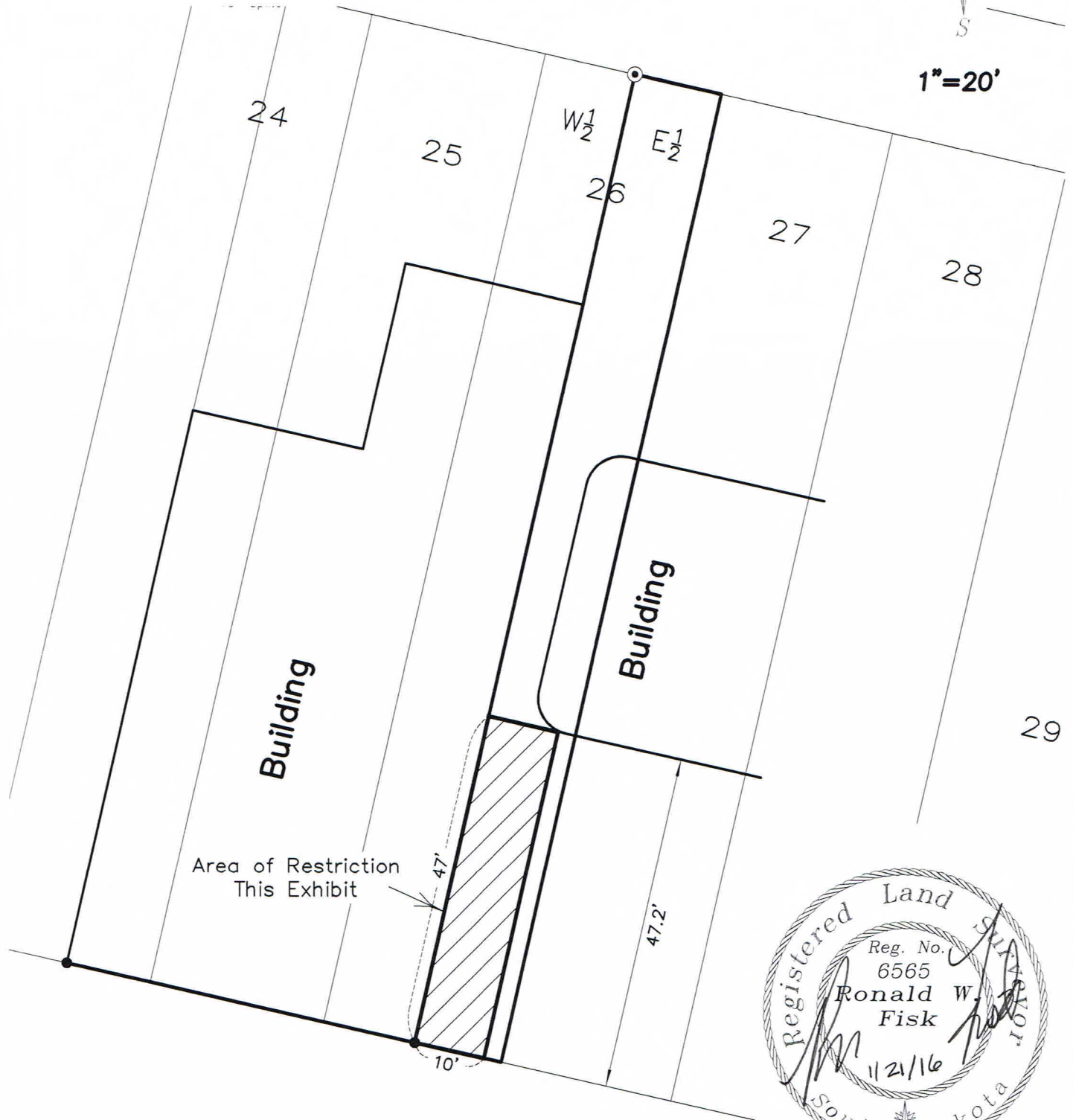
EXHIBIT A

NO BUILD RESTRICTION

THE E1/2 OF LOT 26, BLOCK 103, ORIGINAL TOWN OF
RAPID CITY, PENNINGTON COUNTY, SOUTH DAKOTA



1"=20'



PREPARED BY:
FISK LAND SURVEYING & CONSULTING ENGINEERS, INC.
P.O. BOX 8154, RAPID CITY, SD 57709 (605) 348-1538 January 18, 2016

NO. 16-01-03