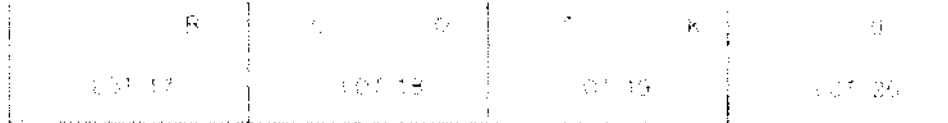


EXHIBIT 'A'

VACATION OF A PORTION OF WEST RAPID STREET RIGHT-OF-WAY, ADJACENT TO LOTS 13, 14, 15, AND 16 OF BLOCK 16 IN GREEN ACRES ADDITION

LOCATED IN SW1/4 OF SW1/4,
SECTION 34, T2N, R7E, BHM
RAPID CITY, PENNINGTON COUNTY, SOUTH DAKOTA



SEPT 24 2015

0 10' 20'

SCALE: 1" = 20'

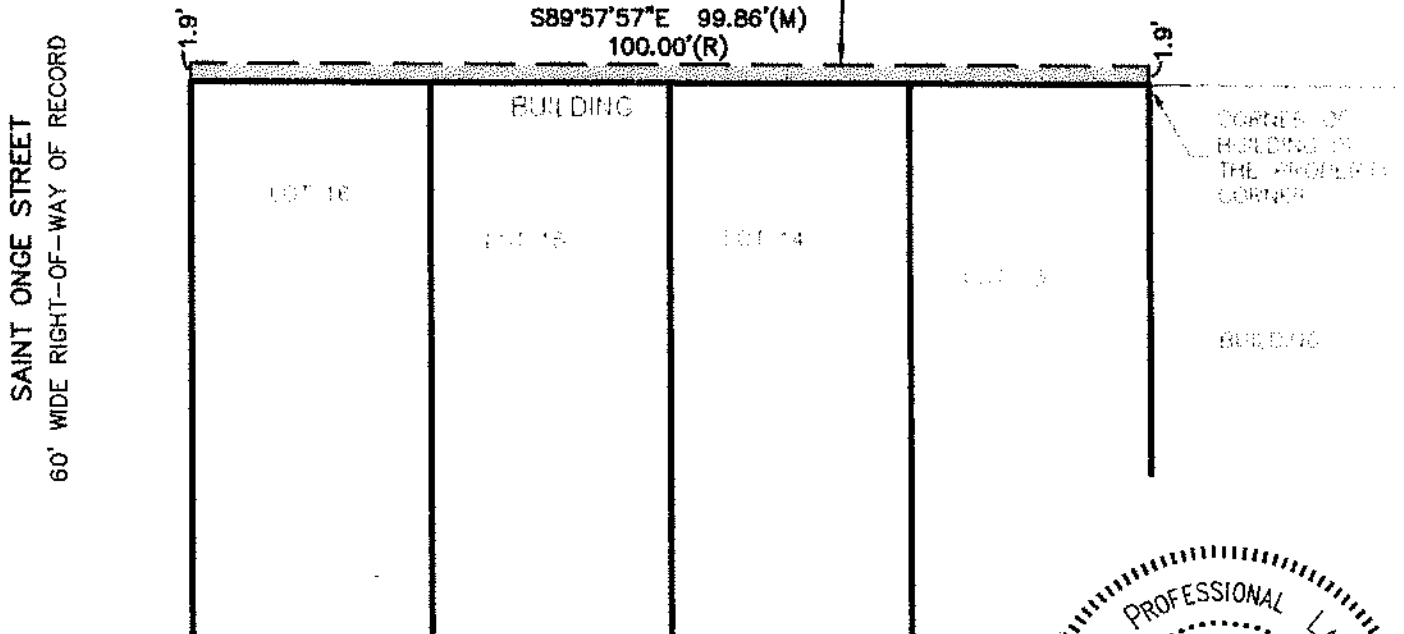
RECEIVED

OCT 07 2015

Rapid City Community Planning
& Development Services

WEST RAPID STREET
64' WIDE RIGHT-OF-WAY OF RECORD

PORTION OF
RIGHT-OF-WAY
TO BE VACATED
THIS DOCUMENT
0.004 Ac.±



RENNER ASSOCIATES, LLC
CIVIL ENGINEERING • LAND SURVEYING

616 SIXTH STREET PH: 605. 721-7310
RENNERASSOC.COM RAPID CITY, SD 57701 FX: 605. 721-7313

REGISTERED PROFESSIONAL LAND SURVEYOR
REG. NO. 9213
ERIC D. HOWARD
SOUTH DAKOTA
★ 9-24-15