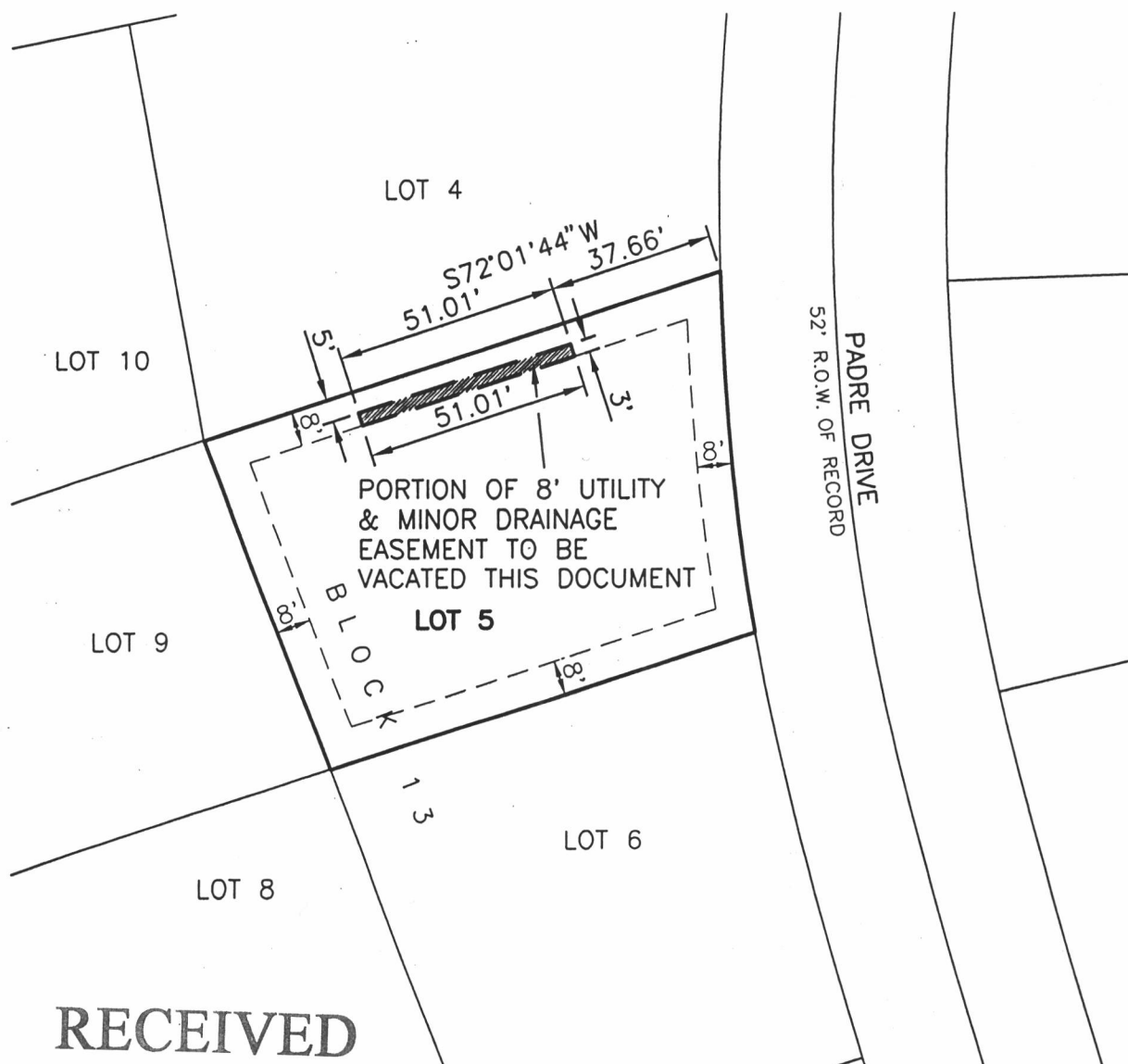


EXHIBIT 'A'

VACATION OF A PORTION OF THE 8' UTILITY AND MINOR DRAINAGE EASEMENT LOT 5 OF BLOCK 13 OF ELKS COUNTRY ESTATES

LOCATED IN THE E $\frac{1}{2}$ OF THE SE $\frac{1}{4}$,
SECTION 16, T1N, R8E, B.H.M.,
RAPID CITY, PENNINGTON COUNTY, SOUTH DAKOTA



RECEIVED

JAN 13 2015

RAPID CITY COMMUNITY PLANNING
& DEVELOPMENT SERVICES

NOVEMBER 12, 2014



SCALE: 1" = 40'

