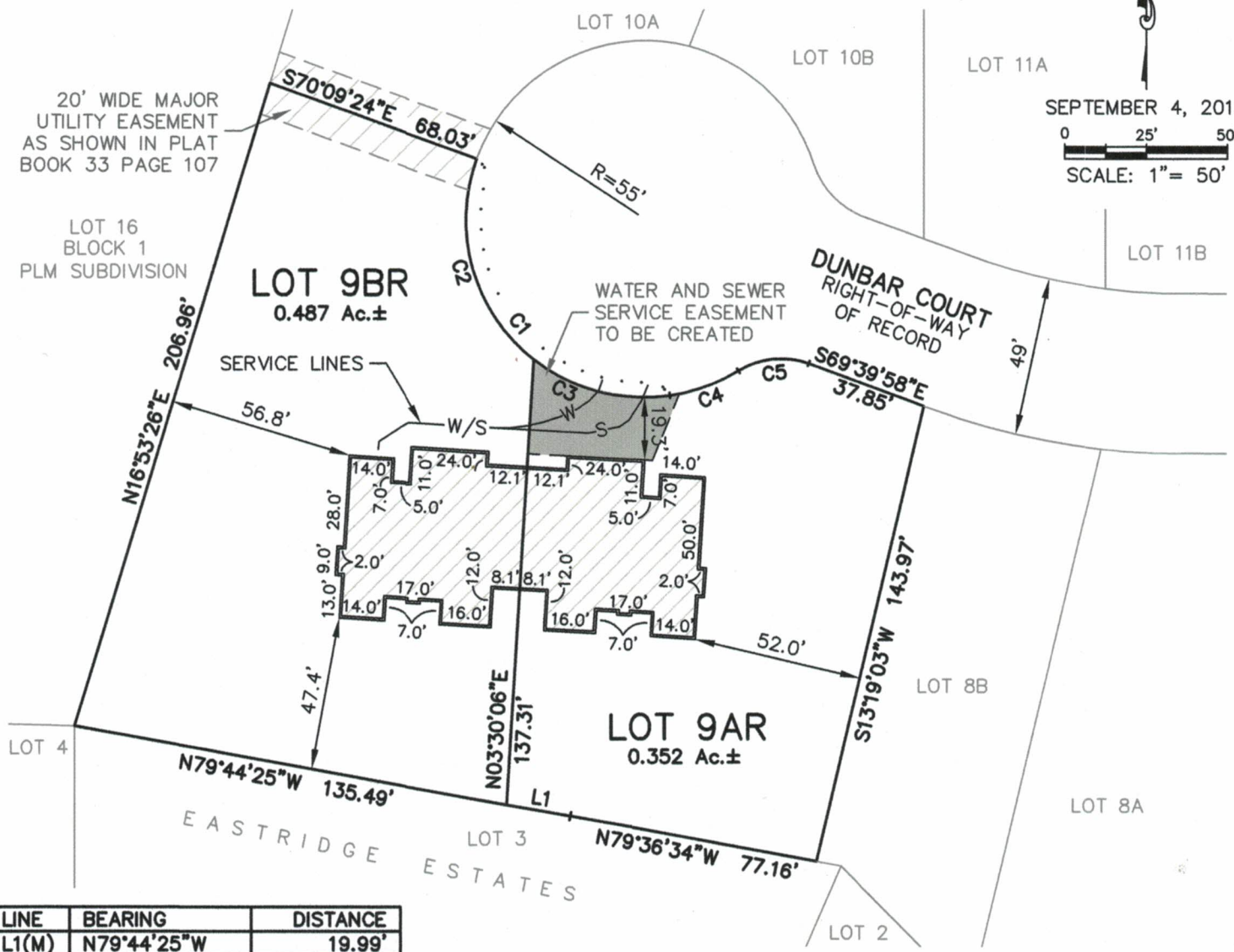


STRUCTURAL EXHIBIT LOT 9AR, LOT 9BR, BLOCK 1, PLM SUBDIVISION

LOCATED IN NE1/4 OF NW1/4,
SECTION 24, T1N, R7E, BHM
RAPID CITY, PENNINGTON COUNTY, SOUTH DAKOTA



SEPTEMBER 4, 2015
0 25' 50'
SCALE: 1" = 50'



LINE	BEARING	DISTANCE
L1(M)	N79°44'25"W	19.99'

CURVE	ARC LENGTH	RADIUS	DELTA ANGLE	CHORD BEARING	CHORD LENGTH
C1(M)	113.53'	55.00'	118°16'12"	S39°05'45"E	94.42'
C2(M)	68.88'	55.00'	71°45'12"	S15°50'15"E	64.47'
C3(M)	44.65'	55.00'	46°31'00"	S74°58'21"E	43.44'
C4(M)	22.67'	55.00'	23°36'41"	N69°59'10"E	22.51'
C5(M)	22.63'	25.00'	51°51'24"	N84°02'06"E	21.86'

NOTES:
UTILITY AND MINOR DRAINAGE EASEMENTS: 8' wide on the interior side of all lot lines, except where major drainage easements exist and except along each side of the common lot line between townhouse units.

Exterior maintenance easements reserved 6 feet wide along each side of the common lot line between the townhouse units.

RENNER ASSOCIATES, LLC
CIVIL ENGINEERING · LAND SURVEYING

616 SIXTH STREET PH: 605. 721-7310
RAPID CITY, SD 57701 FX: 605. 721-7313
RENNERASSOC.COM

REGISTERED PROFESSIONAL LAND SURVEYOR
REG. NO. 9213
ERIC D. HOWARD
SOUTH DAKOTA
★ 9-4-15