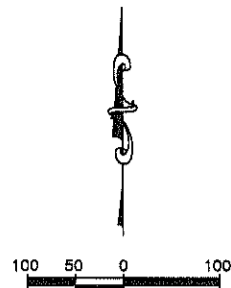


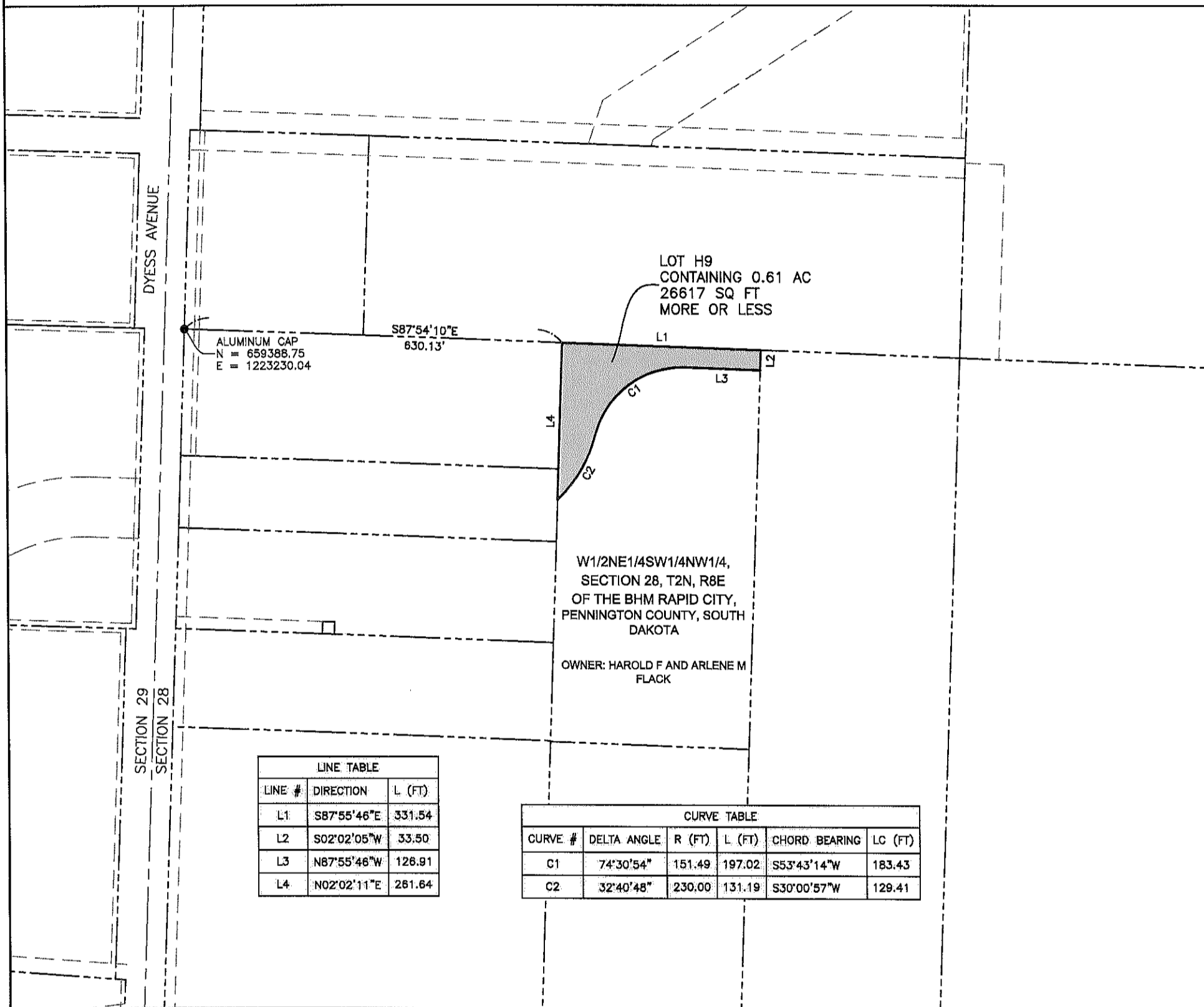
PLAT OF LOT H9

SHOWING A PARCEL OF LAND TO BE ACQUIRED FOR DRAINAGE PURPOSES ON
 THE W1/2NE1/4SW1/4NW1/4 OF
 SECTION 28, T2N, R8E OF THE BHM
 FOR CONSTRUCTION OF RAPID CITY PROJECT NO. 12-2032 CIP # 50934

RAPID CITY, PENNINGTON COUNTY, SOUTH DAKOTA



- LEGEND**
- FOUND SURVEY MONUMENT
 - ROW PLATTED THIS PLAT



LINE TABLE		
LINE #	DIRECTION	L (FT)
L1	S87°55'46"E	331.54
L2	S02°02'05"W	33.50
L3	N87°55'46"W	126.91
L4	N02°02'11"E	261.64

CURVE TABLE					
CURVE #	DELTA ANGLE	R (FT)	L (FT)	CHORD BEARING	LC (FT)
C1	74°30'54"	151.49	197.02	S53°43'14"W	183.43
C2	32°40'48"	230.00	131.19	S30°00'57"W	129.41

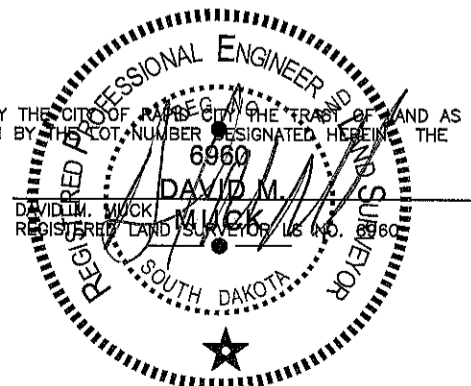
NOTE:
 THE COORDINATES, DISTANCES, AND AREAS SHOWN ON
 THIS PLAT ARE BASED ON THE SOUTH DAKOTA STATE
 PLANE COORDINATE SYSTEM SOUTH ZONE NAD83(96)
 SF=0.9997867

DRAWN BY BRAD HIGBEE DATE 10-24-14
 CHECKED BY DAVE MUCK DATE 10-24-14

SURVEYOR'S CERTIFICATE

I, DAVID M. MUCK, REGISTERED LAND SURVEYOR, NO. 6960 IN AND FOR THE STATE OF SOUTH DAKOTA, DO HEREBY CERTIFY THAT AS ORDERED BY THE CITY OF RAPID CITY THE TRACT OF LAND AS SHOWN ON THIS PLAT HAS BEEN SURVEYED AT MY DIRECTION AND UNDER MY CONTROL, AND SUCH TRACT OF LAND SHALL BE HEREAFTER KNOWN BY THE LOT NUMBER DESIGNATED HEREIN. THE LOCATION AND DIMENSIONS OF THE TRACT ARE SHOWN ON THIS PLAT.

IN WITNESS WHEREOF, I HAVE SET MY HAND AND SEAL THIS 27th DAY OF OCTOBER A.D., 20 14



OFFICE OF REGISTER OF DEEDS

STATE OF SOUTH DAKOTA
 COUNTY OF PENNINGTON : SS

FILED FOR RECORD THIS _____ DAY OF _____ A.D., 20_____, AT _____ .M. DOCUMENT NUMBER _____

REGISTER OF DEEDS _____ BY _____ DEPUTY