

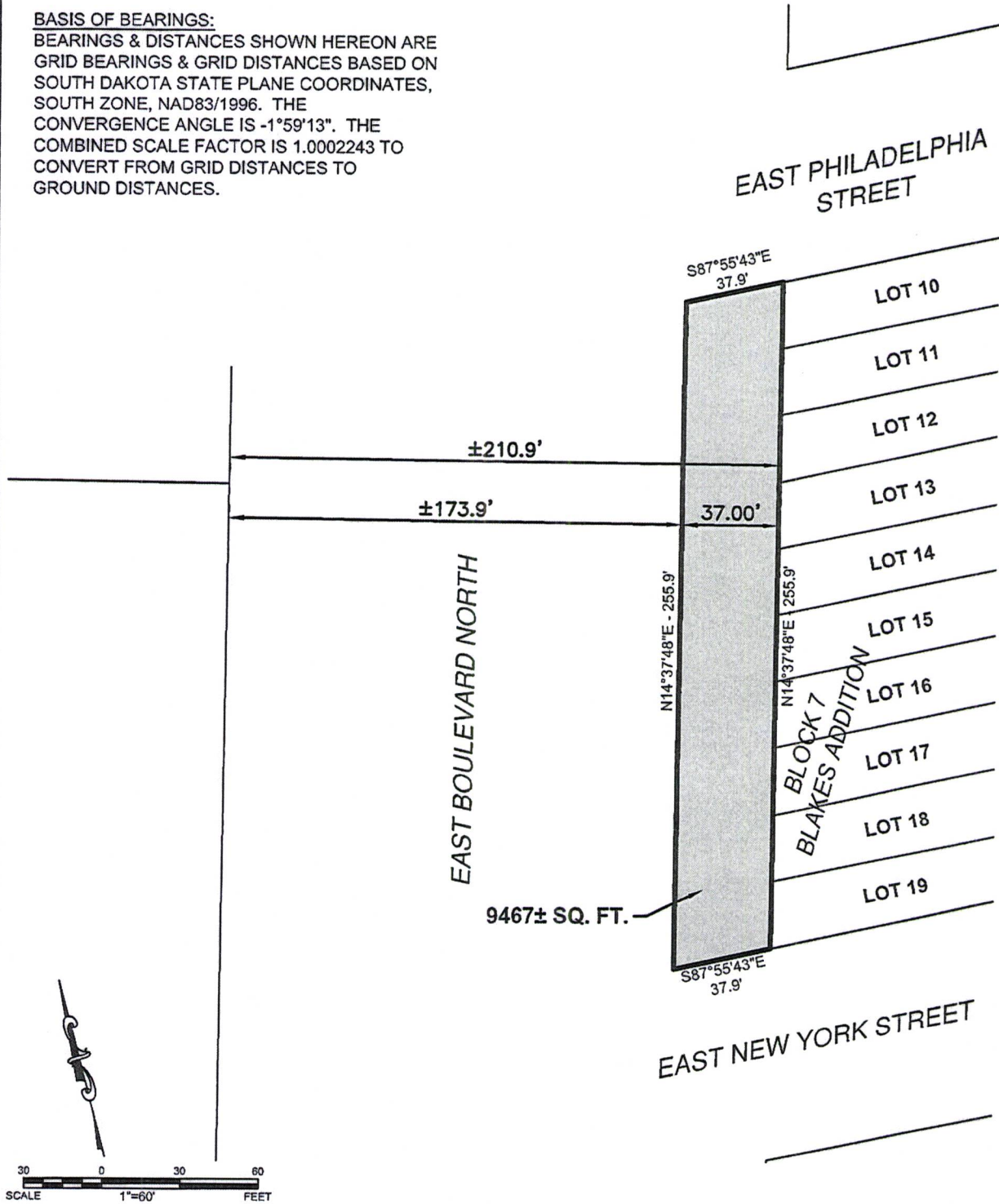
EXHIBIT A

VACATION OF RIGHT-OF-WAY

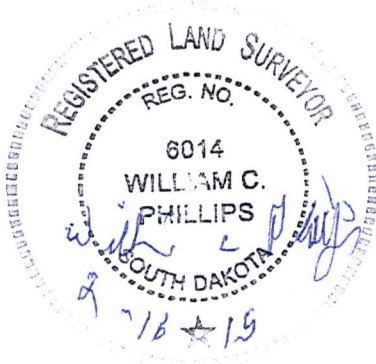
THAT PORTION OF THE EASTERLY 37.00 FEET OF EAST BOULEVARD NORTH RIGHT-OF-WAY
ABUTTING LOTS 10 - 19, BLOCK 7, BLAKES ADDITION LOCATED IN THE SE1/4 OF
SECTION 36, TOWNSHIP 2 NORTH, RANGE 7 EAST OF THE BLACK HILLS MERIDIAN
RAPID CITY, PENNINGTON COUNTY, SOUTH DAKOTA

BASIS OF BEARINGS:

BEARINGS & DISTANCES SHOWN HEREON ARE
GRID BEARINGS & GRID DISTANCES BASED ON
SOUTH DAKOTA STATE PLANE COORDINATES,
SOUTH ZONE, NAD83/1996. THE
CONVERGENCE ANGLE IS -1°59'13". THE
COMBINED SCALE FACTOR IS 1.0002243 TO
CONVERT FROM GRID DISTANCES TO
GROUND DISTANCES.



I, WILLIAM C. PHILLIPS, PROFESSIONAL LAND SURVEYOR, S.D. NO. 6014, DO
HEREBY CERTIFY THAT THE EASEMENT LOCATION SHOWN HEREON WAS MADE BY
ME, OR UNDER MY DIRECTION, FROM NOTES MADE IN THE FIELD AND RECORD
DOCUMENTS, THE SAME IS TRUE AND CORRECT TO THE BEST OF MY KNOWLEDGE
AND BELIEF.



(R) RECORD DIMENSION PER PLAT
BOOK STEEL FILE (BLAKES
ADDITION).



RIGHT-OF-WAY TO BE VACATED

PREPARED BY:
KLJ
330 KNOLLWOOD DRIVE
RAPID CITY, SD 57701-6611
(605) 721-5553



RECEIVED

JUN 09 2015

Rapid City Community Planning
& Development Services