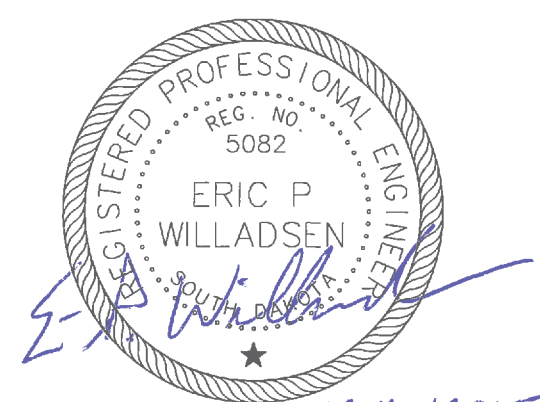
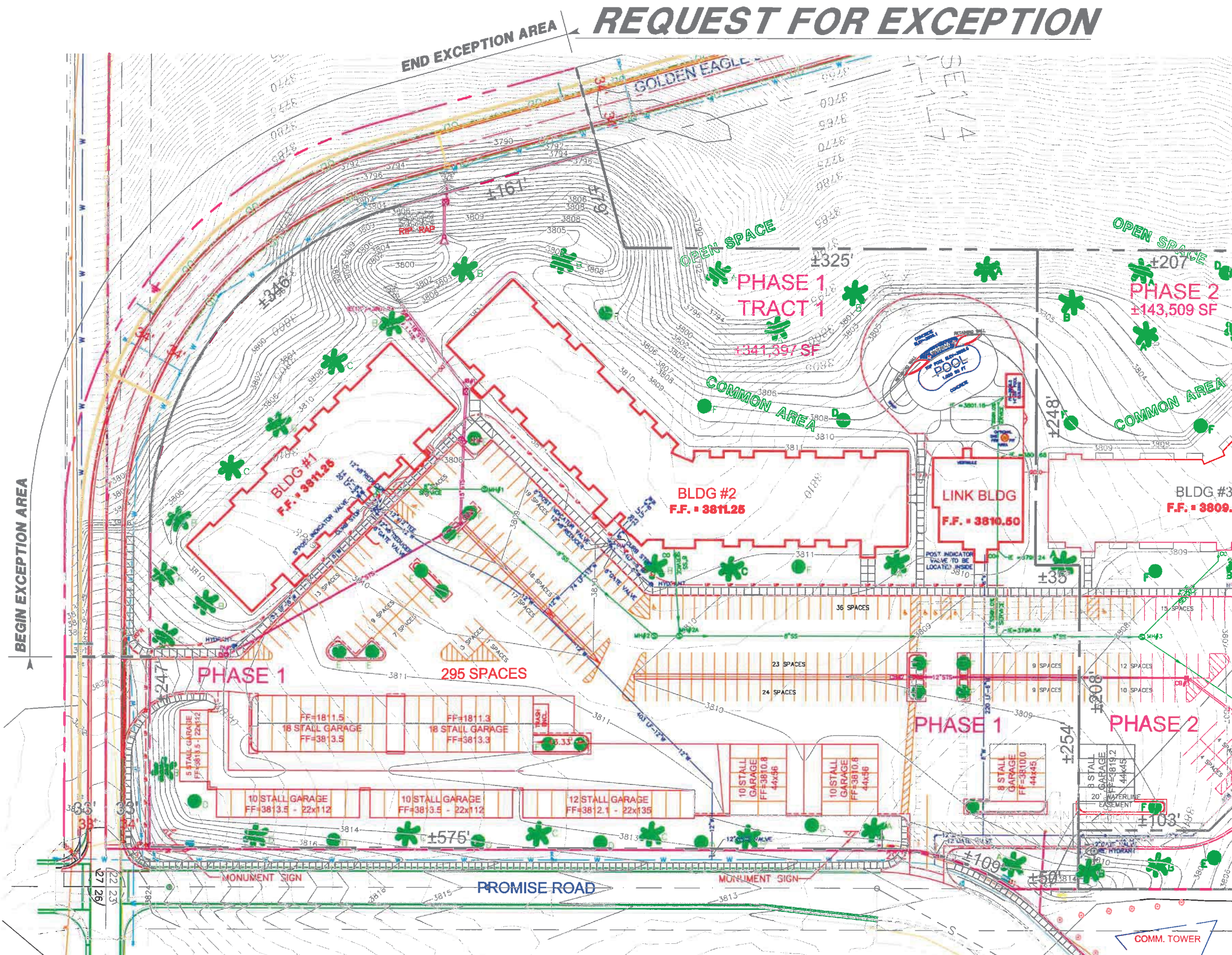
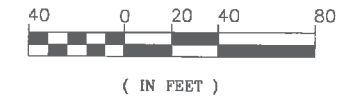


# REQUEST FOR EXCEPTION



I, ERIC P. WILLADSEN, P.E., HEREBY ACKNOWLEDGE THAT THESE PLANS WERE PREPARED BY ME OR UNDER MY DIRECT SUPERVISION AND THAT I AM A DULY REGISTERED PROFESSIONAL ENGINEER UNDER THE LAWS OF THE STATE OF SOUTH DAKOTA.  
eric.wl@midconetwork.com

REVISIONS:	DATE:

**WILLADSEN LUND ENGINEERING**  
 902 SOUTH CLEVELAND AVENUE  
 SIOUX FALLS, SOUTH DAKOTA 57103  
 www.willadsenlund.com  
 (605) 338-6950

OWNER: **COPPER RIDGE, LLC**

**COPPER RIDGE  
 PLANNED DEVELOPMENT**

PROJECT No.:	2011-069	SHEET
DRAWN BY:	TWL	1
APPROVED BY:	EPW	
DATE:	MAY 2015	