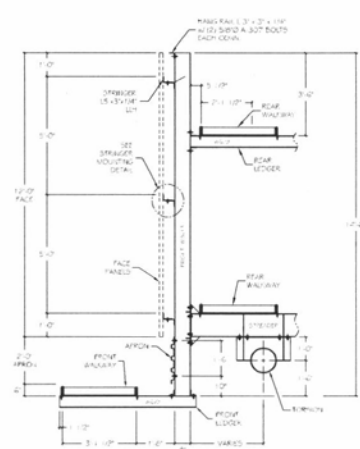
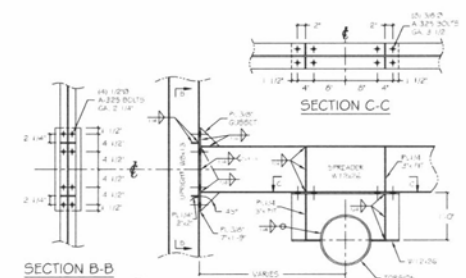


PLAN VIEW



TYPICAL SECTION THRU SIGN



SECTION B-B

UPRIGHT-SPREADER-TORSION CONNECTION

RECEIVED

FEB 20 2015

RAPID CITY COMMUNITY PLANNING & DEVELOPMENT SERVICES

NOTES AND SPECIFICATIONS
 (APPLY UNLESS OTHERWISE NOTED ON PERMIT DRAWING)

CODE - 2012 IBC

WIND DESIGN - SIGN STRUCTURE WIND LOADS ARE DETERMINED IN ACCORDANCE WITH ASCE 7-05 SECTION 6.5.14.
 BASIC WIND SPEED: 105 MPH (3 SECOND GUST)
 RISK CATEGORY: I
 EXPOSURE: C
 DESIGN WIND PRESSURE: 23.0 PSF

ALL SIGN COMPONENTS NOT SPECIFICALLY DETAILED ON THESE DRAWINGS BUT ATTACHED TO THE STRUCTURE SHALL BE DESIGNED IN ACCORDANCE WITH THE INFORMATION ABOVE.

DESIGN LIVE LOAD - (FRONT AND REAR MAINTENANCE PLATFORM) 60 PSF OR 300 LBS. CONCENTRATED LOAD.

DESIGN DEAD LOAD - (SIGN FACES) - 2.5 PSF.

STEEL - WIDE FLANGES - ASTM A992, OTHER SHAPES & PLATES - ASTM A36.

ALL STRUCTURAL STEEL SHALL BE FABRICATED AND ERECTED ACCORDING TO LATEST AISC SPECIFICATIONS AND STANDARD PRACTICE.

PAINTING - ALL STRUCTURAL STEEL, EXPOSED TO WEATHER, SHALL BE SHOP PRIMED AND PAINTED IN ACCORDANCE WITH AISC 305 (SPECIFICATION) AND AISC 303 (STANDARD PRACTICE).

CONCRETE - CONCRETE SHALL HAVE A MINIMUM COMPRESSIVE STRENGTH OF 3000 PSI AT 28 DAYS AS DESIGNED AT 2500 PSI. CONCRETE SHALL BE PLACED IN ACCORDANCE WITH ACI 318 WITH A MAXIMUM SLUMP OF 5".

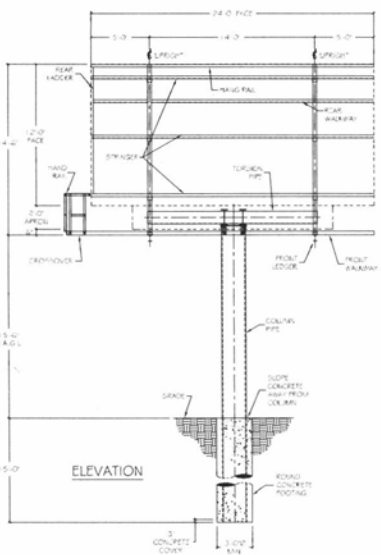
WELDING - ALL WELDING MATERIALS AND COMPONENTS SHALL BE IN COMPLIANCE WITH AISC D1.1. NO FIELD WELDING IS ALLOWED UNLESS SPECIFICALLY DENOTED AS FIELD WELD.

BOLTS - BOLT SIZE AND TYPE SHALL BE AS INDICATED ON DRAWING AND DETAILS. ALL BOLTS SHALL BE INSTALLED TO A SNUG TIGHT CONDITION UNLESS NOTED TO BE PRE-TENSIONED (PT). PT BOLTS SHALL BE FULLY TENSIONED PER AISC TURN OF THE NUT METHOD (1/3 OF A TURN PAST A SNUG TIGHT CONDITION) OR OTHER AISC APPROVED TENSIONING METHOD.

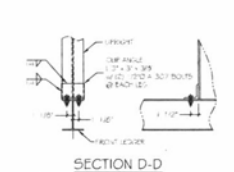
COLUMN FOOTING - EMBEDMENT DEPTH FOR FOOTING DOES NOT APPLY TO LOCATIONS WHERE WALLS OF THE HOLE WILL NOT STAND WITHOUT SUPPLEMENTAL SUPPORT, OR WHERE UNCOMPACTED FILL OR ORGANIC FILL EXISTS. FOUNDATION BE DESIGNED USING LATERAL BEARING PER BCS SECTION 1907.3.2.1. DESIGN LATERAL SOIL PRESSURE PER BCS TABLE 1906.2 IS 150 PSF/FT SOIL CLASS 4 - TYPE SAND (SILTY SAND). ALLOWABLE LATERAL SOIL PRESSURE HAS BEEN MULTIPLIED BY 2 PER SECTION 1906.1.4. VERIFY SOIL TYPE DURING EXCAVATION, NOTIFY ENGINEER OF ANY DISCREPANCY.

STEEL FABRICATOR - ALL STRUCTURAL STEEL SHALL BE SHOP FABRICATED BY THE FOLLOWING APPROVED FABRICATOR:
 PAGE STEEL
 2040 INDUSTRIAL DRIVE
 PAGE, ARIZONA 85046

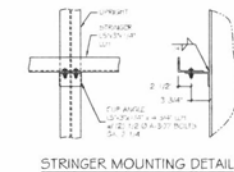
THE ERECTOR SHALL VERIFY ALL DIMENSIONS AND CONDITIONS IN THE FIELD BEFORE ERECTION AND NOTIFY ENGINEER OF ANY DISCREPANCIES.



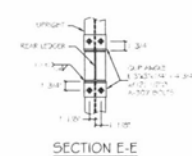
ELEVATION



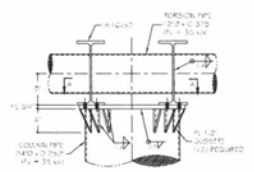
SECTION D-D



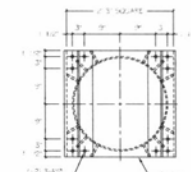
STRINGER MOUNTING DETAIL



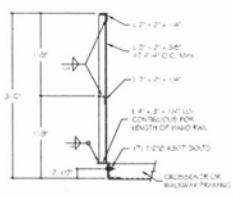
SECTION E-E



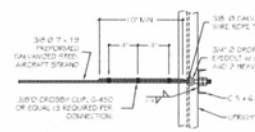
COLUMN-TORSION CONNECTION



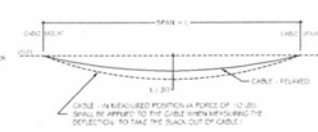
SECTION A-A



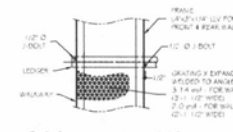
TYPICAL HAND RAIL CONNECTION



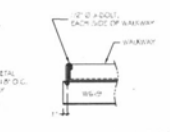
SAFETY CABLE MOUNTING



SAFETY CABLE TENSION



TYPICAL WALKWAY DETAIL



WALKWAY MOUNTING DETAIL

THIS PRINT IS THE PROPERTY OF RMG OUTDOOR INC. PROFESSIONAL SEAL VALID ONLY WHEN FABRICATED BY THE ABOVE. IT IS LOANED FOR PERMIT PURPOSES ONLY. ANY OTHER USE OR REPRODUCTION IS PROHIBITED WITHOUT WRITTEN APPROVAL FROM RMG OUTDOOR INC.		
CUSTOMER EPIC OUTDOOR		
SIGN LOCATION RAPID CITY, SD		
12' x 24' SINGLE POST CENTER MOUNT DOUBLE FACE 15 V-BUILD		
ENG. NO. J5W	DR. J5W	CH. J5W
SEC. NO. DATE 02/18/15		
JOB NO. SHEET NO. E1 of 1		
RMG Outdoor Inc. 4425 North 24th Street, Suite 200 Phoenix, Arizona 85016 Phn: (602) 230-9634 Fax: (602) 230-9071		

PRELIMINARY DRAWING
 NOT FOR CONSTRUCTION