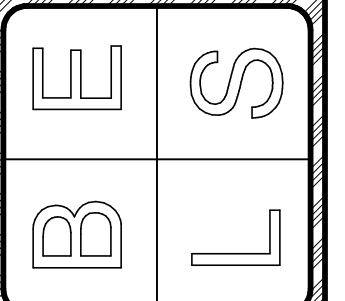


SCALE: 1" = 20'  
 1" CONTOUR INTERVAL  
 NOVEMBER 12, 2014  
 REVISED MARCH 9, 2015  
 RETAINING WALL & LANDSPACING  
 PER OWNER REQUEST

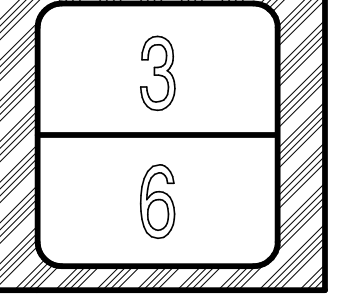
BRITTON ENGINEERING &  
 LAND SURVEYING, INC  
 8035 BLACK HAWK ROAD, SUITE 5,  
 PO BOX 649 BLACK HAWK, SD 57718  
 PH. (605) 716-7988



LOT 7 OF CABELL SQUARE ADDITION  
 LOCATED IN THE NW 1/4 OF THE NW 1/4  
 SECTION 5, T1N, R8E, BHM, RAPID CITY  
 PENNINGTON COUNTY, SOUTH DAKOTA

SITE PLAN  
 530 CABELL STREET  
 WYNGARD INVESTMENTS, LLC

Project No: 14-01188  
 Survey By: SOT  
 Drawn By: CAS  
 Designed By: SOT  
 Checked By: SOT  
 Date: 5/27/14



- LEGEND**
- CONSTRUCT 8,242 SF OF REINFORCED CONCRETE PAVEMENT AS PER GEOTECHNICAL REPORT FOR APPROACHES & DELIVERY LANES
  - CONSTRUCT 8,210 SF OF ASPHALT PAVEMENT AS PER GEOTECHNICAL REPORT FOR LIGHT DUTY PARKING AREAS
  - CONSTRUCT 24,380 SF OF ASPHALT PAVEMENT AS PER GEOTECHNICAL REPORT FOR MEDIUM DUTY DRIVING LANES

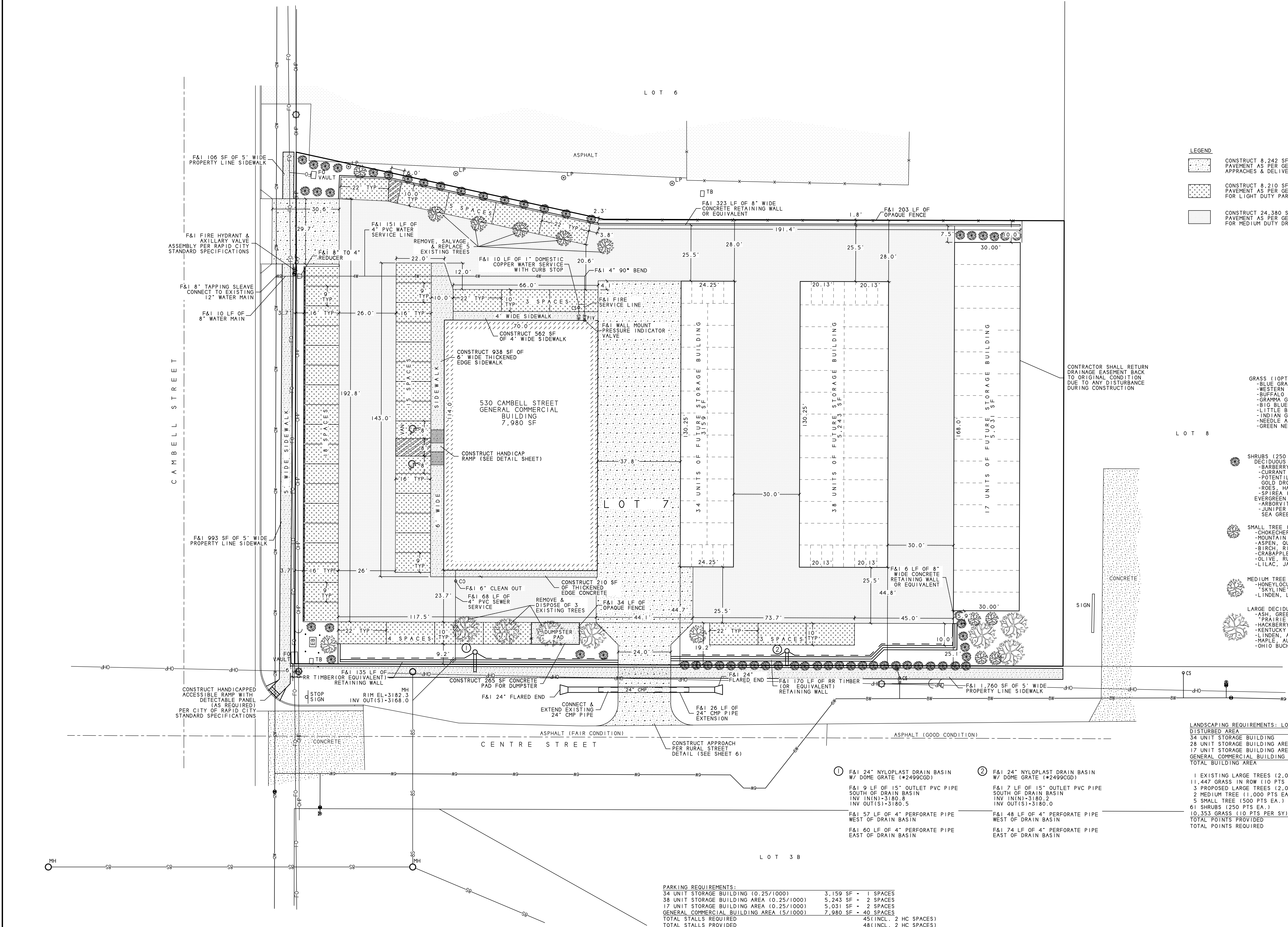
- GRASS (10PTS PER SY)
- BLUE GRASS
  - WESTERN WHEAT SPECIES
  - BUFFALO GRASS
  - GRAMMA GRASS
  - BIG BLUE STEM
  - LITTLE BLUE STEM
  - INDIAN GRASS
  - NEEDLE AND THREAD
  - GREEN NEEDLE
- SHRUBS (250 PTS EACH)
- DECIDUOUS CHOICES:
- BARBERRY (GOLDEN, ROSE GLOW)
  - CURRANT (ALPINE)
  - POTENTILLA (CORINATION TRIUMPH, GOLD DROP, GOLDFINGER)
  - ROSE, HARDY SHRUB
  - SPIREA (GOLDBUND)
- EVERGREEN CHOICES:
- ARBOVITAE, GLOBE (HETZ MIDGET)
  - JUNIPER (MINT JULEP, COMPACT PFITZER, SEA GREEN, SAVIN)
- SMALL TREE (500 PTS EACH)
- CHOKECHERRY, AMUR
  - MOUNTAIN ASH, SHOWY
  - ASPEN, QUAKING
  - BIRCH, RIVER
  - CRABAPPLE, SPRING SNOW
  - OLIVE, RUSSIAN
  - LILAC, JAPANESE TREE
- MEDIUM TREE (1000 PTS EACH)
- HONEYLOCUST, IMPERIAL
  - SKYL INE, SHADEMASTER
  - LINDEN, LITTLE LEAF, GREENSPIRE
- LARGE DECIDUOUS TREE (2000 PTS EACH)
- ASH, GREEN PATMORE, KINDRED
  - PRAIRIE SPIRE
  - HACKBERRY
  - KENTUCKY COFFEE TREE
  - LINDEN, AMERICAN SENTRY
  - MAPLE, AUTUMN BLAZE
  - OHIO BUCHEYE

LANDSCAPING REQUIREMENTS: LOT 7 OF CABELL SQUARE

DISTURBED AREA	73,170 SF
34 UNIT STORAGE BUILDING	3,159 SF
28 UNIT STORAGE BUILDING AREA	5,243 SF
17 UNIT STORAGE BUILDING AREA	5,031 SF
GENERAL COMMERCIAL BUILDING AREA	7,980 SF
TOTAL BUILDING AREA	21,413 SF

1 EXISTING LARGE TREES (2,000 PTS EA.)	2,000
11,447 GRASS IN ROW (10 PTS PER SY)	12,719
3 PROPOSED LARGE TREES (2,000 PTS EA.)	6,000
2 MEDIUM TREE (1,000 PTS EA.)	2,000
5 SMALL TREE (500 PTS EA.)	2,500
61 SHRUBS (250 PTS EA.)	15,250
10,353 GRASS (10 PTS PER SY)	11,503
TOTAL POINTS PROVIDED	51,972
TOTAL POINTS REQUIRED	51,757

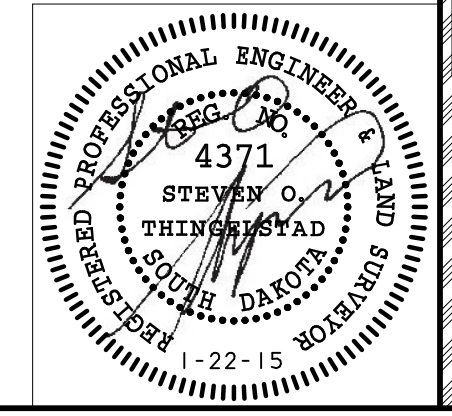


PARKING REQUIREMENTS:

34 UNIT STORAGE BUILDING (0.25/1000)	3,159 SF - 1 SPACES
38 UNIT STORAGE BUILDING AREA (0.25/1000)	5,243 SF - 2 SPACES
17 UNIT STORAGE BUILDING AREA (0.25/1000)	5,031 SF - 2 SPACES
GENERAL COMMERCIAL BUILDING AREA (5/1000)	7,980 SF - 40 SPACES
TOTAL STALLS REQUIRED	45 (INCL. 2 HC SPACES)
TOTAL STALLS PROVIDED	48 (INCL. 2 HC SPACES)

- ① F&I 24" NYLOPLAST DRAIN BASIN W/ DOME GRATE (#2499CGD)  
 F&I 9 LF OF 15" OUTLET PVC PIPE SOUTH OF DRAIN BASIN  
 INV IN(N)-3180.8  
 INV OUT(S)-3180.5
- ② F&I 24" NYLOPLAST DRAIN BASIN W/ DOME GRATE (#2499CGD)  
 F&I 7 LF OF 15" OUTLET PVC PIPE SOUTH OF DRAIN BASIN  
 INV IN(N)-3180.2  
 INV OUT(S)-3180.0
- F&I 57 LF OF 4" PERFORATE PIPE WEST OF DRAIN BASIN  
 F&I 60 LF OF 4" PERFORATE PIPE EAST OF DRAIN BASIN
- F&I 48 LF OF 4" PERFORATE PIPE WEST OF DRAIN BASIN  
 F&I 74 LF OF 4" PERFORATE PIPE EAST OF DRAIN BASIN

CONTRACTOR SHALL RETURN DRAINAGE EASEMENT BACK TO ORIGINAL CONDITION DUE TO ANY DISTURBANCE DURING CONSTRUCTION



BRITTON ENGINEERING &  
LAND SURVEYING, INC  
8035 BLACK HAWK ROAD, SUITE 5,  
PO BOX 649 BLACK HAWK, SD 57718  
PH. (605) 716-7988

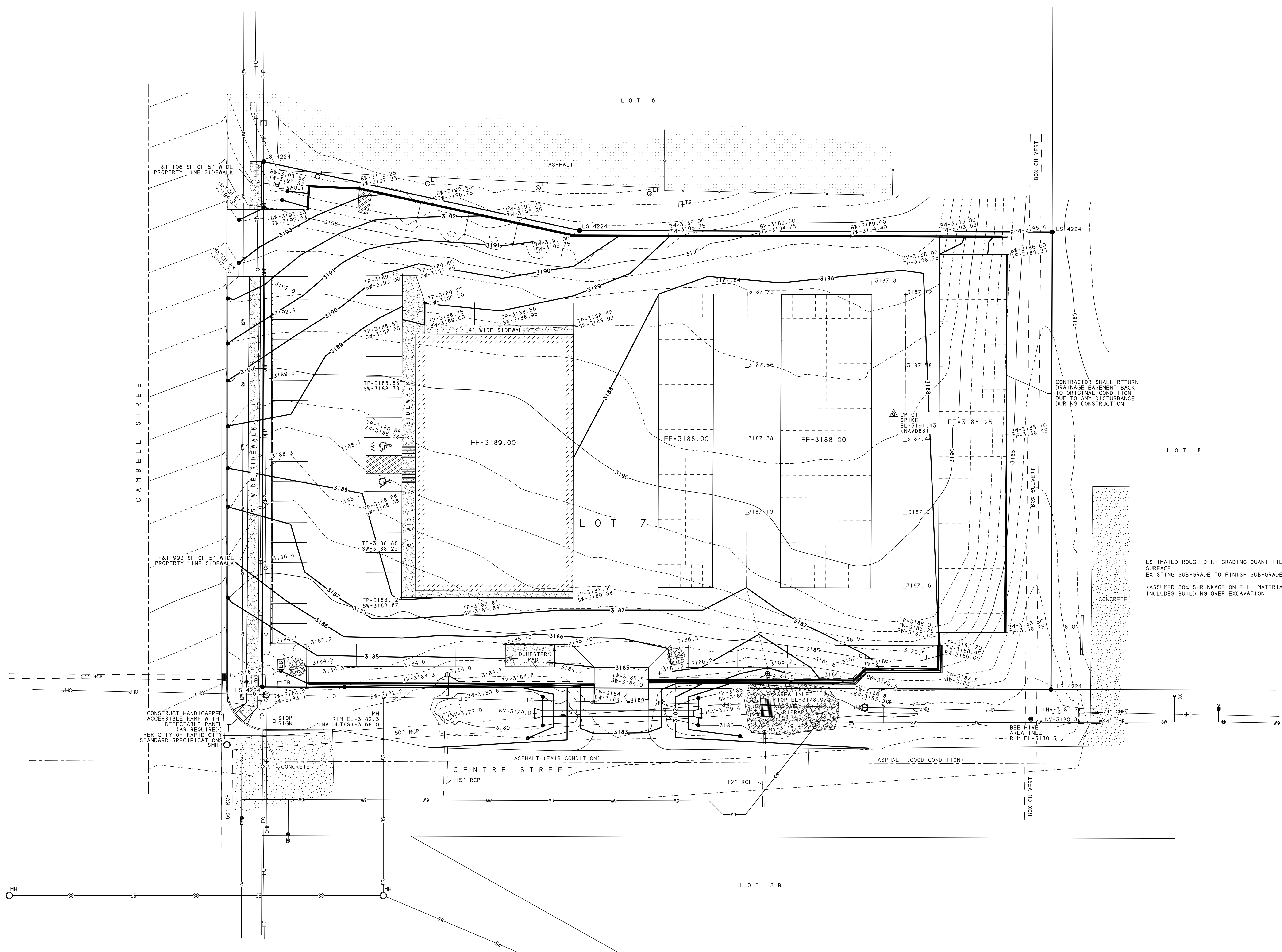
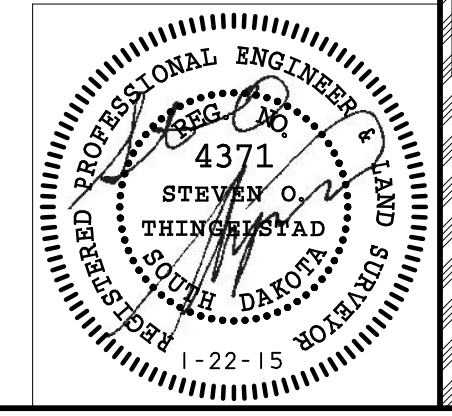
ELS  
BL

LOT 7 OF CABELL SQUARE ADDITION  
LOCATED IN THE NW 1/4 OF THE NW 1/4  
SECTION 5, T1N, R8E, BHM, RAPID CITY  
PENNINGTON COUNTY, SOUTH DAKOTA

GRADING PLAN  
530 CABELL STREET  
WYNGARD INVESTMENTS, LLC

Project No: 14-01188  
Survey By: SOT  
Drawn By: CAS  
Designed By: SOT  
Checked By: SOT  
Date: 5/27/14

4  
6



ESTIMATED ROUGH DIRT GRADING QUANTITIES

SURFACE	CUT (CY)	FILL (CY)
EXISTING SUB-GRADE TO FINISH SUB-GRADE	4.465	1.535

\*ASSUMED 30% SHRINKAGE ON FILL MATERIAL  
INCLUDES BUILDING OVER EXCAVATION