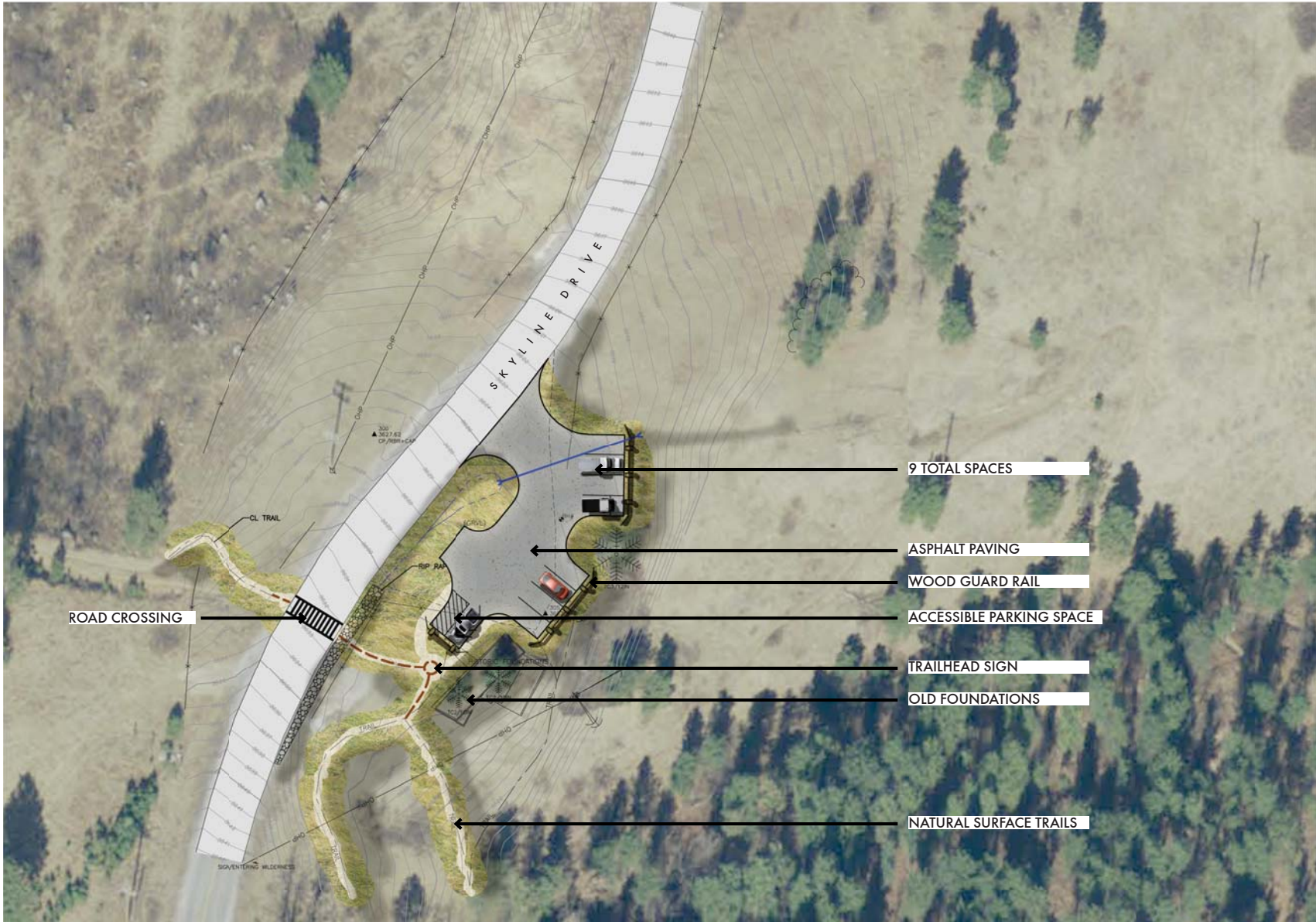


# PROJECT LOCATION MAP

NOT TO SCALE



ROAD CROSSING

CL TRAIL

RIP RAMP

SKYLINE DRIVE

9 TOTAL SPACES

ASPHALT PAVING

WOOD GUARD RAIL

ACCESSIBLE PARKING SPACE

TRAILHEAD SIGN

OLD FOUNDATIONS

NATURAL SURFACE TRAILS



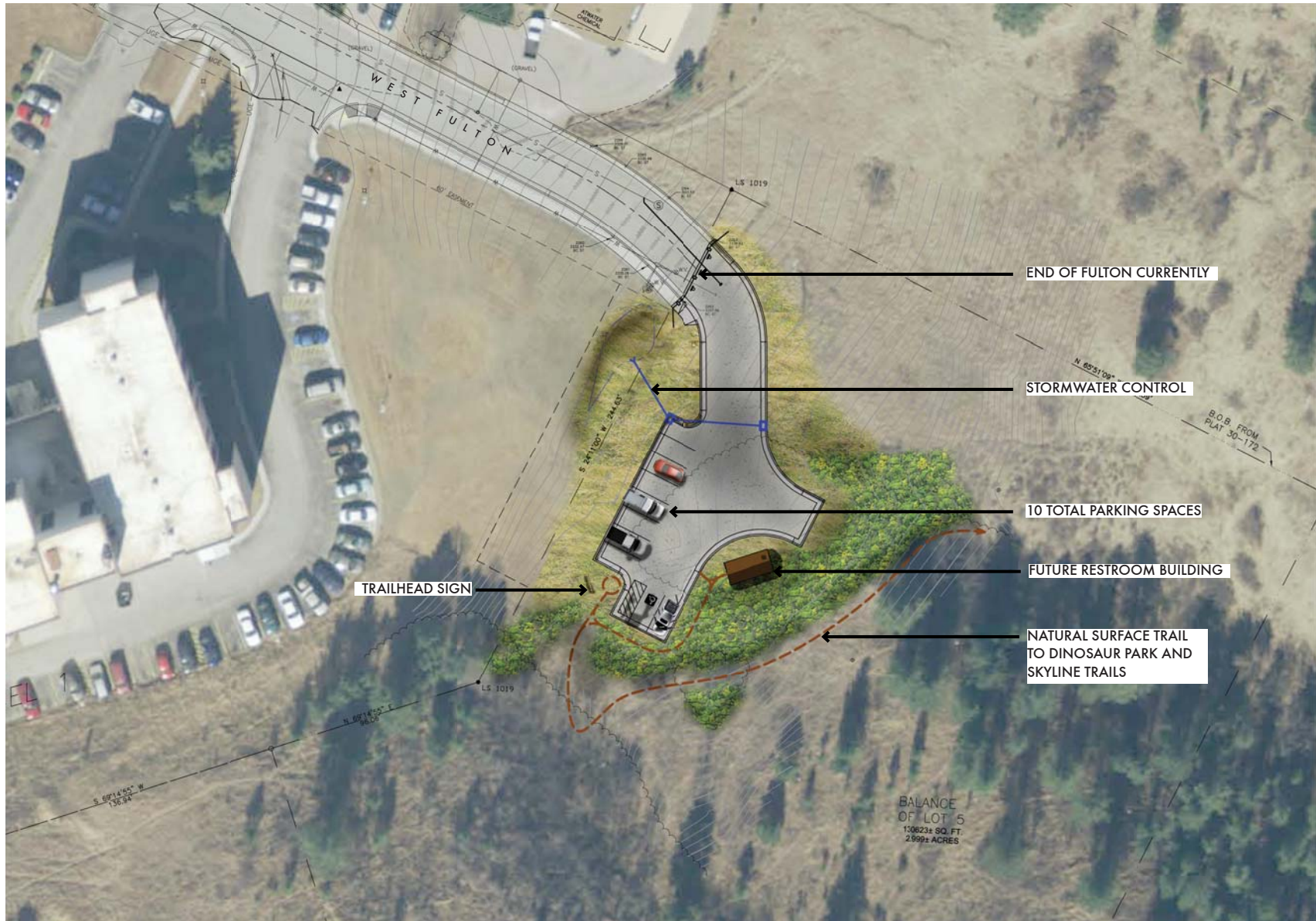
celtec



DATE: JANUARY 16, 2014

# PETRIFIED FOREST TRAILHEAD



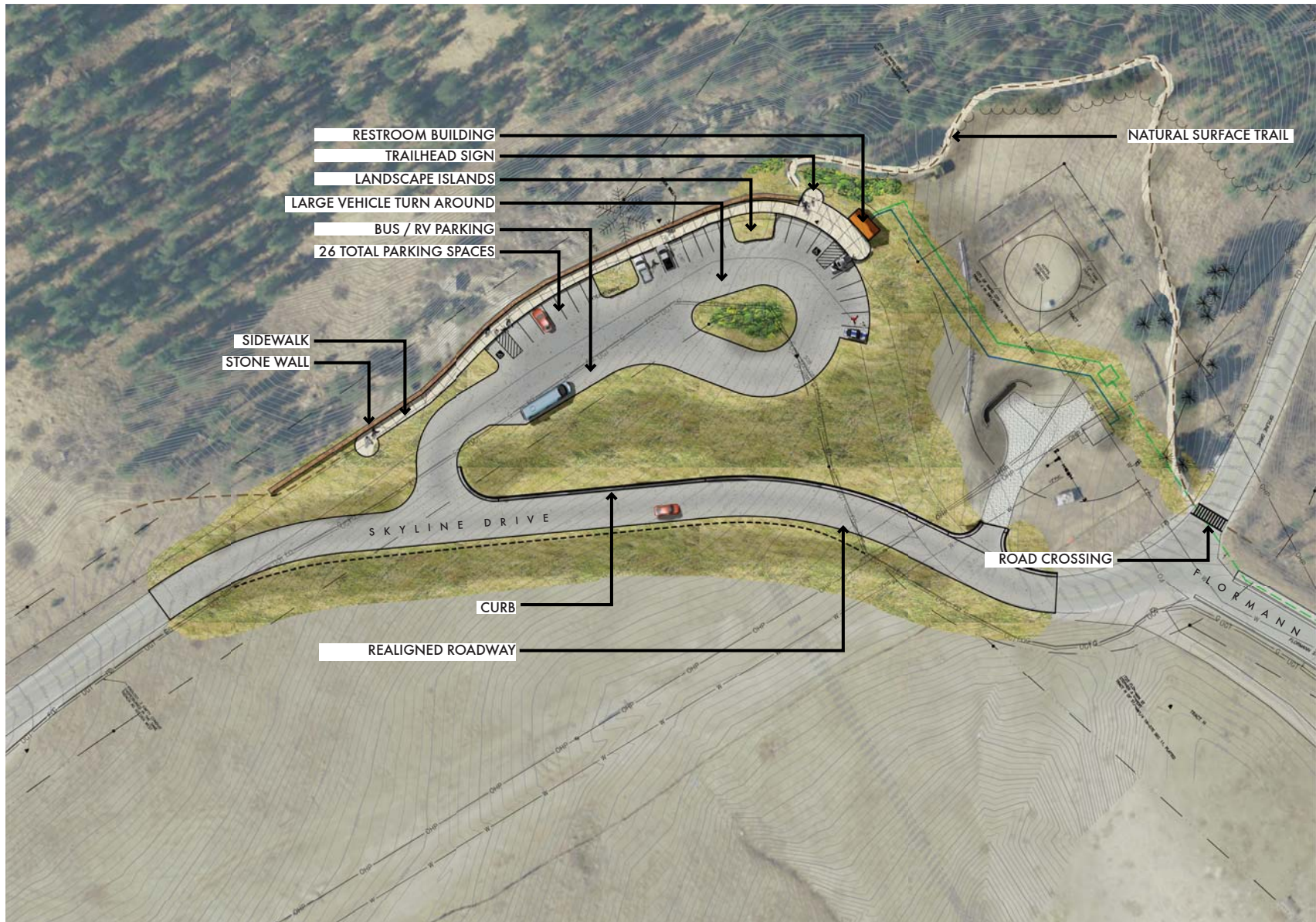


# WEST DINOSAUR (WEST FULTON) TRAILHEAD



DATE: FEBRUARY 10, 2014





- RESTROOM BUILDING
- TRAILHEAD SIGN
- LANDSCAPE ISLANDS
- LARGE VEHICLE TURN AROUND
- BUS / RV PARKING
- 26 TOTAL PARKING SPACES

SIDEWALK  
STONE WALL

NATURAL SURFACE TRAIL

ROAD CROSSING

SKYLINE DRIVE

CURB

REALIGNED ROADWAY

FLORMANN



DATE: JANUARY 16, 2014

# STONE WALL OVERLOOK TRAILHEAD