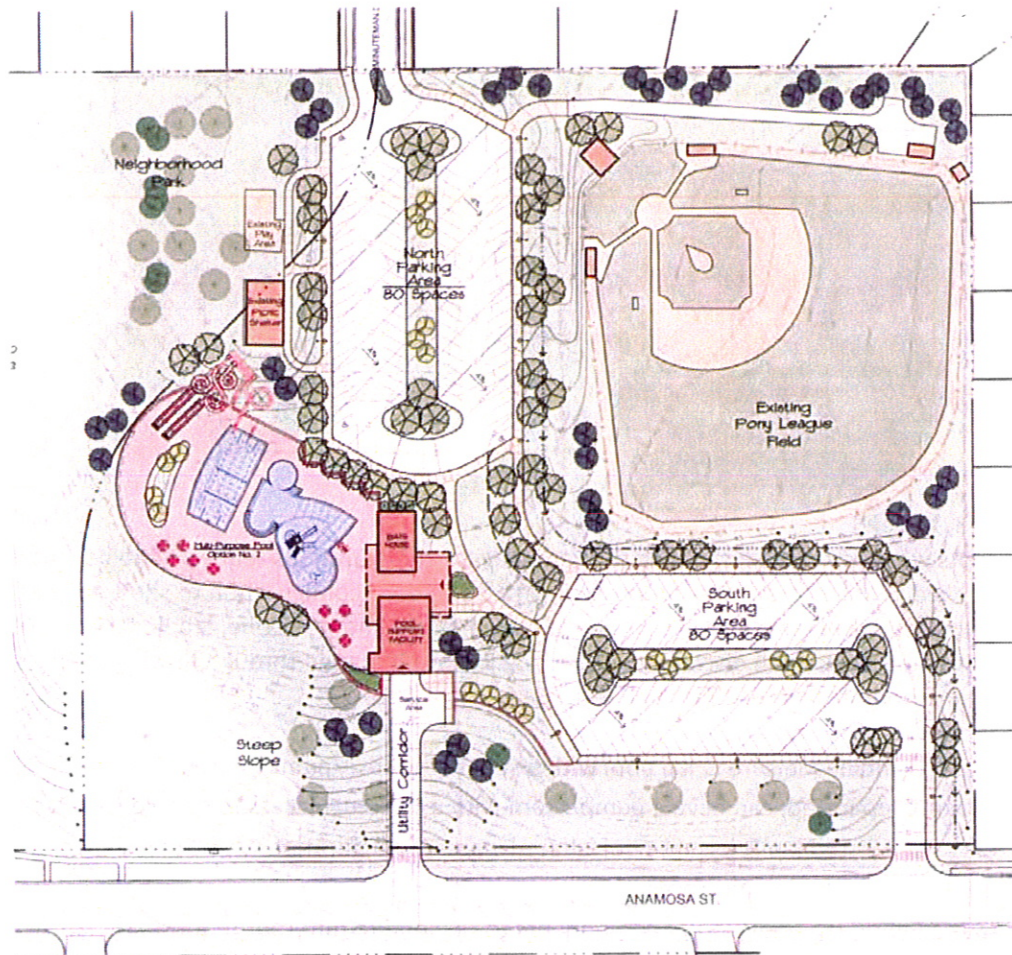




### Final Concepts

The Final Concepts presented are those that were viewed at the Open House. Each of the concepts represents a pool configuration, a site parking option, a bathhouse configuration and a pool enclosure configuration. There is potential to mix & match some of the elements to some level. The Bathhouse configurations were determined by the orientation of each pool to the site.



Site Concept A  
Multi Purpose Pool - Option No. 3a  
**Horace Mann Park**



### SITE CONCEPT A

This concept features a parking layout that keeps the current parking lot configurations and disconnects the through traffic. It features 4-lane lap pool disconnected from a zero-entry leisure pool. (3) water-slides utilize the existing playground hill for their start point; two are roll-out slides and one is a drop-slide. The bathhouse features a centered entry with a lower level pump-room.