



# City of Rapid City

---

Public Works Department

Street Division

2013 Annual Report





## **Mission Statement**

**To provide safe, clean & well maintained street, pedestrian and storm drainage systems for the convenience and safety of the public and to accomplish this in an efficient, safe, economical and environmentally conscientious manner.**

## **The 2013 Responsibilities of the Street Division Include, but are not Limited to the Following:**

- The repair and maintenance of all City streets and alley surfaces.
- To replace, construct or repair various concrete components of the streets, sidewalks and drainage systems. In addition, perform concrete work for other City departments.
- Provide winter maintenance of all City streets including plowing, sanding, chemical treatment, and removal of snow and ice.
- To clean all City streets and parking lots by sweeping or flushing as conditions dictate.
- The repair, cleaning, construction and maintenance of open and covered drainage channels, pipes and structures that control storm water runoff.
- Provide an accurate record system for equipment maintenance, scheduling and repair of the Public Work's and Police Department's fleet. Also track maintenance and repair costs of vehicles and equipment.
- To support all City departments, and other governmental agencies with equipment and personnel for special projects and in emergencies.
- Support with personnel and equipment those civic minded projects intended for the betterment of the community.
- To provide all services in a professional, efficient, & courteous manner.



## General Information

### 2013 Special Projects

- Placed barricades and provided street sweepers in the downtown area for numerous parades and functions throughout the year
- Set up the annual City auction
- Hauled various aggregates for the Landfill
- Provide help to the Landfill during peak periods
- Provided assistance in the form of gravel maintenance to the Fairgrounds
- Provided men and equipment for sweeping operations at various City facilities including the Civic Center, Landfill, Waste Water and Water Plants, Recreation Center, Cemeteries, & Fire Department stations
- Removed / Placed concrete and asphalt for various City departments
- Assisted SDDOT in cleaning of road culverts using the Vac-All service truck
- Continued to help the Parks Division with picnic table repair and maintenance
- Coordinated snow removal operations for various city divisions
- Responded to requests for everything from soup to nuts from City Hall, other divisions, and the general public.

### Drainage (City Crews)

- Cleaned numerous drainage ditches
- Clean storm sewer pipes and inlets throughout the City

## Equipment Maintenance (Main Street Department Shop)

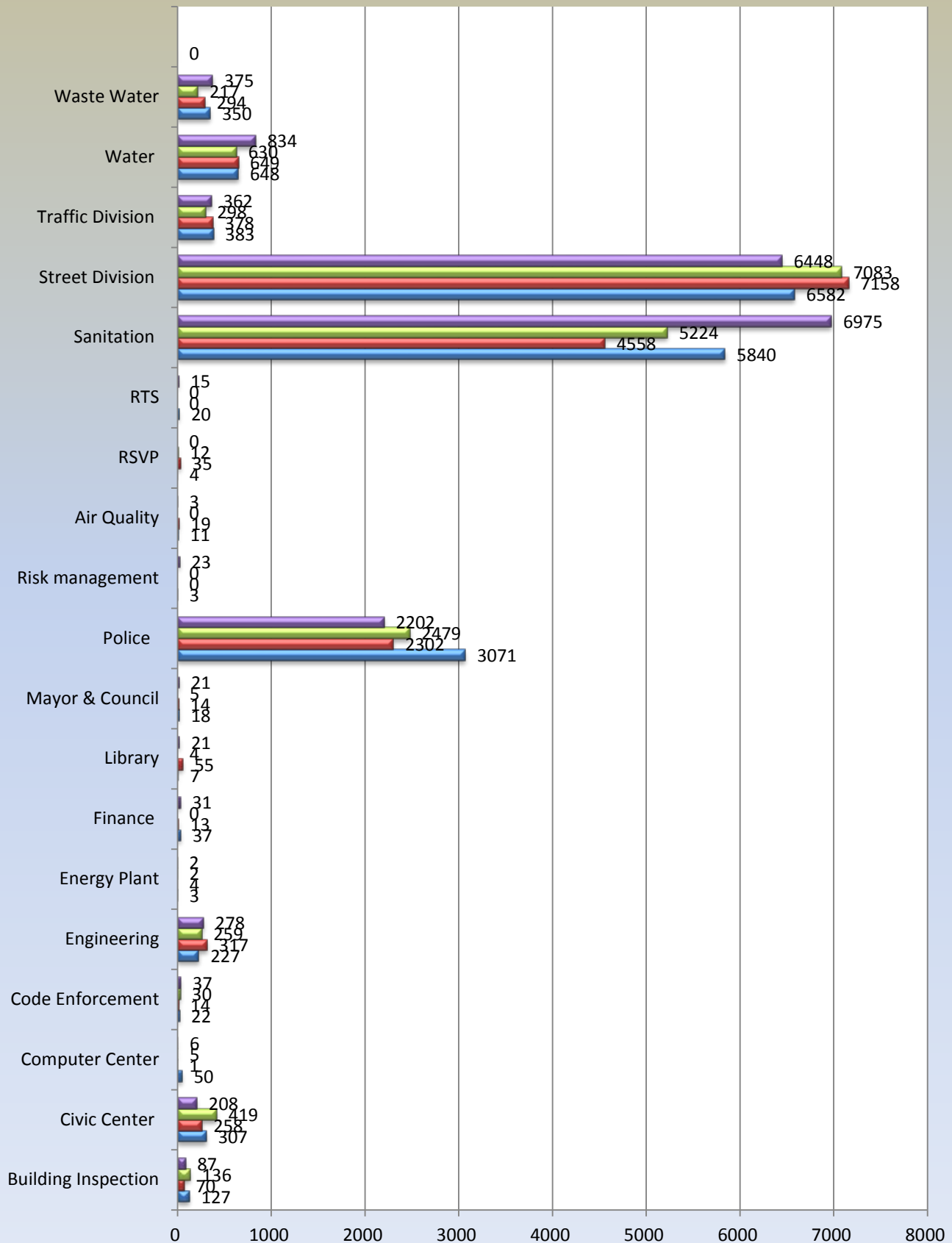
- Changed 3953 gallons of oil & lubricants on over 500 pieces of equipment. All the used oil is used to heat the shop during inclement weather
- Installed over 384 new tires and repaired countless others
- Performed custom steel fabrication projects for various City Departments



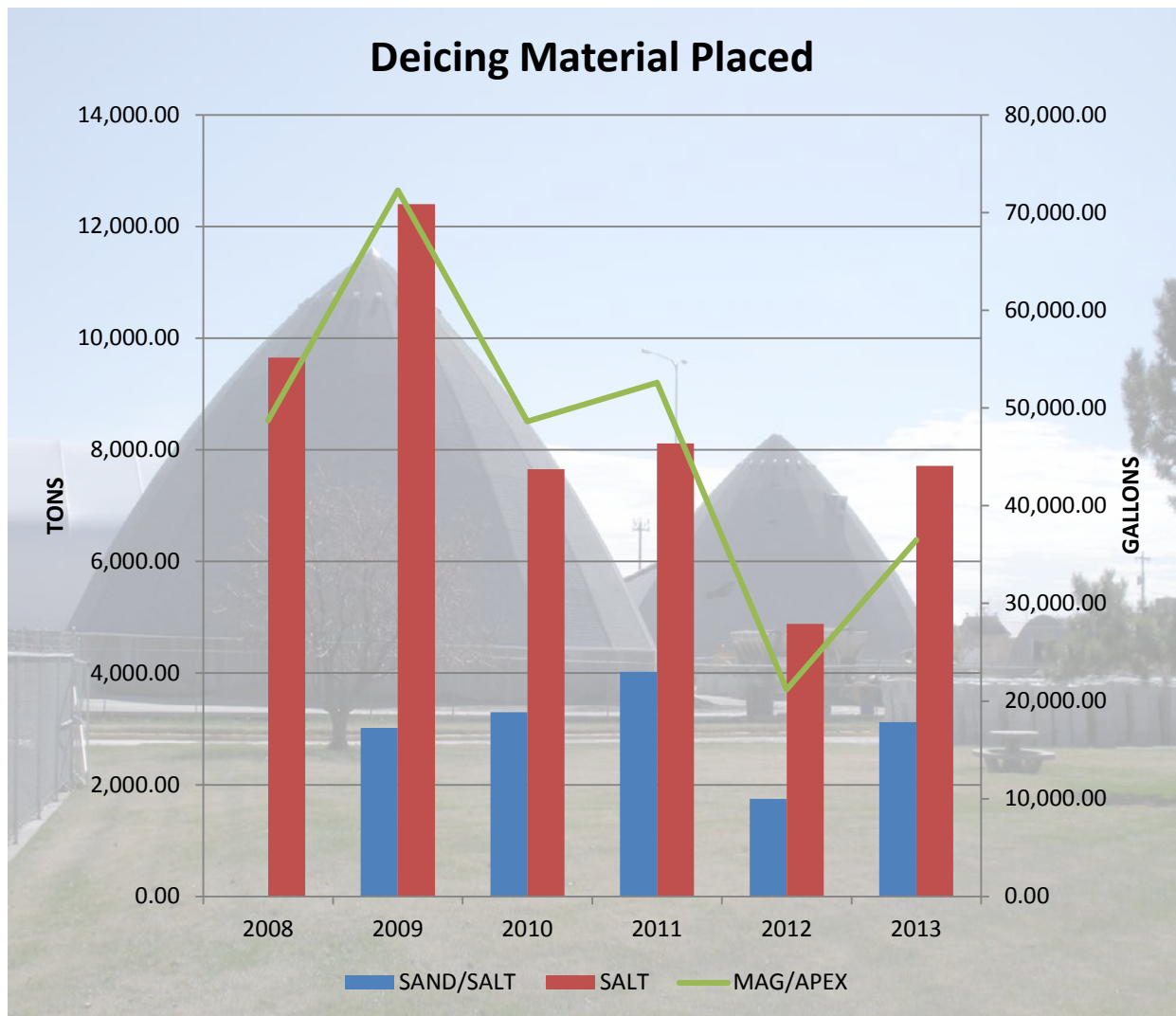


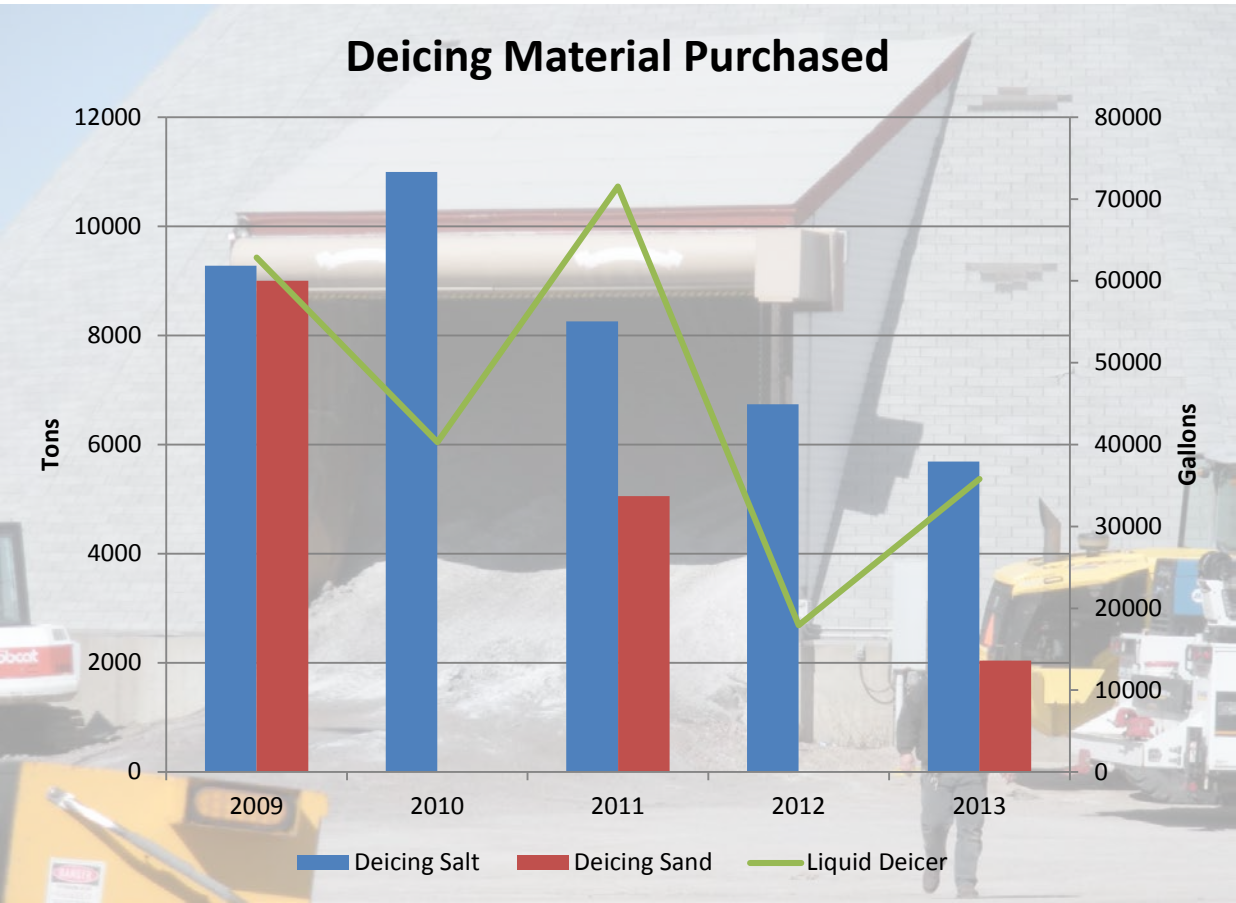
# Fleet Maintenance Shop Usage

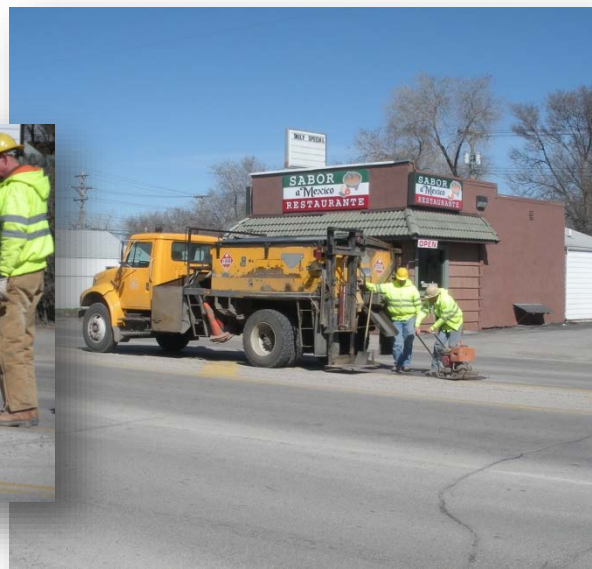
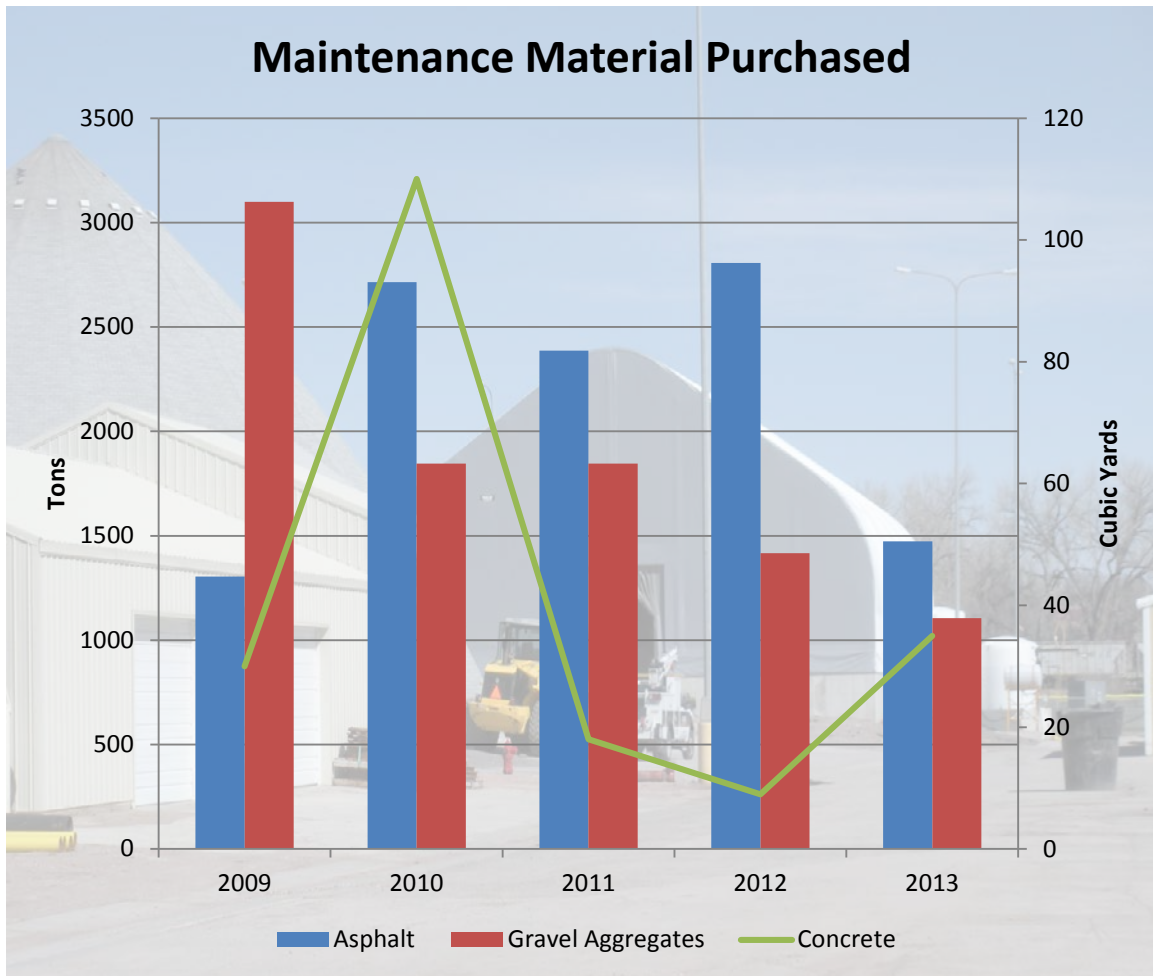
2012 Labor Hours2 2011 Labor Hours 2010 Labor Hours2 2013 Labor Hours



## General Street Maintenance









## Street Cleaning

Approximately 407 tandem truck loads or 3722 tons of sweepings from City streets were hauled to the Landfill for cover material. 19,280 lane miles of street surfacing was swept in 2013.



# **CITY OF RAPID CITY SNOW AND ICE CONTROL POLICY**

Reaffirmed by City Council on October 17, 2011

## **GOAL:**

To provide the motorist with the safest driving surface possible, in an efficient and economical manner, with the resources available.

## **CHEMICAL TREATMENT OF STREETS:**

Initial service of streets during a snow/ice incident will be applications of sand, salt, liquid deicer or a combination of these products. Streets will be treated in the following order of priority:

1. All arterial and emergency routes along with those streets having steep grades or other hazardous geometry and major intersections.
2. Collector and sub-collector streets and school routes.
3. Residential streets.

To reduce the amount of material used, flat level streets are not treated unless a special situation should exist. Other accepted chemicals may be used for maximum effectiveness.

## **PLOWING POLICY:**

Snow plowing incidents will be divided into three levels of service. The service level will be determined by the Director of Public Works or his designee.

- **LEVEL A RESPONSE:** (approximately 2-4" snow depth)

This level of service will include the plowing of all arterial streets, emergency routes, streets with steep grades and other hazardous geometry, collector streets and major intersections. May include downtown snow removal.

- **LEVEL B RESPONSE:** (approximately 4-6" snow depth)

Sub-collector streets and some high traffic residential streets will be plowed in addition to those streets covered in "Level A Response". Included in this service will be downtown snow removal. Some work may be contracted with the private sector.

- **LEVEL C RESPONSE:** (greater than 6" snow depth)

All remaining Rapid City Streets. Contractors will be hired so this service may be completed in the shortest period of time possible.

Driveway entrances will not be opened by City crews under routine plowing operations. Exceptions can be made to this policy in special situations as may be determined by the Director of Public Works or his designee.

Clearing of the snow from sidewalks located at either curb side or property line, shall be the responsibility of the property owner as per ordinance 12.20.070 of the Rapid City Municipal Code. City policy will be to remove the snow from sidewalks on public bridges and from those curb side sidewalks located on streets with four or more traffic lanes, on a predominantly residential street and on a school pedestrian route. This work will be done only after street plowing operations have been completed.

It shall be the practice of the City to plow the street from curb to curb in order to maintain surface drainage. Should mail delivery be halted at a residence because a windrow of snow is blocking the mail box, the City will remove enough snow for mail service to resume if plowing was improperly done.

### **SNOW REMOVAL:**

As per Chapter 10.48 of the Rapid City Municipal Code, snow removal operations will be performed in the downtown core area, other posted areas, and those areas deemed necessary by the Director of Public Works or his designee. This work will be performed primarily during night time hours to minimize traffic interference.

When a "Weather Condition 3" (heavy intense storm of prolonged duration) is declared by the Emergency Management Office, the Mayor or his designee may declare a Snow Emergency. In this case all available personnel will be called to duty.

