

Plat of Lots 1 and 2 of Stamper Subdivision

(formerly all of Lot 1R Revised in Block 1 of the Original Townsite of the Town of Old Town)
 Located in the NW1/4 SW1/4 of Section 26, T1N, R7E, BHM,
 Rapid City, Pennington County, South Dakota

14RZ005



December 5, 2013
 Basis of Bearings
 Grid North as
 determined by GPS

Prepared by Flak Land Surveying
 & Consulting Engineers, Inc.
 P.O. Box 8154, Rapid City, SD 57709
 605-346-1638
 Project # 13-08-01

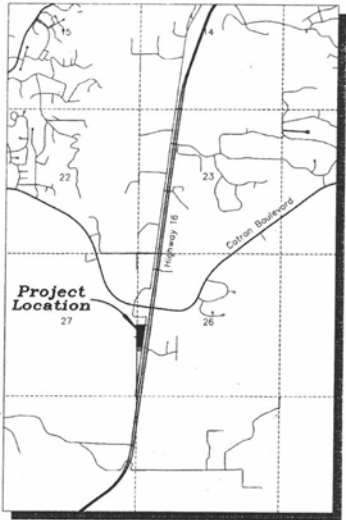
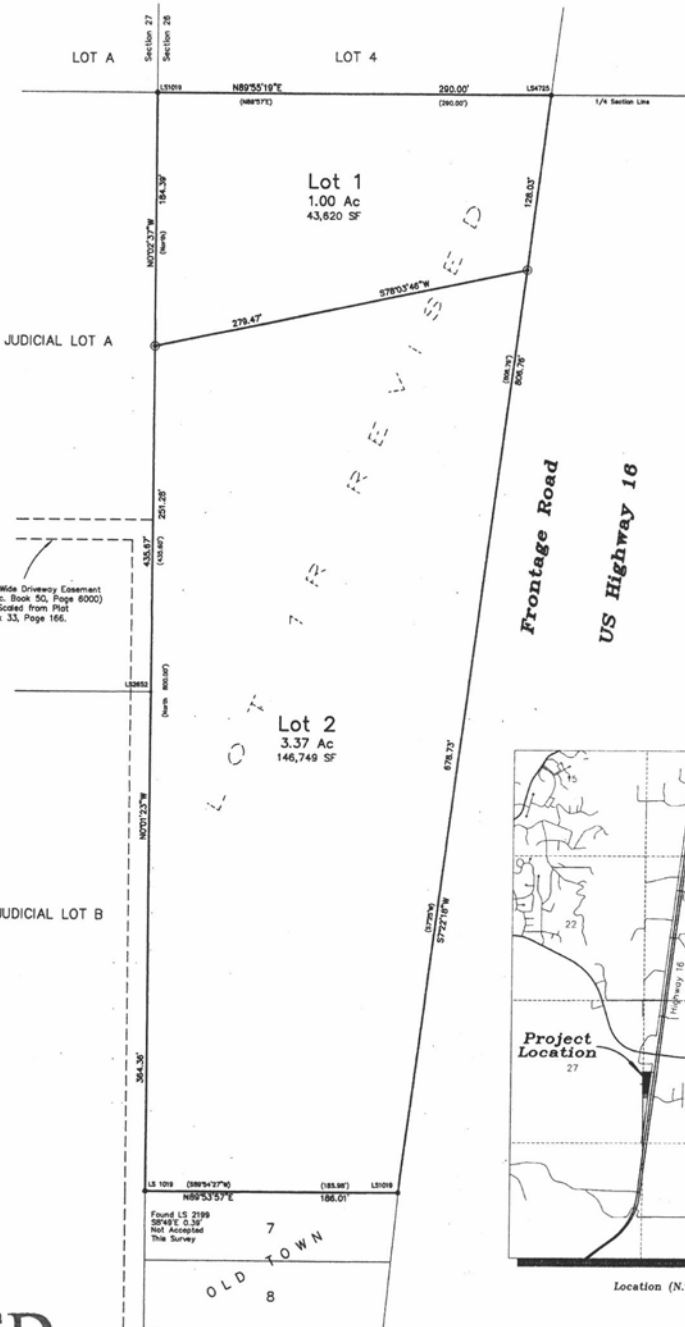
Utility & Minor Drainage Easements: E' on the interior sides of all lot lines

All major drainage easements shown hereon shall be kept free of all obstructions,
 including but not limited to buildings, walls, fences, hedges, trees and shrubs.
 These easements grant to all public authorities the right to construct, operate,
 maintain, inspect and repair such improvements and structures as it deems expedient
 to facilitate drainage from any source.

LEGEND

- = Found Survey Monument, LS 4224 or as noted
- ⊙ = Found or Set Rebar with cap marked "RW FISK 6565"
- N89°55'16"E = Measured Bearing/Distance
- (889/97) = Record Bearing/Distance

See Misc Book 102, Page 546 for Vacation of
 Section Line Right-of-Way



Location (N.T.S.)

Found LS 2199
 S89°48' E 3.36
 Not Accepted
 This Survey

7
 8
 OLD TOWN