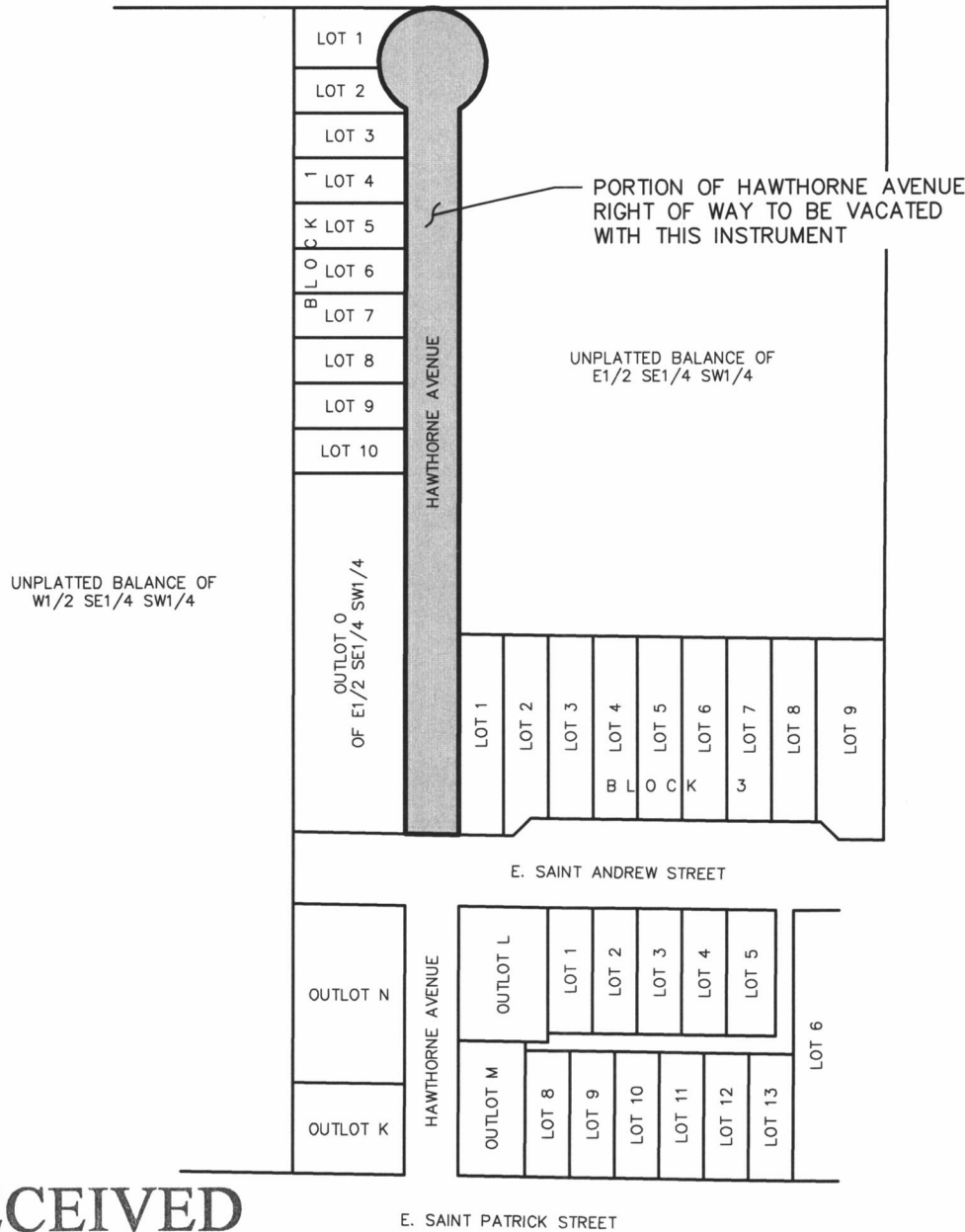
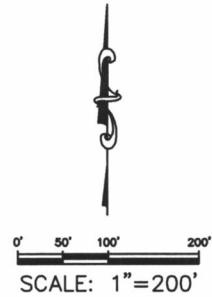


"EXHIBIT A"

UNPLATTED BALANCE OF SE1/4 SW1/4 NW1/4,
 UNPLATTED BALANCE OF SW1/4 SE1/4 NW1/4 LESS LOT H3,
 UNPLATTED BALANCE OF N1/2 SW1/4 LESS SDSM&T CAMPUS SUBDIVISION,
 THAT PART OF VACATED CLARK STREET IN NW1/4 SW1/4



RECEIVED

FEB 14 2014

RAPID CITY COMMUNITY PLANNING & DEVELOPMENT SERVICES

DESCRIPTION OF RIGHT OF WAY VACATED BY THIS INSTRUMENT
 THAT PORTION OF HAWTHORNE AVENUE LYING NORTH OF E. SAINT ANDREW STREET AS SHOWN HEREON. LOCATED IN THE E1/2 SE1/4 SW1/4 OF SECTION 6, T1N, R8E, BHM, RAPID CITY, PENNINGTON COUNTY, SOUTH DAKOTA.

RIGHT OF WAY VACATION
 A PORTION OF HAWTHORNE AVENUE
 LOCATED IN THE E1/2 SE1/4 SW1/4
 OF SECTION 6, T1N, R8E, BHM
 RAPID CITY, SOUTH DAKOTA

JANUARY 21, 2014

Surveyed By: _____
 Date: _____
 Drawn By: KJS
 Checked By: DW
 Location:
SW1/4 OF SECTION 6
T1N, R8E, BHM

F M G, Inc.
 3700 Sturgis Road
 Rapid City, SD 57702-0317
 (605) 342-4105 FAX (605) 342-4222
 www.fmgengineering.com

090010