



4

A Vibrant Livable Community



Rapid City will continue to become a more livable, vibrant, and desirable community in which to live, work, contribute, and play. We value the quality, character, and diversity of our City’s neighborhoods and the accessibility of parks, schools, and services. We are committed to addressing infrastructure and other needs in our established neighborhoods and historic districts and will ensure our new neighborhoods are attractively designed and include a range of housing types to meet the needs of our growing and changing population. We value Downtown as the vital center of our community, and we will continue to work to ensure its long-term success and vitality.

OVERVIEW

Rapid City provides an appealing mix of historic charm and modern development and amenities. Downtown is the community’s thriving, historic core, and serves as a regional center of activity for residents and visitors alike. Recent efforts, such as the construction of Main Street Square, and hosting of community events such as Summer Nights and Movies Under the Stars, have helped revive Downtown, building momentum for continued investment and activity. As Downtown revitalization efforts continue, it will be important to retain the area’s historic character and buildings – important elements

that add authenticity and appeal to both visitors and residents alike.

Beyond Downtown, Rapid City features a wide range of diverse and distinct neighborhoods, some of which are established and others that are newly emerging. Single-family, detached housing remains the predominant option in most neighborhoods, but future population and cultural trends indicate growing demand for expanded housing alternatives. In addition to changing housing product preferences, it is challenging for many in the local workforce—particularly in the tourism and retail services industries—to find quality housing that is attainable. Looking

forward, increasing quality housing options for Rapid City residents is a key objective of this Plan. High priority housing needs that have been identified are primarily focused on increasing the amount and quality of housing affordable and available to low and moderate income residents. Priority housing needs include increasing the number of affordable rental units for singles and families, rehabilitating the existing housing stock in older neighborhoods, and reducing barriers to homeownership.

Many of Rapid City’s established neighborhoods, activity centers, and corridors are beginning to show their age, and some are neglected or in decline.



4. A Vibrant Livable Community

Maintenance and reinvestment could help stabilize and reestablish these areas as desirable portions of the community. Moreover, infill and targeted redevelopment may help reenergize some of these areas, providing a catalyst for additional change and investment.

At all stages of community development, including expansion into new growth areas and refocusing inward through infill and redevelopment, it is important to consider overarching community expectations for development quality, community appearance, and resource protection. Growth and development should not detract from the community, but rather help enhance community vibrancy, livability, and desirability. To support this vision, the principles, goals, and policies in this chapter focus on:

- Elevating the quality of development and community appearance;
- Building diverse and livable new neighborhoods;
- Maintaining the character and livability of existing neighborhoods and historic districts;
- Continuing revitalization of Downtown Rapid City;
- Developing vibrant activity centers and corridors;
- Creating community partnerships within neighborhoods; and
- Protecting and preserving environmental, cultural, and historic resources.

Principles, Goals, and Policies (LC)

Principle LC-1: Elevating the Quality of Development

Rapid City will project a positive image for the community by promoting variety and visual interest and the use of durable, long-lasting materials in all new development. Particular attention will be placed on strengthening the community's image at major gateways to the community.

Goal LC-1.1: Encourage variety, visual interest, and durability in the design of all new development.

LC-1.1A: INNOVATIVE DESIGN

Encourage creativity, flexibility, and innovation in the design of new developments and neighborhoods.

LC-1.1B: DURABLE MATERIALS

Ensure that buildings are designed and constructed with materials that will remain durable in Rapid City's climate.

LC-1.1C: SUSTAINABLE BUILDINGS AND SITES

Permit and encourage the use of sustainable site planning and building design techniques such as drought-tolerant landscaping, recycled materials, energy efficient design, and the integration of alternative energy sources.

LC-1.1D: CONNECTED AMENITIES

Integrate public and private amenities such as parks, trails, and public gathering spaces throughout new development areas.

LC-1.1E: CONTEXT-SENSITIVE DESIGN

Ensure the design of new development is compatible with adjacent buildings and the surrounding neighborhood context in terms of height, scale, and the overall mix of uses.





Goal LC-1.2: Maintain and enforce standards that address property upkeep and appearance.

LC-1.2A: CODE ENFORCEMENT

Administer, enforce, and periodically review and update City ordinances related to public health, safety, signage, and property maintenance issues.

LC-1.2B: REINVESTMENT PROGRAMS

Explore offering City-led programs and support other organizations' efforts and programs to encourage property maintenance and/or rehabilitation such as debris removal events, paint-a-thons, energy efficiency improvements, emergency repairs, and adopt-a-neighbor partnerships. Consider partnerships with the private sector and non-profits as a way to further support reinvestment.

Goal LC-1.3: Project a positive community image along Rapid City's entrance corridors and at City gateways.

LC-1.3A: GATEWAY AND ENTRANCE CORRIDOR STANDARDS

Establish standards to guide the design and appearance of the community's gateways and entrance corridors (as identified on the Future Land Use map). Standards may address topics such as landscaping, lighting, signage, and other streetscape or urban design elements. (See Design Principles for Gateways and Entrance Corridors, page 110.)

LC-1.3B: ENTRANCE CORRIDOR COORDINATION

Coordinate with South Dakota Department of Transportation (SDDOT), adjacent communities, and Pennington and Meade Counties, to develop coordinated visions, standards, and plans for improvements along major entryway corridors into Rapid City. Major entryways into the City are identified on the Future Land Use Map and include the following:

- **Elk Vale Road:** traversing the southeastern section of the community from Interstate 90 to the north to Mount Rushmore Road to the south. This corridor provides multiple points of entry into the community and is a primary route across the City as well. Access control, signage, and landscaping are all important considerations as growth and development occur along this corridor.
- **Haines Avenue:** stretching north from Interstate 90 to beyond the County line, this corridor is located in a high-growth area. Coordination with Meade and Pennington Counties will help ensure that this corridor remains an inviting entrance into the northern portion of Rapid City.
- **East SD Highway 44:** extending from the City's core near East Omaha Street east to the Rapid City Regional Airport. Coordination is needed to ensure that this entryway projects a positive image of the City as growth and development spread east of the community.
- **SD Highway 79:** extending south of Elk Vale, this corridor is envisioned as the community's industrial corridor, but considerations should be given to limit the visual impacts of heavy industry.
- **Interstate 190:** stretching from Interstate 90 to the north to Omaha Street to the south. This corridor is entirely within the City limits, and presents opportunities to enhance the sense of arrival into the community and serves as a key entry point to Downtown. With the pending redesign/ redevelopment of the I-190 interchange and the Rushmore Plaza Civic Center's close proximity to said interchange, it is imperative that coordination and discussion coincide to ensure visitors have an attractive and easy ingress and egress to and from the facility.
- **Interstate 90:** including the segments west of Interstate 190 and east of North Elk Vale Road. Coordination should involve adjacent communities (Box Elder, Summerset and Piedmont) and may include topics such as signage, conservation of views and natural features, and landscaping, screening and buffering.





4. A Vibrant Livable Community

- **Jackson Boulevard (SD Highway 44):** extending west of Canyon Lake, this area is a setting for conservation of scenic views and forested lands.
- **Sturgis Road:** stretching north of the Rapid City limits. Issues and opportunities include coordination with Summerset, Piedmont, and the mining/extraction industries, and conservation of open lands and views.
- **Deadwood Avenue:** extending from the County line south to West Chicago Street, this is a predominantly industrial corridor with opportunities for enhanced landscaping and sidewalks.
- **US Highway 16:** extending south from Cleveland Street to beyond the Rapid City limits. Issues and opportunities along this corridor include conserving views and natural features and coordination with the tourism industry.

LC-1.3C: GATEWAY IMPROVEMENTS

Integrate design improvements (e.g., lighting, landscaping, bridges, and signage) as development, redevelopment, and/or capital projects occur at key gateways to the City (as identified on the Future Land Use map). Key community gateways include interchanges and other noteworthy landmarks (such as crossing into the City limits) are identified on the Future Land Use map and include the following:

Interchanges

- East SD Highway 44 at North Elk Vale Road

- Interstate 90 at North Elk Vale Road
- Interstate 90 at North Deadwood Ave
- SD Highway 79 (Cambell Street) at Elk Vale Road
- Interstate 90 at Interstate 190
- Interstate 190 at Omaha Street

Landmarks

- Mount Rushmore Road at Tower Road (near Regional Health center)
- US Highway 16 at the City's southern limits (near Fort Hayes Drive)
- Jackson Boulevard at Canyon Lake Park (near Chapel Lane)
- Sturgis Road at the City's northern limits (north of Hidden Valley Road)

Principle LC-2: Building Diverse and Livable New Neighborhoods

Rapid City will encourage the development of new neighborhoods that contain a mix of land uses, including a range of housing types to meet the varying needs of its residents. The City will support the development of new neighborhoods that maximize investments in existing parks, trails, roadways, and utility services, and that enhance connections between neighborhoods and community destinations.

Goal LC-2.1: Establish new neighborhoods that meet the community's varied needs.

LC-2.1A: TARGETED RESIDENTIAL GROWTH AREAS

Support residential development within the Urban Services Boundary in areas that maximize available infrastructure and community amenities.

LC-2.1B: COMPREHENSIVE HOUSING STRATEGY

Establish a comprehensive housing strategy to ensure that quality and affordable housing options are accessible to all income levels and household types. Create definitions and targeted strategies for a variety of household types. Encourage the development of housing that aligns with the needs of each targeted group in terms of price, size, type, and location. Expand the City's purview and approach to housing beyond programs and housing groups currently in place using community development block grant funds.

LC-2.1C: VARIETY OF HOUSING TYPES

Encourage new neighborhoods that contain a mix of housing types, such as various sizes of single-family detached, attached, townhomes, apartments, lofts, and housing for special populations (e.g., elderly or disabled residents). Support a mix of lot sizes, densities, and housing prices and styles. Locate high-density and multi-family housing near collector and arterial streets, transit, shopping, and services, particularly when intended for elderly or disabled residents or for affordable or workforce housing.



LC-2.1D: NEIGHBORHOOD CHARACTER

Promote variety and visual interest in the design of new neighborhoods through means such as multiple home models, varied garage orientations, different façade designs, and mixed materials and color schemes.

LC-2.1E: NEIGHBORHOOD-SERVING USES

Support the incorporation of small-scale retail, mixed-use and service uses and home-based occupations to meet the daily needs of neighborhood residents.

LC-2.1F: PHASED DEVELOPMENT

Establish phasing plans for larger developments to address the timing of infrastructure improvements and the construction of amenities such as parks and trails.

Goal LC-2.2: Connect new neighborhoods to the larger community.

LC-2.2A: NEIGHBORHOOD CONNECTIONS

Connect new and existing neighborhoods together with

features such as sidewalks, trails, parks, schools, and other gathering spaces to provide opportunities for interaction and strengthen sense of community.

LC-2.2B: INFRASTRUCTURE CONNECTIONS

Provide opportunities for additional infrastructure linkages—such as roadway stubs and water mains—as new neighborhoods develop to maximize investments in infrastructure and enhance connectivity of neighborhoods.

Principle LC-3: Maintaining the Character and Livability of Existing Neighborhoods

Rapid City will encourage reinvestment in and the revitalization of the many diverse existing neighborhoods across the community. Rapid City will work to maintain the quality and character of established neighborhoods and historic districts and ensure that infill and redevelopment is designed in a manner that minimizes impacts on existing

neighborhoods. The City will also support ongoing investment in parks, recreation facilities, schools, libraries, and multi-modal connections to reinforce the stability and livability of established neighborhoods and historic districts.

Goal LC-3.1: Retain and improve the community's unique established neighborhoods.

LC-3.1A: RETAIN AND ENHANCE EXISTING HOUSING STOCK

Support the retention of existing housing and neighborhoods. Encourage ongoing maintenance and promote reinvestment and improvements in declining areas and targeted redevelopment of blighted properties. Work with property owners, neighborhoods, and non-profit organizations as appropriate to bring substandard units into compliance with City codes and improve overall housing conditions.

LC-3.1B: PROACTIVE CODE ENFORCEMENT

Proactively monitor neighborhoods for public health, code enforcement, and safety violations in accordance with the International Property Maintenance Code and other codes and ordinances as adopted by the City. Respond to complaints registered by residents in a timely manner and coordinate tracking of violations between code enforcement officers and building officials to identify and address issues such as substandard housing.



4. A Vibrant Livable Community

LC-3.1C: COMPATIBLE INFILL AND REDEVELOPMENT

Support compatible infill development and targeted redevelopment in existing neighborhoods and historic districts to take advantage of existing infrastructure and to encourage additional upkeep and reinvestment.

LC-3.1D: NEIGHBORHOOD IMPROVEMENT PARTNERSHIPS

Support homeowners' associations and other organizations' efforts to make neighborhood improvements, enhance neighborhood quality and pride, and assist residents unable to make improvements on their own.

LC-3.1E: BUFFERS AND TRANSITIONS

Develop and adopt standards to address appropriate buffers and transitions when new non-residential or multi-family residential development occurs adjacent or within close proximity to single-family or other lower intensity residential uses, or abuts a historic district.

LC-3.1F: HOME OCCUPATIONS

Support the use of residential structures for home-occupation purposes conducted entirely by residents of the dwelling, and as pursuant to other limitations and requirements established in City Ordinances.

LC-3.1G: NON-RESIDENTIAL CONVERSIONS

Permit the conversion of residential structures to limited non-residential uses along

arterials and other major corridors to retain historic character and structures. Consider modifying minimum parking and other development requirements for such non-residential uses in these areas, which can dramatically change their historic character or compatibility with the existing neighborhood.

LC-3.1H: COMMUNITY PARTNERSHIPS

Foster community partnerships within established neighborhoods to assist with capacity building and asset mapping as part of future projects affecting individual neighborhoods.

Goal LC-3.2: Support continued investment in and ongoing maintenance of neighborhood infrastructure and amenities.

LC-3.2A: PARK AND FACILITY MAINTENANCE

Regularly maintain existing parks and other public facilities in neighborhoods, and periodically monitor usage and issues over time to address changing demands and needs.

LC-3.2B: ADAPTIVE REUSE

Support the adaptive reuse of unused schools and other large institutional facilities within neighborhoods to compatible uses such as community centers or places of worship, to retain their roles as neighborhood gathering spaces.

LC-3.2C: PEDESTRIAN AND BICYCLE LINKAGES

Prioritize sidewalk and trail improvements that complete gaps or "missing links" between existing neighborhoods and other community destinations such as schools, parks, or shopping areas.





Principle LC-4: Sustaining a Vibrant Downtown Center

Downtown Rapid City continues to function as the primary, historic center of the community and the hub of cultural, tourism, and government activities for the region. Ongoing revitalization efforts by the City and its partners will ensure the vitality of Downtown continues to flourish. Opportunities for infill and redevelopment within and adjacent to the Downtown Core will be balanced with the preservation of the historic character that is valued by residents and visitors alike. Linkages between Downtown and other centers of activity within the community, such as the Civic Center, South Dakota School of Mines and Technology, and others will continue to be strengthened.



Goal LC-4.1: Reinforce the role of the Downtown as a Regional Activity Center.

LC-4.1B: DIVERSE MIX OF USES

Encourage a diverse mix of uses Downtown including residential, retail, services, employment, entertainment, and public uses, to support the needs of both local residents and visitors, and to encourage round-the-clock vibrancy and activity levels. Integrate a mix of residential housing types within the Downtown Core, as well as in surrounding neighborhoods.

LC-4.1C: PUBLIC ART

Encourage a range of temporary and permanent arts and cultural installations and exhibits Downtown to enhance, activate, and add interest to public spaces.

LC-4.1D: PROGRAMMING AND EVENTS

Support a range of regional, State, and international programming and events that enliven downtown and support business, and cater to diverse audiences including Downtown and City residents, families, students, and visitors.

LC-4.1E: EFFECTIVE PARKING STRATEGY

Explore ways to maximize the effectiveness of downtown parking, including free and metered on-street spaces, and public and private parking lots and structures.

LC-4.1F: NEIGHBORHOOD TRANSITIONS

Establish transitions between more intense Downtown uses and

adjacent residential neighborhoods by buffering them with careful site design, building placement and landscaping, and ensuring appropriate heights, setbacks, step-downs, and massing when new development or redevelopment occurs in transitional areas.

Goal LC-4.2: Promote increased synergy between the Downtown Core and nearby centers of activity.

LC-4.1A: DOWNTOWN AREA MASTER PLAN

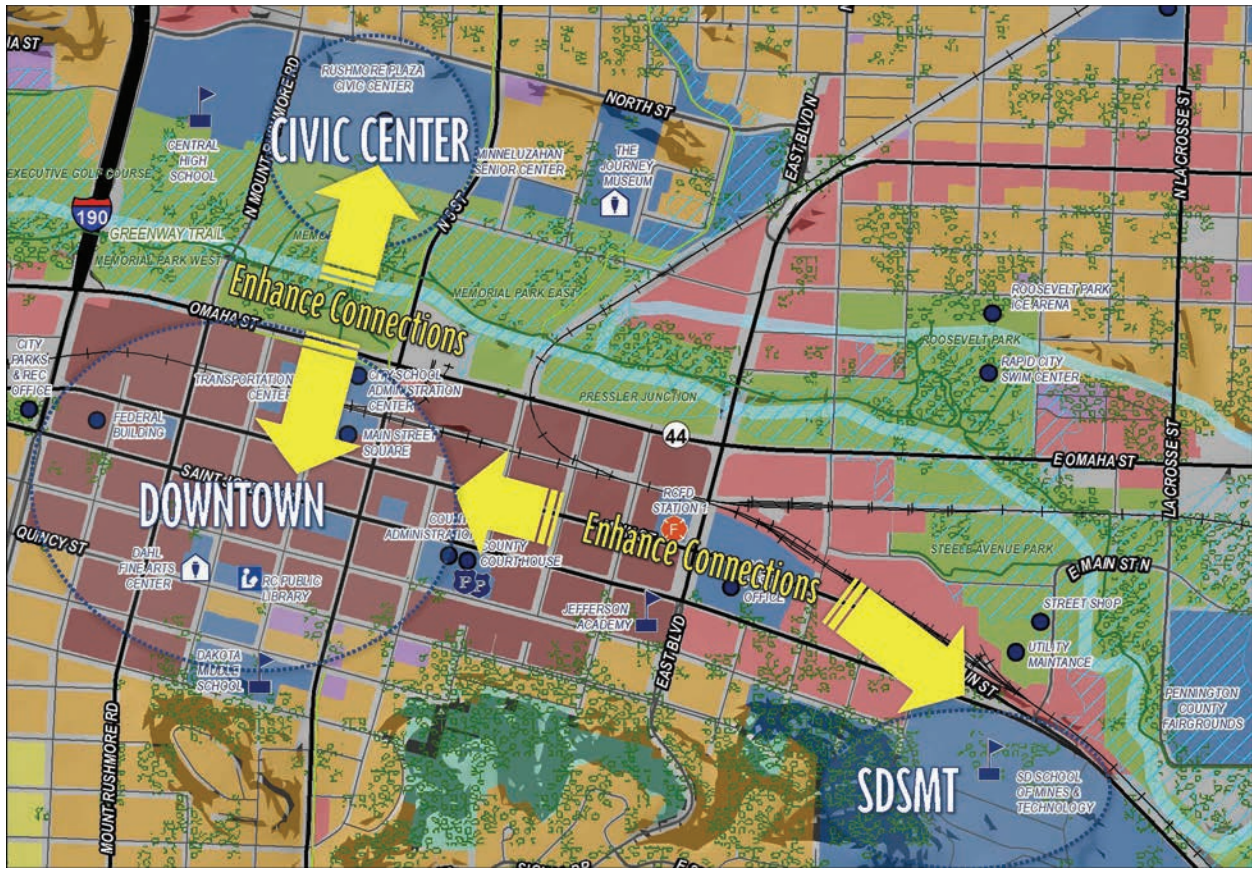
Develop a plan and accompanying strategy for the areas east and north of the Downtown Core, building on the recommendations of the Downtown Master Plan and south Dakota School of Mines and Technology (SDSMT) Master Plan, and the planned expansion of the Rushmore Plaza Civic Center.

LC-4.2A: DIVERSIFICATION OF USES

Encourage intensification and diversification of uses east and north of Downtown, with an emphasis on expanding housing options for students and the local workforce, and shops and services to support tourism and complement the growing SDSMT campus and Rushmore Plaza Civic Center expansion. Establish locations and opportunities to facilitate growth of start-up businesses generated by SDSMT and the Black Hills Business Development Center. Explore opportunities to move the City Streets Shop out of the Downtown area.



4. A Vibrant Livable Community



Downtown Area

LC-4.2B: TARGETED INFILL AND REDEVELOPMENT

Support infill development and targeted redevelopment in the area adjacent to the Downtown Core to maximize infrastructure investments, provide greater diversity in uses, enhance activity levels, promote synergy between unique destinations, and support a more cohesive environment. During redevelopment of areas near SDSMT, vacation of street and alley right of ways should be reviewed during expansion efforts to optimize land use.

LC-4.2C: MULTI-MODAL CONNECTIONS

Expand multi-modal options, facilities, and connections between the Downtown Core and nearby destinations, such as, but not limited to SDSMT and

Rushmore Plaza Civic Center, especially for pedestrians, bicyclists, and transit users.

Principle LC-5: Developing Vibrant Activity Centers and Corridors

Rapid City will encourage the creation of vibrant mixed-use activity centers and corridors in easily accessible and highly visible locations of the community. The City will encourage activity centers that vary in size and composition (e.g., mix of uses, density), but serve the similar purpose of providing services in areas that may be readily accessed from surrounding neighborhoods and, in the case of larger

centers, from the surrounding community and region. The City will also encourage reinvestment in established corridors throughout the community to promote the efficient use of available land and infrastructure and support increased opportunities for alternative housing types in the core of the community.

Goal LC-5.1: Distribute centers for activities and employment throughout the community.

LC-5.1A: VARIED ACTIVITY CENTERS

Highlight and differentiate various activity centers across the community (e.g., regional,



community, employment, and recreation) to provide opportunities to meet the differing needs of Rapid City residents, workers, employers, and visitors. The Future Land Use Plan map identifies the following Activity Centers:

Regional Activity Centers

- Downtown (includes Rushmore Plaza Civic Center, SDSMT, and other major destinations)
- Rushmore Mall
- Rushmore Crossing

Community Activity Centers

- Baken Park
- Catron Boulevard at Sheridan Lake Road
- Civic Center
- East Highway 44 at East 53rd Street
- East Highway 44 at Radar Hill Road
- Elk Vale at South Valley Drive
- FTC Express Center
- Mount Rushmore Road at Moon Meadows Road
- New Safeway Area
- Northgate Shopping Center
- Family Thrift Center at St. Patrick and Cambell Street
- University Center Area
- US 16 Tourism Area
- Wal-Mart Supercenter Area
- Rapid Valley Area
- Regional Health Center
- Mount Rushmore Road Office Park
- North Rapid Light Industrial Area

LC-5.1B: DIVERSE MIX OF USES

Support a diverse mix of uses in activity centers to add variety and economic resiliency. Encourage residential uses in new and emerging regional and community activity centers and explore integrating residential uses to add vibrancy to existing, underutilized activity centers.

LC-5.1C: MULTI-MODAL CONNECTIONS

Encourage multi-modal connections and improvements such as direct bicycle, pedestrian, transit, and vehicular routes that link activity centers and other key community destinations like schools and public facilities.

LC-5.1D: PUBLIC SPACE AND AMENITIES

Incorporate public spaces, libraries, and other amenities such as plazas, patios, and greenspaces into the design of new activity centers and explore opportunities to enhance amenities and public spaces in existing activity centers.

LC-5.1E: NEIGHBORHOOD CONNECTIONS

Enhance pedestrian and bicycle connections between neighborhoods and nearby activity centers to provide safe and convenient access for all residents without needing to rely upon a personal automobile.

Goal LC-5.2: Support reinvestment and revitalization in underutilized activity centers and along the community's key corridors.

LC-5.2A: PRIORITY REVITALIZATION CORRIDORS

Prioritize corridors for reinvestment and align infrastructure investments and other public improvements with these areas to encourage private investment and rehabilitation.

LC-5.2B: REDUCE BARRIERS

Encourage a broader mix of uses (including residential) along corridors and within activity centers in need of reinvestment and revitalization through infill, redevelopment, and adaptive reuse of existing structures. Explore options to reduce barriers to property reuse and reinvestment, such as minimum parking standards and building code requirements.

LC-5.2C: PROPERTY ASSEMBLAGE

Encourage and consider facilitating the consolidation and assemblage of properties to improve and coordinate the redevelopment of blocks or segments of activity centers or corridors, rather than employing a property-by-property approach.

LC-5.2D: MULTI-MODAL CONNECTIONS

Support reinvestment and revitalization of activity centers by encouraging and investing in sidewalk, bicycle, and transit improvements to enhance connectivity to activity centers and along major corridors.



Principle LC-6: Protecting the City’s Environmental, Cultural, and Historic Resources

Rapid City will strive to protect its character-defining natural features and the natural environment as the community grows over time. In addition, Rapid City will continue to promote and strengthen the protection of historically and culturally significant resources that contribute to the community’s unique identity and history and its marketability as a tourism destination.

Goal LC-6.1: Conserve Rapid City’s unique cultural and historic assets.

LC-6.1A: COMPREHENSIVE PRESERVATION PLAN

Periodically update the City’s Comprehensive Preservation Plan to reflect changes in City regulations, the addition of new historic districts, and planning objectives.

LC-6.1B: HISTORIC LANDMARKS AND AREAS

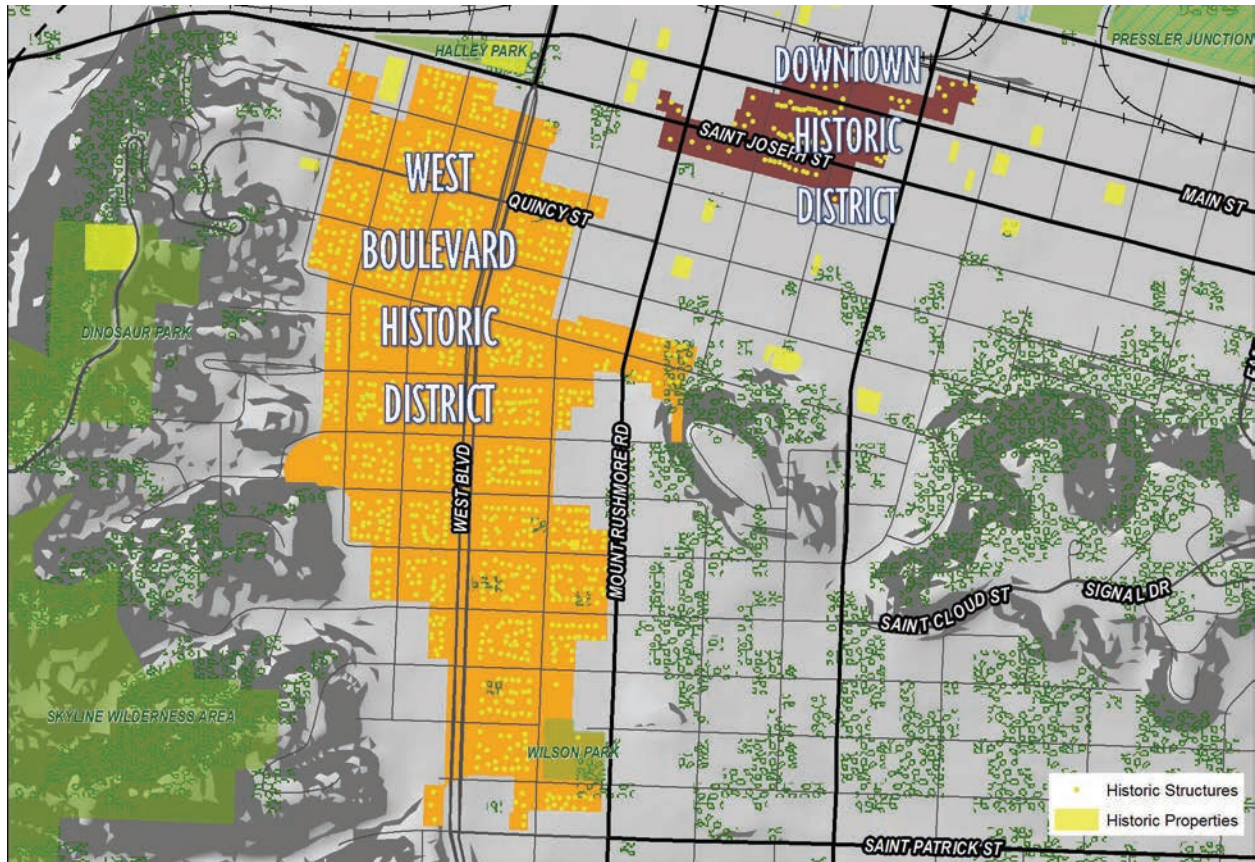
Promote the preservation of historic buildings, signs, districts, and sites of local, regional, and national significance. Update existing historic districts (as shown below) as necessary and identify potentially eligible districts and individual resources.



LC-6.1C: SURVEY AND INVENTORY EFFORTS

Continue to expand survey and inventory efforts:

- Identifying and prioritizing geographic areas and specific resource types to be surveyed;
- Developing and implementing evaluation standards for surveyed resources;
- Updating outdated surveys as needed; and
- Developing and maintaining a list of threatened resources.



Historic Resources



LC-6.1D: EDUCATION AND OUTREACH

Continue to support the efforts of the Historic Preservation Commission (HPC) and efforts to increase awareness in the community regarding the City's historic resources, and resources available to support property owners interested in preserving historic resources.

LC-6.1E: CULTURAL ASSETS

Retain and protect community traditions, historic landscapes, libraries, and other cultural assets to retain the City's authenticity and appeal. Such assets include, but are not limited to, the annual Black Hills Pow Wow, presidential sculptures Downtown, Storybook Island, Dinosaur Park, Founders Park, Memorial Park and Civic Center, Canyon Lake Park, and the Game Fish and Parks Outdoor Campus. Coordinate with members of area tribes and Indian reservations—Pine Ridge, Rosebud, and Cheyenne River Sioux—and other groups to support these efforts.

LC-6.1F: REINVESTMENT AND REHABILITATION

Support efforts to restore and rehabilitate historic properties, and support the development and adoption of City historic district design guidelines to tailor the Secretary of the Interior's standards to unique local conditions.

LC-6.1G: COMPATIBLE INFILL

Ensure new infill development and redevelopment is compatible with historic properties and districts through application of historic review processes and/or design guidelines.

Goal LC-6.2: Conserve and protect Rapid City's natural resources and environment.

LC-6.2A: AIR QUALITY

Protect air quality by encouraging the development of land use patterns that reduce vehicle trips, support transportation alternatives that decrease dependence on single-occupancy vehicles, establishing targets for and monitoring greenhouse gas emissions, and promoting energy efficiency in existing and new buildings.

LC-6.2B: WATER QUALITY

Protect water quality by limiting development in floodplain areas, investing in repairs and improvements to drainage and water treatment infrastructure, and monitoring and ensuring compliance with local, state, and federal water requirements.

LC-6.2C: NATURAL FEATURES

Protect the natural and scenic character of key areas such as the Skyline Drive Wilderness Area, greenway tracts, and Jackson Boulevard/Highway 44 corridor to the west by avoiding extensive development, signage, and lighting in these areas.

LC-6.2D: AGRICULTURAL CONSERVATION

Support existing agriculture operations and retain existing agricultural zoning outside of the Urban Services Boundary. Avoid rezoning agricultural land for speculative purposes, and encourage the submittal of development plans when agricultural land is proposed to be rezoned.

LC-6.2E: WILDLIFE CORRIDORS

Explore guidelines or standards to protect and limit new development in established wildlife corridors.

LC-6.2F: SUSTAINABLE DEVELOPMENT

Encourage the use of sustainable development practices in public facilities, private development, and the design of parks, landscaping, and stormwater management facilities to reduce water and energy consumption, protect water and air quality, and minimize impacts on natural features and wildlife habitat.