



# ELDERBERRY BLVD. OVERSIZE REQUEST

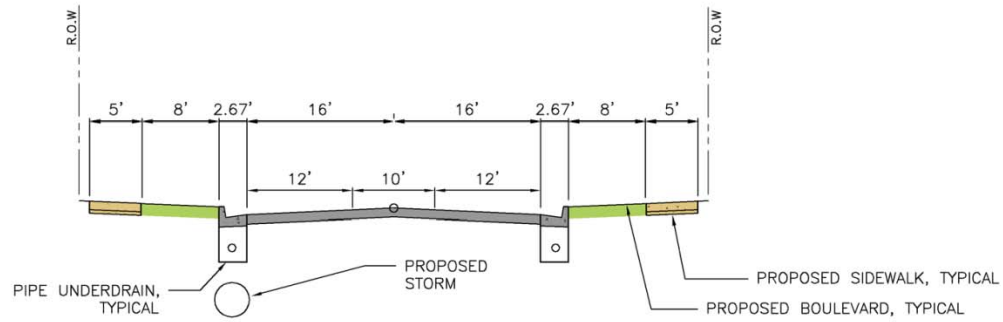
ORCHARD MEADOWS SUBDIVISION

YASMEEN DREAM, LLC.

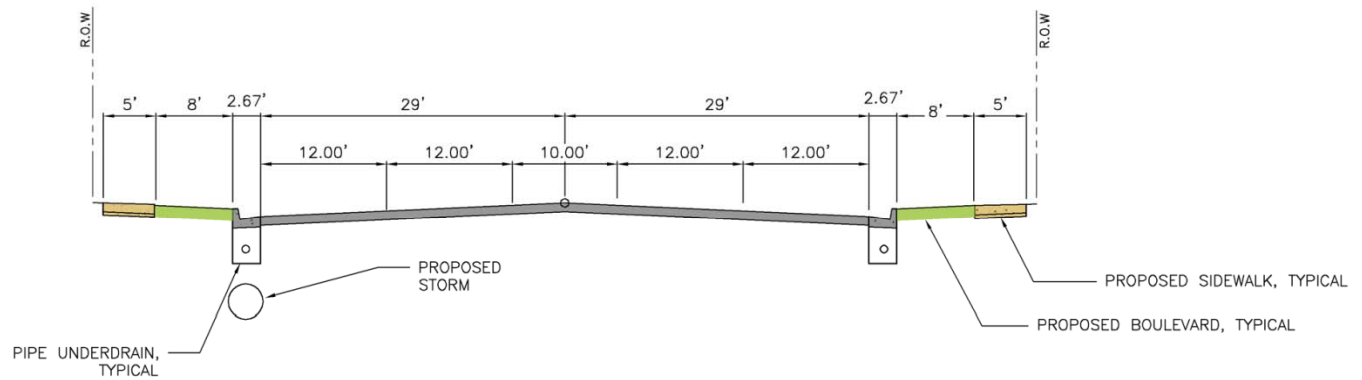
DREAM DESIGN INTERNATIONAL, INC.

# City Ordinance

- \* The developer shall not be required to pay the full cost of any highway or arterial street, but shall participate in the cost of these improvements in the amount that a collector street (including all utility and drainage improvements) would cost if situated where the highway or arterial street is located.



**COLLECTOR STREET SECTION**  
TYPICAL  
NOT TO SCALE



**ELDERBERRY BOULEVARD SECTION**  
NOT TO SCALE

**ELDERBERRY BOULEVARD OVERSIZE REQUEST**  
**ORCHARD MEADOWS**  
RAPID CITY, SOUTH DAKOTA  
APRIL 7, 2014



**Dream Design**  
International, Inc.  
Engineering, Land Planning,  
Construction Administration

238 Kansas city street, Suite 1, Rapid City, SD 57701  
Phone: 605-388-0288 Fax: 605-388-0145 WWW.DREAMDESIGNINC.COM

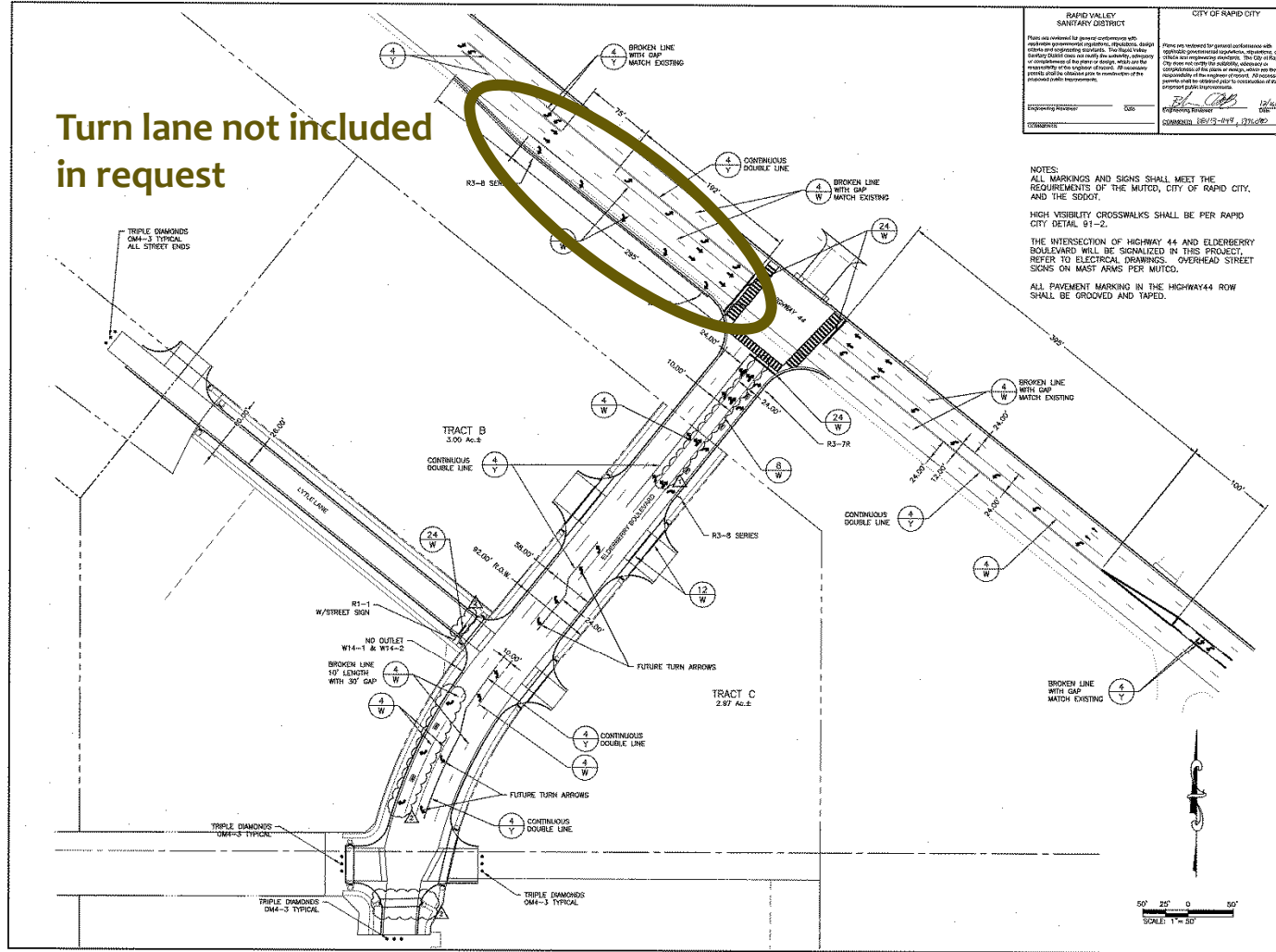
**FIGURE 1**

# Oversize Request

## PHASE 1 - ELDERBERRY BLVD. OVERSIZE ESTIMATE

PROJECT:	ORCHARD MEADOWS PHASE I						
	DDI PROJECT NO. 12-654						
DATE:	1/7/2014						
	BID ITEM DESCRIPTION	UNIT	PLAN QUANTITY	REQUIRED QUANTITY	OVERSIZE QUANTITY	UNIT COST	TOTAL COST
	7" PCC PAVEMENT	SY	5125	3034	2091	\$57.02	\$119,228.82
	GRAVEL CUSHION	TONS	2558	2103	455	\$19.49	\$8,867.95
	PAVEMENT MARKINGS	LS	1	0.9	0.1	\$76,043.00	\$7,604.30
						<b>TOTAL</b>	<b>\$135,701.07</b>

Turn lane not included  
in request



<b>RAPID VALLEY SANITARY DISTRICT</b> <small>Please see contract for general conditions and specifications governing quantities, materials, design and construction methods. The Rapid Valley Sanitary District does not accept liability for any errors or omissions in this drawing. It is the responsibility of the engineer of record to provide correct and complete information for the project. If necessary, errors and omissions shall be the responsibility of the engineer of record.</small>	<b>CITY OF RAPID CITY</b> <small>Please see contract for general conditions and specifications governing quantities, materials, design and construction methods. The City of Rapid Valley does not accept liability for any errors or omissions in this drawing. It is the responsibility of the engineer of record to provide correct and complete information for the project. If necessary, errors and omissions shall be the responsibility of the engineer of record.</small>
Engineering Director: <i>[Signature]</i> Title: <i>[Title]</i>	Engineering Director: <i>[Signature]</i> Title: <i>[Title]</i>
Date: <i>[Date]</i>	Date: <i>[Date]</i>

NOTES:  
 ALL MARKINGS AND SIGNS SHALL MEET THE REQUIREMENTS OF THE MUTCD, CITY OF RAPID CITY, AND THE SDDOT.  
 HIGH VISIBILITY CROSSWALKS SHALL BE PER RAPID CITY DETAIL 91-2.  
 THE INTERSECTION OF HIGHWAY 44 AND ELDERBERRY BOULEVARD WILL BE SIGNALIZED IN THIS PROJECT. REFER TO ELECTRICAL DRAWINGS, OVERHEAD STREET SIGNS ON MAST ARMS PER MUTCD.  
 ALL PAVEMENT MARKING IN THE HIGHWAY 44 ROW SHALL BE GROoved AND TAPED.

Project No: <i>[Number]</i> Date: <i>[Date]</i>	Revision: <i>[Number]</i> Date: <i>[Date]</i>
Drawn by: <i>[Name]</i> Checked by: <i>[Name]</i>	Approved by: <i>[Name]</i> Title: <i>[Title]</i>



**DREAM DESIGN INTERNATIONAL, INC.**  
 ENGINEERING, ARCHITECTURE,  
 LAND PLANNING, CONSTRUCTION ADMINISTRATION  
 PHONE: (605) 348-0558 FAX: (605) 348-0544 WWW.DREAMDESIGNINC.COM

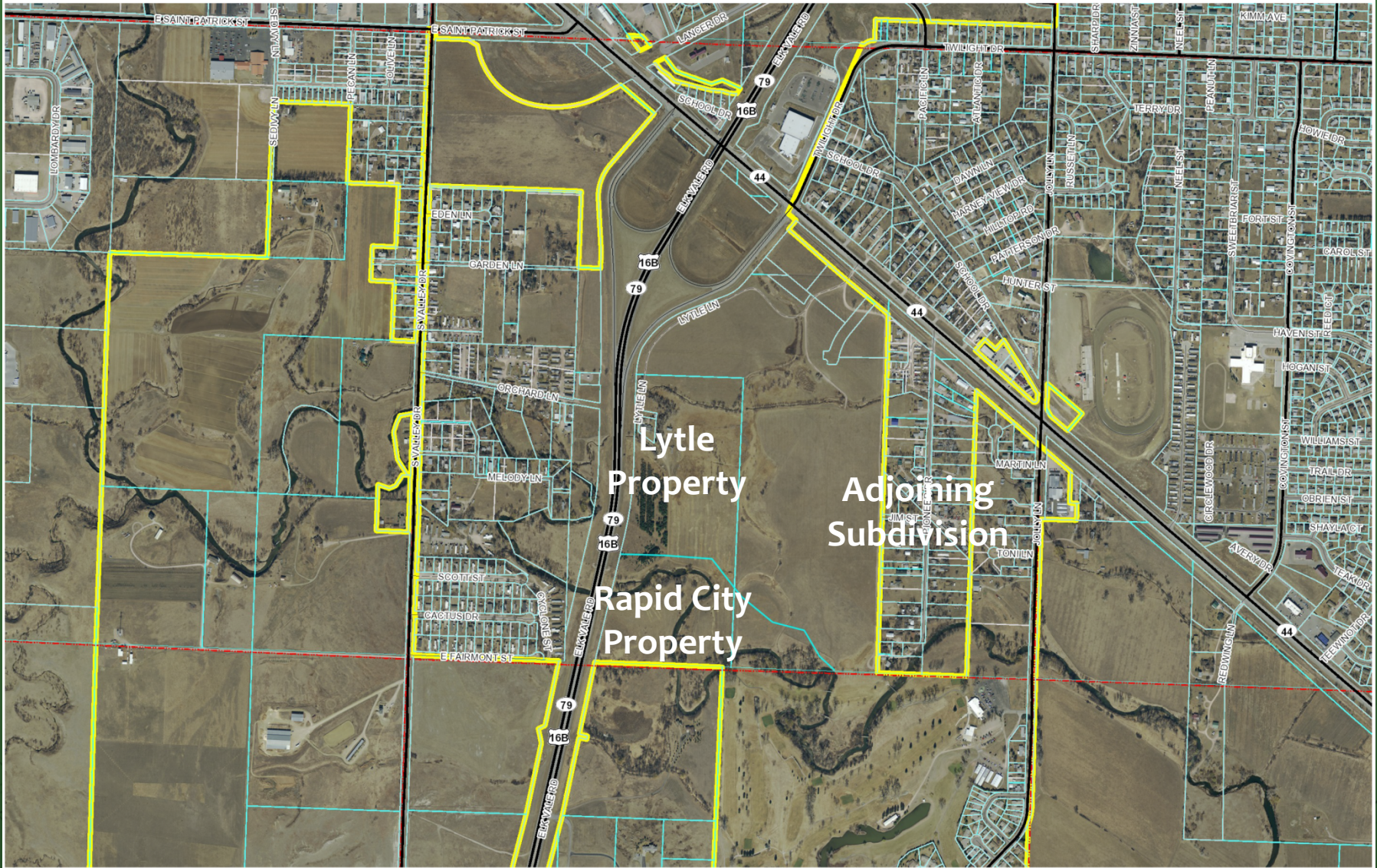
**ORCHARD MEADOWS SUBDIVISION  
 PHASE 1 - STREET & UTILITY PLANS**

Sheet Name: **STRIPING LAYOUT**

Sheet Number: **24 of 31**

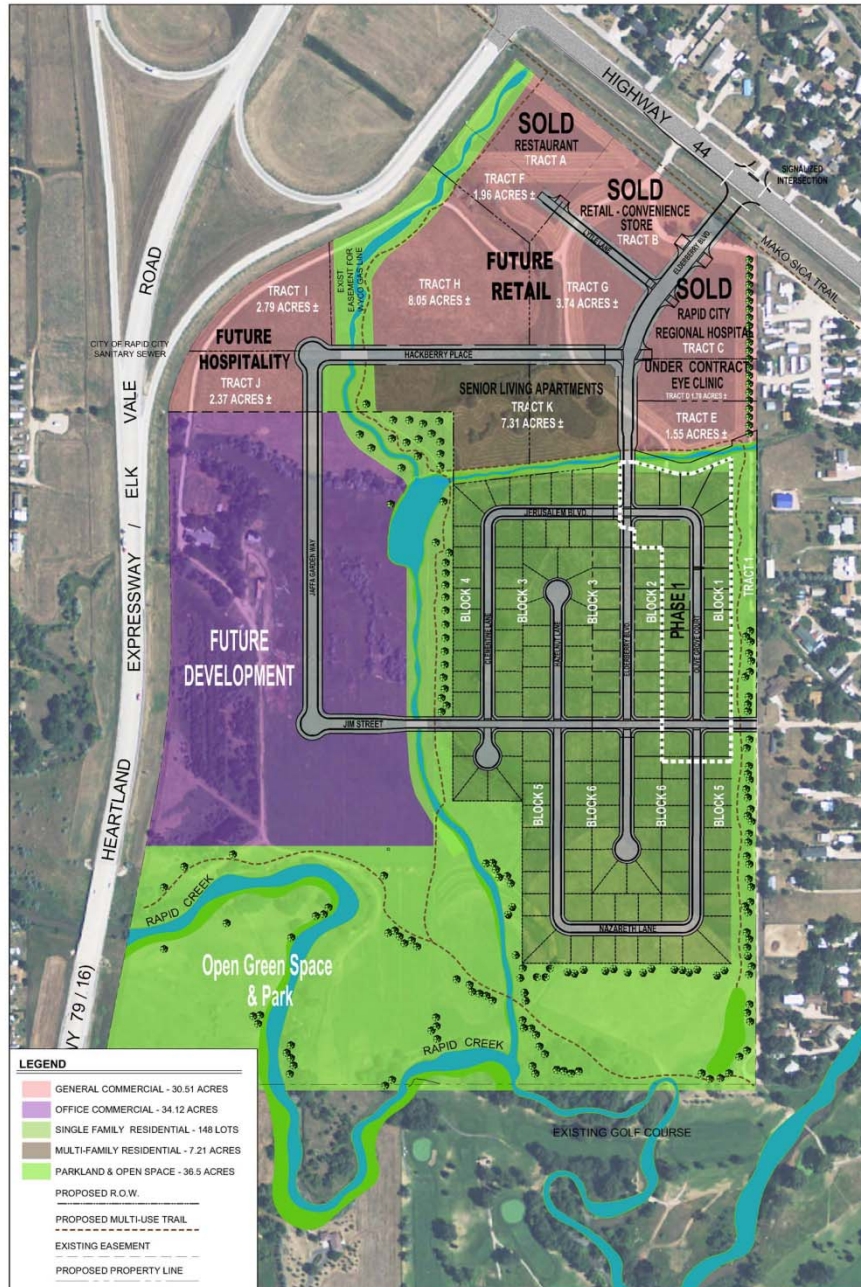
D:\Projects\2013\20130124\20130124.dwg (P) 12/12/13 10:11:11 AM

## Rapid City-Pennington County GIS



1,616.8      0      808.38      1,616.8 Feet

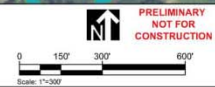
DISCLAIMER: This map is provided 'as is' without warranty of any representation to accuracy, timeliness, or completeness. The burden for determining accuracy, completeness, timeliness, merchantability, and fitness for or the appropriateness for use rests solely on the user. Rapid City and Pennington County make no warranties, express or implied, as to the use of the map. There are no implied warranties of merchantability or fitness for a particular purpose. The user acknowledges and accepts the limitations of the map, including the fact that the data used to create the map is dynamic and is in the constant state of maintenance, correction, and update. This document does not represent a legal survey of the land. There are no restrictions on the distribution of printed Rapid City-Pennington County maps, other than the City of Rapid City copyright/credit notice must be legible on the print. The user agrees to recognize and honor in perpetuity the copyrights and other proprietary claims for the map(s) established or produced by the City of Rapid City or the vendors furnishing said items to the City of Rapid City.



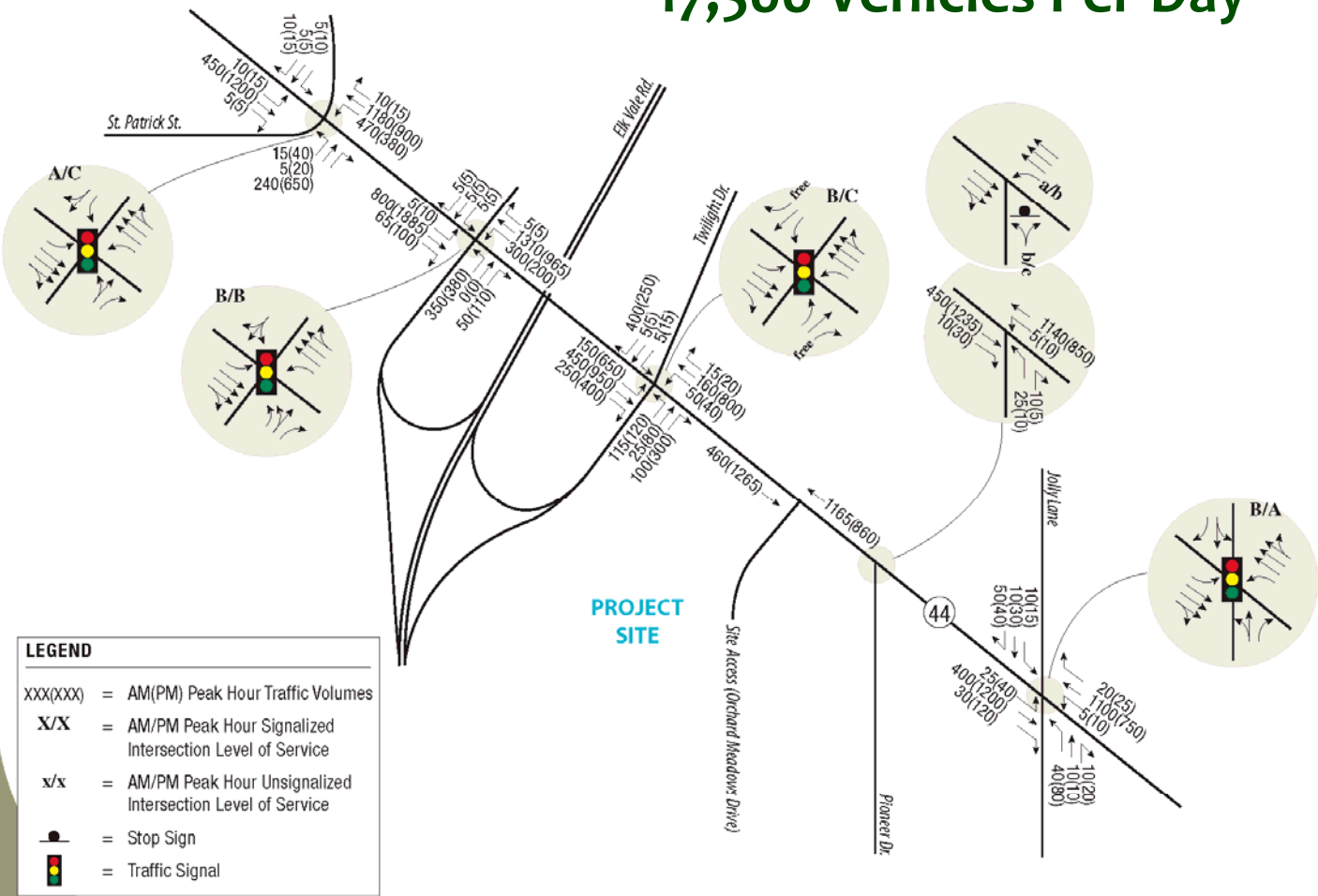
# ORCHARD MEADOWS

MASTER PLAN

RAPID CITY, SOUTH DAKOTA



# 17,500 Vehicles Per Day



LEGEND	
XXX(XXX)	= AM(PM) Peak Hour Traffic Volumes
X/X	= AM/PM Peak Hour Signalized Intersection Level of Service
x/x	= AM/PM Peak Hour Unsignalized Intersection Level of Service
	= Stop Sign
	= Traffic Signal

**Figure 8**  
Long-Term (2035) Background Traffic Conditions

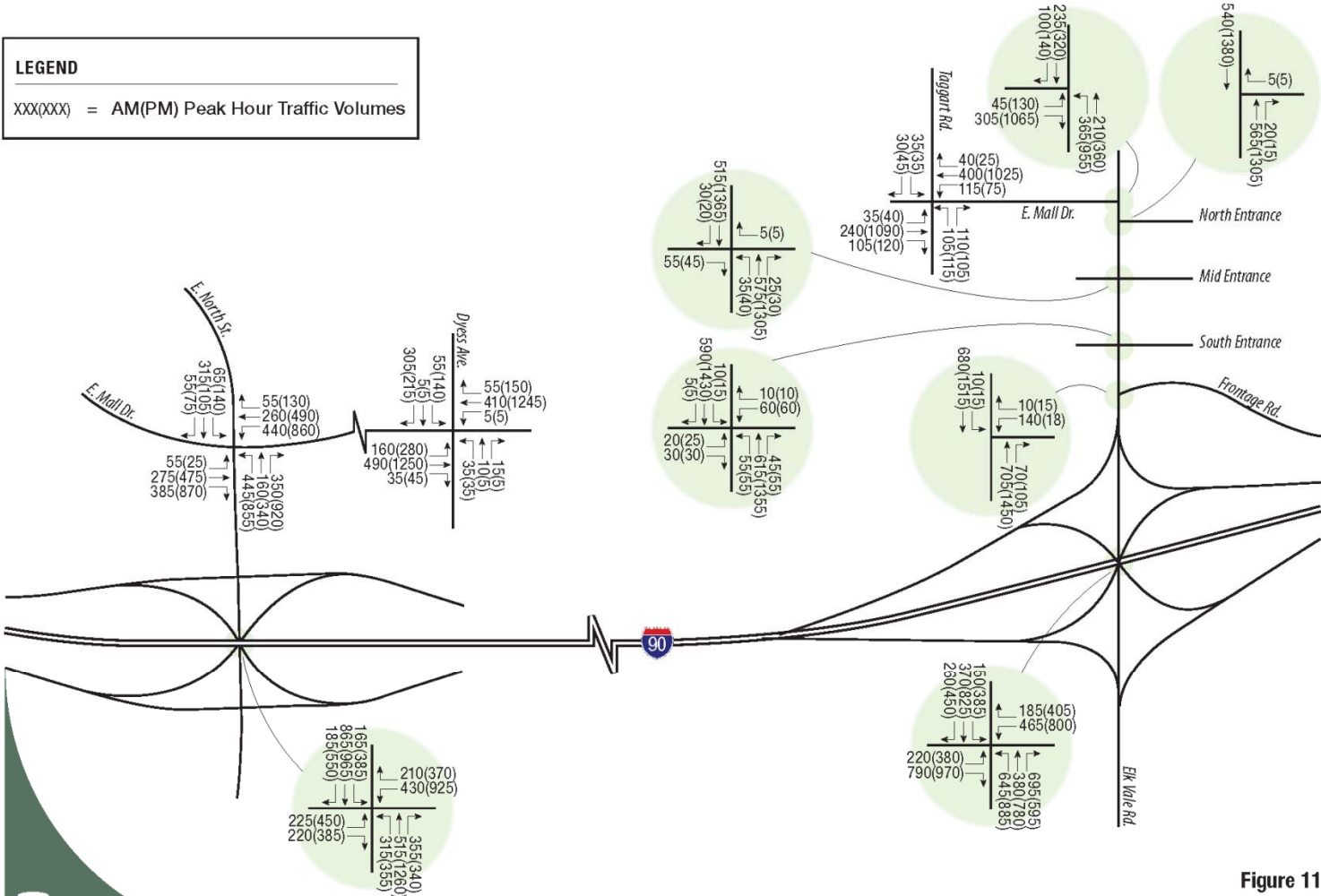


**Rapid City-Pennington County GIS**



DISCLAIMER: This map is provided 'as is' without warranty of any representation to accuracy, timeliness, or completeness. The burden for determining accuracy, completeness, timeliness, merchantability, and fitness for or the appropriateness for use rests solely on the user. Rapid City and Pennington County make no warranties, express or implied, as to the use of the map. There are no implied warranties of merchantability or fitness for a particular purpose. The user acknowledges and accepts the limitations of the map, including the fact that the data used to create the map is dynamic and is in the constant state of maintenance, correction, and update. This document does not represent a legal survey of the land. There are no restrictions on the distribution of printed Rapid City/Pennington County maps, other than the City of Rapid City copyright/credit notice must be legible on the print. The user agrees to recognize and honor in perpetuity the copyrights and other proprietary claims for the map(s) established or produced by the City of Rapid City or the vendors furnishing said items to the City of Rapid City.

**LEGEND**  
 XXX(XXX) = AM(PM) Peak Hour Traffic Volumes

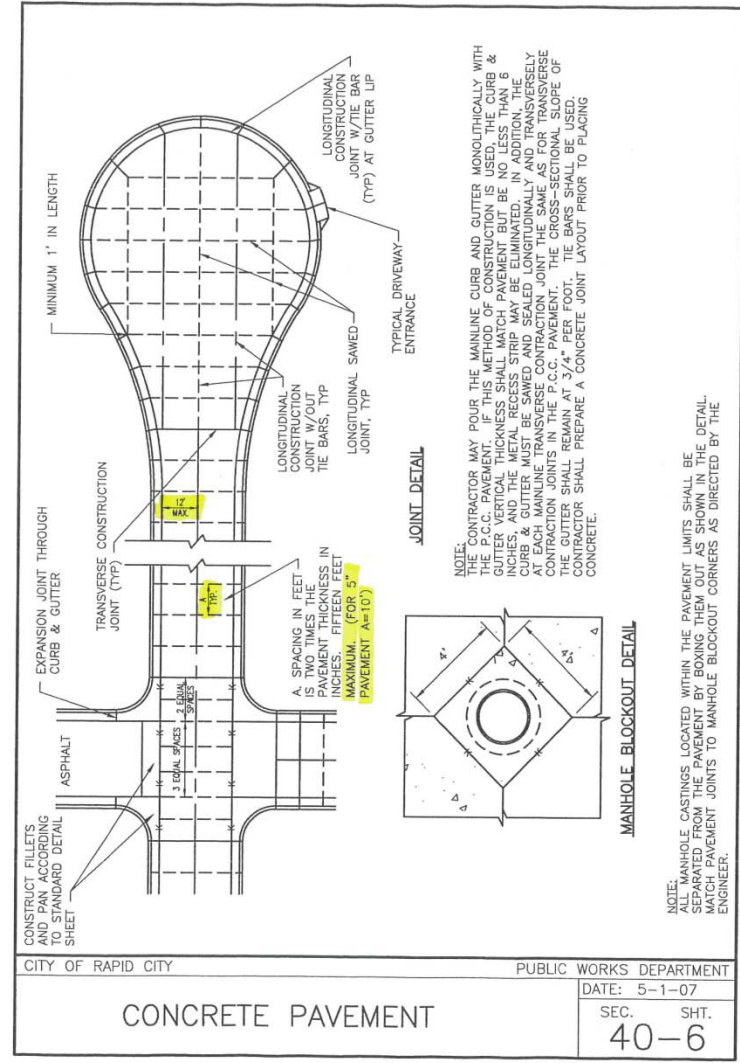


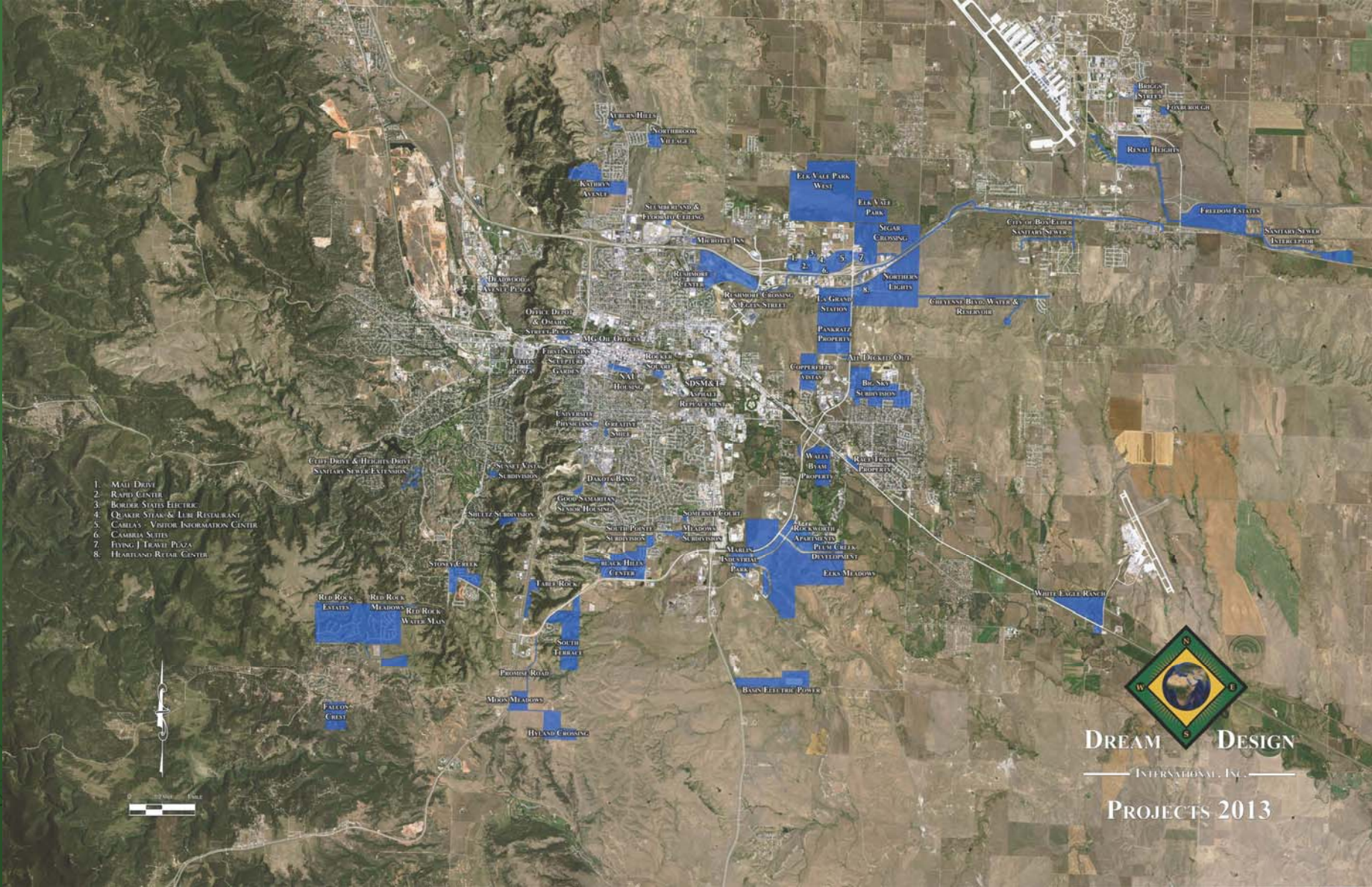
**Figure 11**  
 Year 2035 Total Traffic Volumes

**NORTH**



# SEDIVY LANE





1. Mall Drive
2. Ruff Center
3. Boulder State Electric
4. Q&A's Steak & Lube Restaurant
5. Cambria Suites Visitor Information Center
6. Cambria Suites
7. Fiving J Drive Plaza
8. Highland Retail Center



**DREAM DESIGN**  
 INTERNATIONAL, INC.  
**PROJECTS 2013**