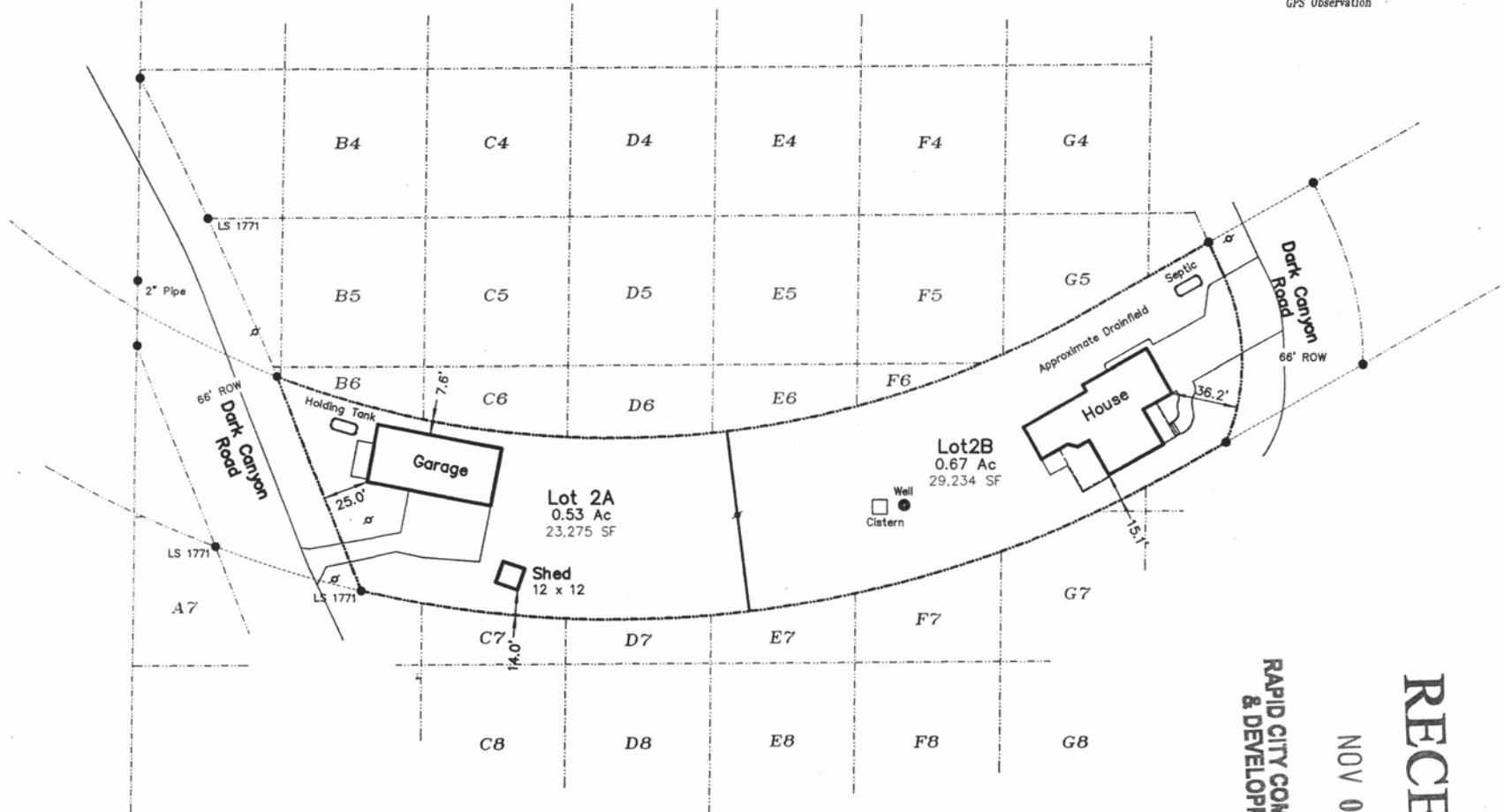
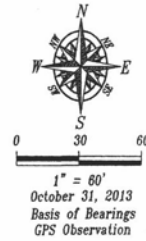


PRELIMINARY



RAPID CITY COMMUNITY DEVELOPMENT

NOV 0

RECEIVED

Fisk Land Surveying & Consulting, Inc.
 1022 Main Street (P.O. Box 8154)
 Rapid City, South Dakota 57709
 (605) 341-1538
 (605) 341-1112 (N)

Lot Division Layout
 Lot 2 of Dahm Subdivision
 Lot 3, S18, T1N, R7E, BHM
 Pennington County, South Dakota

Surveyed by:
ML, CD
 Date:
10/21/13
 Drawn by:
RWF
 Checked by:
JF

Revisions

Site Plan Layout
 1 of 1
 Project No.
 13-10-03