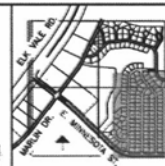


SECTION 16  
SECTION 21

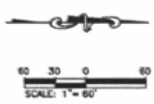
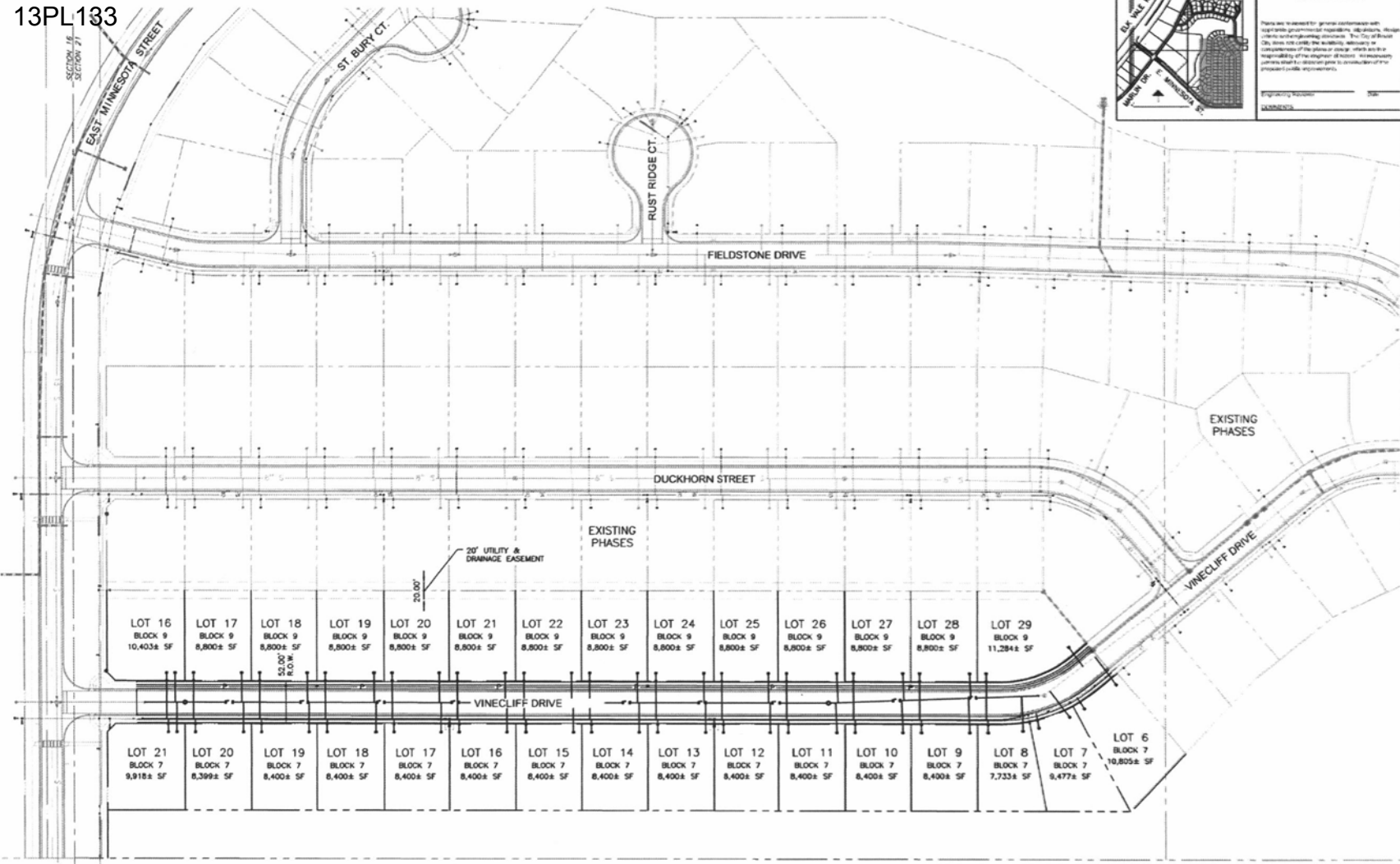


CITY OF RAPID CITY  
Development Services  
Address: 1612 2012 - Primary Subdivision Submittal  
There are no fees for general information with respect to government regulations, standards, design or construction processes. The City of Rapid City does not carry the liability, necessary or appropriate, of the plan or any work and is not responsible for the engineer's or other professional's design or construction of any project or other improvements.  
Engineering Number: \_\_\_\_\_  
Comments: \_\_\_\_\_

Project No. 13-2688	Drawn By: GTR	Drawn By: AMW/AW
Reviewed By: BARNER & ASSOC	Review Date: 10/22/12	

**PRELIMINARY FOR REVIEW ONLY**

**DREAM DESIGN INTERNATIONAL, INC.**  
ENGINEERING, LANDSCAPE ARCHITECTURE, LAND PLANNING, CONSTRUCTION ADMINISTRATION  
PHONE: (605) 348-8538 FAX: (605) 348-0545 WWW.DREAMDESIGNING.COM  
**VINECLIFF DRIVE STREET & UTILITIES**  
RAPID CITY, SOUTH DAKOTA



PROJECT OVERVIEW