

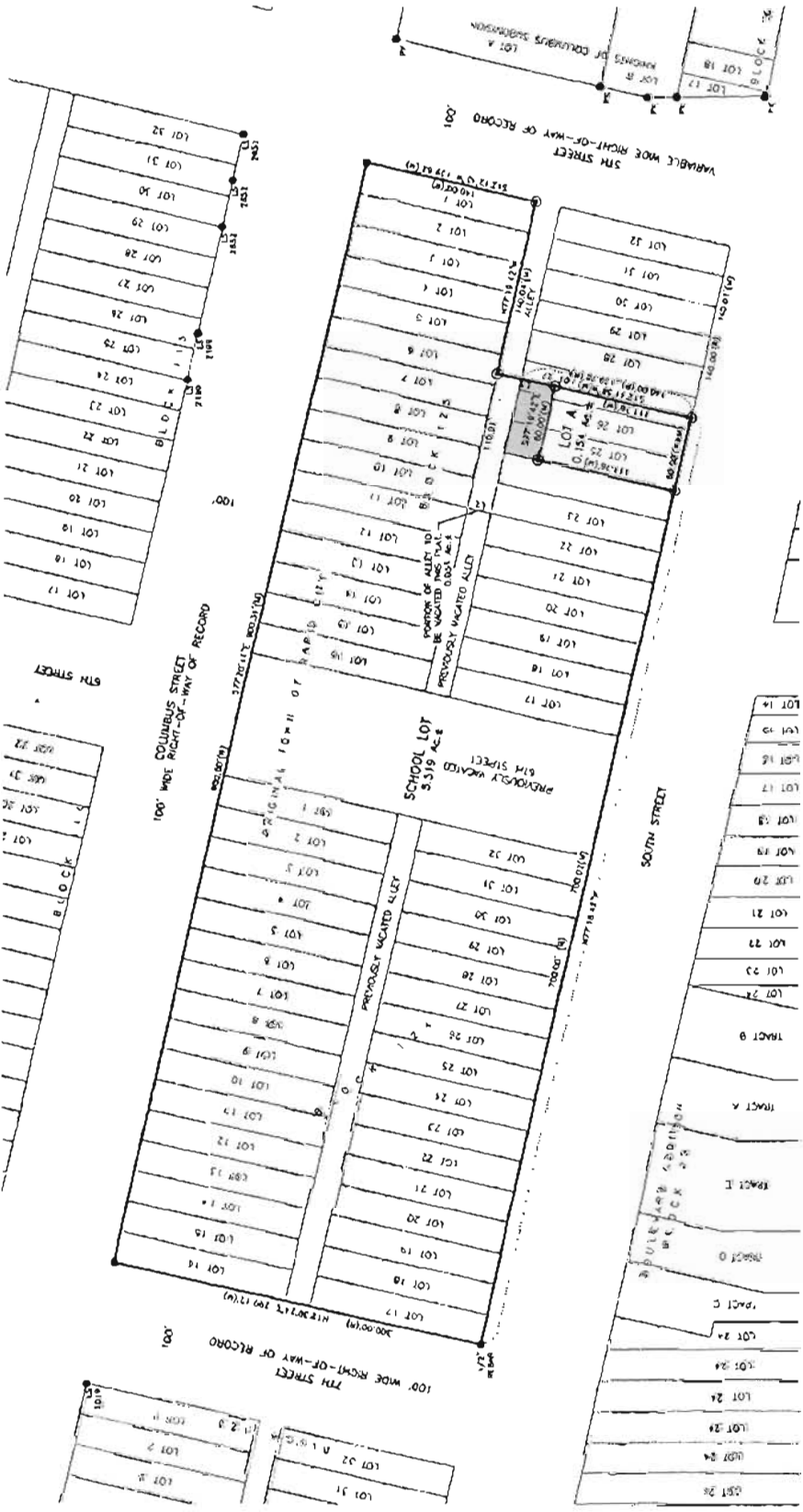
13CA013 SCHOOL LOT OF BLOCKS 124 AND 125, AND LOT A OF BLOCK 125,  
 13RZ024 ALL IN THE ORIGINAL TOWN OF RAPID CITY

(formerly Lots 1-32 and Vacated Alley of  
 Block 124, and Lots 1-26, W10' of Lot 27 and Vacated Alley of Block 125,  
 and Vacated 6th Street Lying adjacent to Blocks 124 and 125,  
 all in the Original Town of Rapid City)  
 LOCATED IN SECTION 1, T1N, R7E, B8M  
 RAPID CITY, PENNINGTON COUNTY, SOUTH DAKOTA

RECEIVED

SEP 13

RAPID CITY COMMUNITY DEVELOPMENT



**LEGEND:**  
 (1) Dimensions per order with survey cap method. Traverse - Assume 9311  
 (2) Dimensions per order with survey cap method. Traverse - Assume 9311  
 (3) Dimensions per order with survey cap method. Traverse - Assume 9311  
 (4) Dimensions per order with survey cap method. Traverse - Assume 9311  
 (5) Dimensions per order with survey cap method. Traverse - Assume 9311

**NOTE:**  
 THIS PLAT INCLUDES EASEMENTS, RIGHTS, AND INTERESTS IN REAL ESTATE. THE PLAT IS SUBJECT TO ALL EASEMENTS, RIGHTS, AND INTERESTS IN REAL ESTATE. THE PLAT IS SUBJECT TO ALL EASEMENTS, RIGHTS, AND INTERESTS IN REAL ESTATE. THE PLAT IS SUBJECT TO ALL EASEMENTS, RIGHTS, AND INTERESTS IN REAL ESTATE.



DATE	9/13/11
TIME	10:00 AM
BY	MARK
FOR	MARK

