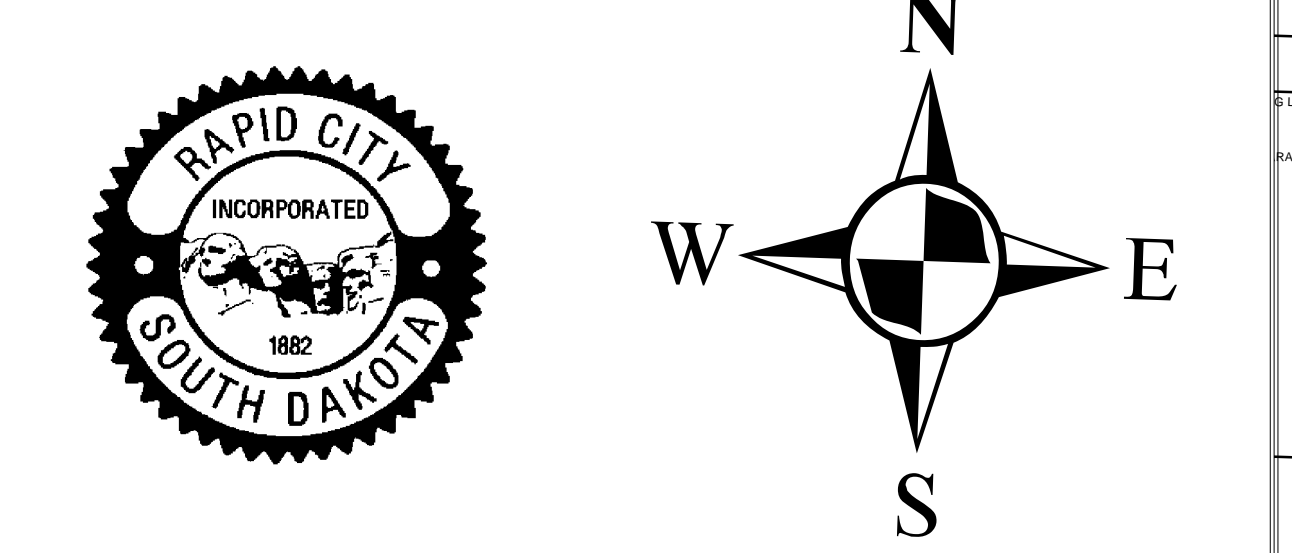
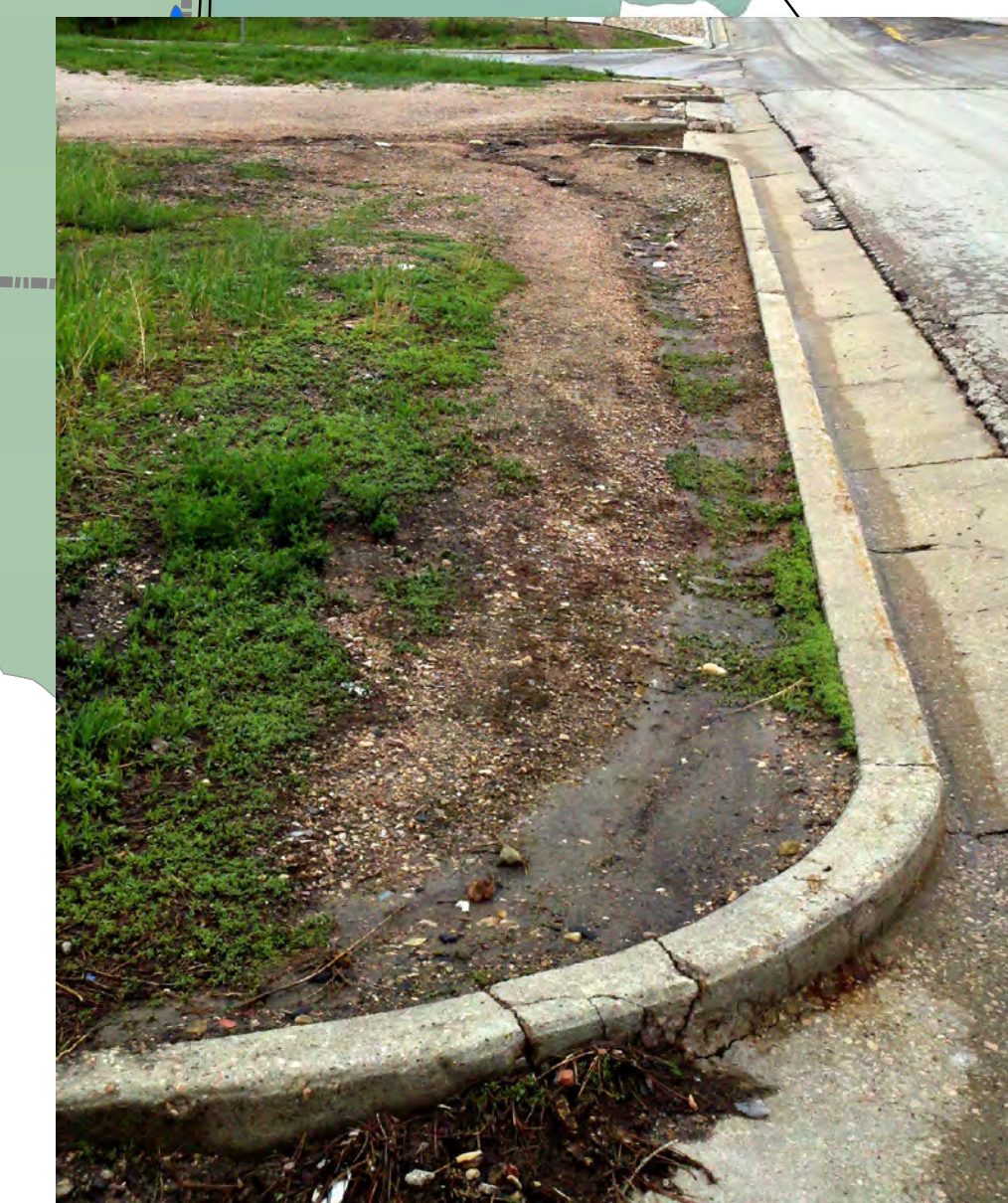
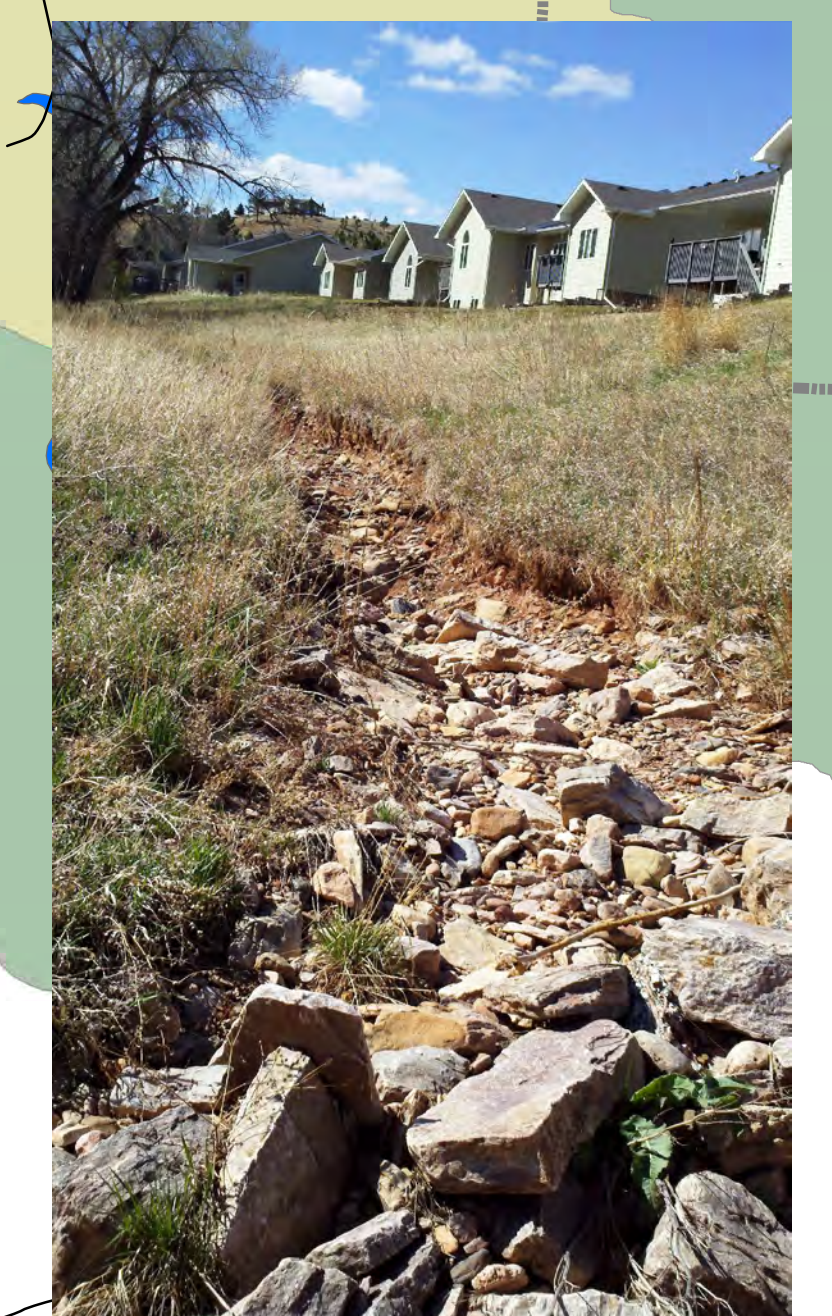
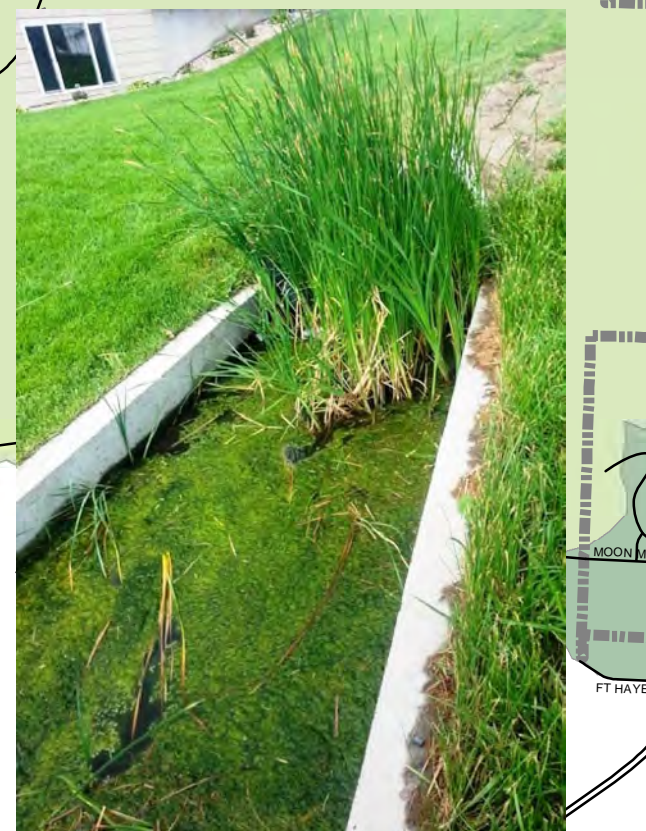
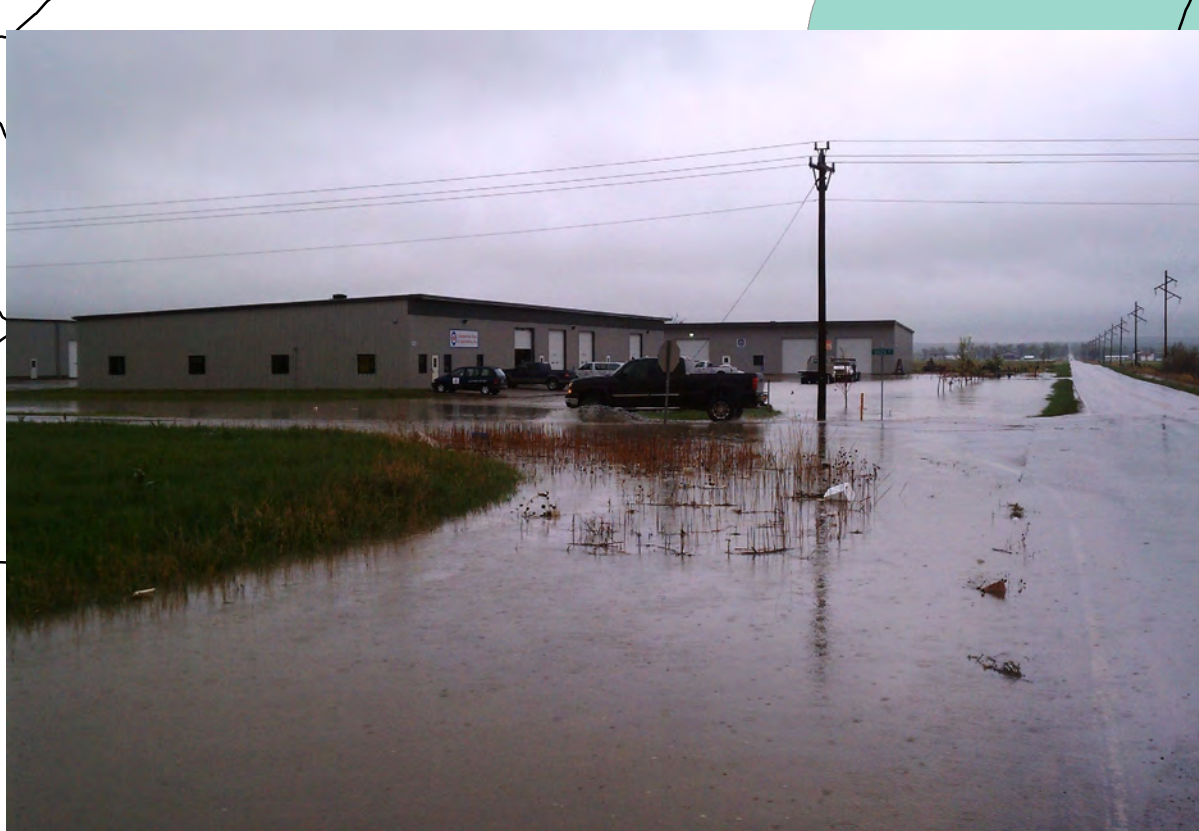
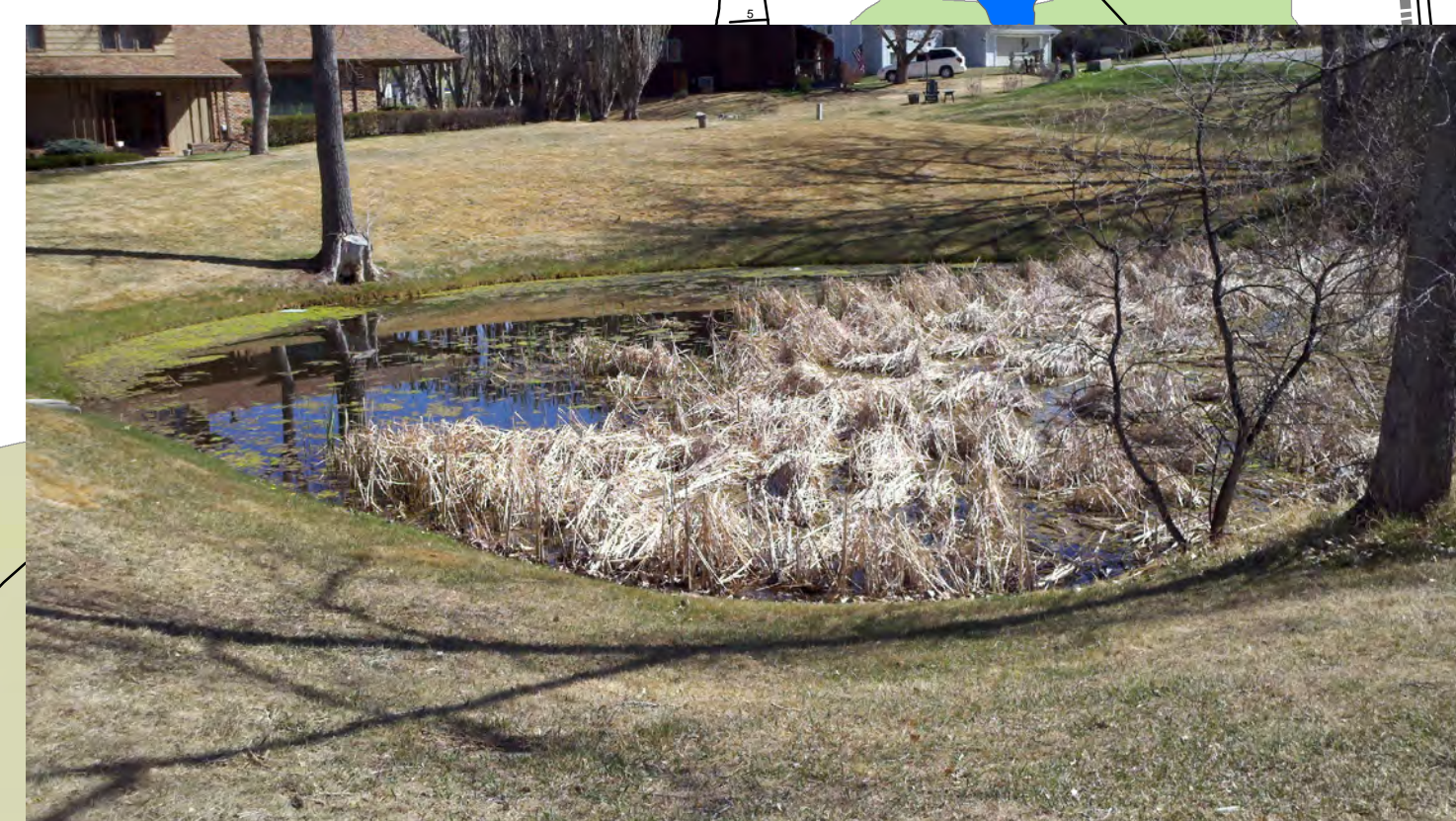
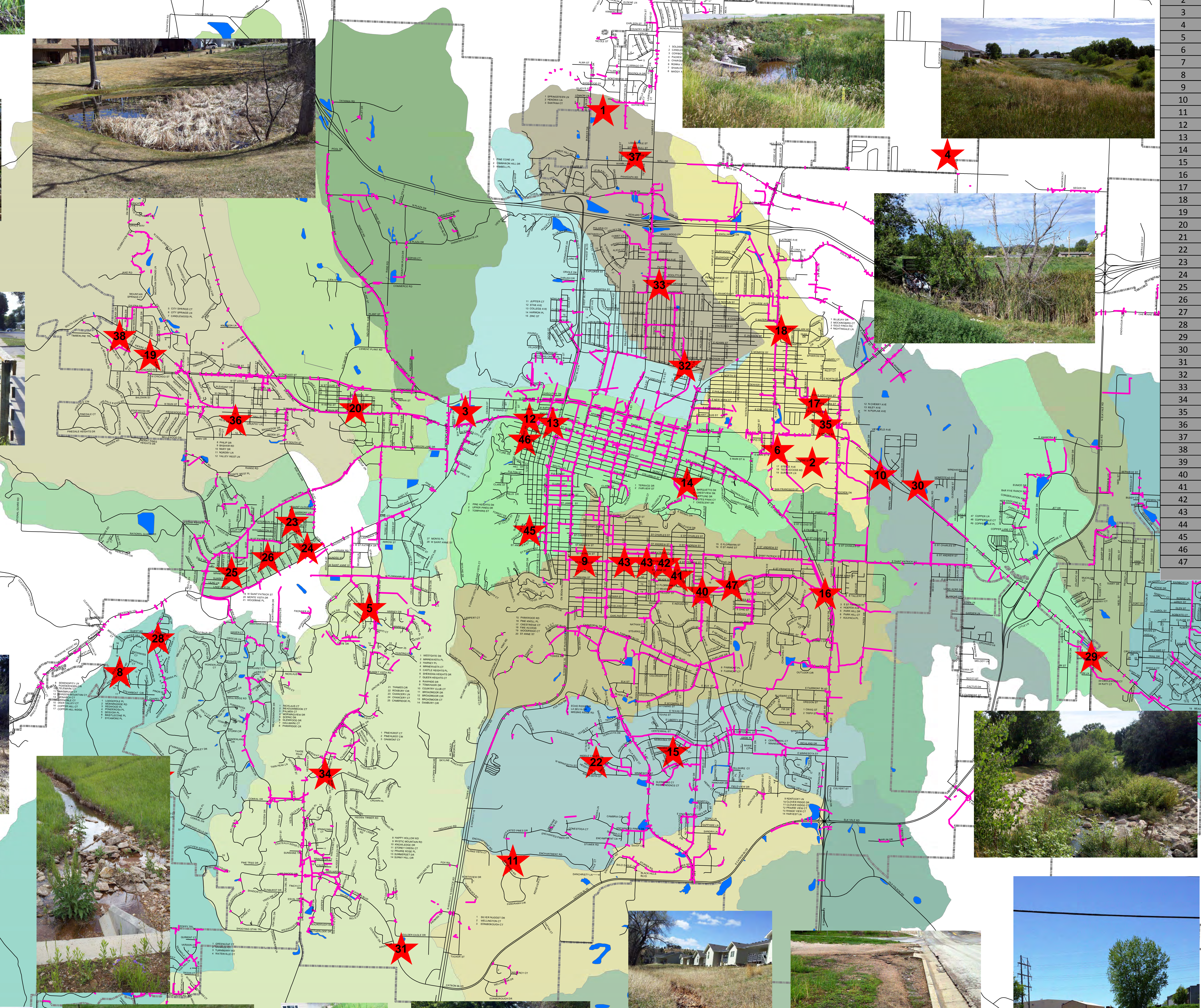


# PRELIMINARY LIST OF UNFUNDED DRAINAGE PROJECTS THROUGH OUT RAPID CITY NEIGHBORHOODS

Map Number	Project Name	Estimated Cost
1	Haines Avenue DBDP Element 306 Detention Cell	\$270,000.00
2	Centre St. Reconst., LaCrosse to Cambell	\$370,000.00
3	Jackson Blvd DBDP Element 23 Mt View Rd South	\$467,500.00
4	Box Elder Drainage Basin Design Plan	\$250,000.00
5	Arrowhead DBDP Element 251 Detention Cell	\$325,000.00
6	Knollwood Drainage Secondary Basin Outfall	\$1,000,000.00
7	North Glenn Place Drainage Improvements	\$9,850.00
8	Idlewild Box Culvert	\$150,000.00
9	Meade-Hawthorne Elements 47	\$950,000.00
10	Perrine Drainage Basin Elements 7 & 8	\$471,000.00
11	Ridgeview Road Drainage Improvements	\$57,500.00
12	12th Street Outfall	\$740,000.00
13	11th Street Outfall	\$925,000.00
14	E Quincy St and Myrtle Ave Street Improvements	\$44,000.00
15	S Robbinsdale Drainage Basin	\$410,000.00
16	Meade Hawthorne Elements 11, 12 & 13	\$660,000.00
17	Knollwood Element 7	\$660,000.00
18	Knollwood Detention Cell 300 Improvement	\$500,000.00
19	South Canyon/Lime Creek DBDP - Elements 64 & 65	\$250,000.00
20	Old Lime Creek DBDP - Detention Cells 256 & 257	\$100,000.00
21	Annual Detention Facility Maintenance	\$100,000.00
22	South Robbinsdale DBDP Detention Cell 304	\$110,000.00
23	Red Dale Drainage Basin Improvement - Priority 2	\$180,000.00
24	Red Dale Drainage Basin Improvements - Priority 1	\$2,070,000.00
25	Red Dale Drainage Basin Improvement - Priority 3	\$1,500,000.00
26	Red Dale Drainage Basin Imp - W St Pat & 38th	\$570,000.00
27	Red Dale Drainage Basin Imp - 38th, Jackson-Sunset	\$19,000.00
28	Chapel Valley Drainage Improvements	\$765,000.00
29	Race Track DBDP - Rapid Creek Outlet	\$360,000.00
30	Perrine DBDP Elements 13 and 210	\$240,000.00
31	Arrowhead Detention Cell 301	\$355,000.00
32	Haine Ave DBDP Elements 1,2,3 - Channel Maint	\$20,000.00
33	Haines Ave DBDP Element 50 - Wood Ave Box Culvert	\$975,000.00
34	Arrowhead DBDP Element 7 Maintenance	\$117,000.00
35	Knollwood Elements 3 & 5	\$3,950,000.00
36	South Canyon/Lime Creek DBDP - Element 60	\$355,000.00
37	Haines Ave DBDP Element 24 - Wambli Dr Crossing	\$240,000.00
38	South Canyon/Lime Creek DBDP - Element 66	\$270,000.00
39	Upstream Elm Ave Drainage Improvements - Phase 1	\$1,300,000.00
40	Upstream Elm Ave Drainage Improvements - Phase 2	\$1,925,000.00
41	Upstream Elm Ave Drainage Improvements - Phase 3	\$860,000.00
42	Upstream Elm Ave Drainage Improvements - Phase 4	\$1,180,000.00
43	Upstream Elm Ave Drainage Improvements - Phase 5	\$1,095,000.00
44	Deadwood Ave. Drainage Channel Outlet	\$520,000.00
45	St. Charles & 11th St Recondition	\$185,000.00
46	12th & Quincy St Recondition	\$201,000.00
47	Meade Hawthorne Element 15, Meade Channel	\$165,000.00
TOTAL		\$28,236,850.00



- ★ DRAINAGE PROJECTS
- Drainage Channels Pipelines and Detention Ponds
- Rapid City Limits
- Arrowhead Drainage Basin
- County Heights Drainage Basin
- Deadwood Avenue Drainage Basin
- Downtown Drainage Basin
- Haines Avenue Drainage Basin
- Jackson Boulevard
- Knollwood Drainage Basin
- Landfill Drainage Basin
- Meade Hawthorn Drainage Basin
- Morningside Drainage Basin
- Old Lime Creek Drainage Basin
- Perrine Drainage Basin
- Race Track Drainage Basin
- Red Dale Drainage Basin
- Red Rock Drainage Basin
- S Highway 79 Drainage Basin
- S Highway 79 N Drainage Basin
- S Highway 79 S Drainage Basin
- South Canyon Drainage Basin
- South Robbinsdale Drainage Basin
- South Truck Route Drainage Basin
- Unnamed Tributary Drainage Basin
- Wonderland Drive Drainage Basin