

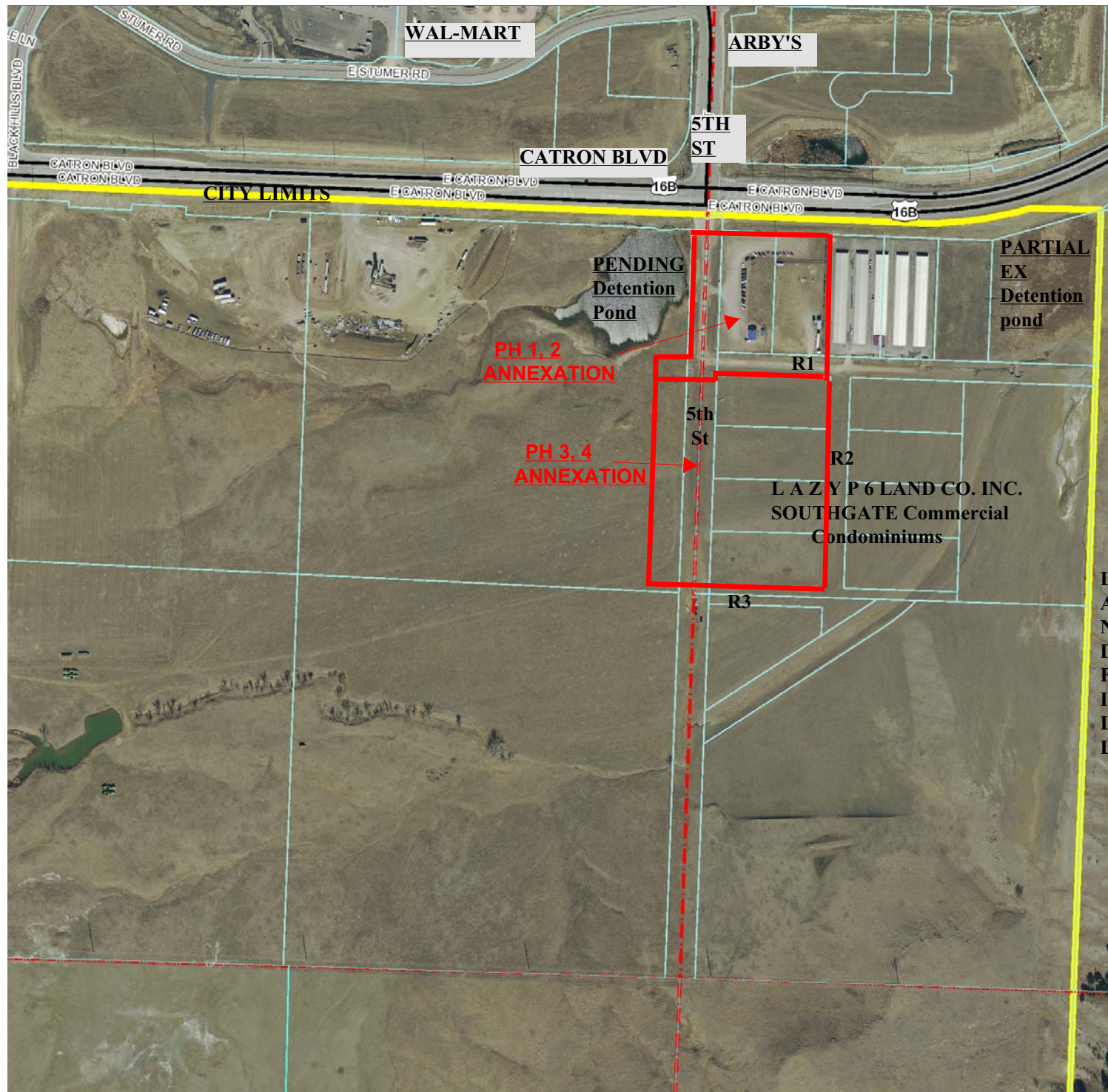
EXHIBIT B: PHASING & ANNEXATION SCHEDULE FOR

2 Pages

AN AGREEMENT BETWEEN THE CITY OF RAPID CITY AND LAZY P6 LAND COMPANY, INC FOR OVERSIZE STREET IMPROVEMENTS, DRAINAGE STRUCTURES, WATER MAIN, AND SEWER MAIN FOR OVERSIZE PROJECTS

SOUTHGATE COMMERCIAL CONDOMINIUMS AND SOUTHGATE CONDOMINIUMS, PHASE II

REIMBURSABLE PHASE ID	MAP CODE
1: UTILITY EXTENSION; 5TH ST TO R1; NE SEWER	Ph 1
2: PAVING; 5TH ST TO R1	Ph 2
3: UTILITY EXTENSION 5TH ST R1 TO R3	Ph 3
4: PAVING: 5TH ST R1 TO R3	Ph 4



- Roads**
- Interstate
 - US highway
 - SD highway
 - County highway
 - Main road
 - Minor arterial
 - Collector
 - Ramp
 - Paved road
 - Unpaved road
 - Unimproved road
 - Trail
 - FS Highway
 - Airport Runway
 - Not yet coded
- Lot Lines**
- <Null>
 - Lot Line
 - Parcel Line
- Township/Section Lines**
- 0
 - 7
- County Line

LANDFILL

**EXHIBIT B
OVERSIZE
AGREEMENT
Page 2 of 2**

 Scale 1: 4,800

Map Notes: