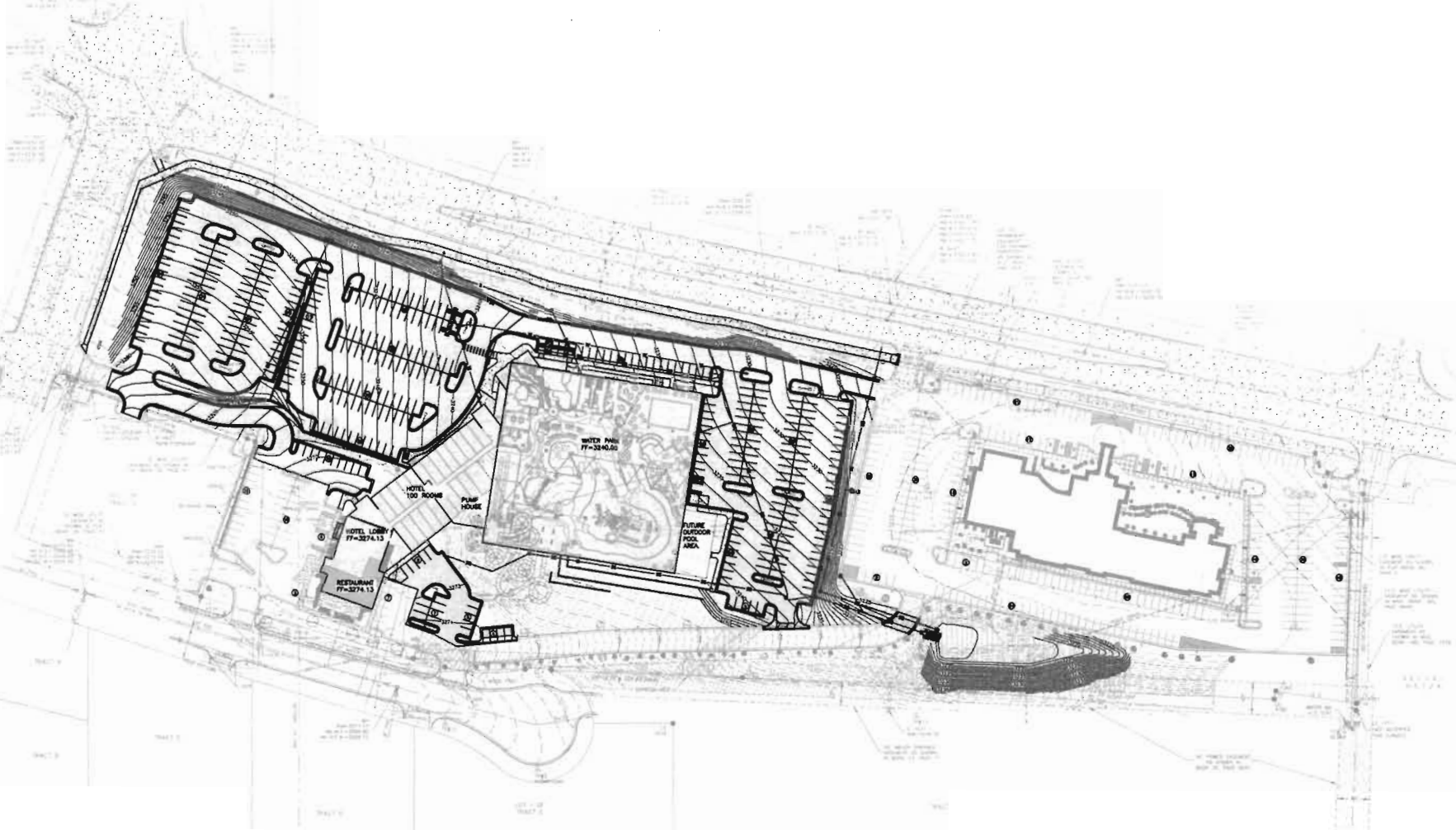
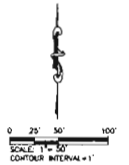


PARKING CALCULATION:

• HILTON SITE:	248 PREVIOUSLY REQUIRED
• WATER PARK:	308 REQUIRED
• NEW 100 ROOM HOTEL:	100 REQUIRED
• 1/2 3500 FT ² RESTAURANT:	~38 REQUIRED
TOTAL COMPLEX:	694 SPACES REQUIRED
SPACES PROVIDED:	747 SPACES PROVIDED



RENNER & ASSOCIATES, LLC.
 ARCHITECTS
 1000 S. DAKOTA AVE. SUITE 200
 SIOUX FALLS, SD 57105
 (605) 336-1111



Scale: 1" = 50'
 Overall Size: 24" x 36"
 Project No: 13PD034
 Date: 12/15/11

Prepared by: J. BENTON

RIPLIN RAPIDS WATER PARK
 LOTS 14 AND 28, BLOCK 1, EAST HALLS BUSINESS CENTER
 SUBDIVISION AND TRACT MAP 18, HALLS BUSINESS CENTER #2
 LOCATED IN THE NORTH EAST QUARTER OF SECTION 12, T12N R14E
 RANGE 12E, TOWNSHIP 12N, RANGE 12E, COUNTY OF SIOUX, SOUTH DAKOTA

Location:
 1000 S. DAKOTA AVE. SUITE 200
 SIOUX FALLS, SD 57105

Project No: 13PD034

Overall:
 24" x 36"
 Parking Plan