

# PLAT OF LOT H4

SHOWING A TRACT OF LAND TO BE ACQUIRED FOR HIGHWAY PURPOSES IN THE SE 1/4 OF THE SE 1/4 OF SECTION 21, TOWNSHIP 2 NORTH - RANGE 7 EAST OF THE BHM FOR CONSTRUCTION OF PROJECT NO. ST08-1701 - CIP #50398

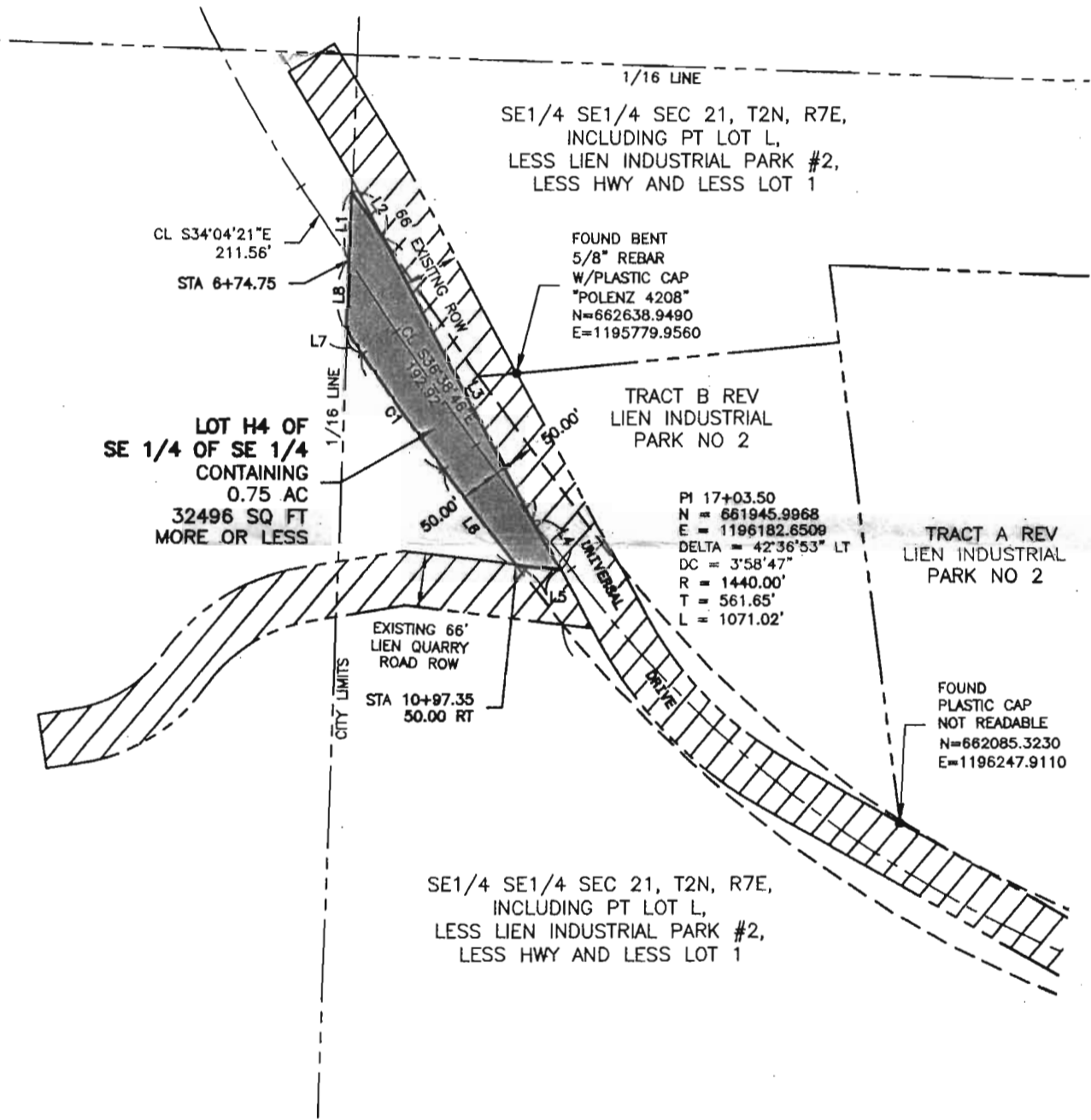


PENNINGTON COUNTY, SOUTH DAKOTA

- LEGEND**
- FOUND SURVEY MONUMENT
  - ▨ EXISTING ROW
  - ROW PLATTED THIS PLAT

NUMBER	DIRECTION	DISTANCE
L1	N02°04'44"E	84.76'
L2	S34°04'21"E	69.31'
L3	S28°02'58"E	390.66'
L4	S28°02'58"E	71.33'
L5	N83°01'44"W	54.34'
L6	N36°38'48"W	148.42'
L7	N34°04'21"W	35.28'
L8	N02°04'44"E	84.76'

NUMBER	DELTA ANGLE	CHORD BEARING	R (FT)	L (FT)	LC (FT)
C1	02°34'25"	N35°21'34"W	3845.00	172.71	172.70



**RECEIVED**  
 AUG 08 2013  
 Rapid City Community Planning  
 & Development Services

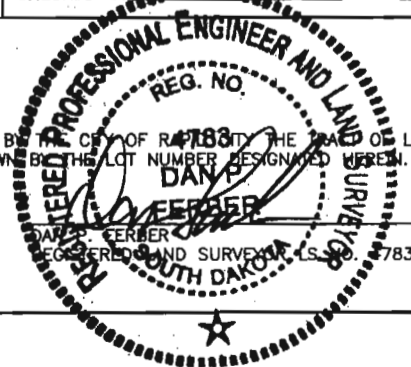
**NOTE:**  
 COORDINATES SHOWN ARE BASED ON SOUTH DAKOTA STATE PLANE COORDINATE SYSTEM, SOUTH ZONE NAD83(96)

DRAWN BY DRS DATE 07-21-08  
 CHECKED BY DAN FERBER DATE 07-21-08

### SURVEYOR'S CERTIFICATE

I, DAN P. FERBER, REGISTERED LAND SURVEYOR, NO. 4783 IN AND FOR THE STATE OF SOUTH DAKOTA, DO HEREBY CERTIFY THAT AS ORDERED BY THE CITY OF RAPID CITY THE TRACT OF LAND AS SHOWN ON THIS PLAT HAS BEEN SURVEYED AT MY DIRECTION AND UNDER MY CONTROL, AND SUCH TRACT OF LAND SHALL BE HEREAFTER KNOWN BY THE LOT NUMBER DESIGNATED HEREIN. THE LOCATION AND DIMENSIONS OF THE TRACT ARE SHOWN ON THIS PLAT.

IN WITNESS WHEREOF, I HAVE SET MY HAND AND SEAL THIS 21<sup>st</sup> DAY OF July A.D., 2008



### OFFICE OF REGISTER OF DEEDS

STATE OF SOUTH DAKOTA COUNTY OF PENNINGTON : SS # 19687 \$ 10.00  
 FILED FOR RECORD THE 18 DAY OF December A.D., 2008, AT 11:00 A.M., AND RECORDED IN BOOKS OF PLATS 11 ON PAGE 188 THEREIN.  
 REGISTER OF DEEDS Donna Maye BY Darlene Felt DEPUTY