

RECEIVED

JUN 26 2013

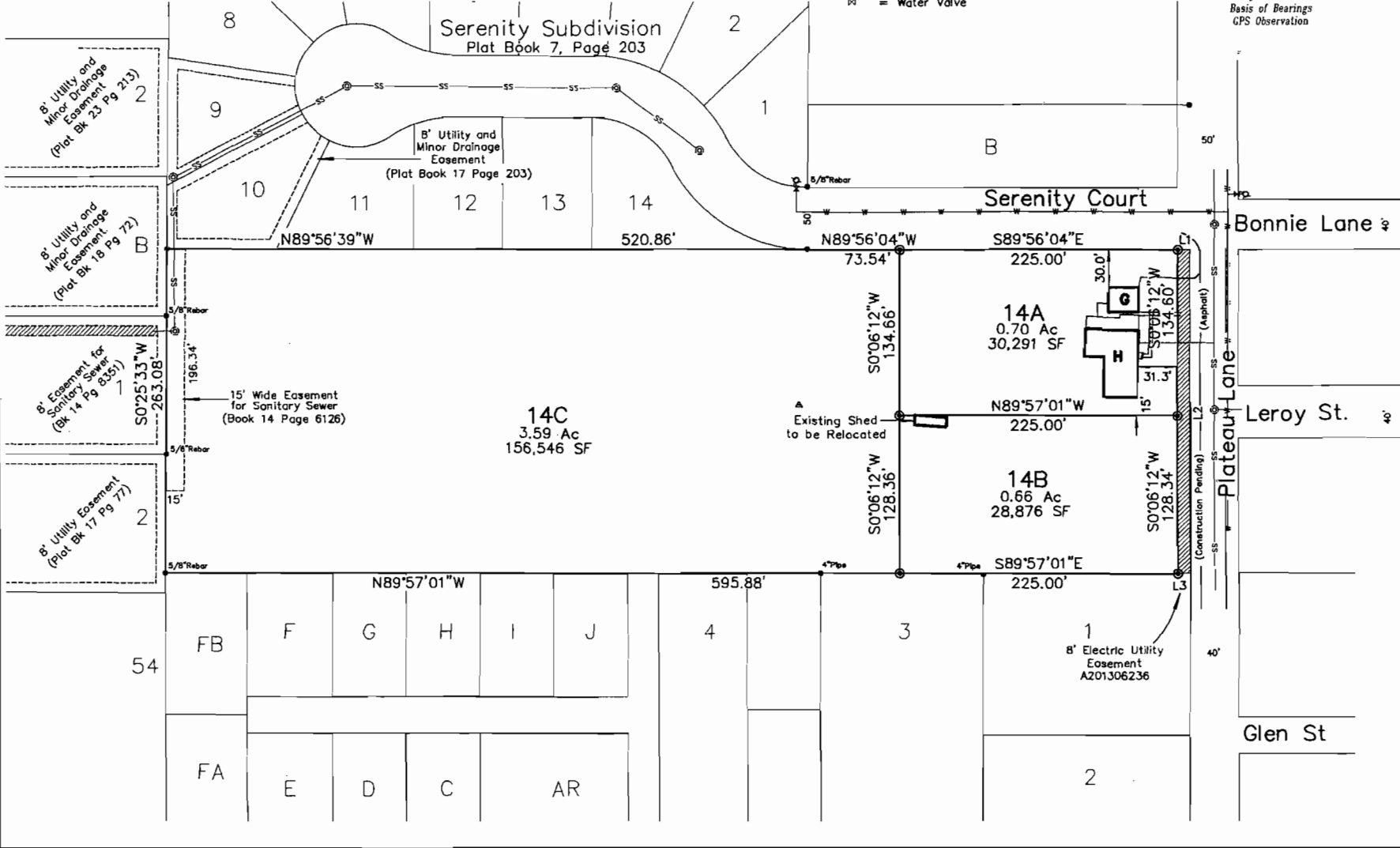
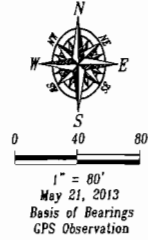
All Utilities shown are from utility sketches and from visible appurtenances.

Rapid City Community Planning & Development Services

NUM	BEARING	DISTANCE
L1	S89°56'04"E	9.89'
L2	N0°04'43"E	262.93'
L3	S89°57'01"E	10.00'

LEGEND

- = Found Survey Monument LS1771 or as noted
- ⊙ = Set Rebar with cap marked "RW Fisk 6565"
- △ = Control Point
- ⊕ = Sanitary Sewer Manhole
- ⊙ = Fire Hydrant
- ⊕ = Water Valve



Fisk Land Surveying & Consulting Engineers, Inc.
 1022 Main Street (P.O. Box 8154)
 Rapid City, South Dakota 57709
 (605) 341-1112 (x)

Proposed Plat
 Lots 14A, 14B & 14C
 Plateau Subdivision
 Rapid City, South Dakota

Surveyed by: ML/CD
Date 4/23/13
Drawn by: RWF/BL
Checked by: JF
Revisions 5/31/13 6/25/13 Utilities & Easements
Proposed Plat 1 of 1
Project No. 13-05-02

PRELIMINARY