

SAFeway SHOPPING CENTER SUBDIVISION LEGAL DESCRIPTION

Lot 1 - Section 2 and 3 of T12N R10E S13E
 - PART OF SA. 13-07-00-00-0000-0
 15.00 AC.
 MORE OR LESS THAN SHOWN

AND TRACT A TO BE PLATTED AS FOLLOWS:

Beginning at the southeast corner of the way and extending east and thence west and north and then south to the place of
 closing;

THENCE WEST 80.00 FEET, NORTHEASTLY ALONG THE SECTION LINE OF SA. 13-07-00-00-0000-0 TO THE CORNER OF A
 QUARTER SECTION OF 160.00 FEET, A BEARING OF 100° 00' 00" W, A DISTANCE OF 100.00 FEET TO THE CORNER OF A QUARTER
 SECTION OF 160.00 FEET;

THENCE SOUTH 80.00 FEET, WESTLY ALONG THE SECTION LINE OF SA. 13-07-00-00-0000-0 A DISTANCE OF 80.00 FEET;

THENCE WEST 80.00 FEET, NORTHEASTLY ALONG THE SECTION LINE OF SA. 13-07-00-00-0000-0 TO THE CORNER OF A QUARTER
 SECTION OF 160.00 FEET, A BEARING OF 100° 00' 00" W, A DISTANCE OF 100.00 FEET TO THE CORNER OF A QUARTER
 SECTION OF 160.00 FEET TO THE SECTION CORNER OF SA. 13-07-00-00-0000-0;

THENCE SOUTH 80.00 FEET, WESTLY ALONG THE SECTION LINE OF SA. 13-07-00-00-0000-0 A DISTANCE OF 80.00 FEET;

THENCE WEST 80.00 FEET, NORTHEASTLY ALONG THE SECTION LINE OF SA. 13-07-00-00-0000-0 TO THE CORNER OF A QUARTER
 SECTION OF 160.00 FEET, A BEARING OF 100° 00' 00" W, A DISTANCE OF 100.00 FEET TO THE CORNER OF A QUARTER
 SECTION OF 160.00 FEET TO THE SECTION CORNER OF SA. 13-07-00-00-0000-0;

THENCE SOUTH 80.00 FEET, WESTLY ALONG THE SECTION LINE OF SA. 13-07-00-00-0000-0 A DISTANCE OF 80.00 FEET;

THENCE WEST 80.00 FEET, NORTHEASTLY ALONG THE SECTION LINE OF SA. 13-07-00-00-0000-0 TO THE CORNER OF A QUARTER
 SECTION OF 160.00 FEET, A BEARING OF 100° 00' 00" W, A DISTANCE OF 100.00 FEET TO THE CORNER OF A QUARTER
 SECTION OF 160.00 FEET TO THE SECTION CORNER OF SA. 13-07-00-00-0000-0;

AND TRACT A TO BE PLATTED AS FOLLOWS:

Beginning at the southeast corner of the way and extending east and thence west and north and then south to the place of
 closing;

THENCE WEST 80.00 FEET, NORTHEASTLY ALONG THE SECTION LINE OF SA. 13-07-00-00-0000-0 TO THE CORNER OF A
 QUARTER SECTION OF 160.00 FEET, A BEARING OF 100° 00' 00" W, A DISTANCE OF 100.00 FEET TO THE CORNER OF A QUARTER
 SECTION OF 160.00 FEET;

THENCE SOUTH 80.00 FEET, WESTLY ALONG THE SECTION LINE OF SA. 13-07-00-00-0000-0 A DISTANCE OF 80.00 FEET;

THENCE WEST 80.00 FEET, NORTHEASTLY ALONG THE SECTION LINE OF SA. 13-07-00-00-0000-0 TO THE CORNER OF A QUARTER
 SECTION OF 160.00 FEET, A BEARING OF 100° 00' 00" W, A DISTANCE OF 100.00 FEET TO THE CORNER OF A QUARTER
 SECTION OF 160.00 FEET TO THE SECTION CORNER OF SA. 13-07-00-00-0000-0;

THENCE SOUTH 80.00 FEET, WESTLY ALONG THE SECTION LINE OF SA. 13-07-00-00-0000-0 A DISTANCE OF 80.00 FEET;

THENCE WEST 80.00 FEET, NORTHEASTLY ALONG THE SECTION LINE OF SA. 13-07-00-00-0000-0 TO THE CORNER OF A QUARTER
 SECTION OF 160.00 FEET, A BEARING OF 100° 00' 00" W, A DISTANCE OF 100.00 FEET TO THE CORNER OF A QUARTER
 SECTION OF 160.00 FEET TO THE SECTION CORNER OF SA. 13-07-00-00-0000-0;

AND TRACT A TO BE PLATTED AS FOLLOWS:

Beginning at the southeast corner of the way and extending east and thence west and north and then south to the place of
 closing;

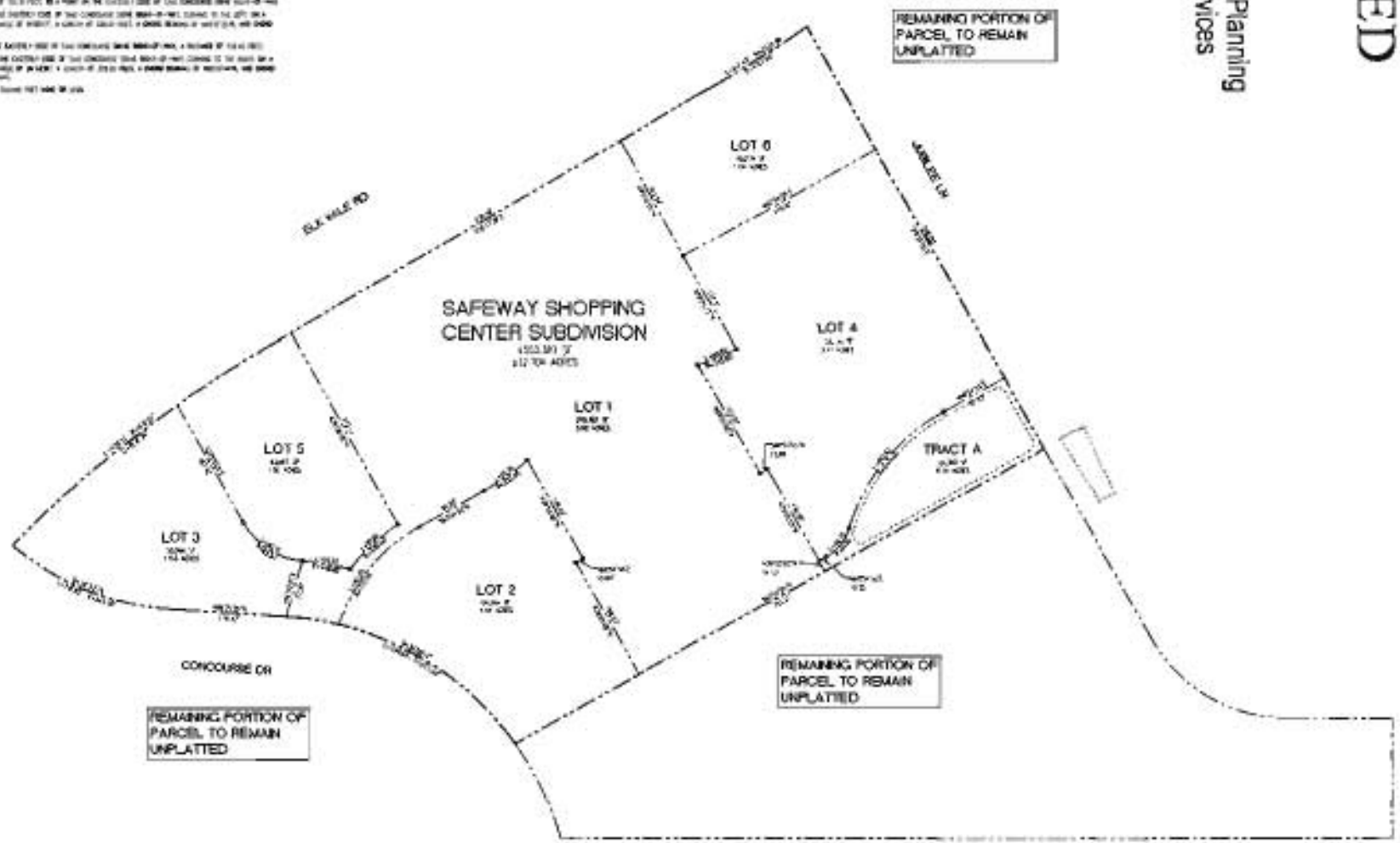
THENCE WEST 80.00 FEET, NORTHEASTLY ALONG THE SECTION LINE OF SA. 13-07-00-00-0000-0 TO THE CORNER OF A
 QUARTER SECTION OF 160.00 FEET, A BEARING OF 100° 00' 00" W, A DISTANCE OF 100.00 FEET TO THE CORNER OF A QUARTER
 SECTION OF 160.00 FEET;

THENCE SOUTH 80.00 FEET, WESTLY ALONG THE SECTION LINE OF SA. 13-07-00-00-0000-0 A DISTANCE OF 80.00 FEET;

THENCE WEST 80.00 FEET, NORTHEASTLY ALONG THE SECTION LINE OF SA. 13-07-00-00-0000-0 TO THE CORNER OF A QUARTER
 SECTION OF 160.00 FEET, A BEARING OF 100° 00' 00" W, A DISTANCE OF 100.00 FEET TO THE CORNER OF A QUARTER
 SECTION OF 160.00 FEET TO THE SECTION CORNER OF SA. 13-07-00-00-0000-0;

THENCE SOUTH 80.00 FEET, WESTLY ALONG THE SECTION LINE OF SA. 13-07-00-00-0000-0 A DISTANCE OF 80.00 FEET;

THENCE WEST 80.00 FEET, NORTHEASTLY ALONG THE SECTION LINE OF SA. 13-07-00-00-0000-0 TO THE CORNER OF A QUARTER
 SECTION OF 160.00 FEET, A BEARING OF 100° 00' 00" W, A DISTANCE OF 100.00 FEET TO THE CORNER OF A QUARTER
 SECTION OF 160.00 FEET TO THE SECTION CORNER OF SA. 13-07-00-00-0000-0;



RECEIVED

JUN 24 2013

Rapid City Community Planning
 & Development Services



PRELIMINARY SUBDIVISION PLAN
SAFeway STORE #3166
 CORNER OF ELK HOLE ROAD &
 CONCOURSE DRIVE
 RAPID CITY, SOUTH DAKOTA

SCALE: 1" = 100'

P-1