

**Fisk Land Surveying & Consulting, Inc.**  
 1022 Main Street (P.O. Box 8154)  
 Rapid City, South Dakota 57709  
 (605) 348-1538  
 (605) 341-1112 (fx)

**Driveway Plan**

Lots 1 and 2 of Lot Y of Block 2  
 Strathavon Addition Revised  
 Pennington County, South Dakota

Surveyed by:  
ML

Date  
4/12

Drawn by:  
RWF,CD

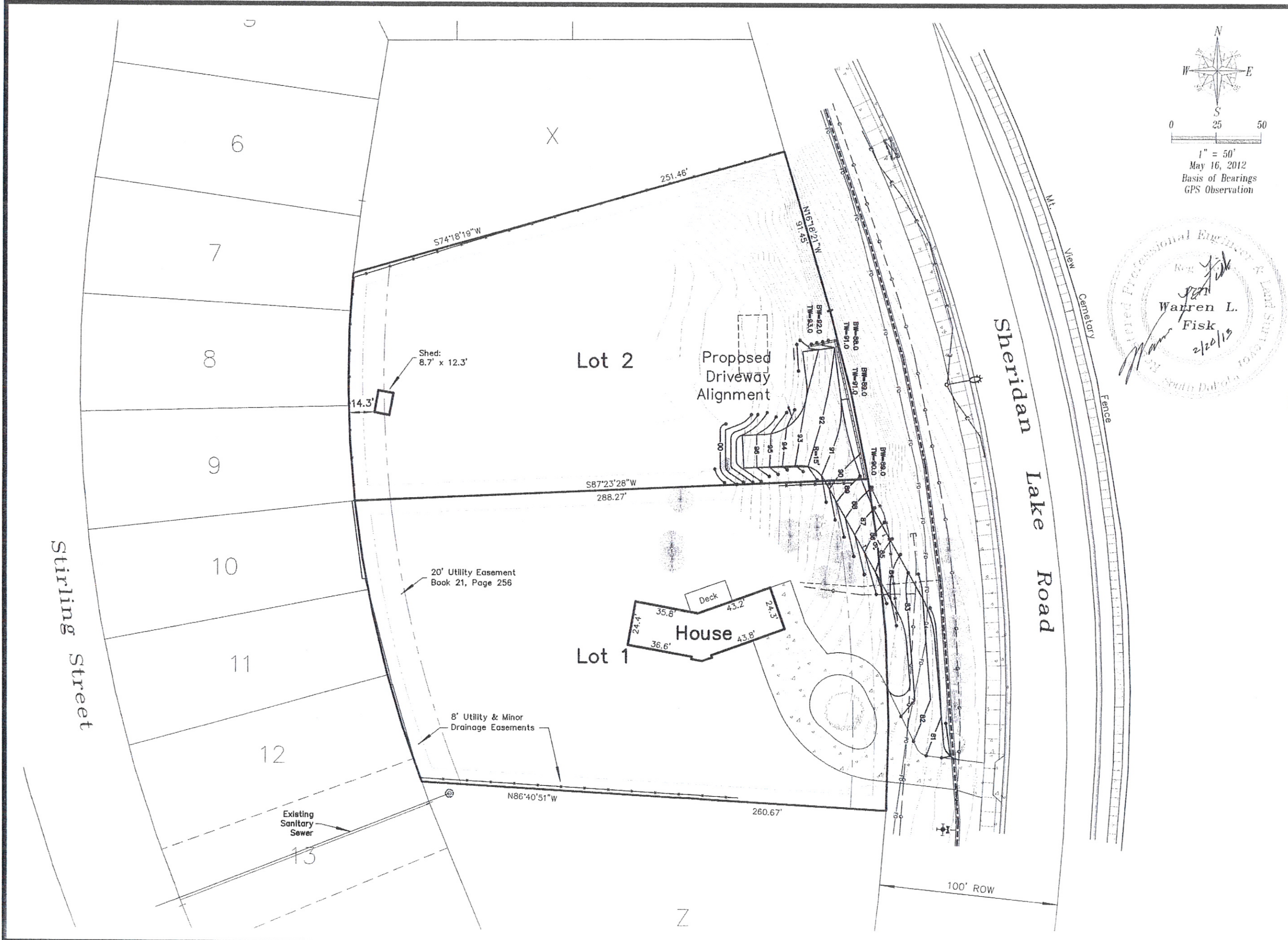
Checked by:  
JF

Revisions

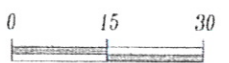
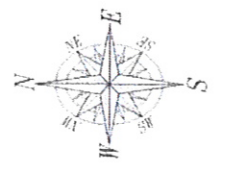
Proposed Drive Location

1  
of  
2

Project No.  
12-04-03

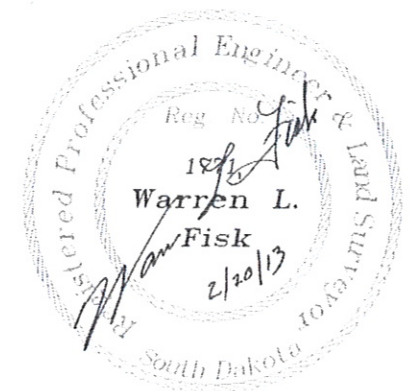
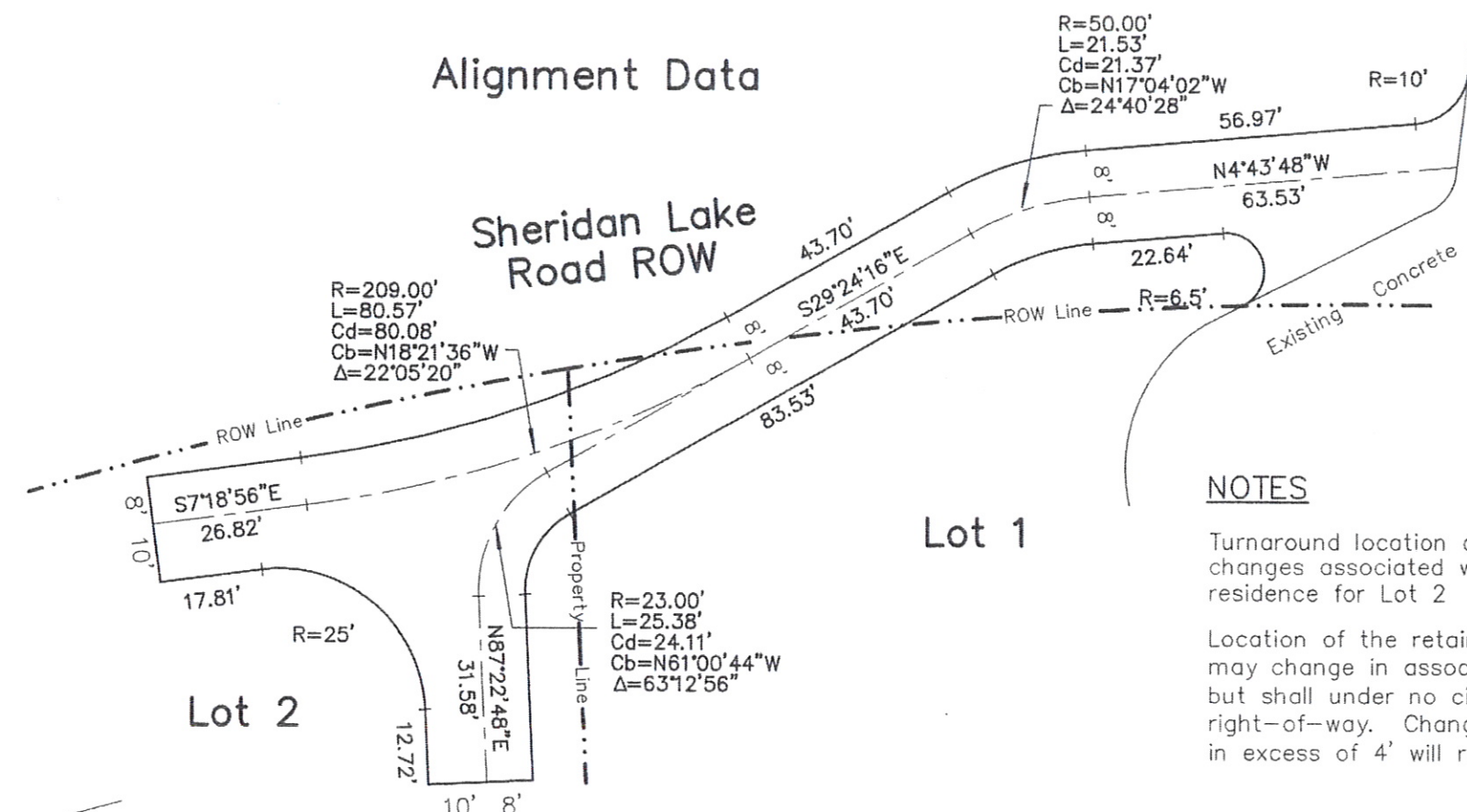






1" = 30'  
 May 16, 2012  
 Rev. September 4, 2012  
 Basis of Bearings  
 GPS Observation

### Alignment Data

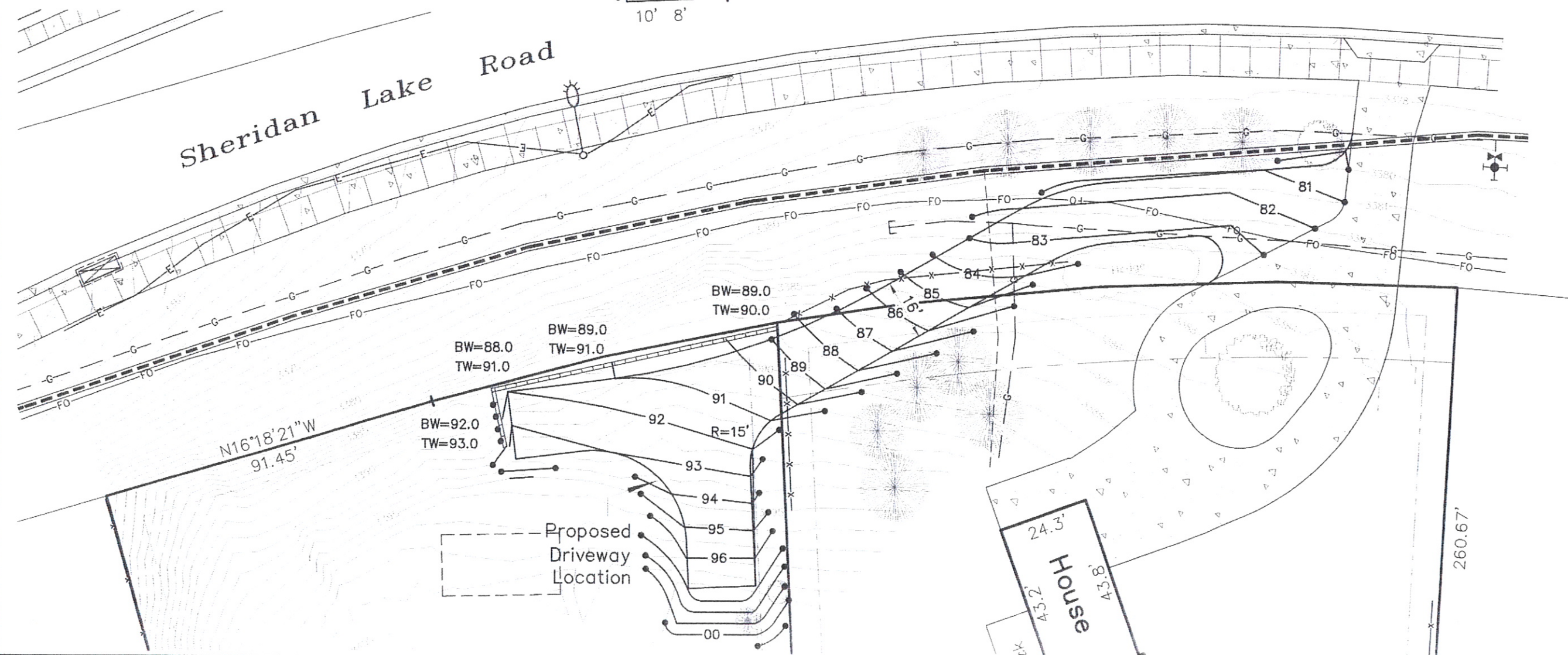


### NOTES

Turnaround location and orientation subject to minor changes associated with construction of proposed residence for Lot 2

Location of the retaining wall as shown (3' Max ht.) may change in association with the drive (see above) but shall under no circumstances be located within right-of-way. Changes which would require wall heights in excess of 4' will require additional engineering.

### Grading Plan



Fisk Land Surveying & Consulting, Inc.  
 1022 Main Street, P.O. Box 8154  
 Rapid City, South Dakota 57709  
 (605) 348-1538  
 (605) 341-1112 (fx)

### Driveway Plan

Lots 1 and 2 of Lot Y of Block 2  
 Strathavon Addition Revised  
 Pennington County, South Dakota

Surveyed by:  
ML

Date  
4/12

Drawn by:  
RWF, CD

Checked by:  
JF

Revisions

Proposed Access

2  
of  
2

Project No.  
12-04-03