

RECEIVED

MAY 17 2013

RAPID CITY COMMUNITY PLANNING & DEVELOPMENT SERVICES

CITY OF RAPID CITY

Subject:
S17/2013 SUBDIVISION LAYOUT PLAN

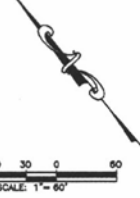
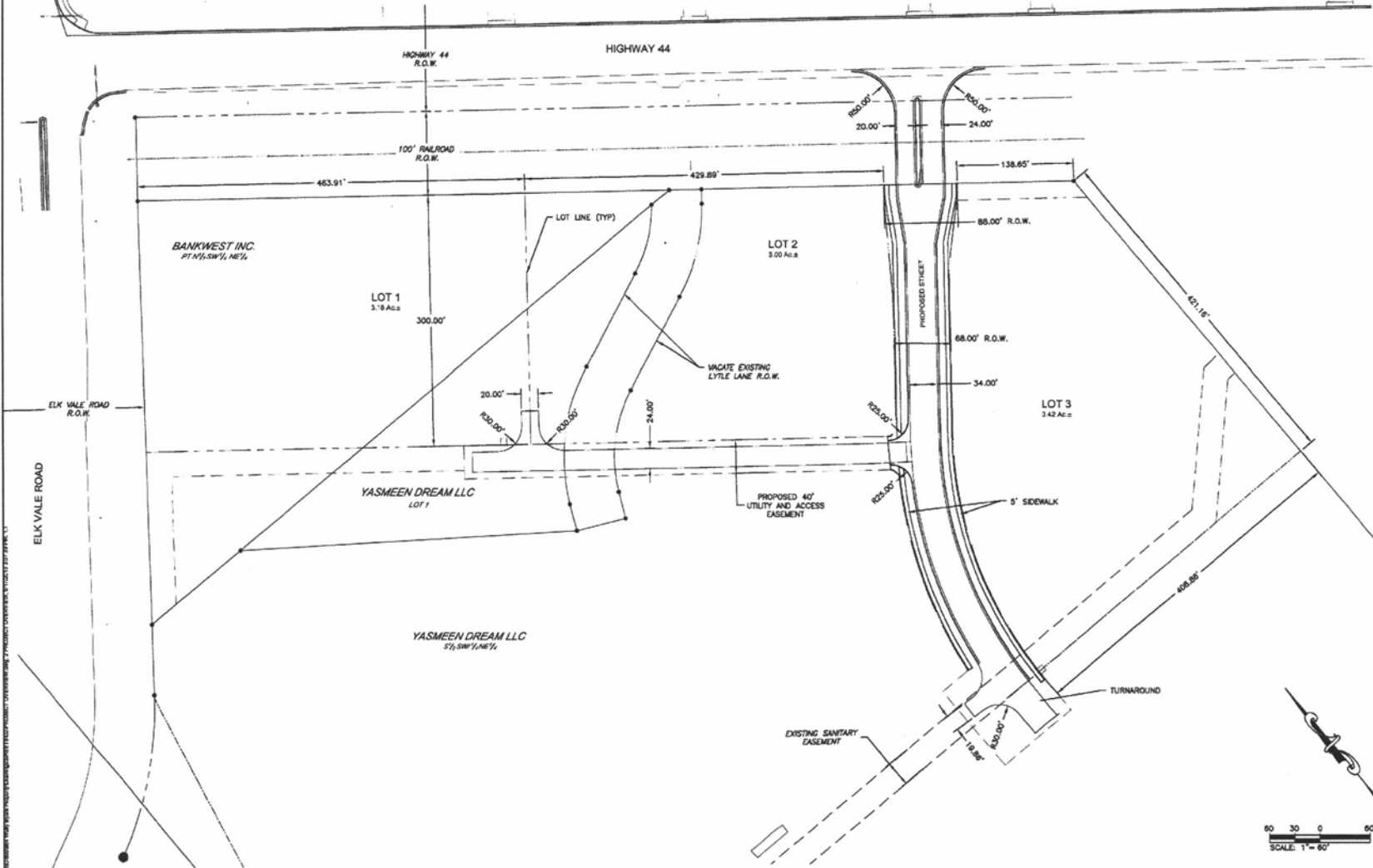
There are released for general information all applicable government regulations, stipulations, design criteria and engineering standards. The City of Rapid City does not verify the suitability, accuracy or completeness of the plans or design, which are the responsibility of the engineer of record. All necessary permits shall be obtained prior to construction of the proposed public improvements.

By: COFFY KENNEDY Date: _____
Comments: _____

Revision: _____

Internal Job No. 13-0056 Design By: HES Drawn By: LTC/AMW
Managed By: KENNEDY & ASSOC. LLC, LLC Survey Date: _____

PRELIMINARY FOR REVIEW ONLY



DREAM DESIGN INTERNATIONAL, INC.
ENGINEERING, ARCHITECTURE,
LAND PLANNING, CONSTRUCTION ADMINISTRATION
558 KANSAS CITY STREET, RAPID CITY, SD 57701
PHONE: (605) 346-0338 FAX: (605) 346-0345 WWW.DREAMDESIGNINC.COM

ORCHARD MEADOWS
RAPID CITY, SOUTH DAKOTA

Sheet Name:
PROJECT OVERVIEW