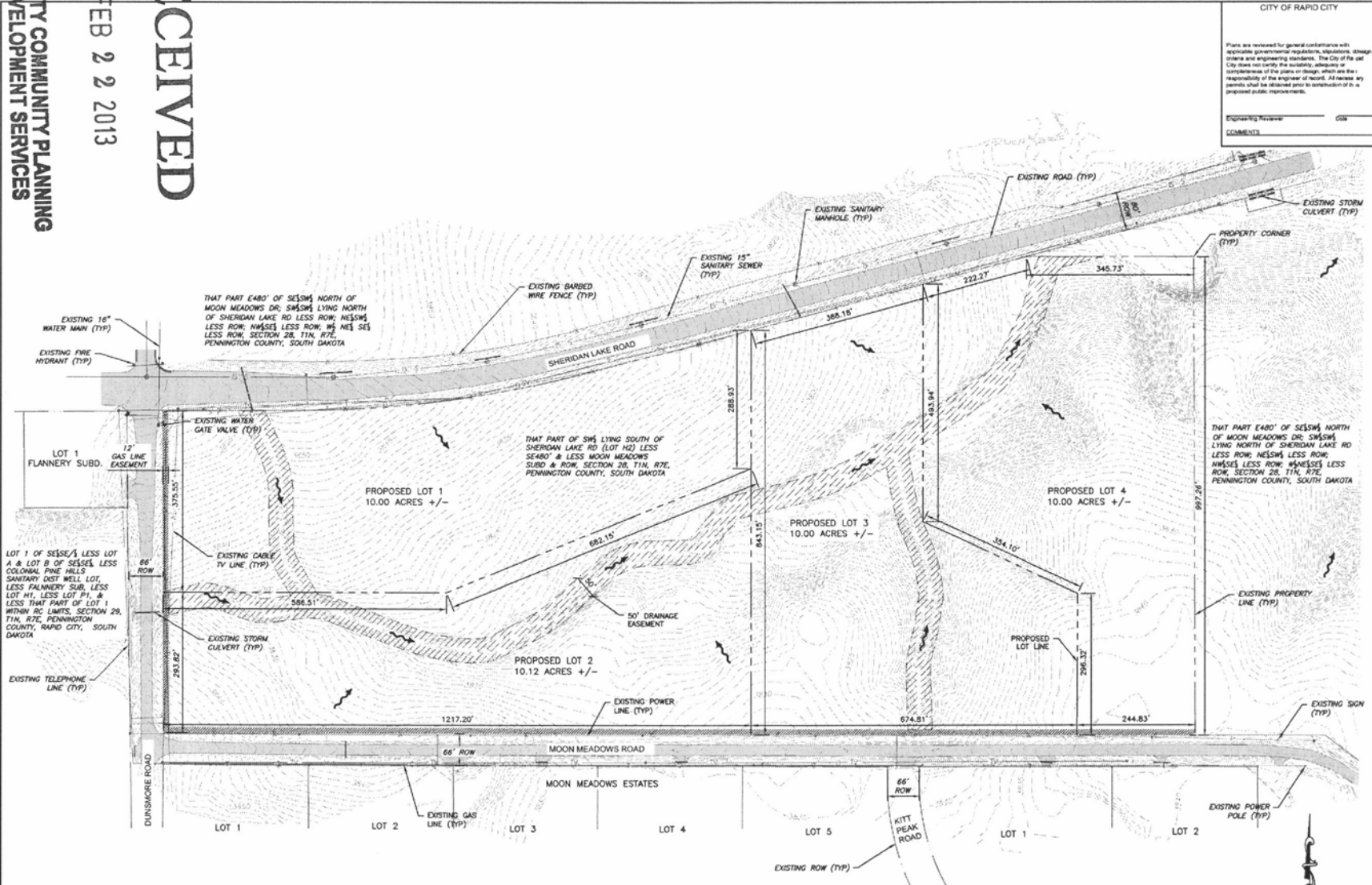


RAPID CITY COMMUNITY PLANNING & DEVELOPMENT SERVICES

FEB 22 2013

RECEIVED



THAT PART E480' OF SE1/4 NORTH OF MOON MEADOWS DR. SW1/4 LYING NORTH OF SHERIDAN LAKE RD LESS ROW. NE1/4 SW1/4 LESS ROW. NW1/4 SW1/4 LESS ROW. SECTION 28, T1N, R7E, PENNINGTON COUNTY, SOUTH DAKOTA

THAT PART OF SW1/4 LYING SOUTH OF SHERIDAN LAKE RD (LOT #2) LESS SEARDY & LESS MOON MEADOWS SUBD & ROW. SECTION 28, T1N, R7E, PENNINGTON COUNTY, SOUTH DAKOTA

THAT PART E480' OF SE1/4 NORTH OF MOON MEADOWS DR. SW1/4 LYING NORTH OF SHERIDAN LAKE RD LESS ROW. NE1/4 SW1/4 LESS ROW. NW1/4 SW1/4 LESS ROW. SECTION 28, T1N, R7E, PENNINGTON COUNTY, SOUTH DAKOTA

LOT 1 OF SE1/4, A LESS LOT A & LOT B OF SE1/4 LESS COLORADO PINE HILLS SANITARY DIST WELL LOT, LESS FALMERRY SUBD, LESS LOT #1, LESS LOT #1, & LESS THAT PART OF LOT 1 WITHIN RC LIMITS, SECTION 29, T1N, R7E, PENNINGTON COUNTY, RAPID CITY, SOUTH DAKOTA

NOTES:
 PROPOSED LOTS 1, 2, 3, AND 4 WILL HAVE INDIVIDUAL WELLS WITH SEPTIC SYSTEMS, IN ACCORDANCE WITH PENNINGTON COUNTY RULES AND REGULATIONS.
 A VARIANCE TO RAPID CITY ORDINANCE 12.16.080 WILL BE APPLIED FOR TO WAIVE THE REQUIREMENT FOR INSTALLATION OF SIDEWALK.
 NO GRADING PLANNED ON THE SITE.

SCALE: 1" = 100'

CITY OF RAPID CITY		Submittal:
Plans are reviewed for general conformance with applicable governmental regulations, ordinances, design criteria and engineering standards. The City of Rapid City does not certify the suitability, adequacy or completeness of the plans or design, which are the responsibility of the engineer of record. All necessary permits shall be obtained prior to construction of a proposed public improvement.		Reviewers:
Engineering Reviewer: GJA	Comments:	

Internal Job No: 13-0007	Designed By: S.G.O.	Drawn By: S.G.O.
Submitted By: HANSON SURVEYING	Survey Date: 1/29/2013	

PRELIMINARY FOR REVIEW ONLY

DREAM DESIGN INTERNATIONAL, INC.
 ENGINEERING, LANDSCAPE ARCHITECTURE, LAND PLANNING, CONSTRUCTION ADMINISTRATION
 528 KANBAR CITY STREET, SUITE 404, RAPID CITY, SD, 57701
 PHONE: (605) 348-0338 FAX: (605) 348-0345 WWW.DREAMDESIGNING.COM

DUNSMORE ROAD SUBDIVISION
 RAPID CITY, PENNINGTON COUNTY, SOUTH DAKOTA