

**Plat of PLM Subdivision
including Lots 36 through 53 of Block 1,
Easement for Sanitary Sewer and Dedicated Right-of-Way**

located in (and formerly portions of) the SE1/4 NW 1/4, Section 4, T1N, R8E, B.H.M.
and in Lot 16, Block 1 of PLM Subdivision in the SE1/4 NW 1/4, Section 4, T1N, R8E, B.H.M.
Rapid City, Pennington County, South Dakota

Prepared by Fisk Land Surveying
& Consulting Engineers, Inc.
P.O. Box 8154, Rapid City, SD 57709
605-348-1538
Project # 13-02-01

Conestoga Court, containing 45,815SF (1.05 Ac) as shown hereon
is hereby dedicated as public right-of-way, however such
dedication shall not be construed to mean a donation
of the fee of said land.

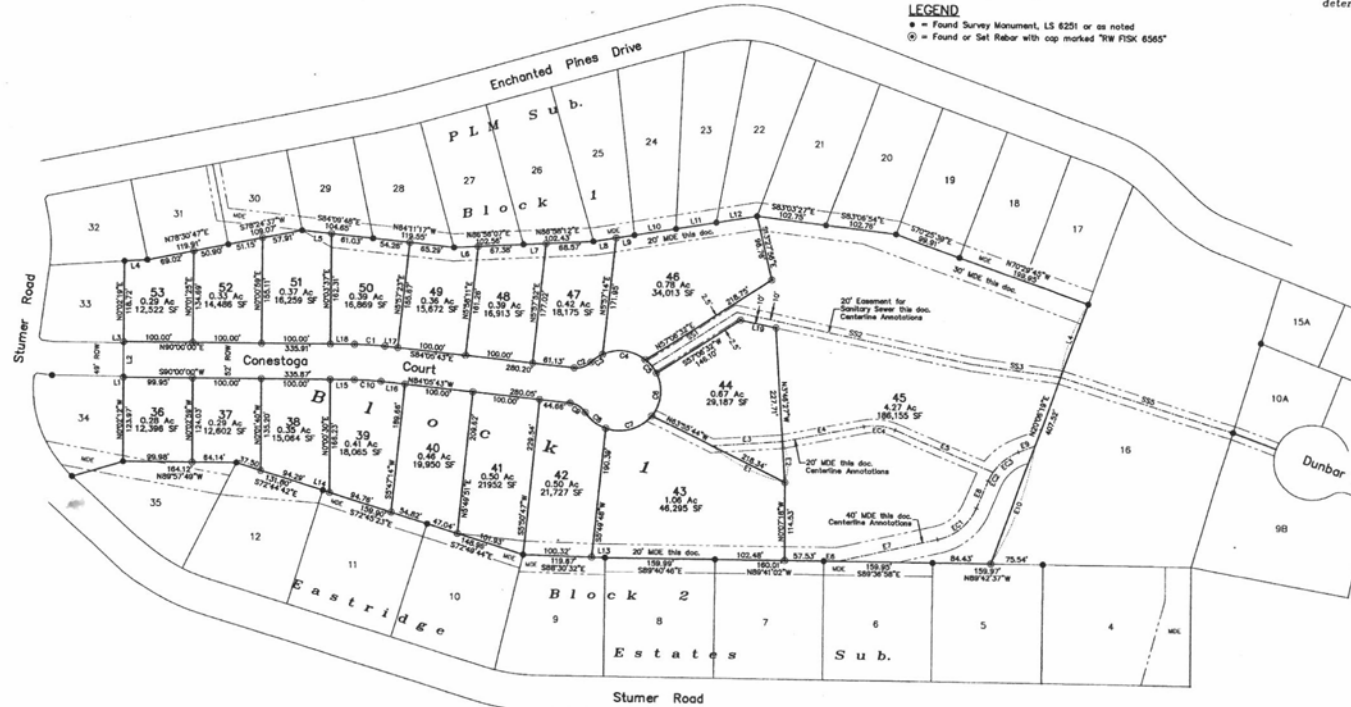
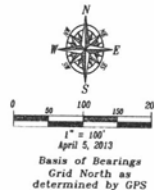
All measurements shown are measured this survey
see previous plats for record information

Utility & Minor Drainage Easements:
E' on the interior sides of all lot lines.

All major drainage easements shown hereon shall be free of all obstructions,
including but not limited to buildings, walls, fences, hedges, trees and shrubs.
These easements grant to all public authorities the right to construct, operate,
maintain, inspect and repair such improvements and structures as it deems expedient
to facilitate drainage from any source.

LEGEND

- ⊙ = Found Survey Monument, LS 8251 or as noted
- ⊙ = Found or Set Rebar with cap marked "RW FISK 6565"



Short Course Tables

NUM	DELTA	ARC	RADIUS	BEARING	DISTANCE
C1	575417"	43.87	426.00	N87°02'51"W	43.88
C2	30750.48"	23.87	30.00	N70°29'21"W	25.92
C3	20707.40"	20.77	56.00	S85°02'19"W	20.82
C4	834.77"	65.66	54.00	N83°10'17"W	62.26
C5	2436.02"	25.33	54.00	N38°54'22"W	25.14
C6	844.20"	68.72	56.00	S81°34'14"W	83.23
C7	7120.20"	73.47	58.00	N77°31'49"W	68.81
C8	3772.20"	36.57	58.00	S51°44'15"W	37.89
C9	8120.00"	28.79	30.00	N89°37'00"W	28.87
C10	57417"	38.54	374.00	N87°02'51"W	38.53

NUM	BEARING	DISTANCE	NUM	BEARING	DISTANCE
L1	N07°02'17"W	1.49	L11	N80°29'12"E	60.45
L2	S07°02'48"E	48.03	L12	N80°29'12"E	60.30
L3	S07°02'18"W	1.49	L13	S88°20'21"E	19.30
L4	N88°02'40"E	32.42	L14	S72°29'21"E	12.37
L5	S84°10'48"E	43.62	L15	S20°07'00"W	35.87
L6	N88°02'40"E	25.33	L16	S84°10'48"E	35.36
L7	N88°02'12"E	33.88	L17	S84°10'48"E	19.07
L8	N80°21'48"E	33.43	L18	S80°07'00"W	35.87
L9	N80°21'48"E	26.82	L19	N78°00'00"W	35.31
L10	N80°21'48"E	60.27			

Major Drainage Easement Course Table

NUM	BEARING	DISTANCE
E1	N83°55'44"W	120.00
E2	N78°42'17"E	80.00
E3	N86°04'17"E	104.00
E4	N78°42'17"E	120.00
E5	S87°17'40"E	156.51
E6	S88°20'21"E	20.00
E7	N77°14'48"E	150.78
E8	N23°03'58"E	43.38
E9	N82°33'17"E	25.33
E10	N22°08'12"E	185.00

NUM	DELTA	ARC	RADIUS	BEARING	DISTANCE
EC1	5417.54"	75.79	80.00	S28°23'54"W	14.86
EC2	1243.51"	14.86	80.00	S28°23'54"W	14.86
EC3	3443.60"	46.59	80.00	S28°23'54"W	47.85
EC4	3333.10"	47.32	80.00	N84°14'18"W	46.83

Sanitary Sewer Easement Course Table

NUM	BEARING	DISTANCE
SS1	N20°02'20"E	147.71
SS2	S78°02'17"E	382.52
SS3	S82°15'54"E	120.78
SS4	S20°02'17"W	114.00
SS5	S72°21'02"E	283.78