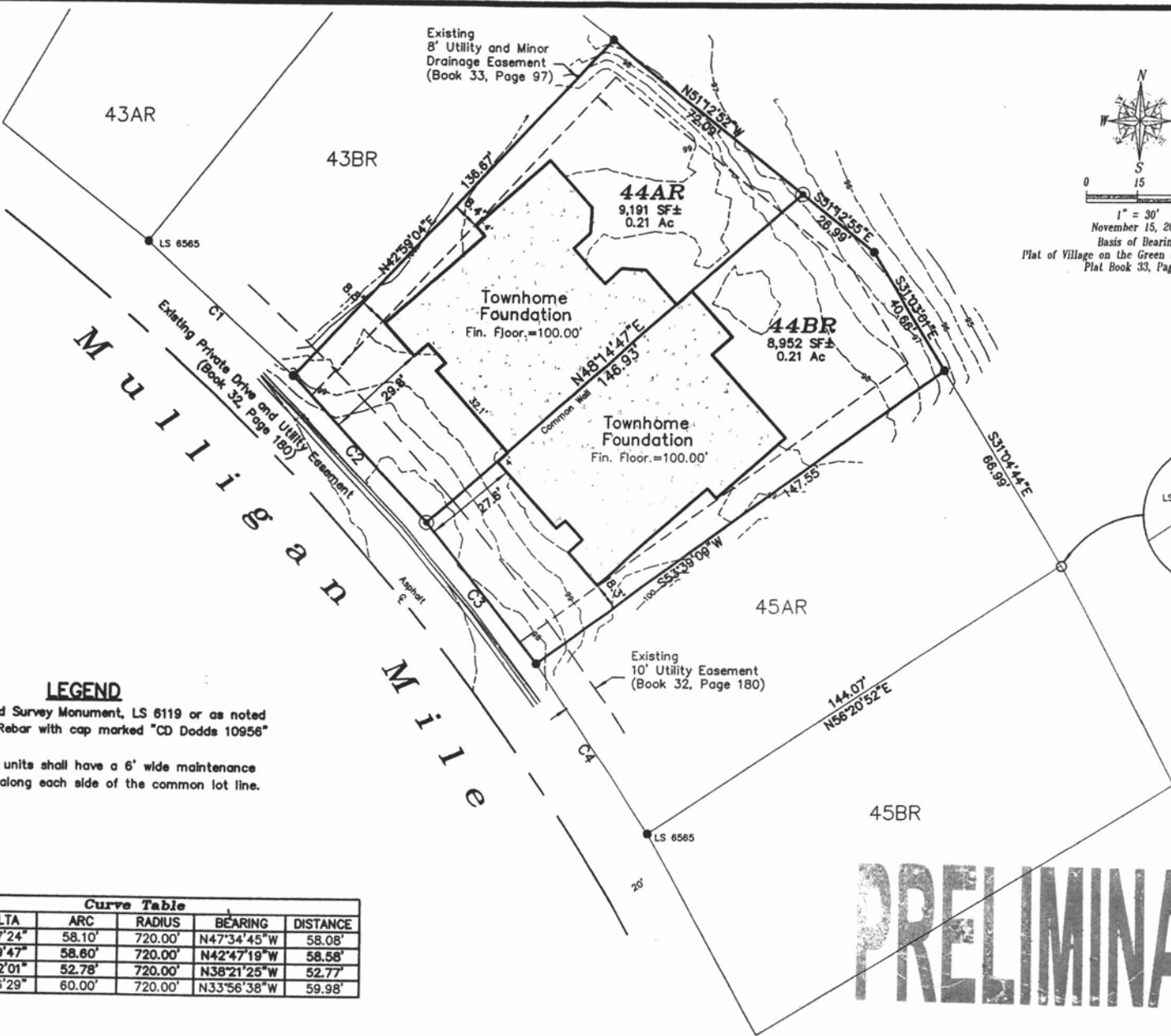
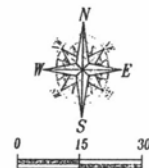


Fisk Land Surveying & Consulting, Inc.
 1022 Main Street (P.O. Box 8154)
 Rapid City, South Dakota 57709
 (605) 341-1112 (In)

Site Plan of Lots 44AR and 44BR of Village on the Green No. 2 Subdivision Pennington County, South Dakota

Surveyed by: CDD
 Date: 11/15/2012
 Drawn by: CDD
 Checked by: JF
 Revisions:

Site Plan
 1 of 1
 Project No. 12-11-04



Existing 8" Utility and Minor Drainage Easement (Book 33, Page 97)

44AR
 9,191 SF ±
 0.21 Ac

44BR
 8,952 SF ±
 0.21 Ac

Townhome Foundation
 Fin. Floor.=100.00'

Townhome Foundation
 Fin. Floor.=100.00'

Existing 10' Utility Easement (Book 32, Page 180)

LEGEND

- = Found Survey Monument, LS 6119 or as noted
- ⊙ = Set Rebar with cap marked "CD Dodds 10956"

Townhome units shall have a 6' wide maintenance easement along each side of the common lot line.

Curve Table					
NUM	DELTA	ARC	RADIUS	BEARING	DISTANCE
C1	4°37'24"	58.10'	720.00'	N47°34'45"W	58.08'
C2	4°39'47"	58.60'	720.00'	N42°47'19"W	58.58'
C3	4°12'01"	52.78'	720.00'	N38°21'25"W	52.77'
C4	4°46'29"	60.00'	720.00'	N33°56'38"W	59.98'

PRELIMINARY