

RECEIVED

FEB 22 2013

Rapid City Community Planning & Development Services

SPECIFICATIONS TO BE USED:

FOR CONSTRUCTION OF THE SITE WORK ELEMENTS, REFERENCE IS HEREBY MADE TO THE CITY OF RAPID CITY STANDARD SPECIFICATIONS FOR PUBLIC WORKS CONSTRUCTION, CURRENT EDITION.

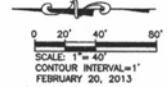
UTILITIES

SOUTH DAKOTA ONE CALL NOTIFICATION CENTER
11800 GREENVILLE AVENUE
DALLAS, TX 75243
1-800-785-7474

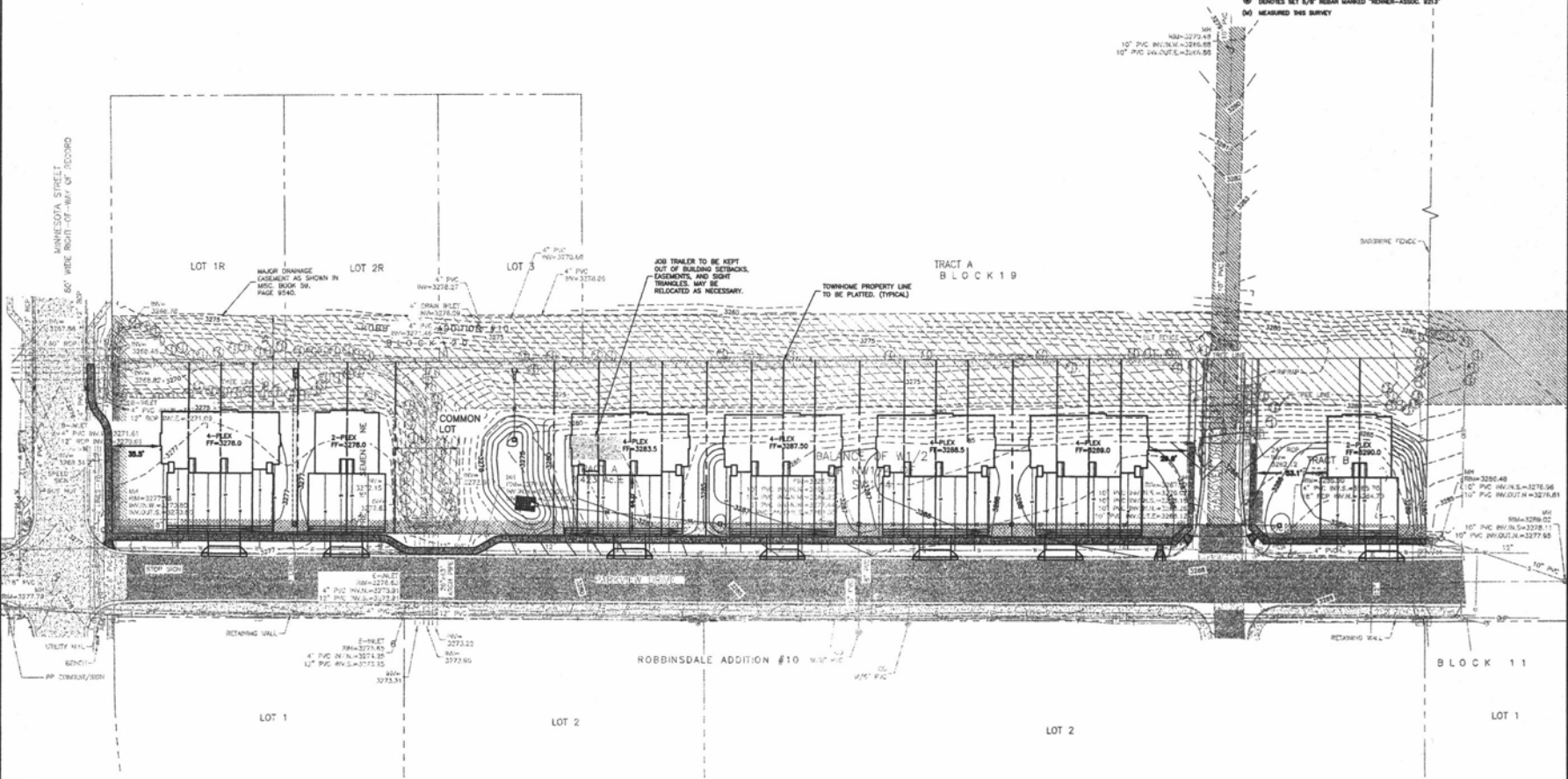
The locations of existing underground utilities are shown in an approximate way only and have not been independently verified by the center or its representatives. The contractor shall determine the exact location of all existing utilities before commencing work, and agree to be fully responsible for any and all damage which might be occasioned by the contractor's failure to exactly locate and preserve any and all underground utilities.

LEGEND

- MANHOLE
- FIRE HYDRANT
- ⊕ WATER VALVE
- ⊕ CLEAR OUT
- ⊕ POWER POLE
- ⊕ DECIDUOUS TREE
- ⊕ SIGN
- ⊕ TELEPHONE BOX
- ⊕ FIBER BOX
- ⊕ PROPERTY LINE
- ⊕ BARRIERS FENCE
- ⊕ SALT FENCE
- ⊕ CURB & GUTTER
- ⊕ WATER LINE
- ⊕ OVER HEAD POWER
- ⊕ POWER LINE
- ⊕ FIBER OPTIC LINE
- ⊕ TELEPHONE LINE
- ⊕ SANITARY SEWER LINE
- ⊕ STORM SEWER LINE
- ⊕ GAS LINE
- ⊕ MINOR CONTOUR (1')
- ⊕ MAJOR CONTOUR (5')
- ⊕ CONCRETE SURFACE
- ⊕ ASPHALT SURFACE



- INDOTES FOLD-UP SURVEY MONUMENT MARKED LS 2022 UNLESS OTHERWISE NOTED.
- ⊕ INDOTES SET 8/8\"/>



Prepared By: **RENNER & ASSOCIATES, L.L.C.**
 816 Sierra Park, Rapid City, SD 57701
 605-342-1111
 Fax: 605-342-1112
 Email: info@renner-associates.com
 Website: www.renner-associates.com

Scale:	1" = 40'
Designed By:	JRO
Drawn By:	JRO
Design Date:	2/20/13
Reviewed By:	RL_NRL
Survey Date:	10/14/2011
Revision:	
7/10/13 - REVISION #1	
2/20/13 - REVISION #2	
CHANGED TO TOWNHOMES	

PARKVIEW TOWNHOMES
 BALANCE OF THE W1/2 OF THE NW1/4 OF THE SW1/4 OF SECTION 18
 T1N, 18E, R18W
 RAPID CITY, PENNINGTON COUNTY, SOUTH DAKOTA

Project File:
 809 ACRES
 P.O. BOX 8058
 RAPID CITY, SD 57709

Sheet No:
#2105.11

Sheet Title:
GRADING PLAN

Sheet:
4 of 7