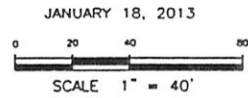


RECEIVED

JAN 21 2013

STREET & DRAINAGE



JANUARY 18, 2013

RECEIVED

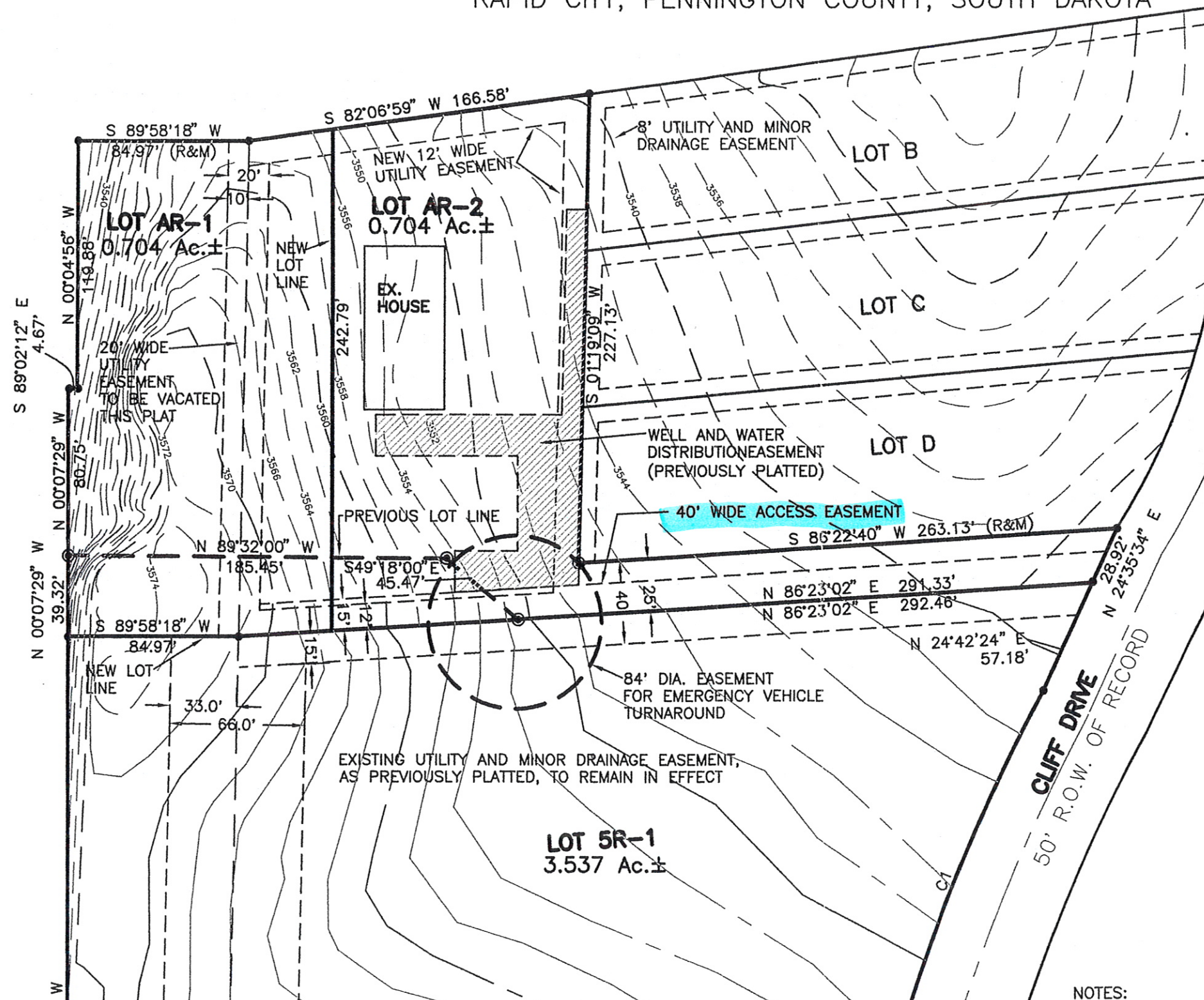
JAN 18 2013

RAPID CITY COMMUNITY PLANNING
& DEVELOPMENT SERVICES

(FORMERLY LOT AR OF LOT 4R OF BLOCK 15, AND LOT 5R OF BLOCK 15, CANYON LAKE HEIGHTS SUBDIVISION)
LOCATED IN THE SE1/4 OF THE SE1/4, OF SECTION 8, T1N, R7E, B.H.M.,
AND IN THE SW1/4 OF THE SW1/4, OF SECTION 9, T1N, R7E, B.H.M.,
RAPID CITY, PENNINGTON COUNTY, SOUTH DAKOTA

PLAT OF
LOT AR-1 AND AR-2 OF LOT 4R OF BLOCK 15,
AND LOT 5R-1 OF BLOCK 15,
CANYON LAKE HEIGHTS SUBDIVISION,

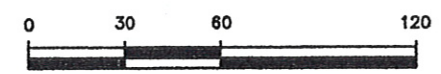
NAL Redlines
1/23/2012



FARVIEW
DRIVE



JANUARY 3, 2013



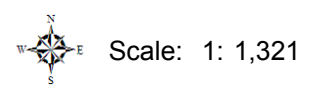
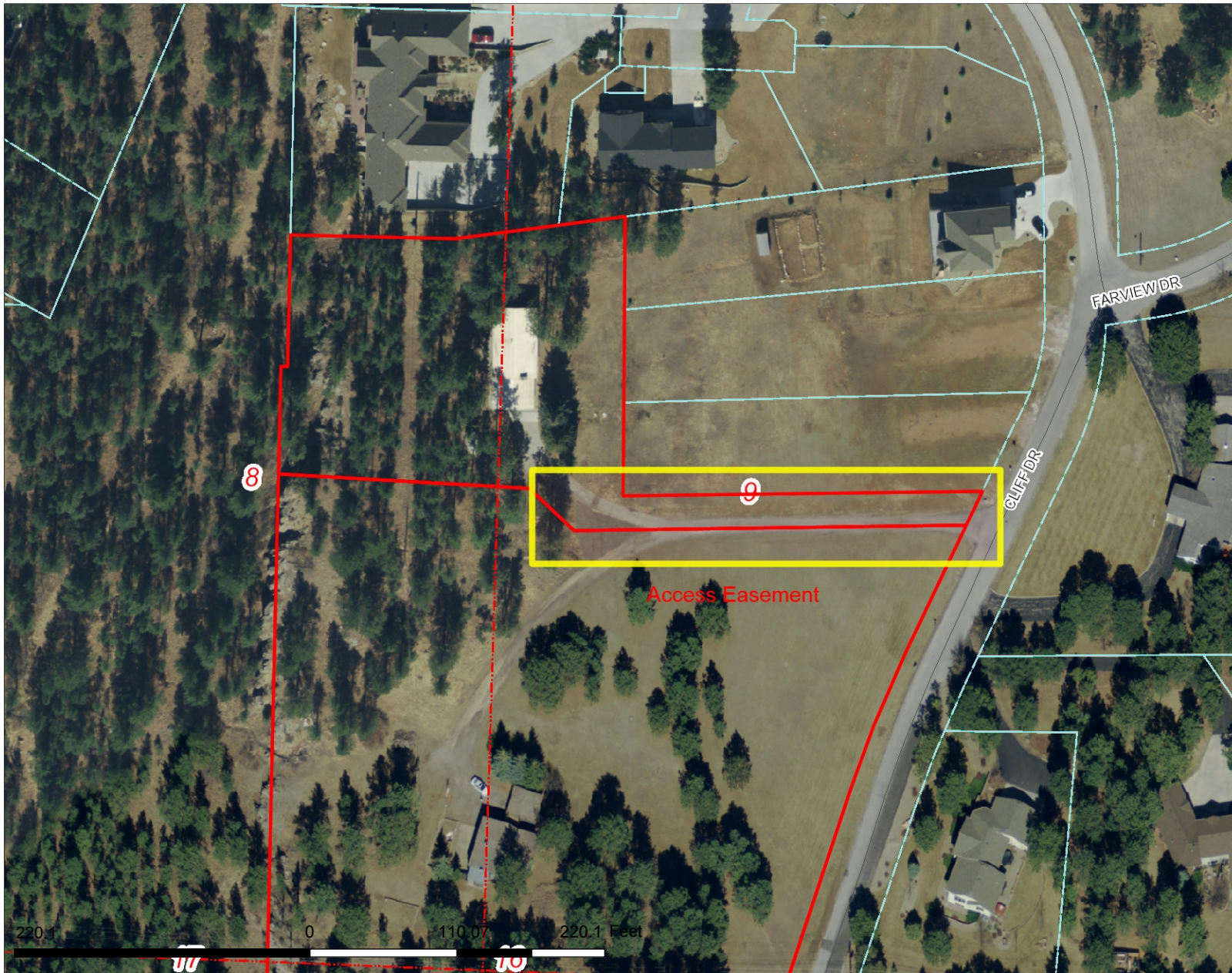
SCALE 1" = 60'



NOTES:

Legend

- Roads
 - Interstate
 - US highway
 - SD highway
 - County highway
 - Main road
 - Minor arterial
 - Collector
 - Ramp
 - Paved road
 - Unpaved road
 - FS Highway
 - Driveway
 - Paved Alley
 - Unpaved Alley
 - Unimproved road
 - Trail
 - Airport Runway
 - Not yet coded
- Township/Section Lines
 - 0
 - 7
- Tax Parcels
- Lot Lines
 - <Null>
 - Lot Line
 - Parcel Line
- County Line



Map Notes:

DISCLAIMER: This map is provided 'as is' without warranty of any representation to accuracy, timeliness, or completeness. The burden for determining accuracy, completeness, timeliness, merchantability, and fitness for or the appropriateness for use rests solely on the user. Rapid City and Pennington County make no warranties, express or implied, as to the use of the map. There are no implied warranties of merchantability or fitness for a particular purpose. The user acknowledges and accepts the limitations of the map, including the fact that the data used to create the map is dynamic and is in the constant state of maintenance, correction, and update. This documents does not represent a legal survey of the land. There are no restrictions on the distribution of printed Rapid City/Pennington County maps, other than the City of Rapid City copyright/credit notice must be legible on the print. The user agrees to recognize and honor in perpetuity the copyrights and other proprietary claims for the map(s) established or produced by the City of Rapid City or the vendors furnishing said items to the City of Rapid City.