

**Plat of Lots A through D of Lot 5 of North 80 Subdivision  
and Dedicated Right-of-Way  
(formerly a portion of Lot 5 of North 80 Subdivision)  
Located in the SW1/4 NE1/4 of Section 19, T1N, R8E, BHM,  
Rapid City, Pennington County, South Dakota**

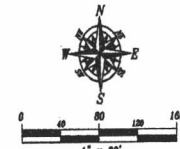
Prepared by:  
Fisk Land Surveying & Consulting Engineers, Inc.  
P.O. Box 8154  
Rapid City, SD 57708  
(605) 348-1538  
Project No. 12-09-02

**NOTES**

All Major Drainage Easements Shown Hereon  
Shall Be Keep Free Of All Obstructions, Including  
But Not Limited To Buildings, Walls, Fences,  
Hedges, Trees And Shrubs. These Easements  
Grant To All Public Authorities The Right To  
Construct, Operate, Maintain, Inspect, And Repair  
Such Improvements And Structures As It Deems  
Expedient To Facilitate Drainage From Any Source.

Utility and Minor Drainage Easements - 8' on  
the interior sides of all lot lines, as shown

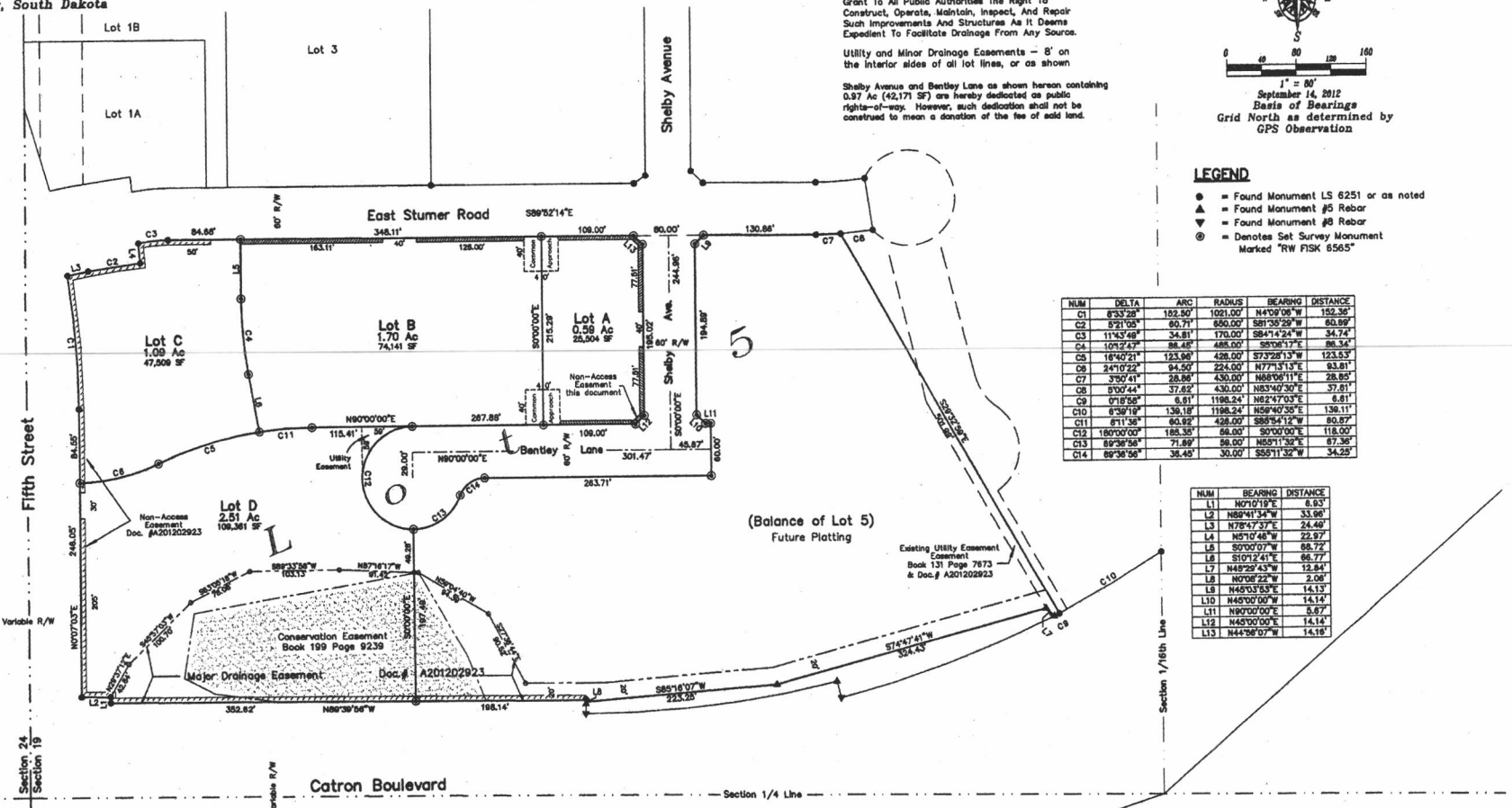
Shelby Avenue and Bentley Lane as shown hereon containing  
0.37 Ac (42,171 SF) are hereby dedicated as public  
right-of-way. However, such dedication shall not be  
construed to mean a donation of the fee of said land.



September 14, 2012  
1" = 60'  
Basis of Bearings  
Grid North as determined by  
GPS Observation

**LEGEND**

- = Found Monument LS 6251 or as noted
- ▲ = Found Monument #5 Rebar
- ▼ = Found Monument #8 Rebar
- ⊙ = Denotes Set Survey Monument  
Marked "RW FISK 6565"



NUM	DELTA	ARC	RADIUS	BEARING	DISTANCE
C1	8733.28'	162.50'	1001.00'	N44°00'00"W	152.35'
C2	8721.03'	60.11'	856.00'	S81°08'59"W	60.89'
C3	11743.49'	34.81'	170.00'	S84°14'24"W	34.74'
C4	10927.47'	38.45'	488.00'	S57°08'17"E	88.34'
C5	18740.21'	153.96'	428.00'	S73°28'13"W	123.53'
C6	24710.22'	94.50'	224.00'	N77°11'11"E	83.81'
C7	3700.41'	28.89'	430.00'	N88°06'11"E	28.85'
C8	8700.44'	37.82'	430.00'	N83°49'30"E	37.81'
C9	0718.58'	6.01'	1198.24'	N82°47'03"E	6.81'
C10	8739.19'	139.18'	1198.24'	N59°40'35"E	139.11'
C11	8711.38'	94.92'	428.00'	S88°54'12"W	80.87'
C12	18000.00'	188.35'	68.00'	S0°00'00"E	118.00'
C13	89738.58'	71.89'	68.00'	N85°11'36"E	87.38'
C14	89738.58'	34.45'	36.00'	S55°11'52"W	34.23'

NUM	BEARING	DISTANCE
L1	N07°01'19"E	8.93'
L2	N88°41'34"W	23.98'
L3	N78°17'37"E	24.49'
L4	N52°10'48"W	22.97'
L5	S0°00'07"W	88.72'
L6	S10°12'41"E	88.77'
L7	N48°29'43"W	12.84'
L8	N0°08'22"W	2.08'
L9	N48°03'59"E	14.13'
L10	N48°00'00"W	14.14'
L11	N80°00'00"E	5.87'
L12	N48°00'00"E	14.14'
L13	N44°08'07"W	14.18'

PRELIMINARY

RECEIVED

SEP 14 2012

Rapid City Community Planning  
& Development Services