

Plat of Lots 6 Through 8 of Block 2 of I-90 Heartland Business P
and dedicated public right of way shown as Rearden Court
located in SE1/4 of Section 21, T2N, R8E, BHM,
Rapid City, Pennington County, South Dakota.

RECEIVED

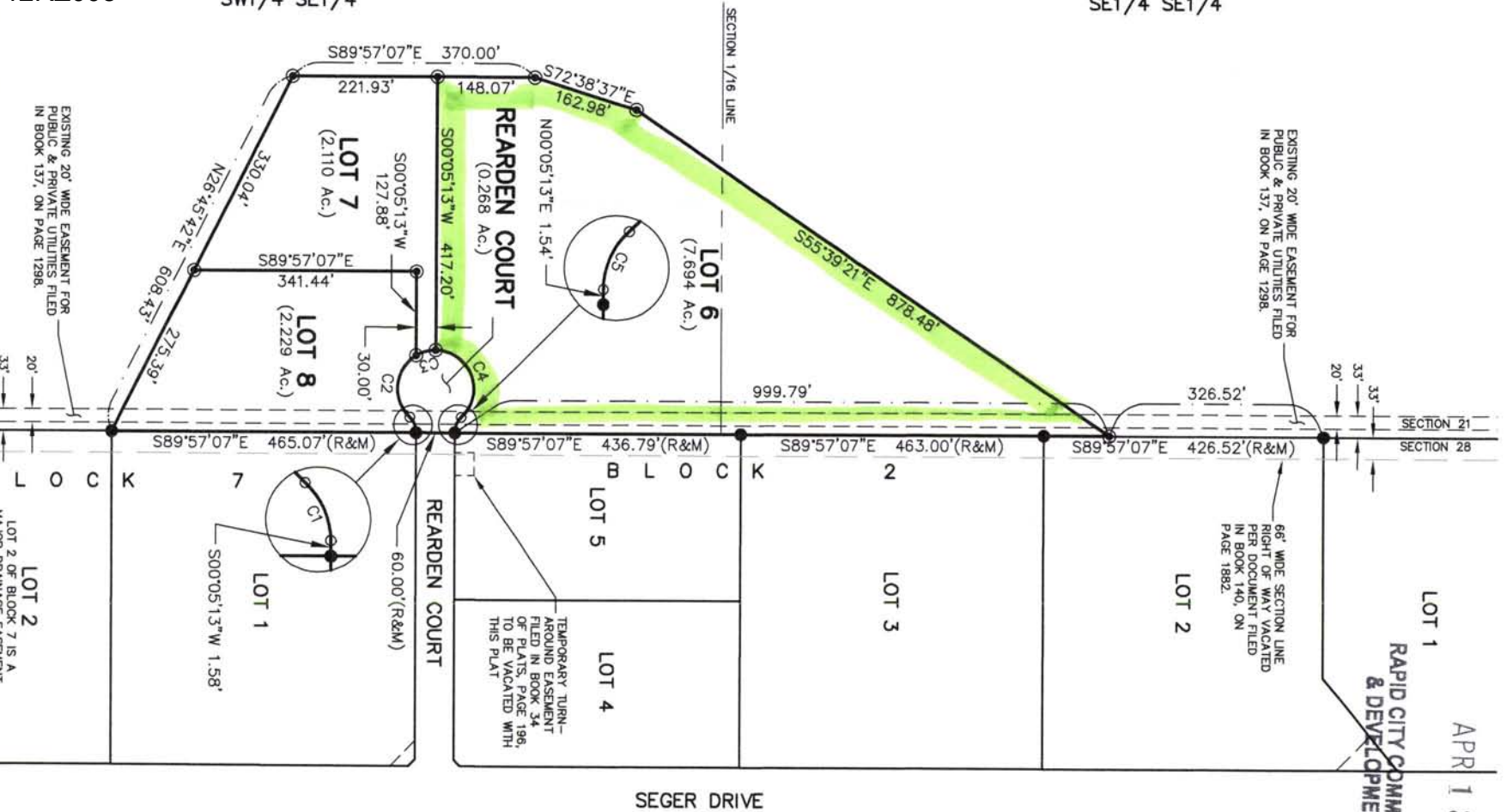
APR 13 2012

RAPID CITY COMMUNITY PLANNING
& DEVELOPMENT SERVICES

12RZ008

SW1/4 SE1/4

SE1/4 SE1/4



EXISTING 20' WIDE EASEMENT FOR
PUBLIC & PRIVATE UTILITIES FILED
IN BOOK 137, ON PAGE 1298.

EXISTING 20' WIDE EASEMENT FOR
PUBLIC & PRIVATE UTILITIES FILED
IN BOOK 137, ON PAGE 1298.

66' WIDE SECTION LINE
RIGHT OF WAY VACATED
PER DOCUMENT FILED
IN BOOK 140, ON
PAGE 1882.

TEMPORARY TURN-
AROUND EASEMENT
FILED IN BOOK 34,
PAGE 196,
TO BE VACATED WITH
THIS PLAT

LOT 2 OF BLOCK 7 IS A
1/4 WIDE "NO-IMPACT" EASEMENT