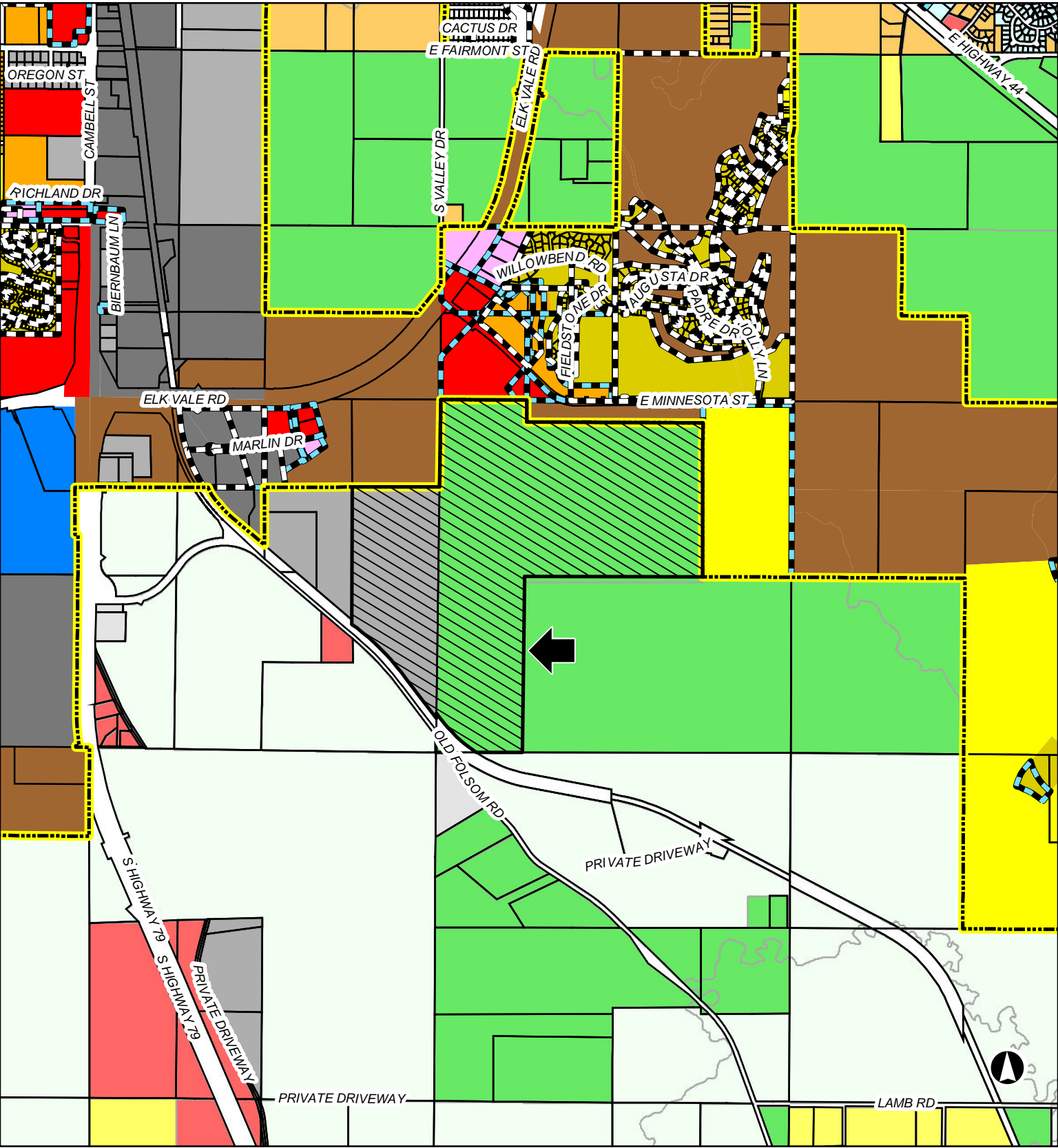


North of Old Folsom Road and South of Elk Vale Road



Rapid City - Pennington County Zoning

- | | | | | | |
|---------------------------|----------------------------|------------------|---------------------------------|-----------------------------|------------------------------|
| Subject Property | Medium Density Residential | Light Industrial | Planned Development | General Commercial, PC | Limited Ag., PC |
| General Agriculture | High Density Residential | Heavy Industrial | Planned Development Designation | Low Density Residential, PC | Light Industrial, PC |
| Low Density Residential-1 | Office Commercial | Public | Rapid City Limits | General Ag. District, PC | Planned Unit Development, PC |
| Low Density Residential-2 | General Commercial | | | Heavy Industrial, PC | Suburban Residential, PC |