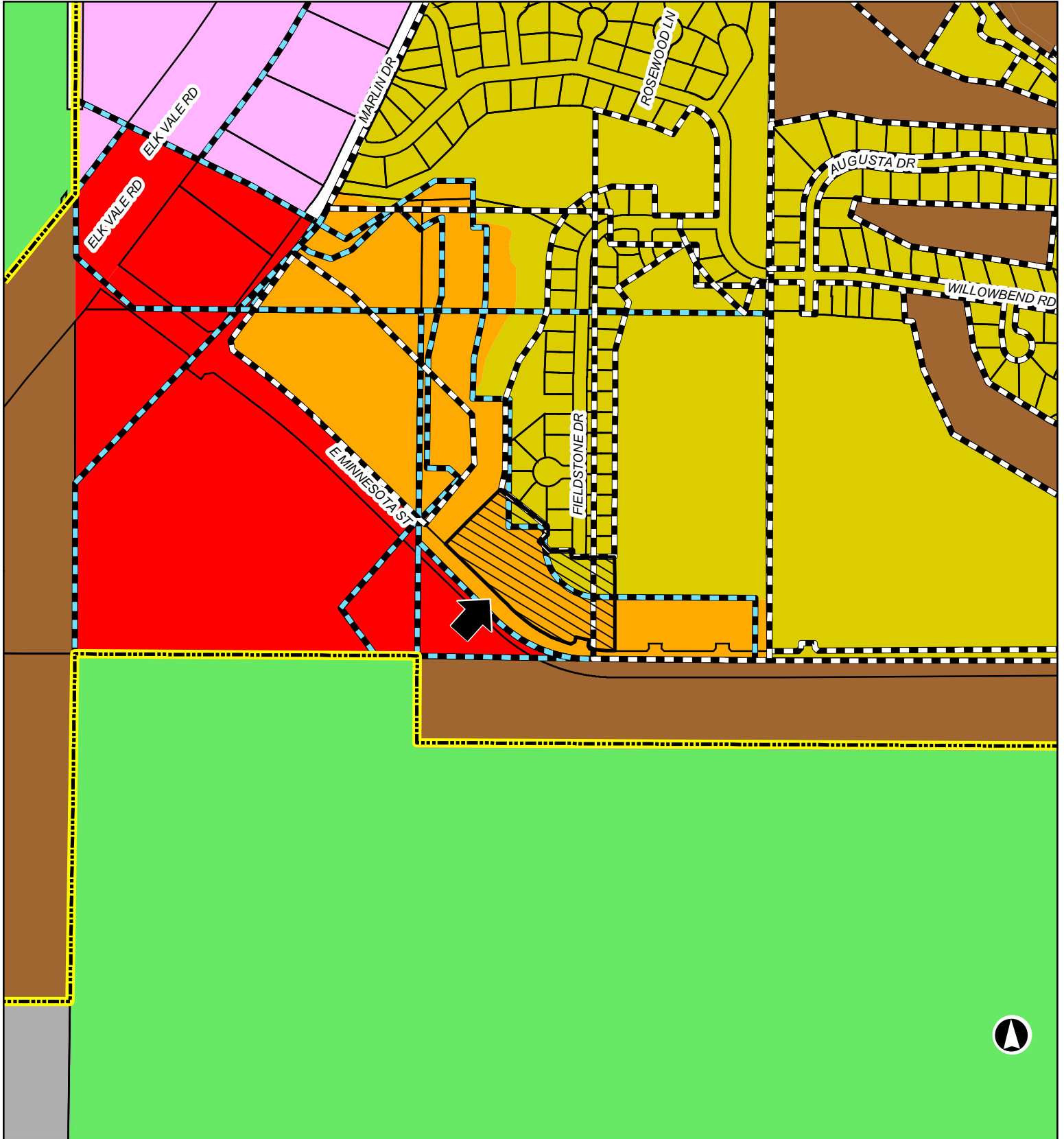


12PL029

Along the north side of East Minnesota Street at the current southern terminus of Fieldstone Drive



Rapid City - Pennington County Zoning

- | | | | | | |
|---------------------|----------------------------|--------------------|---------------------------------|---------------------|----------------------|
| Subject Property | Low Density Residential-2 | Office Commercial | Public | Planned Development | Heavy Industrial, PC |
| General Agriculture | Medium Density Residential | General Commercial | Planned Development Designation | Rapid City Limits | Limited Ag., PC |