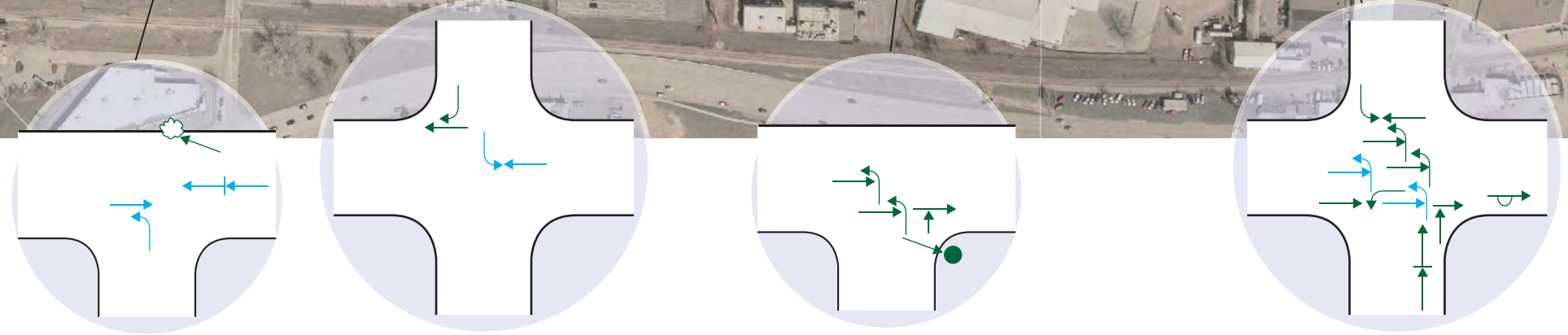


Rapid City Arterial Safety Study

**APPENDIX J WEST OMAHA STREET – MOUNTAIN VIEW TO WEST
BOULEVARD**



LEGEND		
Vehicle Movement	Fixed Objects	Severity
← Straight	□ Sign	■ Property Damage Only
⊥ Stopped	Ⓜ Signal	■ Injury
⌘ Overturn	☁ Tree	■ Fatality
↔ Sideswipe	Ⓜ Pole	
Ⓜ Parked	Ⓜ Curb	
↪ Right Turn	⌘ Animal	
↩ Left Turn	Ⓜ Barrier/Rail	
↻ U-Turn	⌘ Fence	
⌘ Pedestrian	● Rock/Boulder	
⌘ Bicycle		



Segment 9
W. Omaha Street -
Mountain View Road to West Boulevard



NORTH

Rapid City Arterial Safety Study

APPENDIX K ST. PATRICK STREET – ELM TO ST. JOSEPH



LEGEND

Vehicle Movement	Fixed Objects	Severity
← Straight	□ Sign	■ Property Damage Only
⊥ Stopped	Ⓜ Signal	■ Injury
⊗ Overturn	🌳 Tree	■ Fatality
↵ Sideswipe	📍 Pole	
🚗 Parked	📏 Curb	
↶ Right Turn	🐾 Animal	
↷ Left Turn	🚧 Barrier/Rail	
↻ U-Turn	⚡ Fence	
⊗ Pedestrian	● Rock/Boulder	
🚲 Bicycle		

NORTH ▲

Segment 10
St. Patrick Street -
Elm Avenue to St. Joseph Street



Consider Reviewing Snow
Removal Procedures for
Segment. Consider
Providing Additional
Speed Enforcement.



NORTH

Rapid City Arterial Safety Study

APPENDIX L OPINION OF PROBABLE COST TABLES



OPINION OF PROBABLE COST

In providing opinions of probable construction cost, the Client understands that Felsburg Holt & Ullevig has no control over costs or the price of labor, equipment or materials, or over the Contractor's method of pricing, and that the opinions of probable construction costs provided herein are to be made on the basis of our qualifications and experience. FHU makes no warranty, expressed or implied, as to the accuracy of such opinions as compared to bid or actual costs.

RAPID CITY Prepared By: JMW
 Date: 11-Oct-11
Haines (Linbergh Ave. to I-90) FHU Reference Nos.: 10160

ITEM DESCRIPTION	UNIT	QUANTITY	COST	TOTAL
Quantity Items				
Liquid Asphalt (8" depth)	TON	665	\$650	\$432,000
Concrete Sidewalk (6") (Bike Lane)	SF		\$10	\$0
Curb & Gutter	LF	2,751	\$40	\$110,000
Median Cover Material	SF	4,002	\$6	\$24,000
Sign	EA		\$720	\$0
Signals	EA	1	\$200,000	\$200,000
Bridge Widening	SF		\$250	\$0
TOTAL COST OF QUANTITY ITEMS:			(A)	\$766,000
Percentage Items				
Removals		3.0%	of A	\$23,000
Earthwork		4.0%	of A	\$31,000
Clearing and Grubbing		5.0%	of A	\$38,000
Striping		3.5%	of A	\$27,000
Construction Signing and Traffic Control		10.0%	of A	\$77,000
Surveying		5.0%	of A	\$38,000
Mobilization		5.0%	of A	\$38,000
TOTAL COST OF CONSTRUCTION BID ITEMS:			(CBI)	\$1,038,000
Force Account Items				
Utility Relocations		5.0%	of CBI	\$52,000
Contengencies & Misc. Items		20.0%	of CBI	\$208,000
TOTAL COST OF CONSTRUCTION ITEMS:			(CI)	\$1,298,000
Construction Engineering		20.0%	of CI	\$260,000
Design Engineering		10.0%	of CBI	\$104,000
TOTAL IMPROVEMENT COST:				\$1,558,000

Includes asphalt mat, asphalt flush jack, asphalt for prime, asphalt for surface treatment, & asphalt cement. & SAWCUT

Use price for 4" concrete sidewalk
 Sign Post & Sign (\$20(12lf) + 12SF(\$30))

*Note: Right-of-Way and Landscaping are not included in the costs.



OPINION OF PROBABLE COST

In providing opinions of probable construction cost, the Client understands that Felsburg Holt & Ullevig has no control over costs or the price of labor, equipment or materials, or over the Contractor's method of pricing, and that the opinions of probable construction costs provided herein are to be made on the basis of our qualifications and experience. FHU makes no warranty, expressed or implied, as to the accuracy of such opinions as compared to bid or actual costs.

RAPID CITY Prepared By: JMW
 Date: 3-Nov-11
Haines (I-90 to Disk Dr.) FHU Reference Nos.: 10160

ITEM DESCRIPTION	UNIT	QUANTITY	COST	TOTAL
Quantity Items				
Liquid Asphalt (8" depth)	TON	198	\$650	\$129,000
Concrete Sidewalk (6") (Bike Lane)	SF		\$10	\$0
Curb & Gutter	LF	1,711	\$40	\$68,000
Median Cover Material	SF	5,807	\$6	\$35,000
Sign	EA		\$720	\$0
Signals	EA		\$200,000	\$0
Bridge Widening	SF		\$250	\$0
TOTAL COST OF QUANTITY ITEMS:			(A)	\$232,000
Percentage Items				
Removals		3.0%	of A	\$7,000
Earthwork		4.0%	of A	\$9,000
Clearing and Grubbing		5.0%	of A	\$12,000
Striping		3.5%	of A	\$8,000
Construction Signing and Traffic Control		10.0%	of A	\$23,000
Surveying		5.0%	of A	\$12,000
Mobilization		5.0%	of A	\$12,000
TOTAL COST OF CONSTRUCTION BID ITEMS:			(CBI)	\$315,000
Force Account Items				
Utility Relocations		5.0%	of CBI	\$16,000
Contingencies & Misc. Items		20.0%	of CBI	\$63,000
TOTAL COST OF CONSTRUCTION ITEMS:			(CI)	\$394,000
Construction Engineering		20.0%	of CI	\$79,000
Design Engineering		10.0%	of CBI	\$32,000
TOTAL IMPROVEMENT COST:				\$473,000

Includes asphalt mat, asphalt flush jack, asphalt for prime, asphalt for surface treatment, & asphalt cement. & SAWCUT

Use price for 4" concrete sidewalk
 Sign Post & Sign (\$20(12lf) + 12SF(\$30))

*Note: Right-of-Way and Landscaping are not included in the costs.



OPINION OF PROBABLE COST

In providing opinions of probable construction cost, the Client understands that Felsberg Holt & Ullevig has no control over costs or the price of labor, equipment or materials, or over the Contractor's method of pricing, and that the opinions of probable construction costs provided herein are to be made on the basis of our qualifications and experience. FHU makes no warranty, expressed or implied, as to the accuracy of such opinions as compared to bid or actual costs.

RAPID CITY Prepared By: JMW
 Date: 11-Oct-11
Saint Joseph St. (5th St. to East Blvd.) FHU Reference Nos.: 10160

ITEM DESCRIPTION	UNIT	QUANTITY	COST	TOTAL
Quantity Items				
Liquid Asphalt (8" depth)	TON	0	\$650	\$0
Concrete Sidewalk (6") (Bike Lane)	SF		\$10	\$0
Curb & Gutter	LF		\$40	\$0
Median Cover Material	SF		\$6	\$0
Sign	EA		\$720	\$0
Signals	EA	1	\$200,000	\$200,000
Bridge Widening	SF		\$250	\$0
TOTAL COST OF QUANTITY ITEMS:			(A)	\$200,000
Percentage Items				
Removals		3.0%	of A	\$6,000
Earthwork		0.0%	of A	\$0
Clearing and Grubbing		0.0%	of A	\$0
Striping		7.0%	of A	\$14,000
Construction Signing and Traffic Control		10.0%	of A	\$20,000
Surveying		5.0%	of A	\$10,000
Mobilization		5.0%	of A	\$10,000
TOTAL COST OF CONSTRUCTION BID ITEMS:			(CBI)	\$260,000
Force Account Items				
Utility Relocations		5.0%	of CBI	\$13,000
Contingencies & Misc. Items		20.0%	of CBI	\$52,000
TOTAL COST OF CONSTRUCTION ITEMS:			(CI)	\$325,000
Construction Engineering		20.0%	of CI	\$65,000
Design Engineering		10.0%	of CBI	\$26,000
TOTAL IMPROVEMENT COST:				\$390,000

Includes asphalt mat, asphalt flush jack, asphalt for prime, asphalt for surface treatment, & asphalt cement. & SAWCUT

Use price for 4" concrete sidewalk
 Sign Post & Sign (\$20(12lf) + 12SF(\$30))

*Note: Right-of-Way and Landscaping are not included in the costs.



OPINION OF PROBABLE COST

In providing opinions of probable construction cost, the Client understands that Felsberg Holt & Ullevig has no control over costs or the price of labor, equipment or materials, or over the Contractor's method of pricing, and that the opinions of probable construction costs provided herein are to be made on the basis of our qualifications and experience. FHU makes no warranty, expressed or implied, as to the accuracy of such opinions as compared to bid or actual costs.

RAPID CITY Prepared By: JMW
 Date: 11-Oct-11
Jackson Blvd. (City Limit to Chapel Lane) FHU Reference Nos.: 10160

ITEM DESCRIPTION	UNIT	QUANTITY	COST	TOTAL
Quantity Items				
Liquid Asphalt (8" depth)	TON	0	\$650	\$0
Concrete Sidewalk (6") (Bike Lane)	SF		\$10	\$0
Curb & Gutter	LF		\$40	\$0
Median Cover Material	SF		\$6	\$0
Sign	EA	1	\$720	\$1,000
Signals	EA		\$200,000	\$0
Bridge Widening	SF		\$250	\$0
TOTAL COST OF QUANTITY ITEMS:			(A)	\$1,000
Percentage Items				
Removals		3.0%	of A	\$0
Earthwork		4.0%	of A	\$0
Clearing and Grubbing				\$5,000
Striping		3.5%	of A	\$0
Construction Signing and Traffic Control		10.0%	of A	\$0
Surveying		5.0%	of A	\$0
Mobilization		5.0%	of A	\$0
TOTAL COST OF CONSTRUCTION BID ITEMS:			(CBI)	\$6,000
Force Account Items				
Utility Relocations		5.0%	of CBI	\$0
Contengencies & Misc. Items		20.0%	of CBI	\$1,000
TOTAL COST OF CONSTRUCTION ITEMS:			(CI)	\$7,000
Construction Engineering		20.0%	of CI	\$1,000
Design Engineering		10.0%	of CBI	\$1,000
TOTAL IMPROVEMENT COST:				\$8,000

Includes asphalt mat, asphalt flush jack, asphalt for prime, asphalt for surface treatment, & asphalt cement. & SAWCUT

Use price for 4" concrete sidewalk
 Sign Post & Sign (\$20(12lf) + 12SF(\$30))

*Note: Right-of-Way and Landscaping are not included in the costs.



OPINION OF PROBABLE COST

In providing opinions of probable construction cost, the Client understands that Felsburg Holt & Ullevig has no control over costs or the price of labor, equipment or materials, or over the Contractor's method of pricing, and that the opinions of probable construction costs provided herein are to be made on the basis of our qualifications and experience. FHU makes no warranty, expressed or implied, as to the accuracy of such opinions as compared to bid or actual costs.

RAPID CITY Prepared By: JMW
 Date: 11-Oct-11
W. Main St. (Sheridan Lake Rd. to Mountain View Rd.) FHU Reference Nos.: 10160

ITEM DESCRIPTION	UNIT	QUANTITY	COST	TOTAL
Quantity Items				
Liquid Asphalt (8" depth)	TON	2,446	\$650	\$1,590,000
Concrete Sidewalk (6")	SF	28,610	\$10	\$286,000
Curb & Gutter	LF	9,992	\$40	\$400,000
Median Cover Material	SF	14,767	\$6	\$89,000
Sign	EA		\$720	\$0
Signals	EA	1	\$200,000	\$200,000
Bridge Widening	SF	6,000	\$250	\$1,500,000
TOTAL COST OF QUANTITY ITEMS:			(A)	\$4,065,000
Percentage Items				
Removals		3.0%	of A	\$122,000
Earthwork		4.0%	of A	\$163,000
Clearing and Grubbing		5.0%	of A	\$203,000
Striping		3.5%	of A	\$142,000
Construction Signing and Traffic Control		10.0%	of A	\$407,000
Surveying		5.0%	of A	\$203,000
Mobilization		5.0%	of A	\$203,000
TOTAL COST OF CONSTRUCTION BID ITEMS:			(CBI)	\$5,508,000
Force Account Items				
Utility Relocations		5.0%	of CBI	\$275,000
Contengencies & Misc. Items		20.0%	of CBI	\$1,102,000
TOTAL COST OF CONSTRUCTION ITEMS:			(CI)	\$6,885,000
Construction Engineering		20.0%	of CI	\$1,377,000
Design Engineering		10.0%	of CBI	\$551,000
TOTAL IMPROVEMENT COST:				\$8,262,000

Includes asphalt mat, asphalt flush jack, asphalt for prime, asphalt for surface treatment, & asphalt cement. & SAWCUT

Use price for 4" concrete sidewalk
 Sign Post & Sign (\$20(12lf) + 12SF(\$30))

*Note: Right-of-Way and Landscaping are not included in the costs.



OPINION OF PROBABLE COST

In providing opinions of probable construction cost, the Client understands that Felsburg Holt & Ullevig has no control over costs or the price of labor, equipment or materials, or over the Contractor's method of pricing, and that the opinions of probable construction costs provided herein are to be made on the basis of our qualifications and experience. FHU makes no warranty, expressed or implied, as to the accuracy of such opinions as compared to bid or actual costs.

RAPID CITY Prepared By: JMW
 Date: 3-Nov-11
LaCrosse St. (Anamosa St. to Meridian Lane) FHU Reference Nos.: 10160

ITEM DESCRIPTION	UNIT	QUANTITY	COST	TOTAL
Quantity Items				
Liquid Asphalt (8" depth)	TON	15	\$650	\$10,000
Concrete Sidewalk (6") (Bike Lane)	SF		\$10	\$0
Curb & Gutter	LF	156	\$40	\$6,000
Median Cover Material	SF	305	\$6	\$2,000
Sign	EA		\$720	\$0
Signals	EA		\$200,000	\$0
Bridge Widening	SF		\$250	\$0
TOTAL COST OF QUANTITY ITEMS:			(A)	\$18,000
Percentage Items				
Removals		3.0%	of A	\$1,000
Earthwork		4.0%	of A	\$1,000
Clearing and Grubbing		5.0%	of A	\$1,000
Striping		3.5%	of A	\$1,000
Construction Signing and Traffic Control		10.0%	of A	\$2,000
Surveying		5.0%	of A	\$1,000
Mobilization		5.0%	of A	\$1,000
TOTAL COST OF CONSTRUCTION BID ITEMS:			(CBI)	\$26,000
Force Account Items				
Utility Relocations		5.0%	of CBI	\$1,000
Contengencies & Misc. Items		20.0%	of CBI	\$5,000
TOTAL COST OF CONSTRUCTION ITEMS:			(CI)	\$32,000
Construction Engineering		20.0%	of CI	\$6,000
Design Engineering		10.0%	of CBI	\$3,000
TOTAL IMPROVEMENT COST:				\$38,000

Includes asphalt mat, asphalt flush jack, asphalt for prime, asphalt for surface treatment, & asphalt cement. & SAWCUT

Use price for 4" concrete sidewalk
 Sign Post & Sign (\$20(12lf) + 12SF(\$30))

*Note: Right-of-Way and Landscaping are not included in the costs.



OPINION OF PROBABLE COST

In providing opinions of probable construction cost, the Client understands that Felsberg Holt & Ullevig has no control over costs or the price of labor, equipment or materials, or over the Contractor's method of pricing, and that the opinions of probable construction costs provided herein are to be made on the basis of our qualifications and experience. FHU makes no warranty, expressed or implied, as to the accuracy of such opinions as compared to bid or actual costs.

RAPID CITY Prepared By: JMW
 Date: 11-Oct-11
Northbound US Hwy 16 (Neck Yoke Rd. to Busted 5 Ct.) FHU Reference Nos.: 10160

ITEM DESCRIPTION	UNIT	QUANTITY	COST	TOTAL
Quantity Items				
Liquid Asphalt (8" depth)	TON	888	\$650	\$577,000
Concrete Sidewalk (6") (Bike Lane)	SF		\$10	\$0
Curb & Gutter	LF		\$40	\$0
Median Cover Material	SF		\$6	\$0
Sign	EA	2	\$720	\$1,000
Signals	EA		\$200,000	\$0
Wildlife Fence	LF	8,700	\$12	\$104,000
Bridge Widening	SF		\$250	\$0
TOTAL COST OF QUANTITY ITEMS:			(A)	\$682,000
Percentage Items				
Removals		3.0%	of A	\$20,000
Earthwork		4.0%	of A	\$27,000
Clearing and Grubbing		5.0%	of A	\$34,000
Striping		3.5%	of A	\$24,000
Construction Signing and Traffic Control		10.0%	of A	\$68,000
Surveying		5.0%	of A	\$34,000
Mobilization		5.0%	of A	\$34,000
TOTAL COST OF CONSTRUCTION BID ITEMS:			(CBI)	\$923,000
Force Account Items				
Utility Relocations		5.0%	of CBI	\$46,000
Contengencies & Misc. Items		20.0%	of CBI	\$185,000
TOTAL COST OF CONSTRUCTION ITEMS:			(CI)	\$1,154,000
Construction Engineering		20.0%	of CI	\$231,000
Design Engineering		10.0%	of CBI	\$92,000
TOTAL IMPROVEMENT COST:				\$1,385,000

Includes asphalt mat, asphalt flush jack, asphalt for prime, asphalt for surface treatment, & asphalt cement. & SAWCUT

Use price for 4" concrete sidewalk
 Sign Post & Sign (\$20(12lf) + 12SF(\$30))

*Note: Right-of-Way and Landscaping are not included in the costs.



OPINION OF PROBABLE COST

In providing opinions of probable construction cost, the Client understands that Felsburg Holt & Ullevig has no control over costs or the price of labor, equipment or materials, or over the Contractor's method of pricing, and that the opinions of probable construction costs provided herein are to be made on the basis of our qualifications and experience. FHU makes no warranty, expressed or implied, as to the accuracy of such opinions as compared to bid or actual costs.

RAPID CITY Prepared By: JMW
 Date: 3-Nov-11
LaCrosse St. (E. North St. to Anamosa St.) FHU Reference Nos.: 10160

ITEM DESCRIPTION	UNIT	QUANTITY	COST	TOTAL
Quantity Items				
Liquid Asphalt (8" depth)	TON	154	\$650	\$100,000
Concrete Sidewalk (6") (Bike Lane)	SF		\$10	\$0
Curb & Gutter	LF	340	\$40	\$14,000
Median Cover Material	SF	246	\$6	\$1,000
Sign	EA		\$720	\$0
RR Cross Arm Gates	EA	1	\$300,000	\$300,000
Signals	EA	1	\$200,000	\$200,000
Bridge Widening	SF		\$250	\$0
TOTAL COST OF QUANTITY ITEMS:			(A)	\$615,000
Percentage Items				
Removals		3.0%	of A	\$18,000
Earthwork		4.0%	of A	\$25,000
Clearing and Grubbing		5.0%	of A	\$31,000
Striping		3.5%	of A	\$22,000
Construction Signing and Traffic Control		10.0%	of A	\$62,000
Surveying		5.0%	of A	\$31,000
Mobilization		5.0%	of A	\$31,000
TOTAL COST OF CONSTRUCTION BID ITEMS:			(CBI)	\$835,000
Force Account Items				
Utility Relocations		5.0%	of CBI	\$42,000
Contengencies & Misc. Items		20.0%	of CBI	\$167,000
TOTAL COST OF CONSTRUCTION ITEMS:			(CI)	\$1,044,000
Construction Engineering		20.0%	of CI	\$209,000
Design Engineering		10.0%	of CBI	\$84,000
TOTAL IMPROVEMENT COST:				\$1,253,000

Includes asphalt mat, asphalt flush jack, asphalt for prime, asphalt for surface treatment, & asphalt cement. & SAWCUT

Use price for 4" concrete sidewalk
 Sign Post & Sign (\$20(12lf) + 12SF(\$30))

*Note: Right-of-Way and Landscaping are not included in the costs.



OPINION OF PROBABLE COST

In providing opinions of probable construction cost, the Client understands that Felsberg Holt & Ullevig has no control over costs or the price of labor, equipment or materials, or over the Contractor's method of pricing, and that the opinions of probable construction costs provided herein are to be made on the basis of our qualifications and experience. FHU makes no warranty, expressed or implied, as to the accuracy of such opinions as compared to bid or actual costs.

RAPID CITY Prepared By: JMW
 Date: 11-Oct-11
W. Omaha St. (Mountain View Rd. to West Blvd.) FHU Reference Nos.: 10160

ITEM DESCRIPTION	UNIT	QUANTITY	COST	TOTAL
Quantity Items				
Liquid Asphalt (8" depth)	TON	0	\$650	\$0
Concrete Sidewalk (6") (Bike Lane)	SF		\$10	\$0
Curb & Gutter	LF		\$40	\$0
Median Cover Material	SF		\$6	\$0
Sign	EA		\$720	\$0
Signals	EA	1	\$200,000	\$200,000
Bridge Widening	SF		\$250	\$0
TOTAL COST OF QUANTITY ITEMS:			(A)	\$200,000
Percentage Items				
Removals		1.5%	of A	\$3,000
Earthwork		0.0%	of A	\$0
Clearing and Grubbing		2.0%	of A	\$4,000
Striping		0.0%	of A	\$0
Construction Signing and Traffic Control		10.0%	of A	\$20,000
Surveying		5.0%	of A	\$10,000
Mobilization		5.0%	of A	\$10,000
TOTAL COST OF CONSTRUCTION BID ITEMS:			(CBI)	\$247,000
Force Account Items				
Utility Relocations		5.0%	of CBI	\$12,000
Contingencies & Misc. Items		20.0%	of CBI	\$49,000
TOTAL COST OF CONSTRUCTION ITEMS:			(CI)	\$308,000
Construction Engineering		20.0%	of CI	\$62,000
Design Engineering		10.0%	of CBI	\$25,000
TOTAL IMPROVEMENT COST:				\$370,000

Includes asphalt mat, asphalt flush jack, asphalt for prime, asphalt for surface treatment, & asphalt cement. & SAWCUT

Use price for 4" concrete sidewalk
 Sign Post & Sign (\$20(12lf) + 12SF(\$30))

*Note: Right-of-Way and Landscaping are not included in the costs.

Rapid City Arterial Safety Study

APPENDIX M PUBLIC MEETING – NOVEMBER 15, 2011

Welcome to the Public Meeting for the Rapid City Arterial Safety Study

November 15, 2011



in conjunction with:

Rapid City Area MPO

City/MPO Project Manager:

Patsy Horton

Rapid City Community Planning
and Development

605.394.4120

patsy.horton@rcgov.org

Consultant Team Project Manager:

Ryan Germeroth

Felsburg Holt & Ullevig

303.721.1440

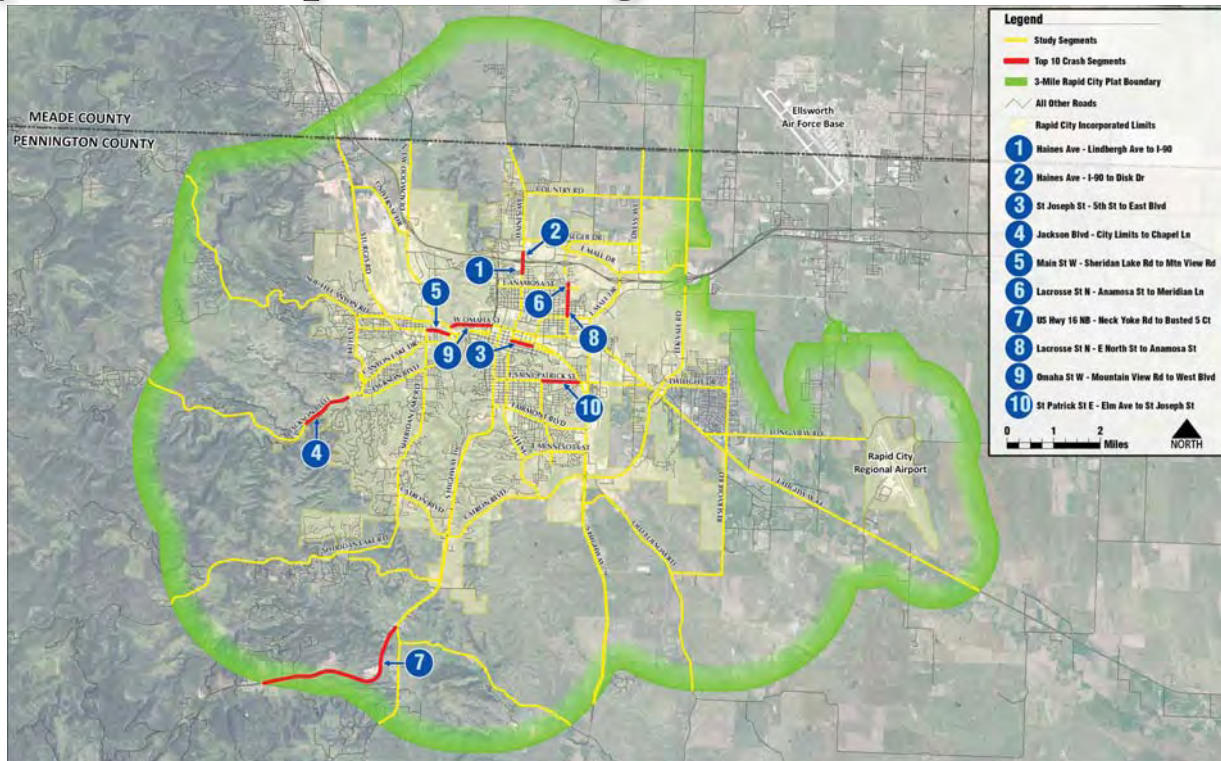
ryan.germeroth@fhueng.com



**FELSBURG
HOLT &
ULLEVIG**

engineering paths to transportation solutions

Study Area and Top 10 Crash Segments



Arterial Safety Study Recommendations

Segment Number	Road Segment Name	Recommended Concept
Segment 1	Haines Ave. (Lindbergh to I-90)	Raised median, traffic signal (if warranted) and improved network grid
Segment 2	Haines Ave. (I-90 to Disk)	Raised median and relocated access
Segment 3	St. Joseph St. (5th to East Blvd)	Removal of parking, traffic signal (if warranted) and striping
Segment 4	Jackson Blvd. (City Limit to Chapel Ln.)	New signs and improving sight distance
Segment 5	W. Main St. (Sheridan Lake Rd. to Mountain View Rd.)	Raised median, traffic signal (if warranted), bike lane and widened cross section
Segment 6	N. LaCrosse St. (Anamosa St. to Meridian Ln.)	Modified access (right-in / right-out)
Segment 7	NB Highway 16 (Neck Yoke to Busted 5 Ct.)	Wildlife fencing, acceleration / deceleration lanes. Rumble strips and safety edge with resurfacing project
Segment 8	LaCrosse St. (E. North St. to Anamosa St.)	Traffic signal (if warranted), RR crossing gates and modified access
Segment 9	W. Omaha St. (Mountain View Rd. to West Blvd.)	Traffic signal (if warranted)
Segment 10	E. St. Patrick St. (Elm Ave. to St. Joseph St.)	Review snow removal. Increase speed enforcement
Fatal Crash Location	US Highway 16 at Enchantment Road	Relocate existing private driveway, install oversized stop signs and additional stop sign on left side of Enchantment Rd. westbound approach
Fatal Crash Location	Deadwood Avenue south of North Plaza Drive	Consider additional speed enforcement
Fatal Crash Location	SD Highway 44 west of Falling Rock Road	Closely monitor due to top 20 severe crash ranking

Please Sign In

NAME	ADDRESS	E-MAIL	PHONE
Mitch USECA	409 DEADWOOD AVE BLACK HILLS POWER	mitch.user@blackhillsco ^{CO}	484-1476
Ritchie Nordstrom	401 E Meade St 01	r.tch@rusdmore.com	721-6398
Justin FAZETA	B.H. FOX NEWS 2000 Skyline Dr.	justinp@blackhillsfox	394-7777 X130
Patsy Horton	C/RC	patsy.horton@rcgov.org	394-4120
Vicki Alexander		Vicki.alexander@rcgov.org	
Jim Petersen	1203 11th St Rapid City SD	Petersen100@cs.com	342-6245
Kip Harrington	C/RC		
Kevin Woster	RC Journal	Kevin.woster@lee.net	394-8413
Michael McMahon	City of Box Elder	mmcmahon@boxelder.us	923-1404
Bob Plunk	3215 Wisconsin Ave RAPID CITY SD 57701	TOLMANCLANRAPIDCITY@YANBO.COM	342-7446

Comment Form

We look forward to hearing your ideas and comments tonight on arterial roadway safety within Rapid City. Please provide comments on any of the top ten arterial crash segments presented tonight or any general comments you may have about arterial roadway safety.

Segment 1 – Haines Avenue (Lindbergh Avenue to I-90) _____

Segment 2 – Haines Avenue (I-90 to Disk Drive) _____

Segment 3 – Saint Joseph Street (5th Street to East Boulevard) _____

Segment 4 – SD 44 (Jackson Boulevard) (City Limit to Chapel Lane) _____

Segment 5 – W. Main Street (Sheridan Lake Rd. to Mountain View Rd.) _____

Segment 6 – LaCrosse Street (Anamosa Street to Meridian Lane) _____

Segment 7 – Northbound US Highway 16 (Neck Yoke Road to Busted 5 Court) _____

Segment 8 – LaCrosse Street (E. North Street to Anamosa Street) _____

Segment 9 – W. Omaha Street (Mountain View Road to West Boulevard) _____

Segment 10 – St. Patrick Street (Elm Avenue to St. Joseph Street) _____

General Comments North bound on ST only one left turn lane to west bound on Omaha - room for two turning lanes - why not use 2nd lane

FLASHING YELLOW ARROW - HAS BEEN IMPLEMENTED FOR 1-2 YRS STUDIES SHOW NO HUGE DIFFERENCE - WHY NOT ALLOW TRAFFIC TO FLOW IF ABLE ... BELLE FOURNE MA LEFT TURN ARROWS

Your Name: BOB JOLMAN

Address: 3215 WISCONSIN AVE RAPID CITY SD 57501

Phone # (optional) 342-7446 (H) 787-5268 (W)

Thank you

Return Comments to:
Ryan Germeroth P: (303)721-1440
Felsburg Holt & Ullevig F: (303) 721-0832
6300 South Syracuse Way, Ste. 600 E: ryan.germeroth@fhueng.com
Centennial, CO 80111



Comment Form

We look forward to hearing your ideas and comments tonight on arterial roadway safety within Rapid City. Please provide comments on any of the top ten arterial crash segments presented tonight or any general comments you may have about arterial roadway safety.

Segment 1 – Haines Avenue (Lindbergh Avenue to I-90) extending Wood Ave is a great idea

Segment 2 – Haines Avenue (I-90 to Disk Drive)

Segment 3 – Saint Joseph Street (5th Street to East Boulevard)

Segment 4 – SD 44 (Jackson Boulevard) (City Limit to Chapel Lane)

Segment 5 – W. Main Street (Sheridan Lake Rd. to Mountain View Rd.)

Segment 6 – LaCrosse Street (Anamosa Street to Meridian Lane)

Segment 7 – Northbound US Highway 16 (Neck Yoke Road to Busted 5 Court)

Segment 8 – LaCrosse Street (E. North Street to Anamosa Street)

Segment 9 – W. Omaha Street (Mountain View Road to West Boulevard)

Segment 10 – St. Patrick Street (Elm Avenue to St. Joseph Street)

General Comments I saw no mention of speed limit reductions in any of the segments - Haines Avenue is a 30mph zone south of segments 1 & 2 - extending this through these segments should reduce the frequency and severity of accidents
You may hand in this sheet before you leave tonight or mail, fax or e-mail it by November 29, 2011 to the contact below.

Your Name: Michael McMahon

Address: 1412 Racine St

Phone # (optional) work 923-1404

Return Comments to:

Ryan Germeroth
Felsburg Holt & Ullevig
6300 South Syracuse Way, Ste. 600
Centennial, CO 80111

P: (303)721-1440
F: (303) 721-0832
E: ryan.germeroth@fhueng.com