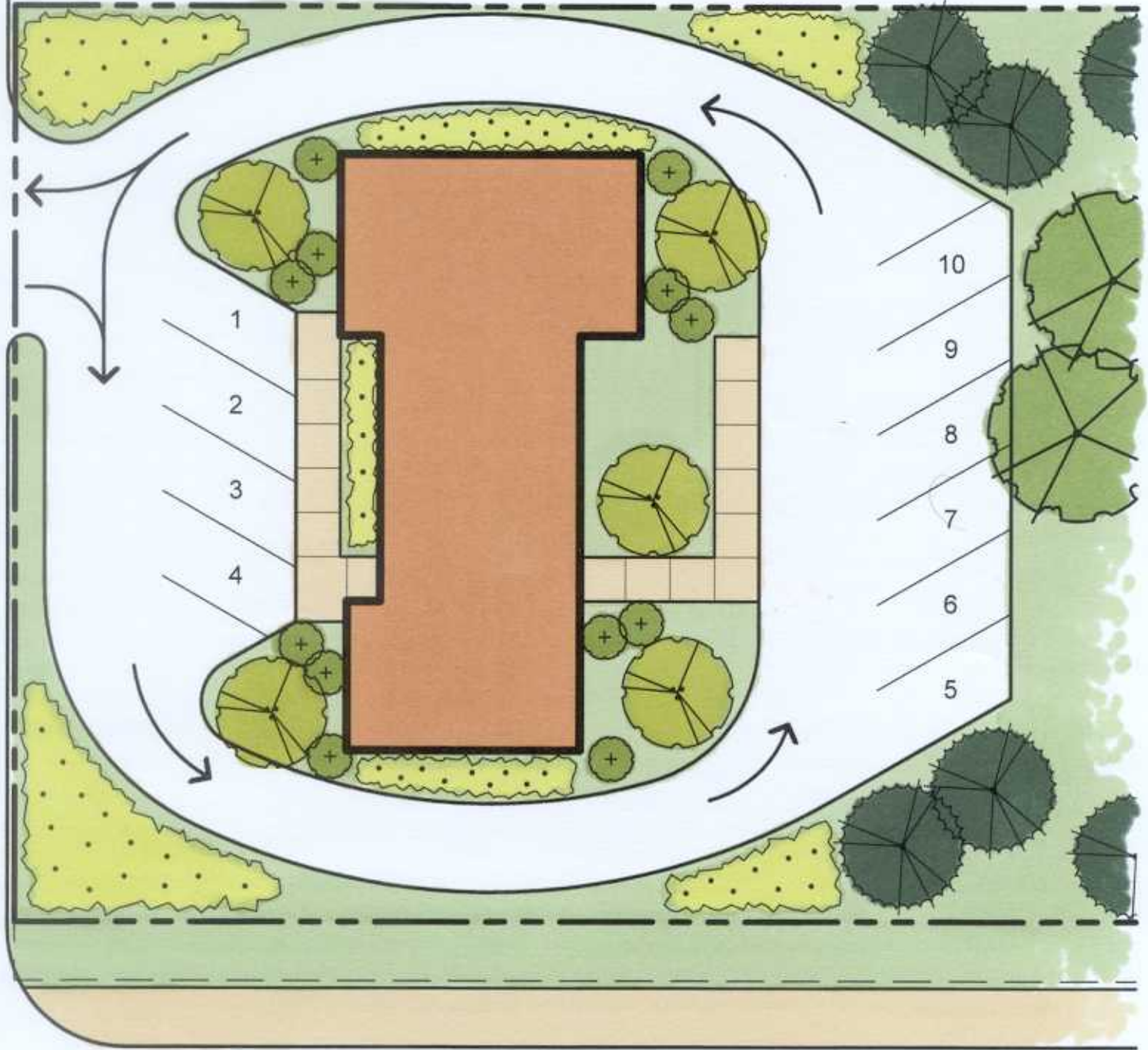


WILDWOOD DRIVE



SHERIDAN LAKE ROAD

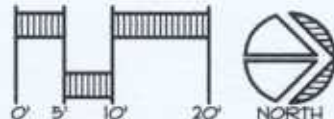
Option No. 1

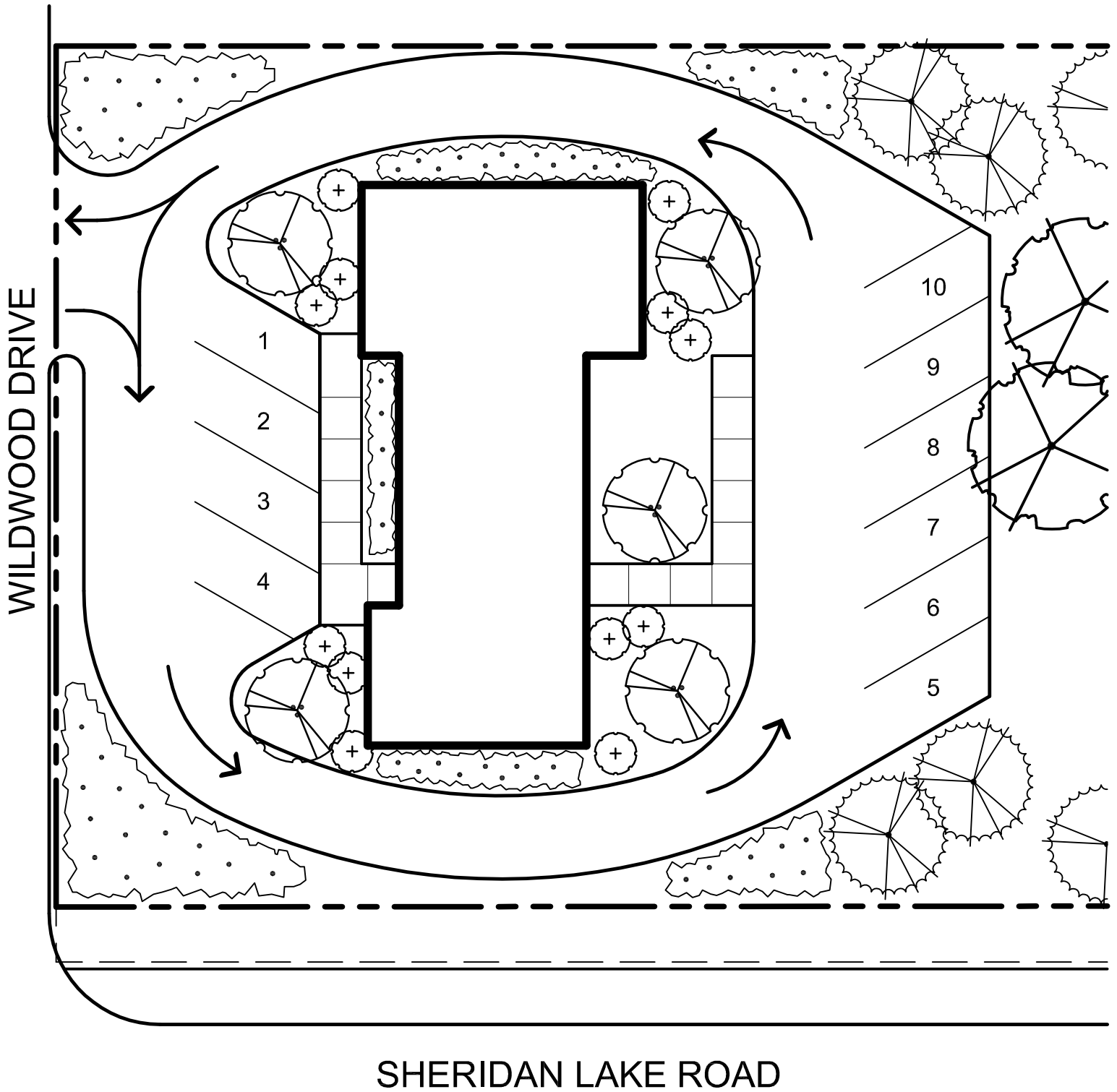
Sundby Office Parking

Rapid City, South Dakota

PROJECT NO.: R12-379
 FILE NAME: SundbySD1.dwg
 DATE: January 27, 2012

NOTE REGARDING SITE PLAN DATA:
 THE SITE INFORMATION SHOWN ON THIS SITE PLAN IS COMPILED FROM VARIOUS MAPPING SOURCES NECESSARY FOR PLANNING WORK. SITE CONDITIONS SHOWN DO NOT REPRESENT A SURVEY OF THE LAND AND MAY NOT ACCURATELY DEPICT ALL ON-SITE CONDITIONS. IT IS THE RESPONSIBILITY OF THE USER TO VERIFY THE ACCURACY OF THE DATA INCLUDED IN THIS SITE PLAN.





SHERIDAN LAKE ROAD

Option No. 1

Sundby Office Parking

Rapid City, South Dakota

NOTE REGARDING SITE PLAN DATA:
 THE SITE INFORMATION SHOWN ON THIS SITE PLAN IS COMPILED FROM VARIOUS MAPPING SOURCES NECESSARY FOR PLANNING WORK. SITE CONDITIONS SHOWN DO NOT REPRESENT A SURVEY OF THE LAND AND MAY NOT ACCURATELY DEPICT ALL ON-SITE CONDITIONS. IT IS THE RESPONSIBILITY OF THE USER TO VERIFY THE ACCURACY OF THE DATA INCLUDED IN THIS SITE PLAN.

PROJECT NO.: R12-319
 FILE NAME: SundbySD1.dwg
 DATE: January 27, 2012

