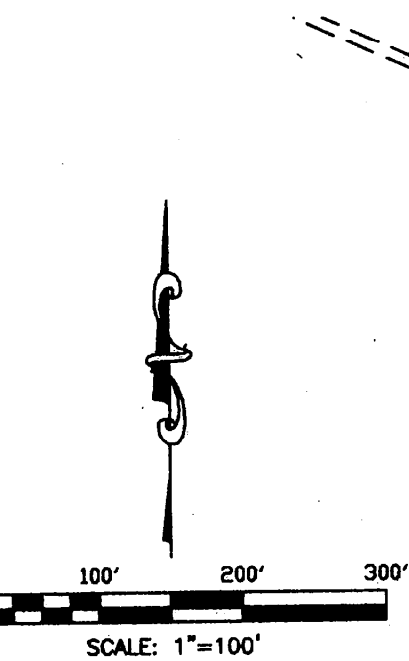
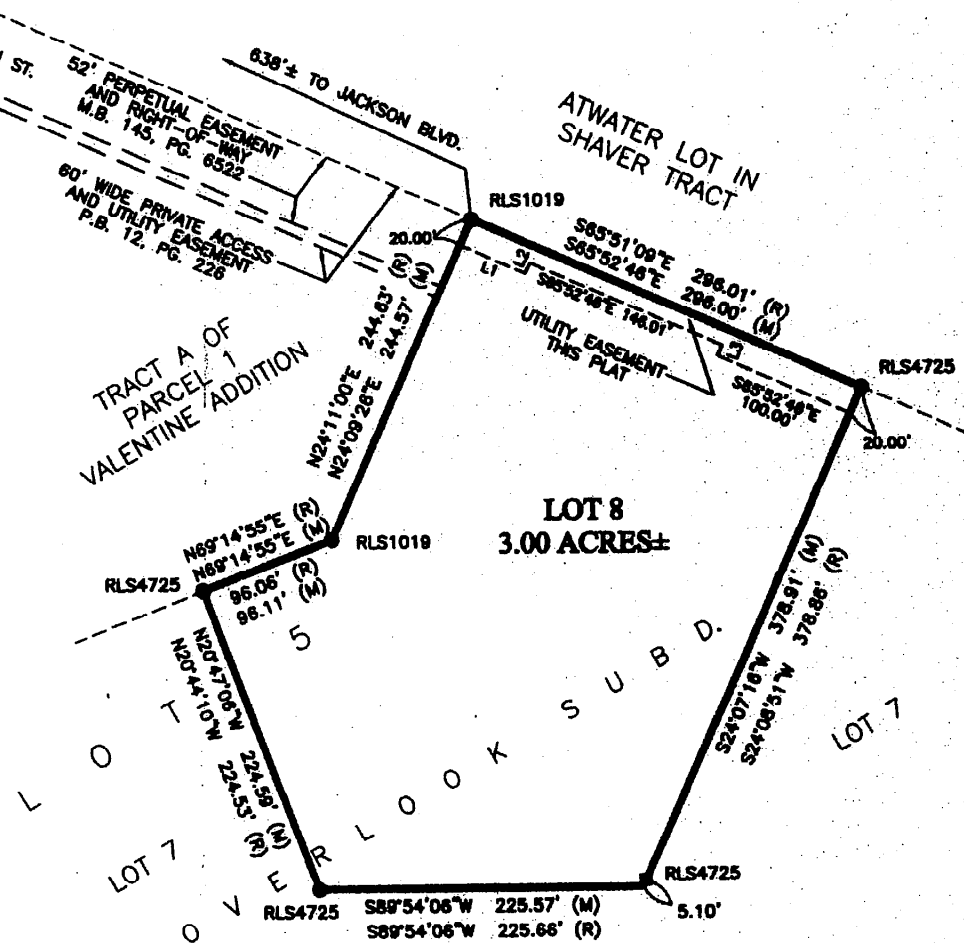


PLAT OF LOT 8 OF OVERLOOK SUBDIVISION, AND UTILITY EASEMENT

FORMERLY A PORTION OF LOT 5, ~~OVERLOOK SUBDIVISION~~
LOCATED IN THE SW1/4NW1/4 OF SECTION 2, T1N, R7E, BHM,
RAPID CITY, PENNINGTON COUNTY, SOUTH DAKOTA



LINE	BEARING	DISTANCE
L1	S65°52'48"E	50.00'
L2	N24°09'28"E	8.00'
L3	S24°09'28"W	8.00'



OWNER/DEVELOPER:
OLSEN DEVELOPMENT COMPANY, INC.
PO BOX 795
BLACK HAWK, SD 57718

AS NOTED
NOTED

THIS PLAT: 3.00 ACRES±.
S PLAT: 3.00 ACRES±.
THIS PLAT: 0.00 ACRES±.

UTILITY EASEMENTS ARE HEREBY ESTABLISHED 8' WIDE ON
ALL LOT LINES AND RIGHT-OF-WAY. (EXCEPT WHERE MAJOR
ARE LOCATED).

EASEMENT SHOWN HEREON SHALL BE KEPT FREE OF ALL
LOADS BUT NOT LIMITED TO BUILDINGS, WALLS, FENCES, HEDGES,
AND OTHER STRUCTURES. THESE EASEMENTS GRANT TO ALL PUBLIC AUTHORITIES THE
RIGHT TO OPERATE, MAINTAIN, INSPECT AND REPAIR SUCH
STRUCTURES AS IT DEEMS EXPEDIENT TO FACILITATE DRAINAGE

TO MAINTAIN EXISTING DRAINAGE FACILITIES IN ACCORDANCE
WITH ENGINEERING PLANS.

SECTION 11-3-8.1 AND 11-3-8.2, THE DEVELOPER OF THE
SUBDIVISION WITHIN THIS PLAT SHALL BE RESPONSIBLE FOR PROTECTING
THE STATE, INCLUDING GROUNDWATER, LOCATED TO OR WITHIN
THE SUBDIVISION FROM POLLUTION FROM SEWERAGE FROM SUCH SUBDIVISION
AND SUCH PROTECTIONS CONFORM TO AND FOLLOW ALL
REQUIREMENTS OF THE SOUTH DAKOTA DEPARTMENT OF ENVIRONMENTAL AND
NATURAL RESOURCES RELATING TO SAME.

TO BE GEODETIC NORTH.

CERTIFICATE OF COMMUNITY PLANNING AND DEVELOPMENT SERVICES DIRECTOR
I, COMMUNITY PLANNING AND DEVELOPMENT SERVICES DIRECTOR OF THE CITY OF RAPID
CITY, HAVE REVIEWED THIS PLAT AND HAVE FOUND IT TO CONFORM TO THE SUBDIVISION
REQUIREMENTS OF CHAPTER 16.08.035 OF THE RAPID CITY MUNICIPAL CODE AND AS
SUCH I HAVE APPROVED THIS PLAT AS FINAL PLAT.

22ND DAY OF DECEMBER, 2011.

Bret C. [Signature]
COMMUNITY PLANNING AND DEVELOPMENT SERVICES DIRECTOR OF THE CITY OF RAPID
CITY

CERTIFICATE OF HIGHWAY OR STREET AUTHORITY
THE LOCATION OF THE PROPOSED LOT LINES WITH RESPECT TO THE HIGHWAY OR STREET
AS SHOWN HEREON IS HEREBY APPROVED. ANY APPROACHES OR ACCESS TO THE
HIGHWAY OR STREET WILL REQUIRE ADDITIONAL APPROVAL.

DATED THIS 21st DAY OF DECEMBER, 2011.

[Signature]
HIGHWAY/STREET AUTHORITY

CERTIFICATE OF DIRECTOR OF EQUALIZATION
I, DIRECTOR OF EQUALIZATION OF PENNINGTON COUNTY, DO HEREBY CERTIFY THAT I
HAVE ON RECORD IN MY OFFICE A COPY OF THE WITHIN DESCRIBED PLAT.