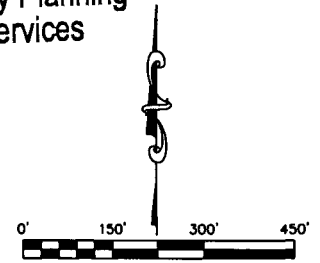
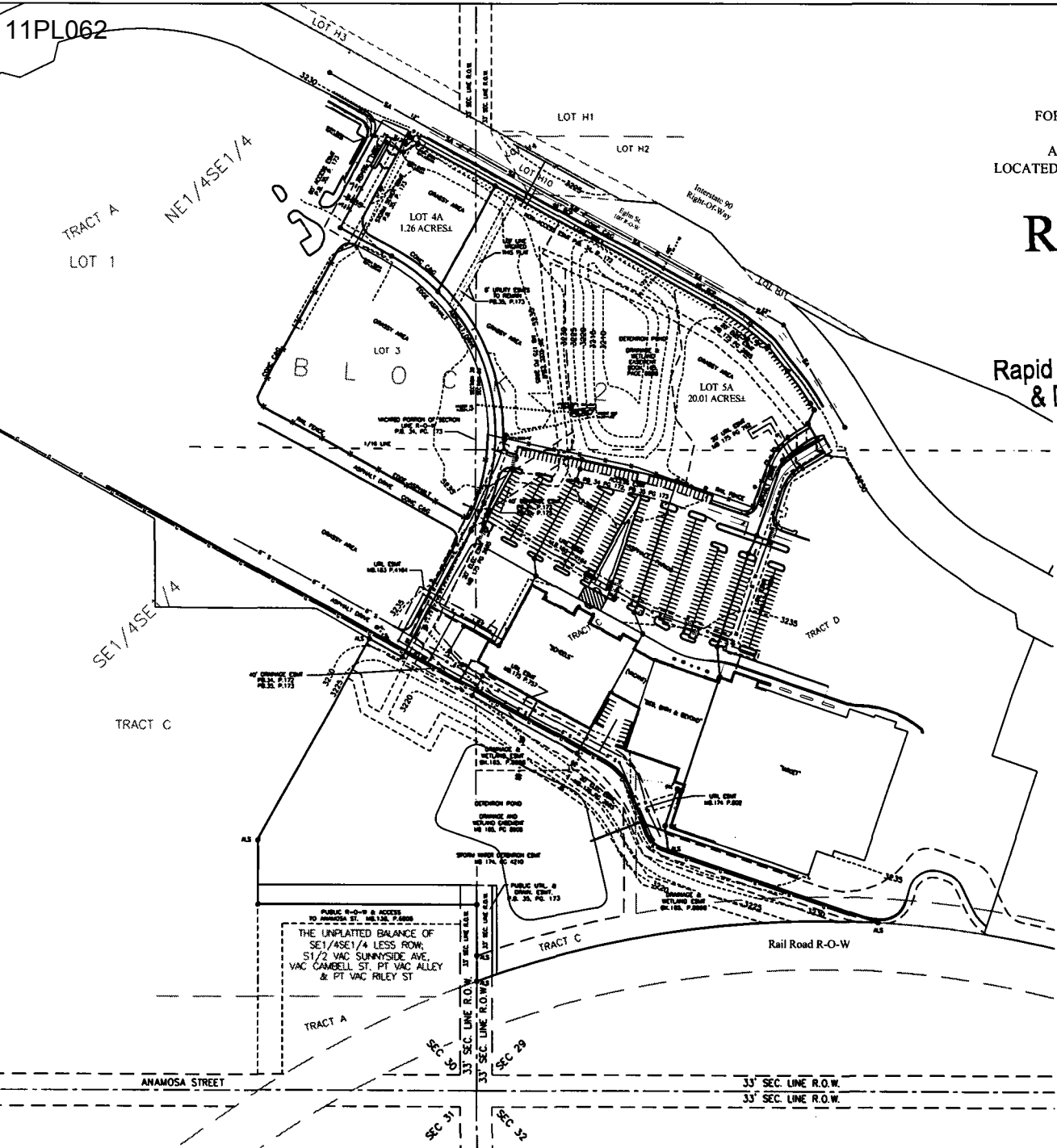


**SITE PLAN**  
**OF PROPOSED LOTS 4A AND 5A, BLOCK 2**  
**OF RUSHMORE CROSSING SUBDIVISION,**  
 FORMERLY LOTS 4 AND 5 OF BLOCK 2, NORTH 1/2 VACATED SUNNYSIDE AVENUE,  
 EAST 1/2 VACATED RILEY AVENUE  
 AND THE VACATED PORTION OF CAMBELL STREET ADJACENT TO SAID LOT 5,  
 LOCATED IN THE W1/2SW1/4 OF SECTION 29, AND THE E1/2SE1/4 OF SECTION 30, T2N, R8E, BHM,  
 RAPID CITY, PENNINGTON COUNTY, SOUTH DAKOTA

# RECEIVED

NOV 14 2011

Rapid City Community Planning  
& Development Services



- LEGEND**
- BUILDING LINE
  - CLEANOUT
  - DROP INLET
  - ELECTRIC BOX
  - FIRE HYDRANT
  - LAMP POLE
  - POST, BALLARD
  - POWER POLE
  - SEWER MANHOLE
  - SIGN
  - TELEPHONE BOX
  - TELEPHONE MANHOLE
  - TELEPHONE SERVICE
  - VAULT
  - WATER VALVE
- 
- G GAS LINE
  - SA SANITARY LINE
  - S STORM LINE
  - W WATER LINE
  - B BOUNDARY LINE
  - S SECTION LINE
  - A ADJOINING LOT LINE
  - E EASEMENT LINE
  - C CONTOUR LINE

**NOTES:**  
 1. ALL IMPROVEMENTS SHOWN HEREON ARE EXISTING. NO NEW DEVELOPMENT PROPOSED AS PART OF THIS PLAT.  
 2. BASIS OF BEARING IS GEODETIC NORTH.  
 3. BUILDING SETBACK LINES ARE PER PREVIOUSLY APPROVED PUD.

	<b>PREPARED BY:</b> <b>ARLETH &amp; ASSOCIATES</b>	24 CLIFF STREET DEADWOOD, SD 57732 605-578-1637	JOB NO. 8530	DATE: <u>NOVEMBER 10, 2011</u>	APPROVED: <u>JMA</u>
				REV: _____	DRAWN: <u>FD</u>
				SCALE: 1" = 150'	DRAWING: <u>LOTS 4A 5A.dwg</u>