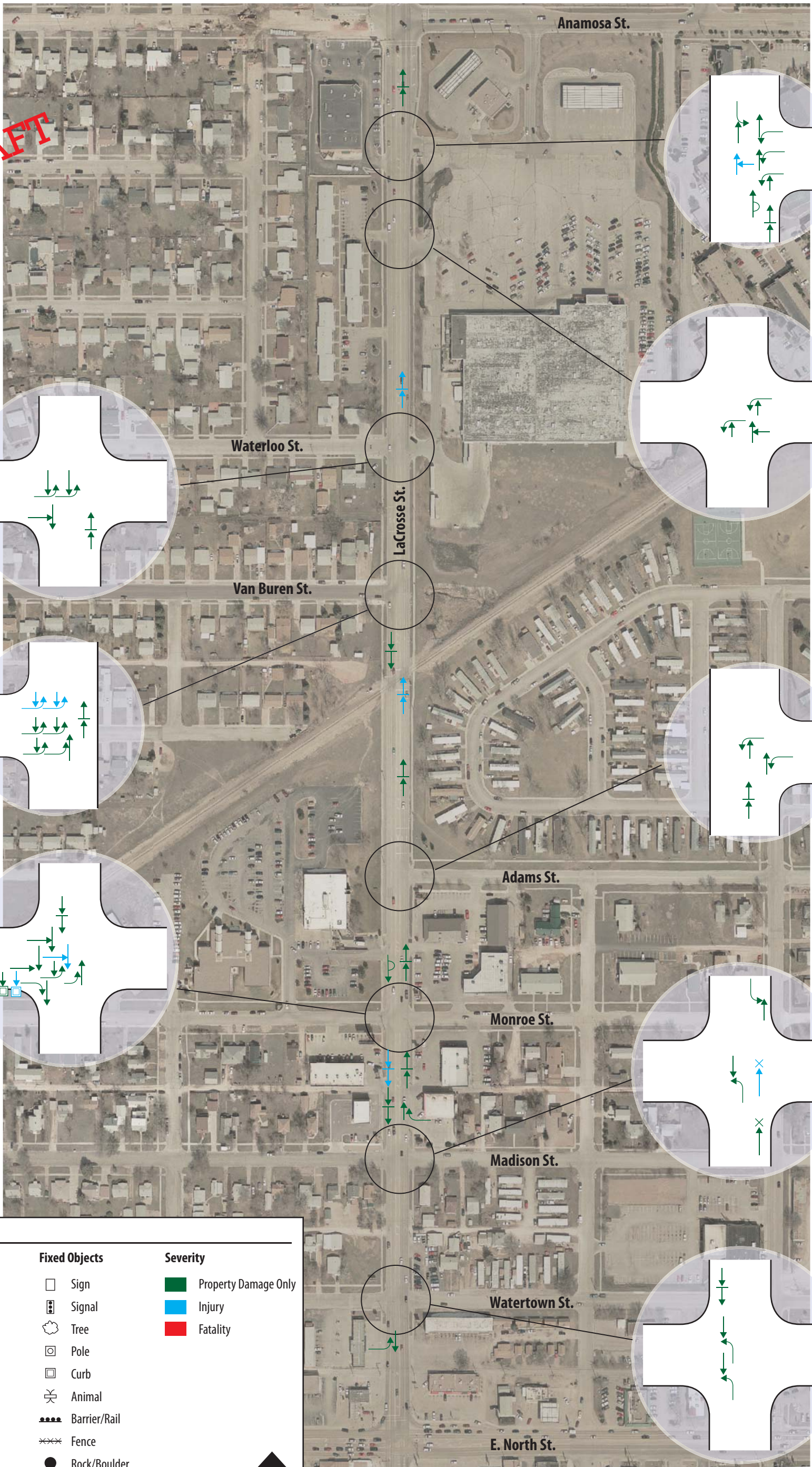


APPENDIX I

**LACROSSE STREET – EAST NORTH STREET TO
ANAMOSA**

DRAFT



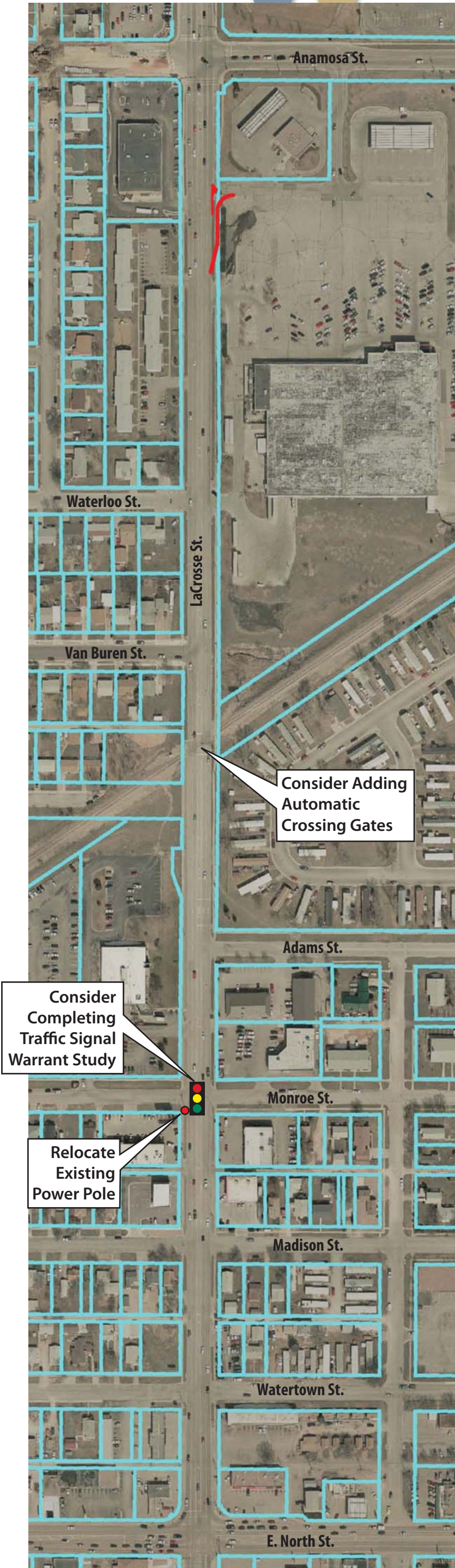
LEGEND

Vehicle Movement	Fixed Objects	Severity
← Straight	□ Sign	■ Property Damage Only
⏹ Stopped	📡 Signal	■ Injury
↩ Overturn	🌳 Tree	■ Fatality
↪ Sideswipe	📍 Pole	
🚗 Parked	📏 Curb	
↪ Right Turn	🐾 Animal	
↩ Left Turn	🚧 Barrier/Rail	
↺ U-Turn	🌿 Fence	
× Pedestrian	● Rock/Boulder	
🚲 Bicycle		

NORTH

Segment 8
LaCrosse Street -
E. North Street to Anamosa Street

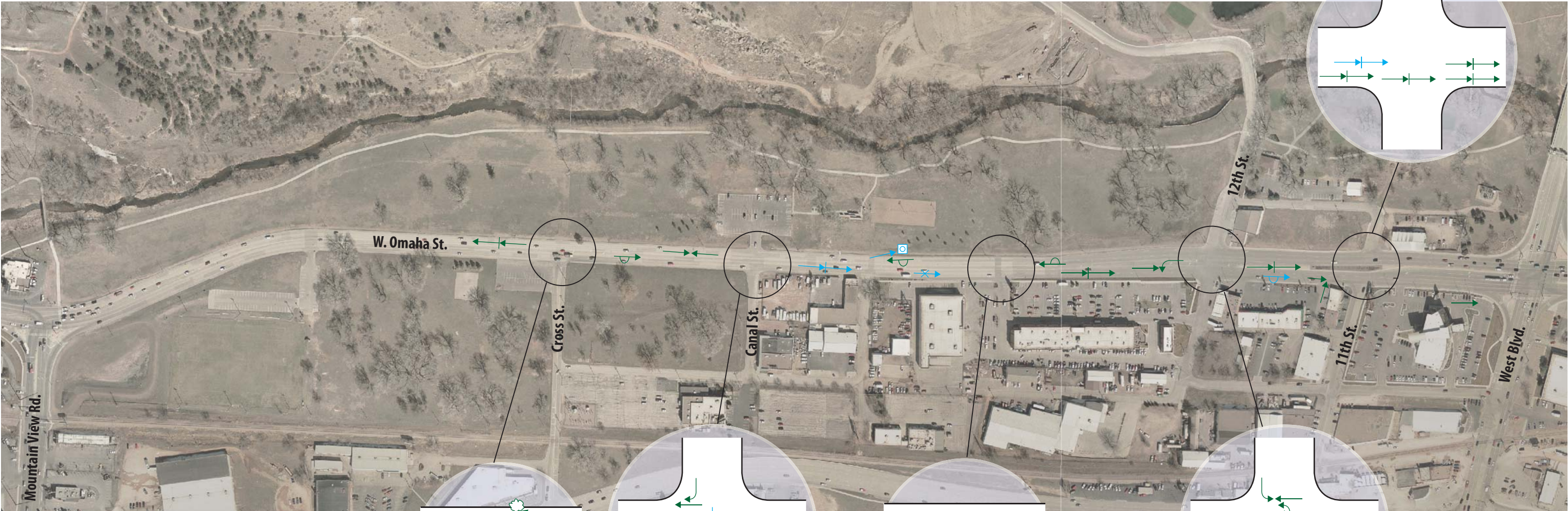
DRAFT



NORTH

**APPENDIX J WEST OMAHA STREET – MOUNTAIN VIEW TO WEST
BOULEVARD**

DRAFT



LEGEND

Vehicle Movement

- Straight
- Stopped
- Overturn
- Sideswipe
- Parked
- Right Turn
- Left Turn
- U-Turn
- Pedestrian
- Bicycle

Fixed Objects

- Sign
- Signal
- Tree
- Pole
- Curb
- Animal
- Barrier/Rail
- Fence
- Rock/Boulder

Severity

- Property Damage Only
- Injury
- Fatality

Segment 9
W. Omaha Street -
Mountain View Road to West Boulevard

DRAFT



NORTH

APPENDIX K ST. PATRICK STREET – ELM TO ST. JOSEPH

DRAFT




LEGEND

Vehicle Movement
Straight
Stopped
Overturn
Sideswipe
Parked
Right Turn
Left Turn
U-Turn
Pedestrian
Bicycle

Fixed Objects
Sign
Signal
Tree
Pole
Curb
Animal
Barrier/Rail
Fence
Rock/Boulder

Severity
Property Damage Only
Injury
Fatality

**NORTH**


Segment 10
St. Patrick Street -
Elm Avenue to St. Joseph Street

DRAFT



APPENDIX L OPINION OF PROBABLE COST TABLES

DRAFT


 <p>FELSBURG HOLT & ULLEVIG</p> <p><i>engineering paths to transportation solutions</i></p>	<p align="center">OPINION OF PROBABLE COST</p> <p>In providing opinions of probable construction cost, the Client understands that Felsburg Holt & Ullevig has no control over costs or the price of labor, equipment or materials, or over the Contractor's method of pricing, and that the opinions of probable construction costs provided herein are to be made on the basis of our qualifications and experience. FHU makes no warranty, expressed or implied, as to the accuracy of such opinions as compared to bid or actual costs.</p>			
<p>RAPID CITY</p>	<p align="right">Prepared By: JMW</p>			
<p>Haines (Linbergh Ave. to I-90)</p>	<p align="right">Date: 11-Oct-11</p>			
	<p align="right">FHU Reference Nos.: 10160</p>			
ITEM DESCRIPTION	UNIT	QUANTITY	COST	TOTAL
Quantity Items				
Liquid Asphalt (8" depth)	TON	665	\$650	\$432,000
Concrete Sidewalk (6") (Bike Lane)	SF		\$10	\$0
Curb & Gutter	LF	2,751	\$40	\$110,000
Median Cover Material	SF	4,002	\$6	\$24,000
Sign	EA		\$720	\$0
Signals	EA	1	\$200,000	\$200,000
Bridge Widening	SF		\$250	\$0
TOTAL COST OF QUANTITY ITEMS:			(A)	\$766,000
Percentage Items				
Removals		3.0%	of A	\$23,000
Earthwork		4.0%	of A	\$31,000
Clearing and Grubbing		5.0%	of A	\$38,000
Striping		3.5%	of A	\$27,000
Construction Signing and Traffic Control		10.0%	of A	\$77,000
Surveying		5.0%	of A	\$38,000
Mobilization		5.0%	of A	\$38,000
TOTAL COST OF CONSTRUCTION BID ITEMS:			(CBI)	\$1,038,000
Force Account Items				
Utility Relocations		5.0%	of CBI	\$52,000
Contengencies & Misc. Items		20.0%	of CBI	\$208,000
TOTAL COST OF CONSTRUCTION ITEMS:			(CI)	\$1,298,000
Construction Engineering		20.0%	of CI	\$260,000
Design Engineering		10.0%	of CBI	\$104,000
TOTAL IMPROVEMENT COST:				\$1,558,000

*Note: Right-of-Way and Landscaping are not included in the costs.

Includes asphalt mat, asphalt flush jack, asphalt for prime, asphalt for surface treatment, & asphalt cement. & SAWCUT

Use price for 4" concrete sidewalk
Sign Post & Sign (\$20(12lf) + 12SF(\$30))


DRAFT

 FELSBERG HOLT & ULLEVIG <i>engineering paths to transportation solutions</i>		OPINION OF PROBABLE COST In providing opinions of probable construction cost, the Client understands that Felsburg Holt & Ullevig has no control over costs or the price of labor, equipment or materials, or over the Contractor's method of pricing, and that the opinions of probable construction costs provided herein are to be made on the basis of our qualifications and experience. FHU makes no warranty, expressed or implied, as to the accuracy of such opinions as compared to bid or actual costs.		
RAPID CITY Haines (I-90 to Disk Dr.)		Prepared By: JMW Date: 3-Nov-11 FHU Reference Nos.: 10160		
ITEM DESCRIPTION	UNIT	QUANTITY	COST	TOTAL
Quantity Items				
Liquid Asphalt (8" depth)	TON	198	\$650	\$129,000
Concrete Sidewalk (6") (Bike Lane)	SF		\$10	\$0
Curb & Gutter	LF	1,711	\$40	\$68,000
Median Cover Material	SF	5,807	\$6	\$35,000
Sign	EA		\$720	\$0
Signals	EA		\$200,000	\$0
Bridge Widening	SF		\$250	\$0
TOTAL COST OF QUANTITY ITEMS:			(A)	\$232,000
Percentage Items				
Removals		3.0%	of A	\$7,000
Earthwork		4.0%	of A	\$9,000
Clearing and Grubbing		5.0%	of A	\$12,000
Striping		3.5%	of A	\$8,000
Construction Signing and Traffic Control		10.0%	of A	\$23,000
Surveying		5.0%	of A	\$12,000
Mobilization		5.0%	of A	\$12,000
TOTAL COST OF CONSTRUCTION BID ITEMS:			(CBI)	\$315,000
Force Account Items				
Utility Relocations		5.0%	of CBI	\$16,000
Contingencies & Misc. Items		20.0%	of CBI	\$63,000
TOTAL COST OF CONSTRUCTION ITEMS:			(CI)	\$394,000
Construction Engineering		20.0%	of CI	\$79,000
Design Engineering		10.0%	of CBI	\$32,000
TOTAL IMPROVEMENT COST:				\$473,000

*Note: Right-of-Way and Landscaping are not included in the costs.

Includes asphalt mat, asphalt flush jack, asphalt for prime, asphalt for surface treatment, & asphalt cement. & SAWCUT

Use price for 4" concrete sidewalk
 Sign Post & Sign (\$20(12lf) + 12SF(\$30))


 <div> FELSBURG HOLT & ULLEVIG <i>engineering paths to transportation solutions</i> </div>		OPINION OF PROBABLE COST In providing opinions of probable construction cost, the Client understands that Felsburg Holt & Ullevig has no control over costs or the price of labor, equipment or materials, or over the Contractor's method of pricing, and that the opinions of probable construction costs provided herein are to be made on the basis of our qualifications and experience. FHU makes no warranty, expressed or implied, as to the accuracy of such opinions as compared to bid or actual costs.		
RAPID CITY		Prepared By: JMW		
Saint Joseph St. (5th St. to East Blvd.)		Date: 11-Oct-11		
		FHU Reference Nos.: 10160		
ITEM DESCRIPTION	UNIT	QUANTITY	COST	TOTAL
Quantity Items				
Liquid Asphalt (8" depth)	TON	0	\$650	\$0
Concrete Sidewalk (6") (Bike Lane)	SF		\$10	\$0
Curb & Gutter	LF		\$40	\$0
Median Cover Material	SF		\$6	\$0
Sign	EA		\$720	\$0
Signals	EA	1	\$200,000	\$200,000
Bridge Widening	SF		\$250	\$0
TOTAL COST OF QUANTITY ITEMS:			(A)	\$200,000
Percentage Items				
Removals		3.0%	of A	\$6,000
Earthwork		0.0%	of A	\$0
Clearing and Grubbing		0.0%	of A	\$0
Striping		7.0%	of A	\$14,000
Construction Signing and Traffic Control		10.0%	of A	\$20,000
Surveying		5.0%	of A	\$10,000
Mobilization		5.0%	of A	\$10,000
TOTAL COST OF CONSTRUCTION BID ITEMS:			(CBI)	\$260,000
Force Account Items				
Utility Relocations		5.0%	of CBI	\$13,000
Contingencies & Misc. Items		20.0%	of CBI	\$52,000
TOTAL COST OF CONSTRUCTION ITEMS:			(CI)	\$325,000
Construction Engineering		20.0%	of CI	\$65,000
Design Engineering		10.0%	of CBI	\$26,000
TOTAL IMPROVEMENT COST:				\$390,000

*Note: Right-of-Way and Landscaping are not included in the costs.

Includes asphalt mat, asphalt flush jack, asphalt for prime, asphalt for surface treatment, & asphalt cement. & SAWCUT

Use price for 4" concrete sidewalk
Sign Post & Sign (\$20(12lf) + 12SF(\$30))

DRAFT


 <p>FELSBERG HOLT & ULLEVIG</p> <p><i>engineering paths to transportation solutions</i></p>		<p align="center">OPINION OF PROBABLE COST</p> <p>In providing opinions of probable construction cost, the Client understands that Felsberg Holt & Ullevig has no control over costs or the price of labor, equipment or materials, or over the Contractor's method of pricing, and that the opinions of probable construction costs provided herein are to be made on the basis of our qualifications and experience. FHU makes no warranty, expressed or implied, as to the accuracy of such opinions as compared to bid or actual costs.</p>		
<p>RAPID CITY</p> <p>Jackson Blvd. (City Limit to Chapel Lane)</p>		<p>Prepared By: JMW Date: 11-Oct-11 FHU Reference Nos.: 10160</p>		
ITEM DESCRIPTION	UNIT	QUANTITY	COST	TOTAL
Quantity Items				
Liquid Asphalt (8" depth)	TON	0	\$650	\$0
Concrete Sidewalk (6") (Bike Lane)	SF		\$10	\$0
Curb & Gutter	LF		\$40	\$0
Median Cover Material	SF		\$6	\$0
Sign	EA	1	\$720	\$1,000
Signals	EA		\$200,000	\$0
Bridge Widening	SF		\$250	\$0
TOTAL COST OF QUANTITY ITEMS:			(A)	\$1,000
Percentage Items				
Removals		3.0%	of A	\$0
Earthwork		4.0%	of A	\$0
Clearing and Grubbing				\$5,000
Striping		3.5%	of A	\$0
Construction Signing and Traffic Control		10.0%	of A	\$0
Surveying		5.0%	of A	\$0
Mobilization		5.0%	of A	\$0
TOTAL COST OF CONSTRUCTION BID ITEMS:			(CBI)	\$6,000
Force Account Items				
Utility Relocations		5.0%	of CBI	\$0
Contengencies & Misc. Items		20.0%	of CBI	\$1,000
TOTAL COST OF CONSTRUCTION ITEMS:			(CI)	\$7,000
Construction Engineering		20.0%	of CI	\$1,000
Design Engineering		10.0%	of CBI	\$1,000
TOTAL IMPROVEMENT COST:				\$8,000

Includes asphalt mat, asphalt flush jack, asphalt for prime, asphalt for surface treatment, & asphalt cement. & SAWCUT

Use price for 4" concrete sidewalk
Sign Post & Sign (\$20(12lf) + 12SF(\$30))

*Note: Right-of-Way and Landscaping are not included in the costs.


DRAFT

 <p>FELSBERG HOLT & ULLEVIG</p> <p><i>engineering paths to transportation solutions</i></p>		<p align="center">OPINION OF PROBABLE COST</p> <p>In providing opinions of probable construction cost, the Client understands that Felsberg Holt & Ullevig has no control over costs or the price of labor, equipment or materials, or over the Contractor's method of pricing, and that the opinions of probable construction costs provided herein are to be made on the basis of our qualifications and experience. FHU makes no warranty, expressed or implied, as to the accuracy of such opinions as compared to bid or actual costs.</p>		
RAPID CITY		Prepared By: JMW		
		Date: 11-Oct-11		
W. Main St. (Sheridan Lake Rd. to Mountain View Rd.)		FHU Reference Nos.: 10160		
ITEM DESCRIPTION	UNIT	QUANTITY	COST	TOTAL
Quantity Items				
Liquid Asphalt (8" depth)	TON	2,446	\$650	\$1,590,000
Concrete Sidewalk (6")	SF	28,610	\$10	\$286,000
Curb & Gutter	LF	9,992	\$40	\$400,000
Median Cover Material	SF	14,767	\$6	\$89,000
Sign	EA		\$720	\$0
Signals	EA	1	\$200,000	\$200,000
Bridge Widening	SF	6,000	\$250	\$1,500,000
TOTAL COST OF QUANTITY ITEMS:			(A)	\$4,065,000
Percentage Items				
Removals		3.0%	of A	\$122,000
Earthwork		4.0%	of A	\$163,000
Clearing and Grubbing		5.0%	of A	\$203,000
Striping		3.5%	of A	\$142,000
Construction Signing and Traffic Control		10.0%	of A	\$407,000
Surveying		5.0%	of A	\$203,000
Mobilization		5.0%	of A	\$203,000
TOTAL COST OF CONSTRUCTION BID ITEMS:			(CBI)	\$5,508,000
Force Account Items				
Utility Relocations		5.0%	of CBI	\$275,000
Contengencies & Misc. Items		20.0%	of CBI	\$1,102,000
TOTAL COST OF CONSTRUCTION ITEMS:			(CI)	\$6,885,000
Construction Engineering		20.0%	of CI	\$1,377,000
Design Engineering		10.0%	of CBI	\$551,000
TOTAL IMPROVEMENT COST:				\$8,262,000

Includes asphalt mat, asphalt flush jack, asphalt for prime, asphalt for surface treatment, & asphalt cement. & SAWCUT

Use price for 4" concrete sidewalk
Sign Post & Sign (\$20(12lf) + 12SF(\$30))

*Note: Right-of-Way and Landscaping are not included in the costs.


 <div> FELSBERG HOLT & ULLEVIG <i>engineering paths to transportation solutions</i> </div>		OPINION OF PROBABLE COST In providing opinions of probable construction cost, the Client understands that Felsberg Holt & Ullevig has no control over costs or the price of labor, equipment or materials, or over the Contractor's method of pricing, and that the opinions of probable construction costs provided herein are to be made on the basis of our qualifications and experience. FHU makes no warranty, expressed or implied, as to the accuracy of such opinions as compared to bid or actual costs.		
RAPID CITY		Prepared By: JMW		
LaCrosse St. (Anamosa St. to Meridian Lane)		Date: 3-Nov-11		
		FHU Reference Nos.: 10160		
ITEM DESCRIPTION	UNIT	QUANTITY	COST	TOTAL
Quantity Items				
Liquid Asphalt (8" depth)	TON	15	\$650	\$10,000
Concrete Sidewalk (6") (Bike Lane)	SF		\$10	\$0
Curb & Gutter	LF	156	\$40	\$6,000
Median Cover Material	SF	305	\$6	\$2,000
Sign	EA		\$720	\$0
Signals	EA		\$200,000	\$0
Bridge Widening	SF		\$250	\$0
TOTAL COST OF QUANTITY ITEMS:			(A)	\$18,000
Percentage Items				
Removals		3.0%	of A	\$1,000
Earthwork		4.0%	of A	\$1,000
Clearing and Grubbing		5.0%	of A	\$1,000
Striping		3.5%	of A	\$1,000
Construction Signing and Traffic Control		10.0%	of A	\$2,000
Surveying		5.0%	of A	\$1,000
Mobilization		5.0%	of A	\$1,000
TOTAL COST OF CONSTRUCTION BID ITEMS:			(CBI)	\$26,000
Force Account Items				
Utility Relocations		5.0%	of CBI	\$1,000
Contingencies & Misc. Items		20.0%	of CBI	\$5,000
TOTAL COST OF CONSTRUCTION ITEMS:			(CI)	\$32,000
Construction Engineering		20.0%	of CI	\$6,000
Design Engineering		10.0%	of CBI	\$3,000
TOTAL IMPROVEMENT COST:				\$38,000

*Note: Right-of-Way and Landscaping are not included in the costs.

Includes asphalt mat, asphalt flush jack, asphalt for prime, asphalt for surface treatment, & asphalt cement. & SAWCUT

Use price for 4" concrete sidewalk
Sign Post & Sign (\$20(12lf) + 12SF(\$30))

DRAFT


 <p>FELSBERG HOLT & ULLEVIG</p> <p><i>engineering paths to transportation solutions</i></p>		<p>OPINION OF PROBABLE COST</p> <p>In providing opinions of probable construction cost, the Client understands that Felsberg Holt & Ullevig has no control over costs or the price of labor, equipment or materials, or over the Contractor's method of pricing, and that the opinions of probable construction costs provided herein are to be made on the basis of our qualifications and experience. FHU makes no warranty, expressed or implied, as to the accuracy of such opinions as compared to bid or actual costs.</p>		
RAPID CITY		Prepared By: JMW		
		Date: 11-Oct-11		
Northbound US Hwy 16 (Neck Yoke Rd. to Busted 5 Ct.)		FHU Reference Nos.: 10160		
ITEM DESCRIPTION	UNIT	QUANTITY	COST	TOTAL
Quantity Items				
Liquid Asphalt (8" depth)	TON	888	\$650	\$577,000
Concrete Sidewalk (6") (Bike Lane)	SF		\$10	\$0
Curb & Gutter	LF		\$40	\$0
Median Cover Material	SF		\$6	\$0
Sign	EA	2	\$720	\$1,000
Signals	EA		\$200,000	\$0
Wildlife Fence	LF	8,700	\$12	\$104,000
Bridge Widening	SF		\$250	\$0
TOTAL COST OF QUANTITY ITEMS:			(A)	\$682,000
Percentage Items				
Removals		3.0%	of A	\$20,000
Earthwork		4.0%	of A	\$27,000
Clearing and Grubbing		5.0%	of A	\$34,000
Striping		3.5%	of A	\$24,000
Construction Signing and Traffic Control		10.0%	of A	\$68,000
Surveying		5.0%	of A	\$34,000
Mobilization		5.0%	of A	\$34,000
TOTAL COST OF CONSTRUCTION BID ITEMS:			(CBI)	\$923,000
Force Account Items				
Utility Relocations		5.0%	of CBI	\$46,000
Contingencies & Misc. Items		20.0%	of CBI	\$185,000
TOTAL COST OF CONSTRUCTION ITEMS:			(CI)	\$1,154,000
Construction Engineering		20.0%	of CI	\$231,000
Design Engineering		10.0%	of CBI	\$92,000
TOTAL IMPROVEMENT COST:				\$1,385,000

*Note: Right-of-Way and Landscaping are not included in the costs.

Includes asphalt mat, asphalt flush jack, asphalt for prime, asphalt for surface treatment, & asphalt cement. & SAWCUT

Use price for 4" concrete sidewalk
Sign Post & Sign (\$20(12lf) + 12SF(\$30))

DRAFT


 FELSBURG HOLT & ULLEVIG <i>engineering paths to transportation solutions</i>		OPINION OF PROBABLE COST In providing opinions of probable construction cost, the Client understands that Felsburg Holt & Ullevig has no control over costs or the price of labor, equipment or materials, or over the Contractor's method of pricing, and that the opinions of probable construction costs provided herein are to be made on the basis of our qualifications and experience. FHU makes no warranty, expressed or implied, as to the accuracy of such opinions as compared to bid or actual costs.		
RAPID CITY LaCrosse St. (E. North St. to Anamosa St.)		Prepared By: JMW Date: 3-Nov-11 FHU Reference Nos.: 10160		
ITEM DESCRIPTION	UNIT	QUANTITY	COST	TOTAL
Quantity Items				
Liquid Asphalt (8" depth)	TON	154	\$650	\$100,000
Concrete Sidewalk (6") (Bike Lane)	SF		\$10	\$0
Curb & Gutter	LF	340	\$40	\$14,000
Median Cover Material	SF	246	\$6	\$1,000
Sign	EA		\$720	\$0
RR Cross Arm Gates	EA	1	\$300,000	\$300,000
Signals	EA	1	\$200,000	\$200,000
Bridge Widening	SF		\$250	\$0
TOTAL COST OF QUANTITY ITEMS:			(A)	\$615,000
Percentage Items				
Removals		3.0%	of A	\$18,000
Earthwork		4.0%	of A	\$25,000
Clearing and Grubbing		5.0%	of A	\$31,000
Striping		3.5%	of A	\$22,000
Construction Signing and Traffic Control		10.0%	of A	\$62,000
Surveying		5.0%	of A	\$31,000
Mobilization		5.0%	of A	\$31,000
TOTAL COST OF CONSTRUCTION BID ITEMS:			(CBI)	\$835,000
Force Account Items				
Utility Relocations		5.0%	of CBI	\$42,000
Contingencies & Misc. Items		20.0%	of CBI	\$167,000
TOTAL COST OF CONSTRUCTION ITEMS:			(CI)	\$1,044,000
Construction Engineering		20.0%	of CI	\$209,000
Design Engineering		10.0%	of CBI	\$84,000
TOTAL IMPROVEMENT COST:				\$1,253,000

*Note: Right-of-Way and Landscaping are not included in the costs.

Includes asphalt mat, asphalt flush jack, asphalt for prime, asphalt for surface treatment, & asphalt cement. & SAWCUT

Use price for 4" concrete sidewalk
 Sign Post & Sign (\$20(12lf) + 12SF(\$30))

DRAFT

 <p>FELSBURG HOLT & ULLEVIG</p> <p><i>engineering paths to transportation solutions</i></p>	<p align="center">OPINION OF PROBABLE COST</p> <p>In providing opinions of probable construction cost, the Client understands that Felsburg Holt & Ullevig has no control over costs or the price of labor, equipment or materials, or over the Contractor's method of pricing, and that the opinions of probable construction costs provided herein are to be made on the basis of our qualifications and experience. FHU makes no warranty, expressed or implied, as to the accuracy of such opinions as compared to bid or actual costs.</p>			
<p>RAPID CITY</p>	<p align="right">Prepared By: JMW</p>			
<p>W. Omaha St. (Mountain View Rd. to West Blvd.)</p>	<p align="right">Date: 11-Oct-11</p>			
	<p align="right">FHU Reference Nos.: 10160</p>			
ITEM DESCRIPTION	UNIT	QUANTITY	COST	TOTAL
Quantity Items				
Liquid Asphalt (8" depth)	TON	0	\$650	\$0
Concrete Sidewalk (6") (Bike Lane)	SF		\$10	\$0
Curb & Gutter	LF		\$40	\$0
Median Cover Material	SF		\$6	\$0
Sign	EA		\$720	\$0
Signals	EA	1	\$200,000	\$200,000
Bridge Widening	SF		\$250	\$0
TOTAL COST OF QUANTITY ITEMS:		(A)		\$200,000
Percentage Items				
Removals		1.5%	of A	\$3,000
Earthwork		0.0%	of A	\$0
Clearing and Grubbing		2.0%	of A	\$4,000
Striping		0.0%	of A	\$0
Construction Signing and Traffic Control		10.0%	of A	\$20,000
Surveying		5.0%	of A	\$10,000
Mobilization		5.0%	of A	\$10,000
TOTAL COST OF CONSTRUCTION BID ITEMS:		(CBI)		\$247,000
Force Account Items				
Utility Relocations		5.0%	of CBI	\$12,000
Contengencies & Misc. Items		20.0%	of CBI	\$49,000
TOTAL COST OF CONSTRUCTION ITEMS:		(CI)		\$308,000
Construction Engineering		20.0%	of CI	\$62,000
Design Engineering		10.0%	of CBI	\$25,000
TOTAL IMPROVEMENT COST:				\$370,000

*Note: Right-of-Way and Landscaping are not included in the costs.

Includes asphalt mat, asphalt flush jack, asphalt for prime, asphalt for surface treatment, & asphalt cement. & SAWCUT

Use price for 4" concrete sidewalk
Sign Post & Sign (\$20(12lf) + 12SF(\$30))