

BIKE PATH LIGHTING PROPOSAL



Lights....



Cameras...



Action...

PROJECT GOALS



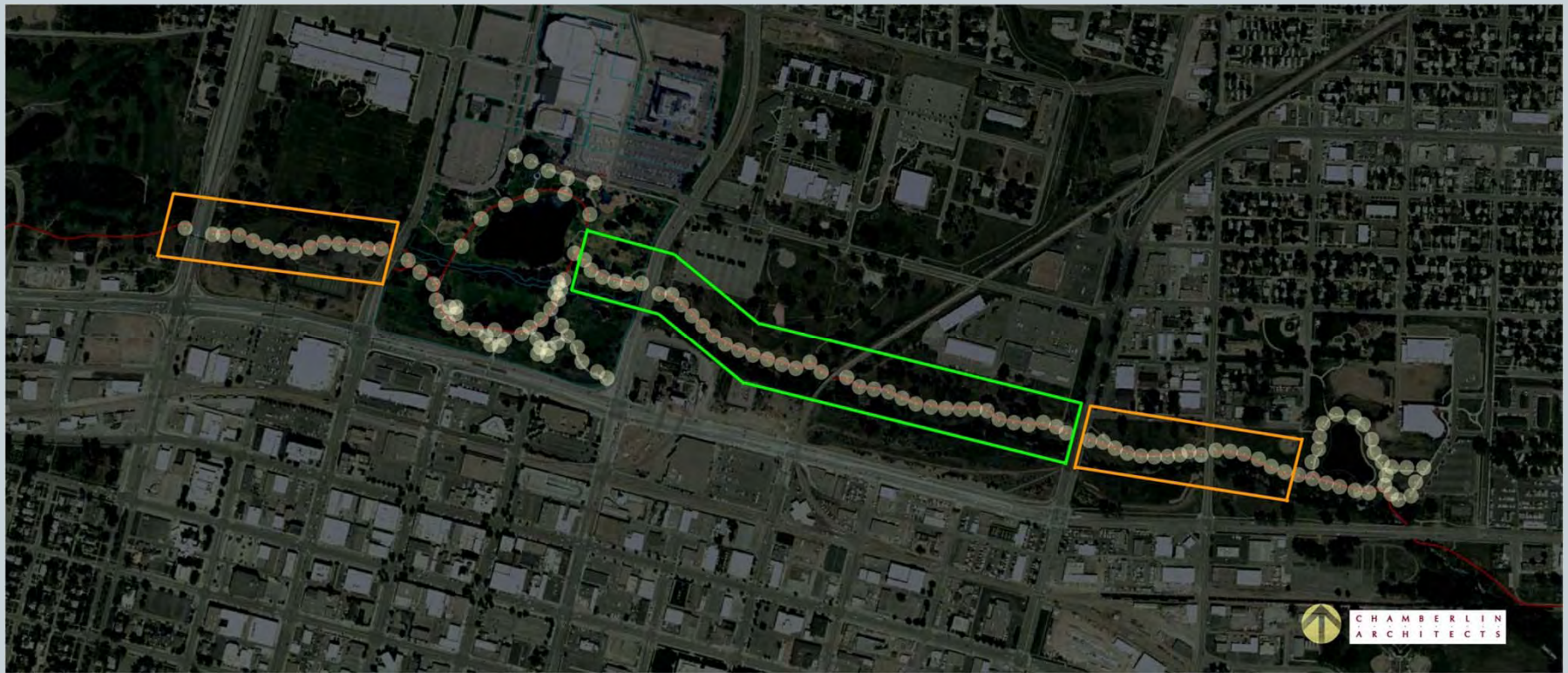
- IMPROVE SAFETY ALONG BIKE PATH
- IMPROVE VISIBILITY ALONG BIKE PATH
- IMPROVE QUALITY OF LIFE IN RAPID CITY
- INCREASE USE OF BIKE PATH
- MODEL GREEN SUSTAINABLE ENERGY USE

PROJECT DESCRIPTION



- **EXTEND AND INCREASE LIGHTING ALONG RAPID CITY BIKE PATH FROM ROOSEVELT PARK TO I-190**
- **INSTALL COMMUNITY WEB CAMERAS AT BRIDGES AND OTHER REDUCED VISIBILITY AREAS**
- **ENGAGE COMMUNITY IN FUND RAISING FOR PROJECT**

Roosevelt Park to I-190 Bridge



THE STORY OF OPERATION SAFE PATH



•**2003**- OPERATION SAFE PATH IS STARTED BY RCPD. ITS GOALS ARE TO REDUCE CRIME BY ELIMINATING EXCESS BRUSH AND TREES USED BY THE HOMELESS AND TRANSIENTS AS LIVING SPACE.

•**2004**- RCPD AND THE PARKS DEPT. USE THEIR RESOURCES TO CONTINUE CLEANING UP THE BIKE PATH AREA OF BRUSH AND TREES.

THE STORY OF OPERATION SAFE PATH



- 2005**-THE SUBJECT OF BIKE PATH LIGHTING WAS DISCUSSED BY CITY LEADERS HOWEVER IT WAS CLEAR THE REHABILITATION OF THE AFFECTED AREA WOULD TAKE YEARS AND ALTHOUGH LIGHTING WAS ON THE LIST OF PRIORITIES, IT WOULD BE MORE EFFECTIVE AFTER THE POPULATION OF HOMELESS WAS DISBURSED.
- 2006**- DECONSTRUCTION OF THE ROCK WALL ON EAST BLVD. AND CONTINUATION OF BRUSH CLEARING.
- 2007**-OPERATION SAFE PATH WAS COMING CLOSER TO COMPLETION (REGARDING THE BRUSH AND TREES) RCPD STARTED MOVING AWAY FROM THE CORE AREA OF THE CREEK/BIKE PATH.

THE STORY OF OPERATION SAFE PATH



•**2008**- RCPD DETERMINED THE MAJOR GOALS OF OPERATION SAFE PATH HAD BEEN COMPLETED. THE PROJECT WAS THEN TURNED OVER TO KEN EDEL AND HIS GROUP OF VOLUNTEERS TO CONTINUE WITH CLEARING BRUSH AND TREES ALONG THE REST OF THE PATH.

•**2009**- DOWNTOWN SECTOR OFFICERS BEGIN TO EMPHASIZE FOCUS ON THE CRIMINAL ELEMENTS ON THE BIKE PATH AND THE PROBLEMS ASSOCIATED (I.E. PANHANDLING, CONSUMING IN PUBLIC, INTOXICATED SUBJECTS, ETC.)

THE SAFE PATH CONTINUES

- **STREET CRIMES UNIT**
 - CREATED IN 2010 TO ADDRESS ISSUES OF DOWNTOWN AREA INCLUDING THE BIKE PATH AND CREATE A SAFE ENVIRONMENT FOR OUR CITIZENS. THIS UNIT CONTINUES THE IDEAS OF OPERATION SAFE PATH AND CONTINUES TO CREATE LONG TERM SOLUTIONS TO IMPROVE THE AREA. THE UNIT HAS BEEN DEEMED VERY EFFECTIVE...



LIGHTS



POINTS OF LIGHT

➤ SAFER ACCESSIBILITY

- INCREASES USE OF PARKS
- PROVIDES “RIVERWALK” ATMOSPHERE
- EXTENDED HOURS OF ENJOYMENT
- CONNECTION TO DOWNTOWN
- CONNECTION TO JOURNEY MUSEUM

➤ EVENT PARKING

- CIVIC CENTER
- HILLS ALIVE
- 4TH OF JULY
- SUMMER CONCERTS
- STOCK SHOW
- THE RALLY
- PARADES

NIGHT LIGHTING ALONG A BIKE PATH



“The Guiding Light”... Along the Bike Path



➤ **INSTALL SOLAR LIGHTS ALONG BIKE PATH IN SUN LIT AREAS**

- Estimate 40 solar lights

➤ **INSTALL WIRED LIGHTING IN AREAS OF SHADE**

- East Blvd Bridge behind Prairie Market shopping plaza to Pressler Junction Bridge (3rd Street & Omaha)
- Estimate 15 electric lights
- Estimate 10 electric lights for bridges

Why Solar Lights?

- Enhance safety
- Improve appeal
- Protects investment
- Economical
- Reliable



Why Solar Lights?



- Environmentally responsible
- Maintains power during power outages
- Flood safe

AESTHETICALLY



PLEASING



CHAMBERLIN
ARCHITECTS



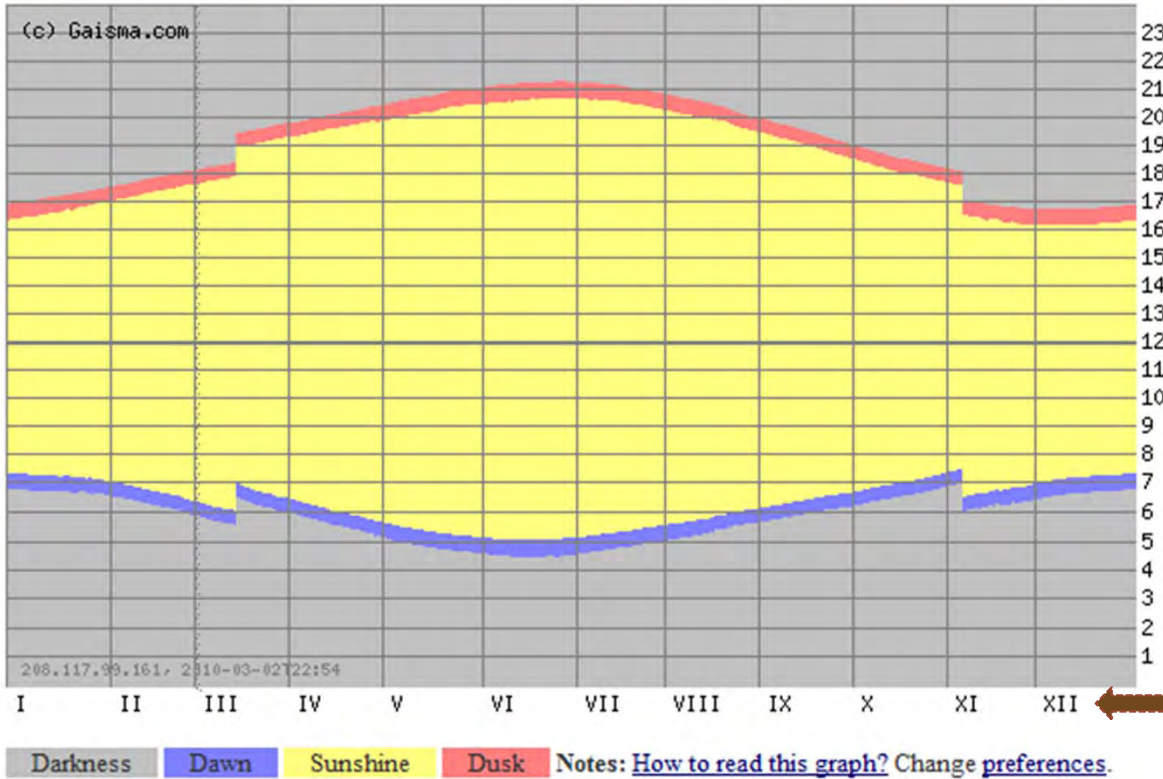
CHAMBERLIN
ARCHITECTS

SUN SHINE IN RAPID CITY



Transitioning to Dusk
at Commute Time

Rapid City, South Dakota, United States - Sunrise, sunset, dawn and dusk times, graph



6pm

7am

Months of Year

ESTIMATED COSTS FOR LIGHTING

- 40 SOLAR LIGHTS @ \$7,000 EACH = \$280,000
- 15 ELECTRIC LIGHTS @ \$5,000 PER LIGHT INSTALLED = \$75,000
- 10 BRIDGE LIGHTS @ \$1,000 PER LIGHT INSTALLED = \$10,000
- **TOTAL ESTIMATED LIGHTING COST FOR 65 LIGHTS = \$365,000**



CAMERAS



SMILE, YOU ARE ON CANDID CAMERA 😊



- ENHANCED PUBLIC SAFETY
 - 24 HR. ACCESSIBILITY FOR ENTIRE COMMUNITY VIA THE INTERNET
 - CRIME SOLVING TOOL FOR POLICE
 - CRIME DETERENT

- COMMUNITY RESOURCE
 - INTERACTIVE BASED SYSTEM
 - WEATHER CONDITIONS ON BIKE PATH
 - EVENT AND PEDESTRIAN TRAFFIC OBSERVATIONS
 - MANAGED BY CITY INFORMATION TECHNOLOGY DEPARTMENT
 - ACCESSIBLE THROUGH www.rcgov.org

Crime Solving Tool



- Duck Feeders.....



SMILE, YOU ARE ON CANDID CAMERA 😊



➤ WHERE DO WE NEED CAMERAS

- PLAYGROUND
- UNDER BRIDGES
- BANDSHELL
- ROOSEVELT POND
- MEMORIAL LAKE
- BEHIND PRAIRIE MARKET
- NEAR WAR MEMORIAL



WEB CAMS AND LIGHTING



- Light Fixtures to Light Up Bridge Area after Dark
- Cameras as for Security to Deter Unlawful Under-Bridge Activity
- Signage at Bridge Crossings to Acknowledge City Investment in Safe and Secure Environment



CHAMBERLIN
ARCHITECTS



CHAMBERLIN
ARCHITECTS

PROJECT BUDGET



LIGHTING

Estimated Costs



➤ SOLAR LIGHTING

➤ 40 LIGHTS @ \$7,000 EACH INSTALLED = \$280,000

➤ ELECTRICAL LIGHTING

➤ 15 LIGHTS @ \$5,000 EACH INSTALLED = \$75,000

➤ 10 BRIDGE LIGHTS @ \$1,000 EACH INSTALLED = \$10,000

➤ **TOTAL ESTIMATED FOR LIGHTING = \$365,000**

CAMERAS

ESTIMATED COSTS



➤ 8TB SERVER/SET-UP		\$ 12,000
➤ CAMERAS		
➤ 30 @ \$1,940 =	\$58,200	
➤ 30 licenses @ \$212 =	\$ 6,360	
➤ 30 POE inject. @ \$100	\$ 3,000	
➤ 30 Surge prot. @ \$150	\$ 4,500	
➤ HP Switch	\$ 4,000	
➤ Installation \$75x4x30	\$ 9,000	
➤ Cable, trenching, labor @ \$2,000 per camera installed	\$60,000 +/-	\$145,060
TOTAL ESTIMATED COST		\$157,060

ADDITIONAL ESTIMATED COSTS



- ENGINEERING REPORT \$36,000
- ARCHITECTURAL DRAWINGS \$10,000
- FLOOD ELEVATION CERTIFICATIONS \$20,000

TOTAL ESTIMATED COSTS = \$66,000

TOTAL ESTIMATED PROJECT COST



- LIGHTING \$365,000
- CAMERAS \$157,060
- OTHER COSTS \$ 66,000

TOTAL ESTIMATED PROJECT COST
= \$588,060

SAVINGS



- **No scheduled maintenance for five years**
- **Lamp life up to 60,000 hours**
- **No electric bills for solar lights**
 - (will be some increase in electric bill for wired lighting)
- **Public safety resources**

WHAT'S NEXT?



- Determine requirements for project approval
 - Gather information for Flood Determination
 - Flood elevations
 - Construction requirements
- Raise funding for Engineering study
- Gain public support
- Gain City Council support

Light up the bike path

WHAT IS THIS PROJECT GOING TO DO FOR RAPID CITY



- Exponentially increase function and public safety for the bike path
- Provide safe access for patrons of the Civic Center from 5th St./New York St. parking
- Increases opportunities for commuters

WHAT IS THIS PROJECT GOING TO DO FOR RAPID CITY



- Connect downtown to our parks
- Provide visitors opportunities to enjoy our park system
- Extends winter use of bike path into evening
- Safer and more accessible venue for park events

THE ROAD AHEAD...



- **FLOOD ZONE**
- **COMMUNITY SUPPORT**
- **COUNCIL SUPPORT**
- **FUND RAISING**

COMMUNITY SUPPORTERS



- Roosevelt Neighborhood Watch



QUESTIONS???



Contact Officer Ryan Phillips

Ryan.Phillips@rcgov.org