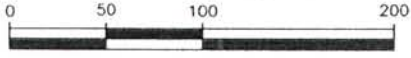


11RZ023

# METES AND BOUNDS LOT 4 OF BLOCK 3, STONE CREEK SOUTH SUBDIVISION

LOCATED IN THE SW1/4,  
SECTION 22, T1N, R7E, BHM  
RAPID CITY, PENNINGTON COUNTY, SOUTH DAKOTA

SEPTEMBER 12, 2011

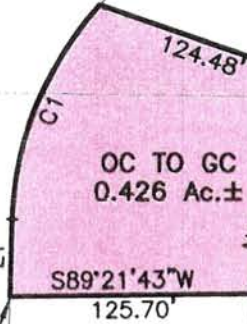


SCALE 1" = 100'

LOT 7

LOT 5

CATRON BLVD



OC TO GC  
0.426 Ac.±

S89°21'43"W  
125.70'

S70°48'41"E  
180.16'

N19°11'19"E  
116.69'

N25°51'53"E 193.96'

LOT 4

LDR TO GC  
3.404 Ac.±

S63°36'24"E  
290.02'

GAD TO GC  
0.505 Ac.±

N00°06'46"W 331.83'

S26°23'14"W  
296.95'

POINT OF BEGINNING

N62°34'47"W 600.53'

46.12'

POINT OF BEGINNING

POINT OF BEGINNING  
Management Department  
Rapid City Growth  
BENDS DRIVE  
SEP 15 2011

RECEIVED

LINE	BEARING	LENGTH
L1	N01°34'53"E	40.08'

CURVE	LENGTH	RADIUS	DELTA	CHORD BEARING	CHORD DISTANCE
C1	123.86	174.00	40°47'10"	N21°58'28"E	121.26

## RENNER & ASSOCIATES, LLC.

616 SIXTH ST. \* RAPID CITY, SD 57701  
PHONE: 605/721-7310 FAX: 605/721-7313  
SPEARFISH OFFICE: 605/717-0016



CITY HALL 1903