

Airport Water Main Project

Request Authorization to Seek Proposals for
Engineering Services for Airport Water main



History

- Airport is served by a single 12-inch water main
- Water flow rates have been steadily declining due to development along Hwy 44 and airport
 - 1500 GPM – Current
 - 3000 GPM – Required by IFC & NFPA
- Fire Marshall Identified Issue in 2003
 - Made numerous concessions to aid development
 - Implemented building restrictions
 - Buildings greater than 3600 sq/ft require fire sprinkler
 - New users must show no loss of flow rates



History Continued

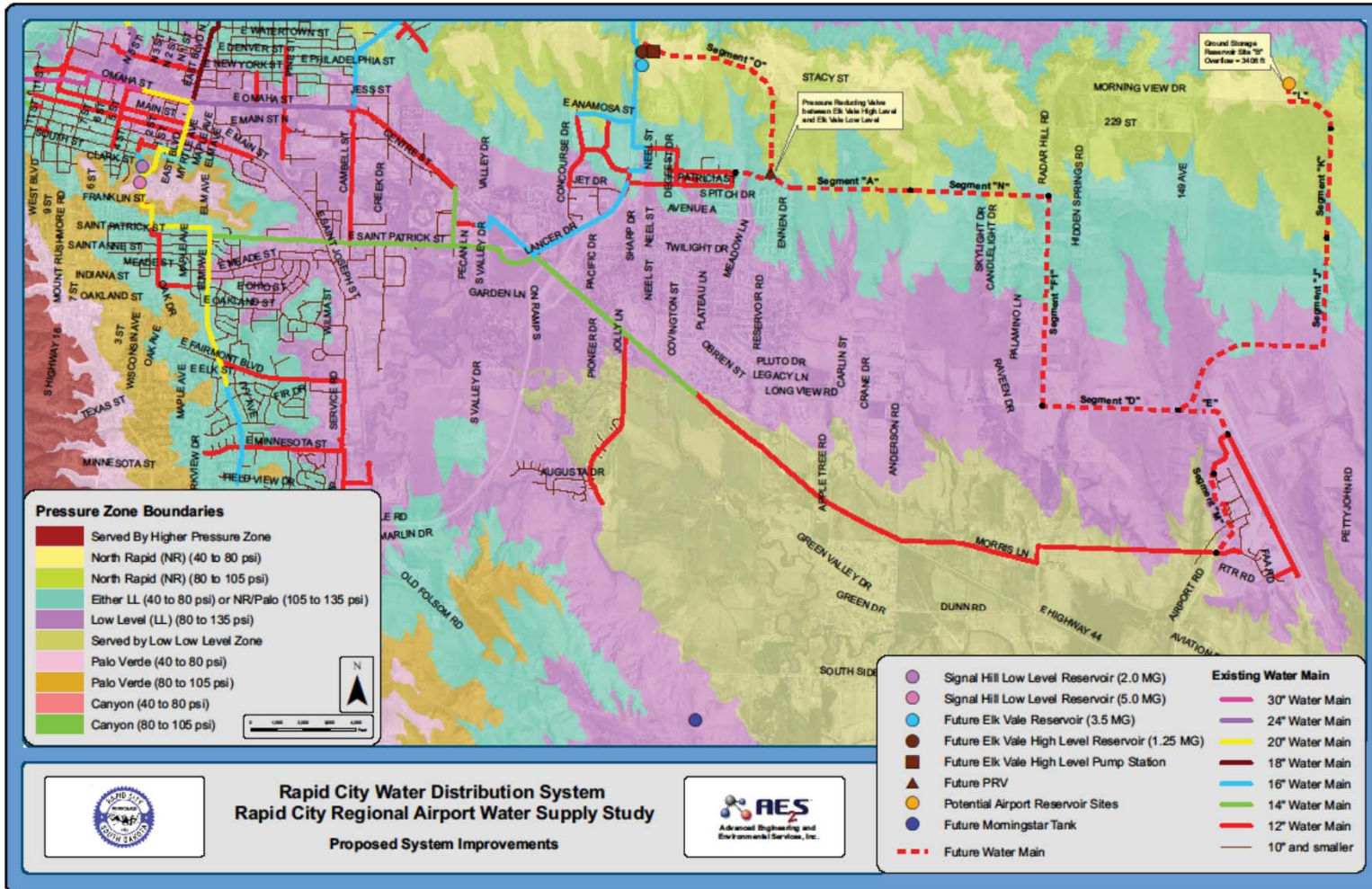
- Council asked airport to study the issue and provide recommendations
- KLJ, along with AE2S, conducted a study in 2009
- Study was delivered to Public Works
- Recommendations have been added to the Utilities Master Plan



Study Recommendations

- Most cost-effective solution :
 - Build a second 16-inch water main to the airport
 - Tie in to existing 12-inch main
- Provides
 - 3500 GPM
 - 3000 GPM for airport and existing users
 - 500 GPM for growth
 - Support for additional on/off field development
 - Redundancy
 - Loops the water line
 - Ensures no single-point failure

Proposed System Improvements





Cost, Schedule and Funding

- Cost & Schedule
 - \$5.5 – 6M
 - 3-6 Months design
 - 12 Months construction
- Funding Opportunities
 - \$4M; Water Revenue Bond – 2009 Series
 - \$2M; .16 funds



What we are asking for:

- Authorize Public Works to seek proposals for engineering services for the airport water main